

# Signal lamps with integrated neon glow lamp - 10 mm, square lens, 230 V, green lens

## 1.69.507.138/1502



### General information

Form of lens	square
Color of lens	transparent green

### Dimensions

Length of collar	12.5 mm
Width of collar	12.5 mm
Overall height	3 mm
Mounting depth	30 mm
Mounting hole	10 mm

### Mechanical design

Mounting	pressing into hole
Terminals	quick connector 2.8 x 0.8 mm
Lamp socket	no
Lamp	neon glow lamp

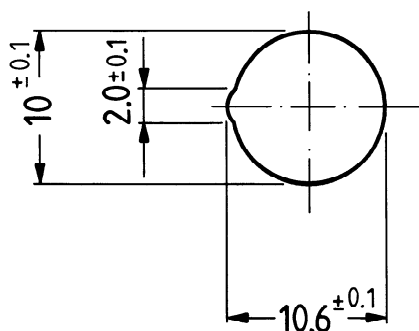
### Electrical characteristics

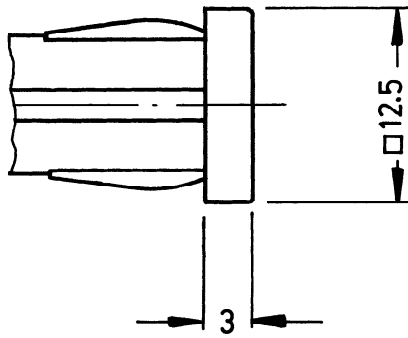
Voltage limit max.	230 V
--------------------	-------

### Other specifications

Degree of protection from front side	IP40 (DIN EN 60529)
Weight	2.5 g
ROHS compliant	yes
REACH compliant	yes

### Panel cut-out





# Mouser Electronics

Authorized Distributor

Click to View Pricing, Inventory, Delivery & Lifecycle Information:

[RAFI:](#)

[1.69.507.138/1502](#)