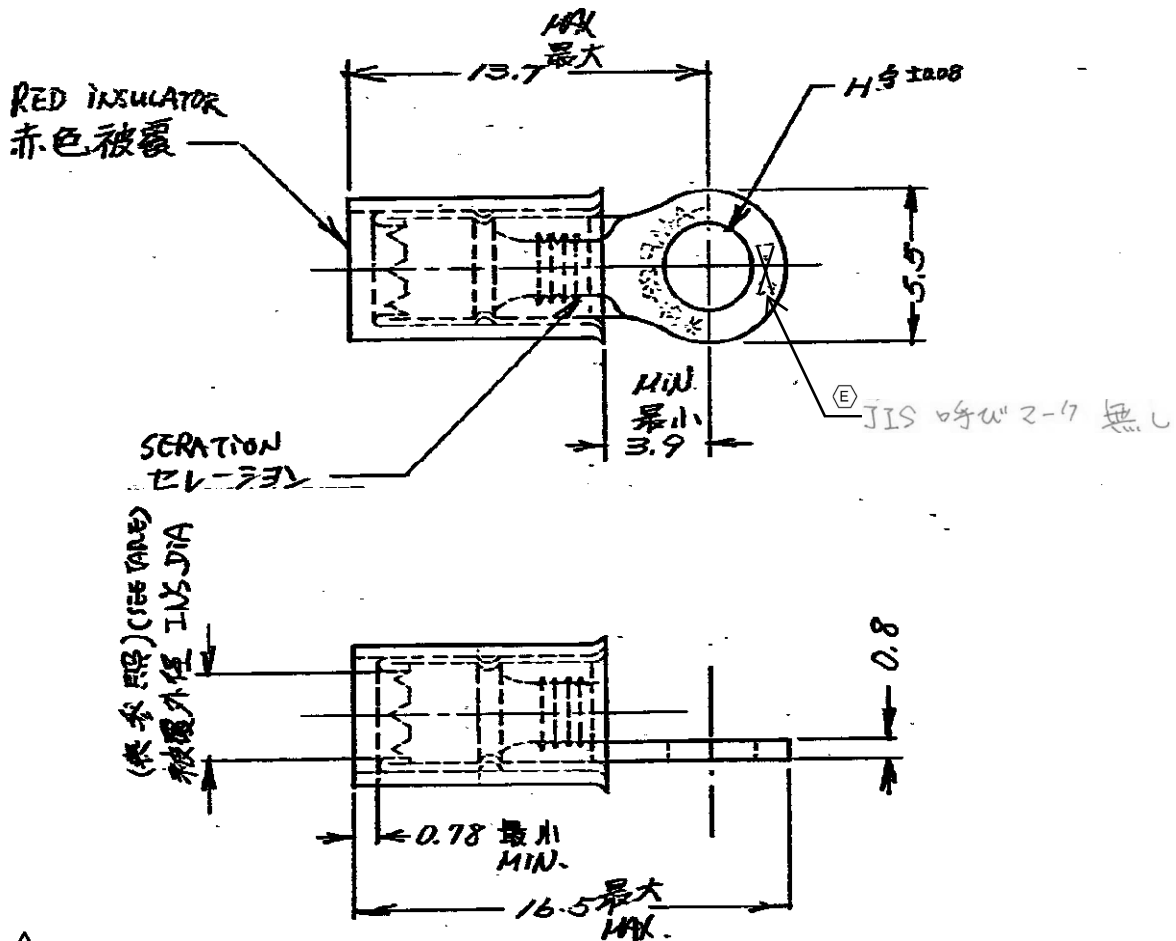


C-171505



1 OBSOLETE PARTS: OBSOLETE CIS STREAMLINING PER D.RENAUD/D.SINISI

(P/N)	(STUD)	(H DIM)	(INS. DIA)	
型番	寸法	H 寸法	被覆 外径	
171505-1	#4	3.02	2.03~3.18	
-2	#6	3.68	2.03~3.18	
-3	#4	3.02	2.67~3.56	
-4	#6	3.68	2.67~3.56	
(E) -5	#1	2.03	2.03~3.18	OBSOLETE
(E) -6	#1	3.25	2.03~3.18	OBSOLETE
171505-7	#2	2.36	2.03~3.18	OBSOLETE 1

E	Change Applicable Body	Y.O	N.Y	23JAN17
D2	REV PER ECO-10-000444	KK	AEG	08JAN 10
D1	OBSOLETE (REV-B) K.N	4.1		
D	REVISED (REV-B) K.Y	4.5		
C	REVISED (REV-B) S.O	4.1		
B	ADDED MARK H.S	4.1		
A	REVISED (REV-A) H.S	4.1		
LTR	変更 REVISION RECORD	DR	CHK	DATE

(CISBY AMP) ALL RIGHTS RESERVED AMP PRODUCTS COVERED BY PATENTS AND/OR PATENTS PENDING		参考図面 (CUSTOMER COPY) (REFERENCE ONLY)	
(MATERIAL) 電線銅		STE TE Connectivity	
(WIRE RANGE) 0.26~1.04 AWG22-18		(TYPE) プラシコリブ タイプ 277V	
(TOLERANCE) ±0.5 (EXCEPT AS NOTED) ±1.0		(SCALE) 4-1 J A C-171505	
(NAME) 丸型端子 RING TERMINAL			

Mouser Electronics

Authorized Distributor

Click to View Pricing, Inventory, Delivery & Lifecycle Information:

[TE Connectivity:](#)

[171505-3](#)