

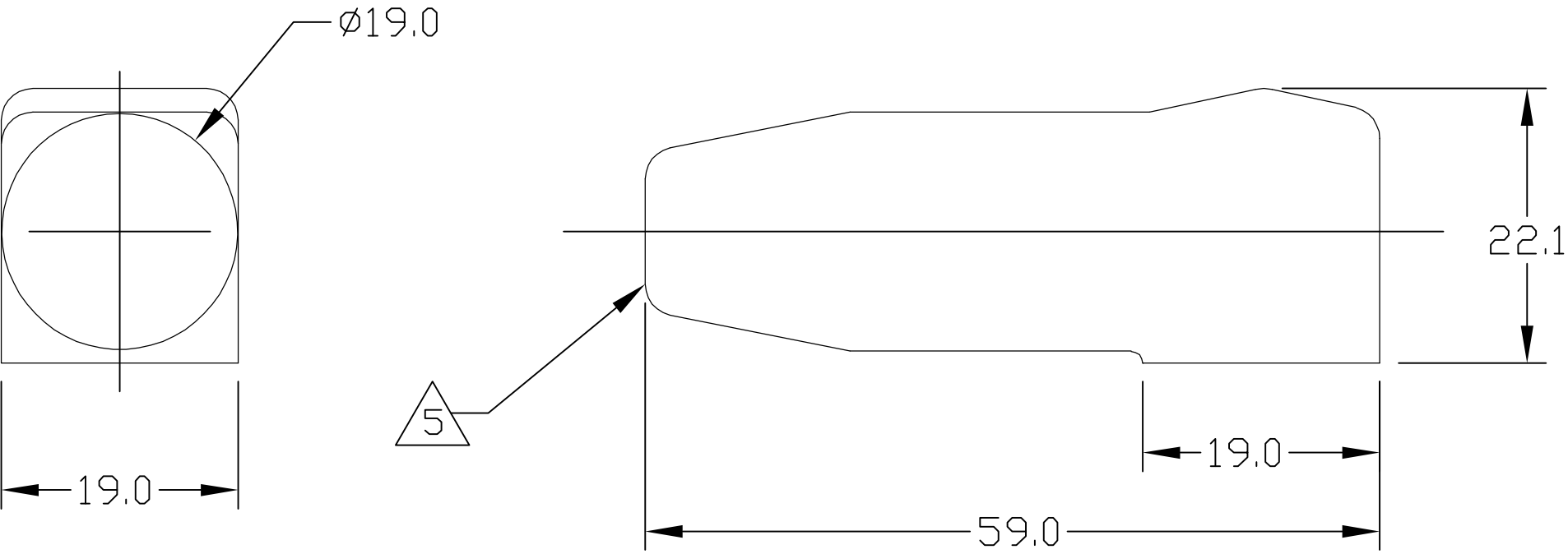
4

3

2

1

LOC	DIST	REVISIONS				
GP	00	P	LTR	DESCRIPTION	DATE	APVD
			B	REV PER ECO-06-006262	16MAR06	RG MP

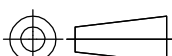


- 5 CABLE ENTRY OF BOOT IS MOULDED SOLID AND CROPPED TO SUIT CABLE USED BY CUSTOMER.
- 4. MATERIAL: ALL COLORS TO BE FIRE RETARDANT GRADE PVC 55 SHORE A, RATED TO UL94V-0. COLORS: SEE TABLE
 - 3. FINISH: GLOSSY, CLEAN WITH NO INTERNAL & EXTERNAL BURRS.
 - 2. ITEMS PROVIDED TO THIS SPECIFICATION SHALL BE IDENTIFIED ON THE CONTAINER WITH THE FOLLOWING INFORMATION: PART NUMBER & DATE CODE OF MANUFACTURE.
 - 1. PART NUMBER CHANGES AND OR DESIGN CHANGES AFFECTING ITEM INTERCHANGEABILITY REQUIRE PRIOR TYCO APPROVAL AND AUTHORIZATION BY REVISION TO THIS DRAWING.

1766600-4	BLUE
1766600-3	GREY
1766600-2	RED
1766600-1	BLACK
TYCO PN:	COLOR

ELCON

RAPID LOCK

THIS DRAWING IS A CONTROLLED DOCUMENT.		DWN M.C.CANT/GRZYBOWSKI		16FEB05		tyco Electronics		Tyco Electronics Corporation					
DIMENSIONS: mm		TOLERANCES UNLESS OTHERWISE SPECIFIED:		CHK —		Harrisburg, PA 17105-3608							
		0 PLC ± —		APVD D.CHAU		25FEB05		NAME					
		1 PLC ± .5		PRODUCT SPEC		INSULATION BOOT SIZE #2 —							
		2 PLC ± .25		—									
		3 PLC ± —		APPLICATION SPEC									
4 PLC ± —		—		SIZE		CAGE CODE		DRAWING NO		RESTRICTED TO			
MATERIAL —		FINISH —		WEIGHT —		A3		00779		C=1766600		—	

Mouser Electronics

Authorized Distributor

Click to View Pricing, Inventory, Delivery & Lifecycle Information:

[TE Connectivity:](#)

[1766600-1](#)