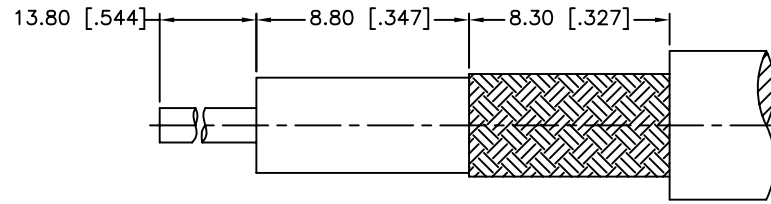
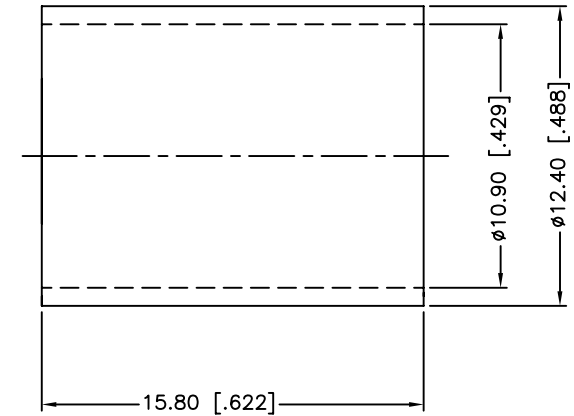
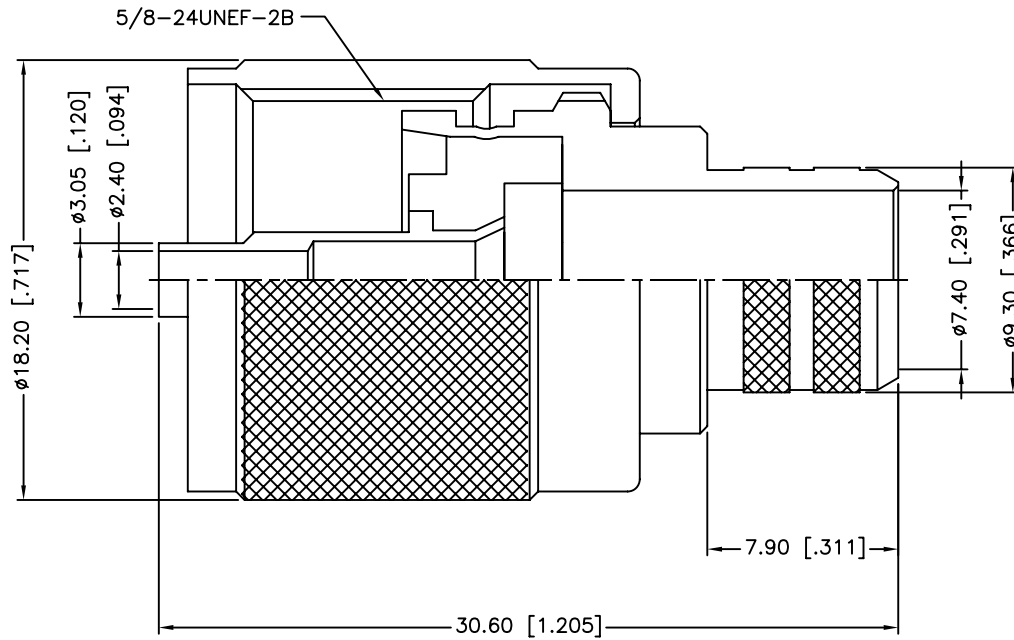


REV.	DATE	ECR NO.	DESCRIPTION
A	01/30/04	XXXXX	UPDATE DRAWING FORMAT
B	05/12/07	XXXXX	ADD CABLE DESCRIPTION
C	10/17/11	2241	CHANGE ALL COMPONENTS' FINISH



RECOMMENDED  
CABLE STRIPPING DIM'S



5	FERRULE	BRASS	NICKEL	1
4	CONTACT PIN	BRASS	SILVER	1
3	INSULATOR	PHENOLIC	NATURAL	1
2	BODY	BRASS	NICKEL	1
1	SHELL	BRASS	NICKEL	1
	DESCRIPTION	MATERIAL	FINISH	QTY

UNLESS OTHERWISE SPECIFIED DIMENSIONS ARE IN MILLIMETERS. DIMENSIONS IN [ ] ARE IN INCHES AND FOR CUSTOMER REFERENCE ONLY.

UNLESS OTHERWISE SPECIFIED TOLERANCES FOR MILLIMETERS ARE:  
 0.5 - 8mm ± 0.20mm  
 8 - 30mm ± 0.40mm  
 30 - 120mm ± 0.50mm

UNLESS OTHERWISE SPECIFIED TOLERANCES FOR INCHES ARE:  
 .020 - .315 = ± 0.007"  
 .315 - 1.180 = ± 0.015"  
 1.180 - 4.724 = ± 0.020"

DO NOT SCALE DRAWING

APPROVALS		DATE
DRAWN	M.ZHANG	10/17/11
CHECKED		
ISSUED		
SHEET	1 OF 1	
CAD FILE	C:/CONNEX/182102.DWG	

# Amphenol Connex

PART DESCRIPTION			
UHF CRIMP PLUG (FOR RG-8/U, 213/U CABLE)			
PART NO. 182102			
DWG. NO.	182102.DWG	REV. C	SCALE NA

# Mouser Electronics

Authorized Distributor

Click to View Pricing, Inventory, Delivery & Lifecycle Information:

[Amphenol:](#)

[182102](#)