

INTERCONNECTS

SERIES 316 • .100" GRID ELEVATED • SINGLE ROW STRIPS

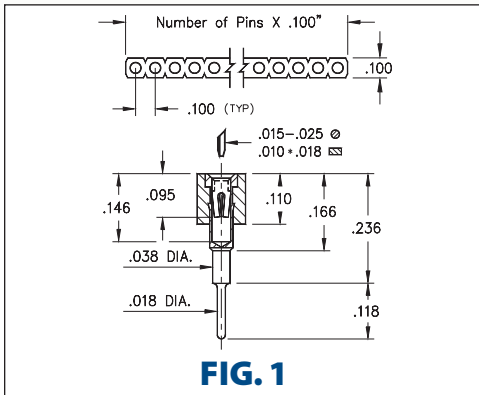


FIG. 1

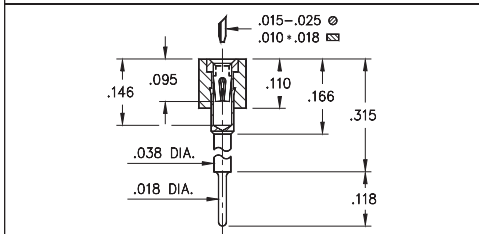


FIG. 2

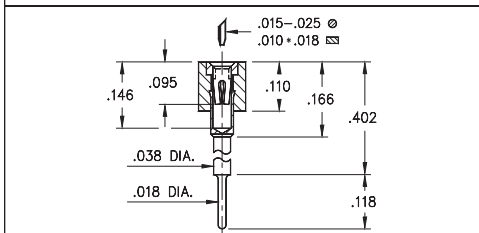


FIG. 3

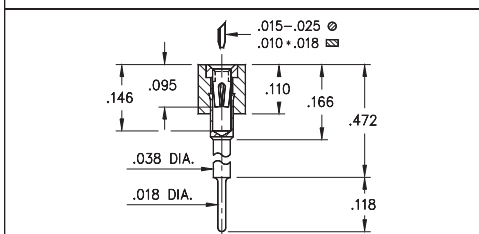


FIG. 4

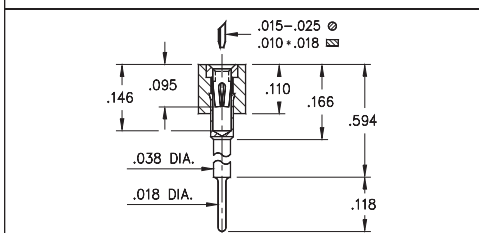


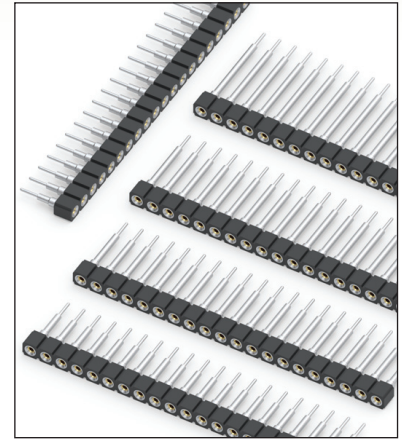
FIG. 5

- Elevated socket strips are available in 5 different heights:

316...006 uses pin # 0153-1
 316...003 uses pin # 0153-2
 316...007 uses pin # 0153-3
 316...008 uses pin # 0153-4
 316...001 uses pin # 0153-5
 See page 167 for details

- Hi-Rel, 4-finger BeCu #30 contact is rated at 3 amps. See page 253 for details

- Insulators are high temperature thermoplastic, suitable for all soldering operations





ORDERING INFORMATION

FIG. 1	Series 316...006	Standoff Height = .236
		316-XX-1
FIG. 2	Series 316...003	Standoff Height = .315
		316-XX-1
FIG. 3	Series 316...007	Standoff Height = .402
		316-XX-1
FIG. 4	Series 316...008	Standoff Height = .472
		316-XX-1
FIG. 5	Series 316...001	Standoff Height = .594
		316-XX-1



XX=Plating Code
See Below

For
Electrical, Mechanical
& Environmental Data,
See page 264

SPECIFY PLATING CODE XX=	91	93	41	43	47
Sleeve (Pin) 	200 μ"Sn/Pb	200 μ"Sn/Pb	200 μ"Sn	200 μ"Sn	200 μ"Sn
Contact (Clip) 	10 μ" Au	30 μ" Au	10 μ" Au	30 μ" Au	Au Flash

