

# RM Cores (6278110121)

Part Number: 6278110121

78 RM CORE SET

RM (Rectangular Modulus) cores allow better shielding than E type geometries while also providing easier winding accessibility and better power dissipation than a pot core configuration. Fair-Rite's standard RM cores all have a solid center post and standard height, low profile and alternate materials are available upon request.

□ RM cores can be supplied with the center post gapped to a mechanical dimension or an  $A_L$  value.

[Catalog Drawing](#)

[3D Model](#)

Weight indicated is per pair or set.

Weight: 1.7 (g)

Dim	mm	mm tol	nominal inch	inch misc.
A	10.75	± 0.25	0.423	—
B	5.25	± 0.10	0.207	—
C	4.5	± 0.10	0.177	—
D	3.65	± 0.15	0.144	—
E	8.15	± 0.20	0.321	—
F	3.8	± 0.10	0.15	—
G	5.8	min	0.228	min
J	9.6	± 0.20	0.378	—

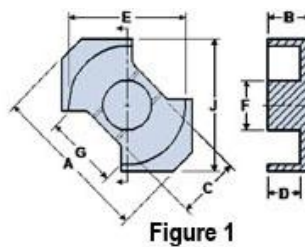



Figure 1

### Chart Legend

$\Sigma l / A$  : Core Constant,  $l_e$  : Effective Path Length,  $A_e$  : Effective Cross- Sectional Area,  $V_e$  : Effective Core Volume

$A_L$  : Inductance Factor 

Explanation of Part Numbers: Digits 1 & 2 = product class and 3 & 4 = material grade.

Electrical Properties	
$A_L$ (nH)	900 ±25%
$A_e$ (cm <sup>2</sup> )	0.134
$\Sigma l / A$ (cm <sup>-1</sup> )	17.6
$l_e$ (cm)	2.38
$V_e$ (cm <sup>3</sup> )	0.319
$A_{min}$ (cm <sup>2</sup> )	0.113

$A_L$  value is measured at 1 kHz, B < 10 gauss.