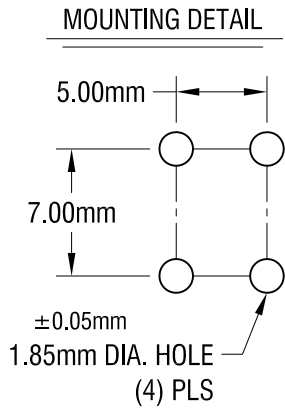
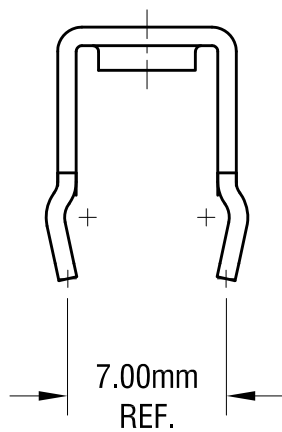
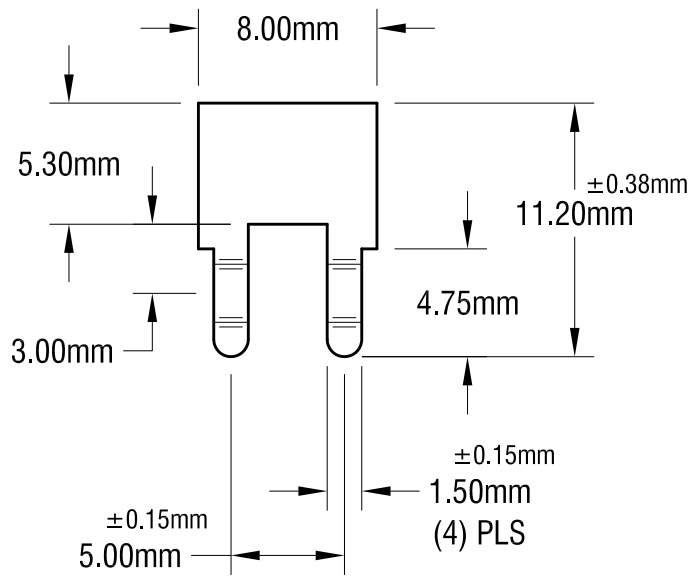
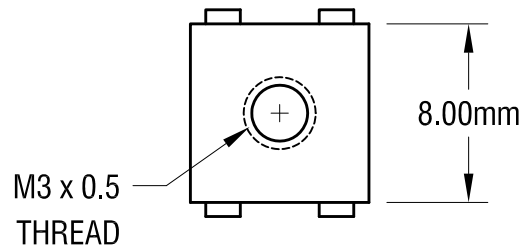
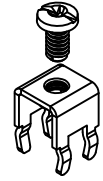


THIS DOCUMENT IS THE PROPERTY OF KEYSTONE ELECTRONICS CORP. AND SHALL NOT BE REPRODUCED, DISTRIBUTED OR USED AS A BASIS FOR MANUFACTURE WITHOUT PRIOR WRITTEN PERMISSION FROM KEYSTONE ELECTRONICS CORP.

ACTUAL SIZE



NOTE:

1. TERMINAL:
MAT'L - 0.8mm TH'K BRASS, MATTE TIN PLATE
2. SCREW:
M3 x 0.5 6.00 mm L., SUPPLIED LOOSE.
MAT'L - BRASS, NICKEL PLATE
3. ALL DIMENSIONS ARE IN MILLIMETERS.

EXTENDED PC SCREW TERMINAL WITH COLORED SCREW HEAD

PART NO.	HEAD COLOR	PART NO.	HEAD COLOR
7698-2	RED	7698-5	BLUE
7698-3	BLACK	7698-6	GREEN
7698-4	WHITE	7698-7	YELLOW

KEYSTONE ELECTRONICS CORP.
 www.keyelco.com • NEW HYDE PARK, NY 11040 • Tel (516) 328-7500

PART NAME: PC METRIC SCREW TERMINAL

MATERIAL: AS NOTED

FINISH: AS NOTED	DRN BY: NT	DATE: 2.05.13
	APP'D: LN	SCALE: 3X

TOLERANCES: INCH [MM] CODE: DWG NO.

DECIMAL: ± [± 0.25] C

ANGULAR: ± 1° UNLESS OTHERWISE SPECIFIED

7698-2 - 7698-7

DATE	DESCRIPTION	REV.

Mouser Electronics

Authorized Distributor

Click to View Pricing, Inventory, Delivery & Lifecycle Information:

[Keystone Electronics:](#)

[7698-6](#)