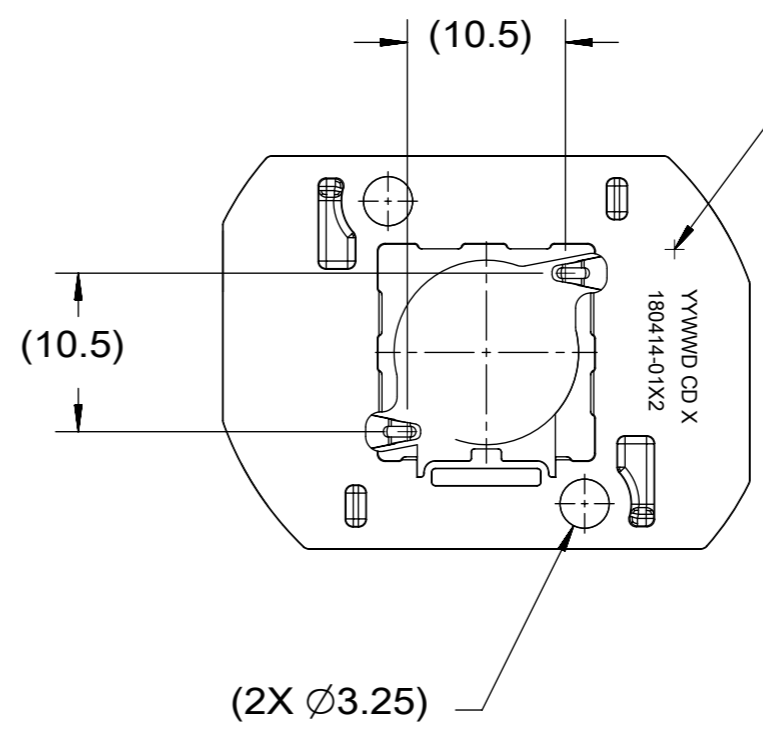
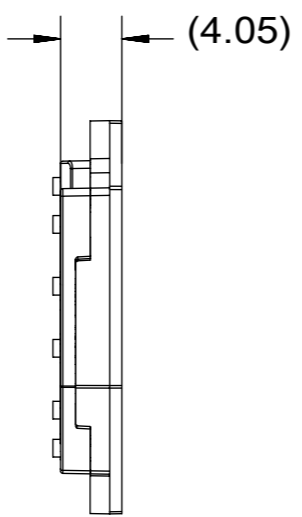
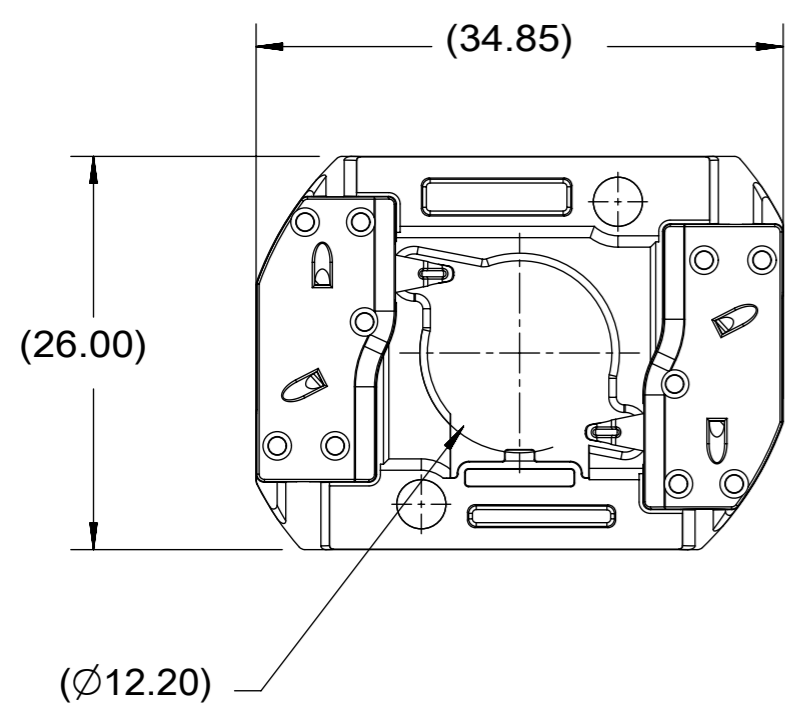
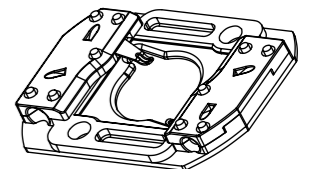


PART NUMBER	DESCRIPTION	MATERIAL	AGENCY APPROVAL
180414-0102	COB LED HOLDER 13.5MM X 13.5MM	POLYAMIDE (PA66) GLASS FILLED, COLOR: NATURAL	UL496 FILE E345583
180414-0112	COB LED HOLDER 13.5MM X 13.5MM	POLYESTER (PBT) GLASS FILLED, COLOR: WHITE	UL496 FILE E345583
180414-0202	COB LED HOLDER 13.5MM X 13.5MM WITH TAB CAP	POLYAMIDE (PA66) GLASS FILLED, COLOR: NATURAL	UL496 FILE E345583
180414-0212	COB LED HOLDER 13.5MM X 13.5MM WITH TAB CAP	POLYESTER (PBT) GLASS FILLED, COLOR: WHITE	UL496 FILE E345583

HOLDER ASSEMBLY
180414-0102, 180414-0112



PART MARKED WITH
DATE CODE (YYWWD)
MFG PLANT (CD)
REVISION (X)
PART NUMBER (180414-01X2)

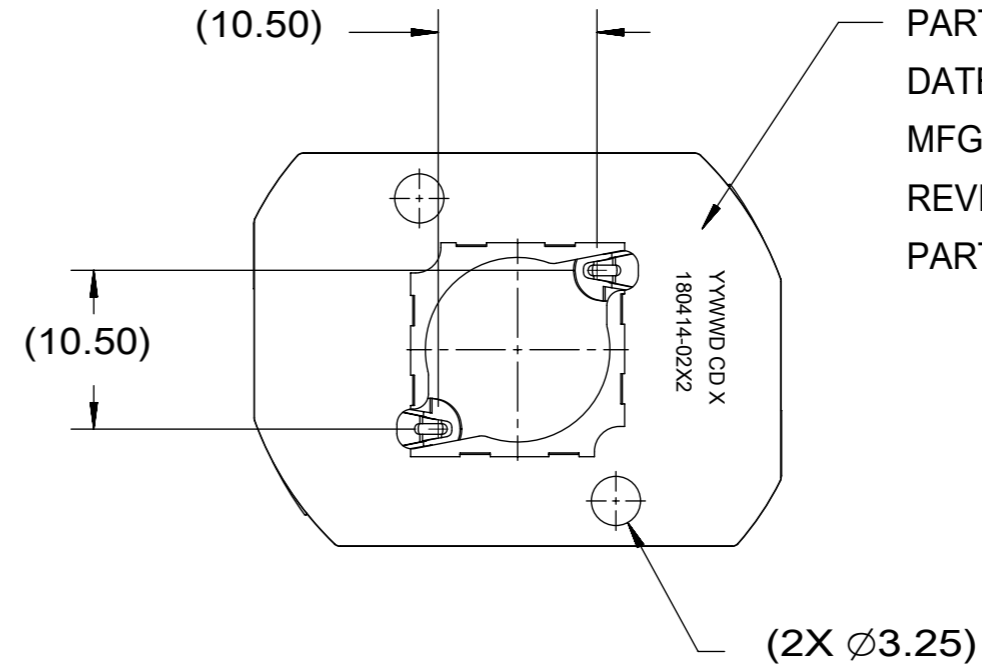
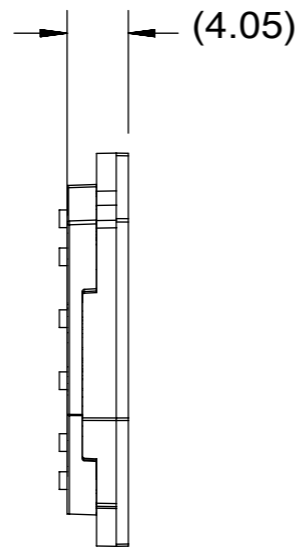
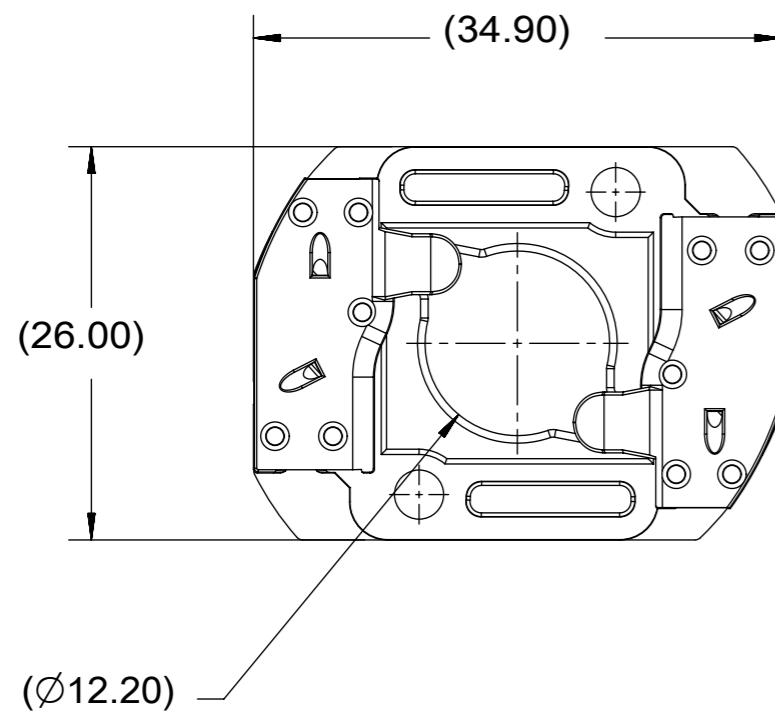


ISO VIEW 1
SCALE 1:1

- NOTES:
1. MATERIALS: HOUSING AND CAPS: SEE CHART, TERMINAL: COPPER ALLOY
 2. FINISHES: TERMINAL: NICKEL (Ni) UNDERPLATE 1.27 µm, WIRE TRAP SELECT TIN (Sn) 2.54µm, LED CONTACT SELECT GOLD (Au) 0.76µm
 3. PRODUCT SPECIFICATION: PS-180414-001
 4. PACKAGING SPECIFICATION: PK-180419-005
 5. SEE CHART FOR AGENCY APPROVAL INFORMATION
 6. ELV AND ROHS COMPLIANT.
 7. SEE SHEET 3 FOR APPLICATION NOTES.

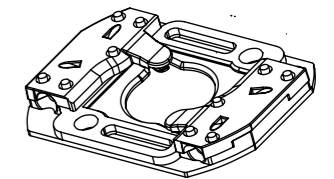
THIS DRAWING CONTAINS INFORMATION THAT IS PROPRIETARY TO MOLEX ELECTRONIC TECHNOLOGIES, LLC AND SHOULD NOT BE USED WITHOUT WRITTEN PERMISSION		CURRENT REV DESC:		molex	
DIMENSION UNITS	SCALE	EC NO: 603651			
mm	1:1	DRWN: SCHEN76 2018/08/22		COB LED HOLDER ASSEMBLY 13.5MM X 13.5MM SQUARE	
GENERAL TOLERANCES (UNLESS SPECIFIED)		CHK'D: BPISZCZOR 2018/08/30		PRODUCT CUSTOMER DRAWING	
ANGULAR TOL	± 0.5°	APPR: BPISZCZOR 2018/08/30		DOCUMENT NUMBER	
4 PLACES	±	INITIAL REVISION:		SD-180414-102	
3 PLACES	±	DRWN: MCOLE 2012/05/24		DOC TYPE	
2 PLACES	± 0.13	APPR: DMCGOWAN 2012/08/06		PSD	
1 PLACE	± 0.25	THIRD ANGLE PROJECTION		DOC PART	
0 PLACES	±	DRAWING		001	
DRAFT WHERE APPLICABLE MUST REMAIN WITHIN DIMENSIONS		SERIES		REVISION	
		A3-SIZE		C3	
		MATERIAL NUMBER		CUSTOMER	
		180414		GENERAL MARKET	
				SHEET NUMBER	
				1 OF 3	

HOLDER ASSEMBLY WITH TAB CAP
180414-0202, 180414-0212



PART MARKED WITH
DATE CODE (YYWW)
MFG PLANT (CD)
REVISION (X)
PART NUMBER (180414-02X2)

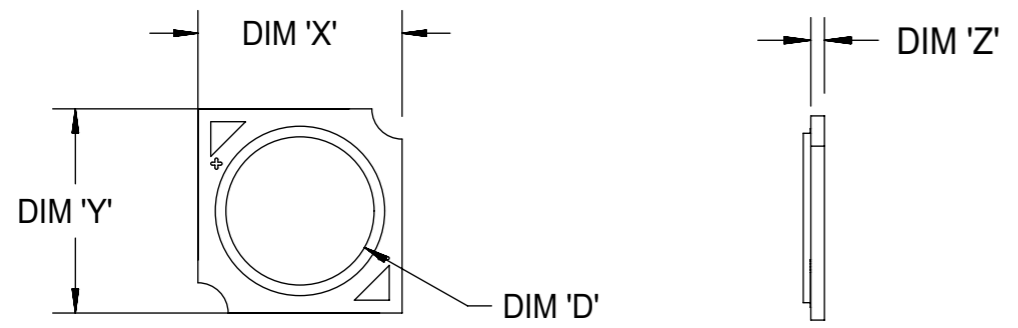
YYWW CD X
180414-02X2



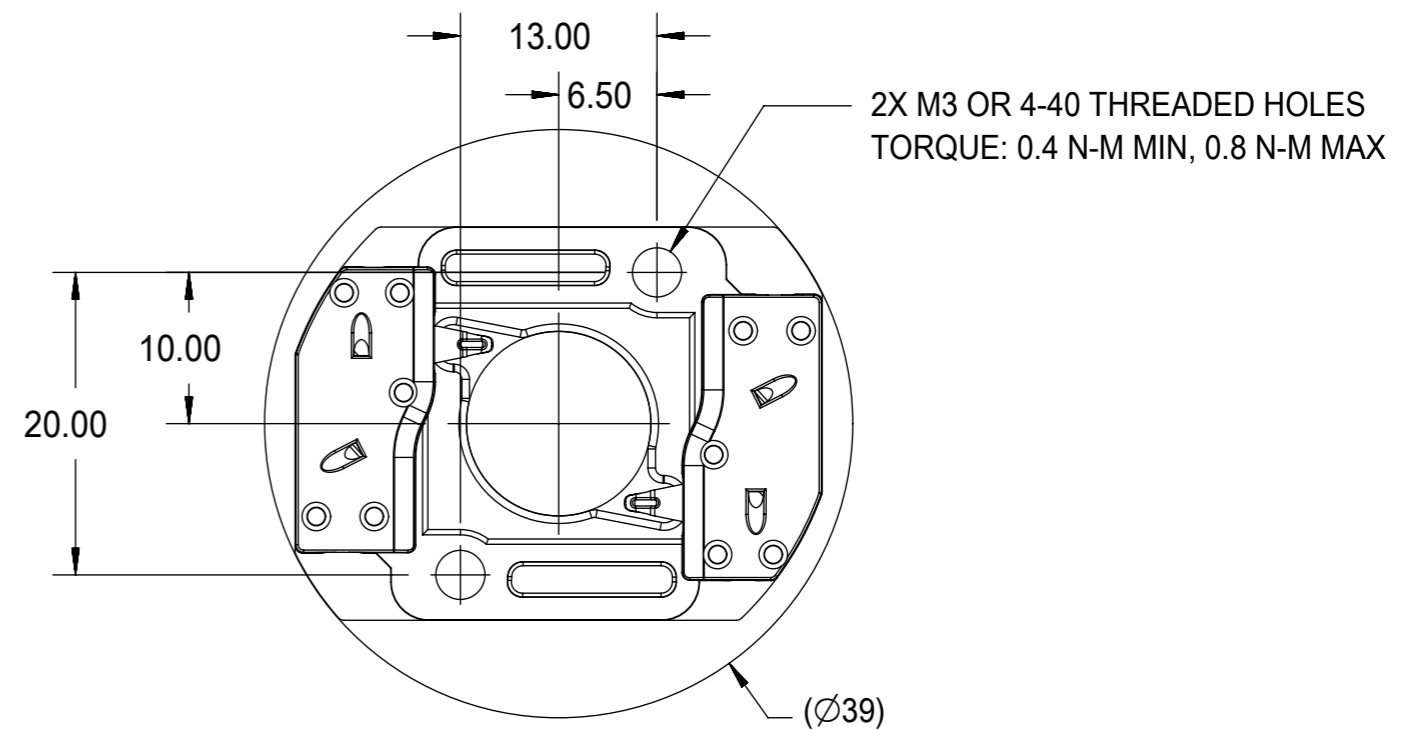
ISO VIEW2
SCALE 1:1

THIS DRAWING CONTAINS INFORMATION THAT IS PROPRIETARY TO MOLEX ELECTRONIC TECHNOLOGIES, LLC AND SHOULD NOT BE USED WITHOUT WRITTEN PERMISSION									
DIMENSION UNITS mm		SCALE 1:1		CURRENT REV DESC:				molex	
GENERAL TOLERANCES (UNLESS SPECIFIED)				EC NO: 603651					
ANGULAR TOL ± 0.5°				DRWN: SCHEN76 2018/08/22				COB LED HOLDER ASSEMBLY 13.5MM X 13.5MM SQUARE	
4 PLACES ±				CHK'D: BPISZCZOR 2018/08/30				PRODUCT CUSTOMER DRAWING	
3 PLACES ±				APPR: BPISZCZOR 2018/08/30				DOCUMENT NUMBER	
2 PLACES ± 0.13				INITIAL REVISION:				SD-180414-102	
1 PLACE ± 0.25				DRWN: MCOLE 2012/05/24				DOC TYPE	
0 PLACES ±				APPR: DMCGOWAN 2012/08/06				PSD	
DRAFT WHERE APPLICABLE MUST REMAIN WITHIN DIMENSIONS		THIRD ANGLE PROJECTION		DRAWING		SERIES		SHEET NUMBER	
		A3-SIZE		180414		GENERAL MARKET		2 OF 3	

COB MFG	TYPE	DIM 'X'	DIM 'Y'	DIM 'Z'	DIM 'D'
CITIZEN	CLL020, CLL022, CLU024, CLU026, CLU028	13.5	13.5	0.90	11.2
TRIDONIC	SLE G5 LES10	13.5	13.5	0.90	9.4
SEOUL	ZC6	13.5	13.5	0.90	10.0
CITIZEN	CLU025, CLU027	13.5	13.5	0.90	7.4
CITIZEN	CLU700, CLU701	13.5	13.5	0.90	7.8
EVERLIGHT	EAHP1313WA*, EAHP1313WB*, EAHP1313WC*	13.5	13.5	0.90	10.8
EVERLIGHT	EA1313 36V/3W	13.5	13.5	0.90	10.8
EVERLIGHT	EA1313 36V/6W	13.5	13.5	0.90	10.8
EVERLIGHT	EA1313 36V/10W	13.5	13.5	0.90	10.8
EVERLIGHT	EA1313 36V/13W	13.5	13.5	0.90	10.8
VOSSLOH-SCHWABE	DMC122C	13.5	13.5	1.00	10.0
BRIDGELUX	GEN7. V10	13.5	13.5	1.00	10.65



COB LED
SCALE 2:1

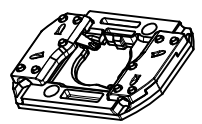


RECOMMENDED MOUNTING DIMENSIONIS

- NOTES:
1. APPLICATION SPECIFICATION: AS-180412-001
 2. FOR USE WITH: 13.5 MM X 13.5 MM COB
 3. WIRE GAUGE: 18, 20 AND 22 AWG, SOLID OR STRANDED WITH TIN OVERCOAT. STRIP LENGTH 10MM +2.0/-0.0MM. RECOMMENDED MAXIMUM DIAMETER AFTER TINNING: 1.40MM. LARGER DIAMETER WIRES ARE ACCEPTABLE IF FULLY INSERTABLE IN WIRE TRAP AND NO WITHDRAWAL WITHIN 20N FORCE.
 4. IF REWORK IS REQUIRED, WIRE MUST BE REPLACED WITH SAME AWG AND TYPE. CARE MUST BE TAKEN NOT TO DAMAGE WIRE TRAP. REWORK IS ACCEPTABLE IF WIRE IS FULLY INSERTABLE IN WIRE TRAP AND NO WITHDRAWAL WITHIN 20N FORCE.

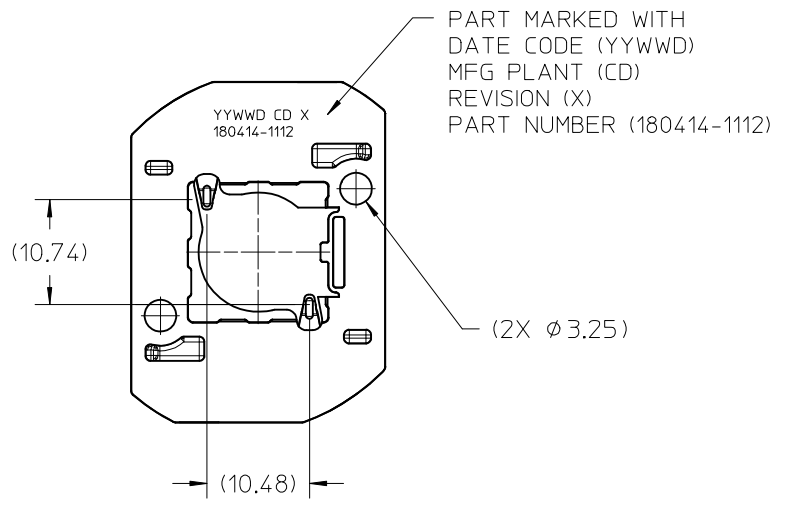
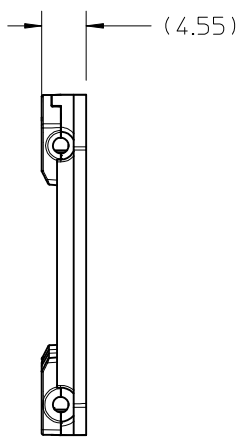
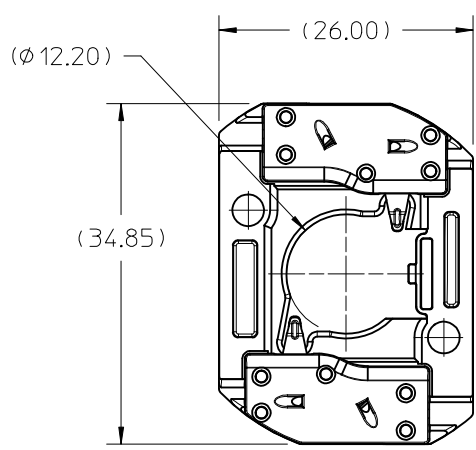
THIS DRAWING CONTAINS INFORMATION THAT IS PROPRIETARY TO MOLEX ELECTRONIC TECHNOLOGIES, LLC AND SHOULD NOT BE USED WITHOUT WRITTEN PERMISSION									
DIMENSION UNITS	SCALE	CURRENT REV DESC:							
mm	1:1								
GENERAL TOLERANCES (UNLESS SPECIFIED)		EC NO: 603651			COB LED HOLDER ASSEMBLY 13.5MM X 13.5MM SQUARE				
ANGULAR TOL	± 0.5°	DRWN: SCHEN76 2018/08/22			PRODUCT CUSTOMER DRAWING				
4 PLACES	±	CHK'D: BPISZCZOR 2018/08/30			DOCUMENT NUMBER				
3 PLACES	±	APPR: BPISZCZOR 2018/08/30			SD-180414-102				
2 PLACES	± 0.13	INITIAL REVISION:			DOC TYPE				
1 PLACE	± 0.25	DRWN: MCOLE 2012/05/24			PSD				
0 PLACES	±	APPR: DMCGOWAN 2012/08/06			DOC PART				
DRAFT WHERE APPLICABLE MUST REMAIN WITHIN DIMENSIONS		THIRD ANGLE PROJECTION	DRAWING	SERIES	MATERIAL NUMBER	CUSTOMER	REVISION		
			A3-SIZE	180414		GENERAL MARKET	001	C3	
								SHEET NUMBER	
								3 OF 3	

10	9	8	7	6	5	4	3	2	1
PART NUMBER	DESCRIPTION		POCKET DEPTH	HOUSING	TERMINAL	CAP			
180414-1112	COB LED HOLDER ASSEMBLY		0.90	180413-1112	180155-0133	180154-0105			
180414-2112	COB LED HOLDER ASSEMBLY		0.75	180413-2112	180155-0133	180154-0105			



ISO VIEW 1
SCALE 1:1

P/N 180414-1112 HOLDER ASSEMBLY
(0.90 POCKET DEPTH)



PART MARKED WITH
DATE CODE (YYWWD)
MFG PLANT (CD)
REVISION (X)
PART NUMBER (180414-1112)

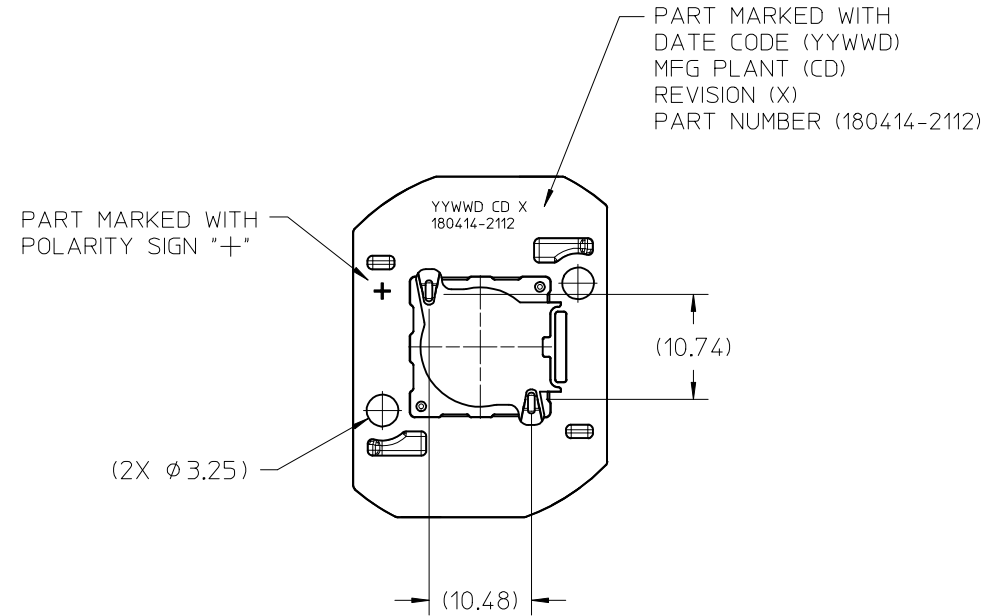
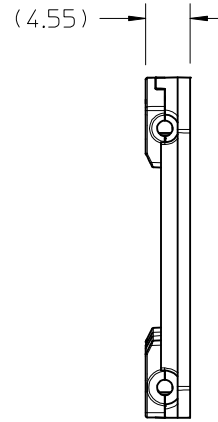
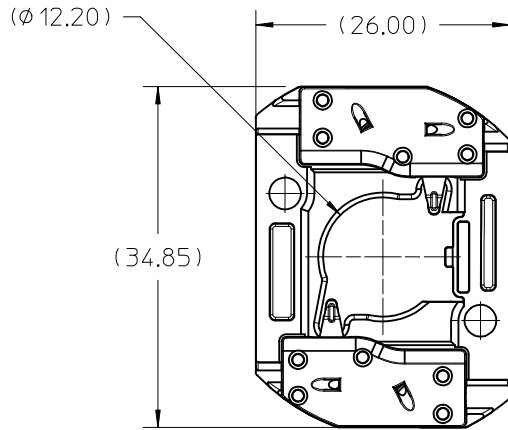
- NOTES:
1. MATERIALS: HOUSING AND CAPS: POLYESTER PBT GLASS FILLED; COLOR: WHITE; TERMINAL: COPPER ALLOY
 2. FINISHES: TERMINAL CONTACT: SELECT GOLD OVER NICKEL WIRE TRAP: SELECT TIN OVER NICKEL
 3. PRODUCT SPECIFICATION: 180414-0000-PS
 4. PACKAGING SPECIFICATION: PK-180419-005
 5. UL:OLFB2 UL496 FILE NO. E345583
 6. ELV AND ROHS COMPLIANT
 7. FOR USE WITH: 13.5 MM X 13.5 MM COB LED
 8. WIRE GAUGE: 18, 20, AND 22 AWG, SOLID OR STRANDED WITH TIN OVERCOAT. STRIP LENGTH 10MM +2.0/-0.0MM.
 9. ALL DIMENSIONS IN PARENTHESES (XX.XX) ARE FOR REFERENCE ONLY

ENTER DESCRIPTION EC NO: SSL2017-0024 DRWNLZABJANOVSKI 2017/02/21 CHKD: APPR:BPISZCZOR 2017/03/07 C4	REVISION DESCRIPTION REV	QUALITY SYMBOLS $\nabla F=0$ $\nabla F=0$ $\nabla F=0$	GENERAL TOLERANCES (UNLESS SPECIFIED)		DIMENSION STYLE MM ONLY		SCALE 2:1	DESIGN UNITS METRIC	THIRD ANGLE PROJECTION
		4 PLACES ± --- ± --- 3 PLACES ± --- ± --- 2 PLACES ± 0.13 ± --- 1 PLACE ± 0.25 ± --- 0 PLACE ± --- ± ---	mm INCH	DRAWN BY DATE MCOLE 2013/12/09	TITLE COB LED HOLDER ASSEMBLY 13.5 MM X 13.5 MM SQUARE				
		ANGULAR ± 1/2°		CHECKED BY DATE MCOLE 2013/12/09	DOCUMENT NO. SD-180414-112				
		DRAFT WHERE APPLICABLE MUST REMAIN WITHIN DIMENSIONS		APPROVED BY DATE DMCGOWAN 2013/12/09	SEE CHART		SHEET NO. 1 OF 5		

THIS DRAWING CONTAINS INFORMATION THAT IS PROPRIETARY TO MOLEX INCORPORATED AND SHOULD NOT BE USED WITHOUT WRITTEN PERMISSION

10 9 8 7 6 5 4 3 2 1

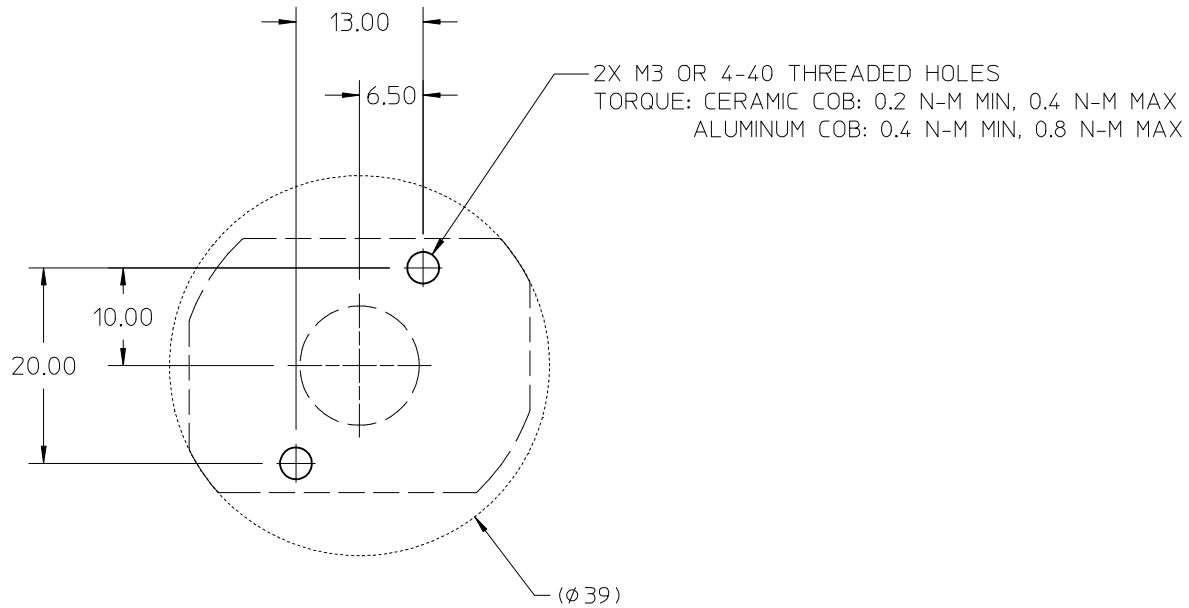
P/N 180414-2112 HOLDER ASSEMBLY (0.75 POCKET DEPTH)



ENTER DESCRIPTION EC NO: SSL2017-0024 /DRWNLZABJANOVSKI 2017/02/21 CHKD: APPR:BPISZCZOR 2017/03/07 REV C4	QUALITY SYMBOLS ▽=0 ▽=0 ▽=0	GENERAL TOLERANCES (UNLESS SPECIFIED) <table border="1"> <thead> <tr> <th></th> <th>mm</th> <th>INCH</th> </tr> </thead> <tbody> <tr> <td>4 PLACES</td> <td>± ---</td> <td>± ---</td> </tr> <tr> <td>3 PLACES</td> <td>± ---</td> <td>± ---</td> </tr> <tr> <td>2 PLACES</td> <td>± 0.13</td> <td>± ---</td> </tr> <tr> <td>1 PLACE</td> <td>± 0.25</td> <td>± ---</td> </tr> <tr> <td>0 PLACE</td> <td>± ---</td> <td>± ---</td> </tr> </tbody> </table> ANGULAR ±1/2°		mm	INCH	4 PLACES	± ---	± ---	3 PLACES	± ---	± ---	2 PLACES	± 0.13	± ---	1 PLACE	± 0.25	± ---	0 PLACE	± ---	± ---	DIMENSION STYLE MM ONLY DRAWN BY DATE MCOLE 2013/12/09 CHECKED BY DATE MCOLE 2013/12/09 APPROVED BY DATE DMCGOWAN 2013/12/09	SCALE 2:1 DESIGN UNITS METRIC THIRD ANGLE PROJECTION	TITLE COB LED HOLDER ASSEMBLY 13.5 MM X 13.5 MM SQUARE molex DOCUMENT NO. SD-180414-112 SHEET NO. 2 OF 5
		mm	INCH																				
	4 PLACES	± ---	± ---																				
	3 PLACES	± ---	± ---																				
	2 PLACES	± 0.13	± ---																				
1 PLACE	± 0.25	± ---																					
0 PLACE	± ---	± ---																					
DRAFT WHERE APPLICABLE MUST REMAIN WITHIN DIMENSIONS		MATERIAL NO. SEE CHART	THIS DRAWING CONTAINS INFORMATION THAT IS PROPRIETARY TO MOLEX INCORPORATED AND SHOULD NOT BE USED WITHOUT WRITTEN PERMISSION																				
		SIZE B																					

9 8 7 6 5 4 3 2 1

10 9 8 7 6 5 4 3 2 1



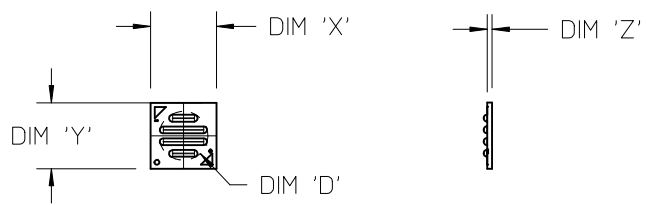
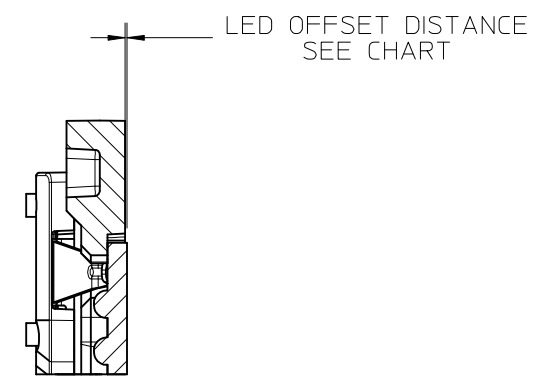
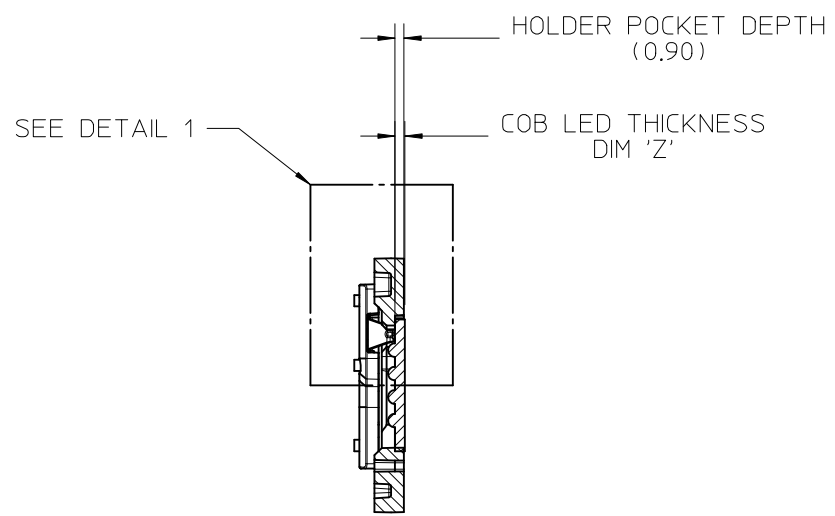
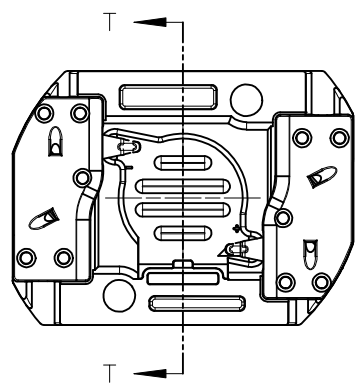
RECOMMENDED MOUNTING DIMENSIONS

ENTER DESCRIPTION EC NO: SSL2017-0024 DRWNL:ZABJANOVSKI 2017/02/21 CHKD: APPR:BPISZCZOR 2017/03/07 REV	QUALITY SYMBOLS	GENERAL TOLERANCES (UNLESS SPECIFIED)		DIMENSION STYLE MM ONLY		SCALE 2:1	DESIGN UNITS METRIC	THIRD ANGLE PROJECTION	
	$\nabla = 0$	mm	INCH	DRAWN BY	DATE	TITLE COB LED HOLDER ASSEMBLY 13.5 MM X 13.5 MM SQUARE			
	$\nabla = 0$	4 PLACES ± ---	± ---	MCOLE	2013/12/09				
	$\nabla = 0$	3 PLACES ± ---	± ---	CHECKED BY	DATE	molex			
$\nabla = 0$	2 PLACES ± 0.13	± ---	MCOLE	2013/12/09					
$\nabla = 0$	1 PLACE ± 0.25	± ---	APPROVED BY	DATE	DOCUMENT NO.		SHEET NO. 3 OF 5		
$\nabla = 0$	0 PLACE ± ---	± ---	DMCGOWAN	2013/12/09	SD-180414-112				
C4		ANGULAR ± 1/2°		MATERIAL NO.		SEE CHART			
		DRAFT WHERE APPLICABLE MUST REMAIN WITHIN DIMENSIONS		SIZE B		THIS DRAWING CONTAINS INFORMATION THAT IS PROPRIETARY TO MOLEX INCORPORATED AND SHOULD NOT BE USED WITHOUT WRITTEN PERMISSION			

9 8 7 6 5 4 3 2 1

10	9	8	7	6	5	4	3	2	1
COB MFG	TYPE	DIM 'X'	DIM 'Y'	DIM 'Z'	DIM 'D'	OFFSET			
VOSSLOH-SCHWABE	DMC122C	13.5	13.5	1.0	10.0	0.10			

ILLUSTRATION OF P/N 180414-1112 HOLDER MATED WITH LED



COB LED
SCALE 1:1

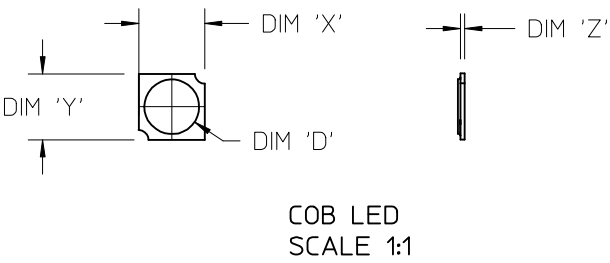
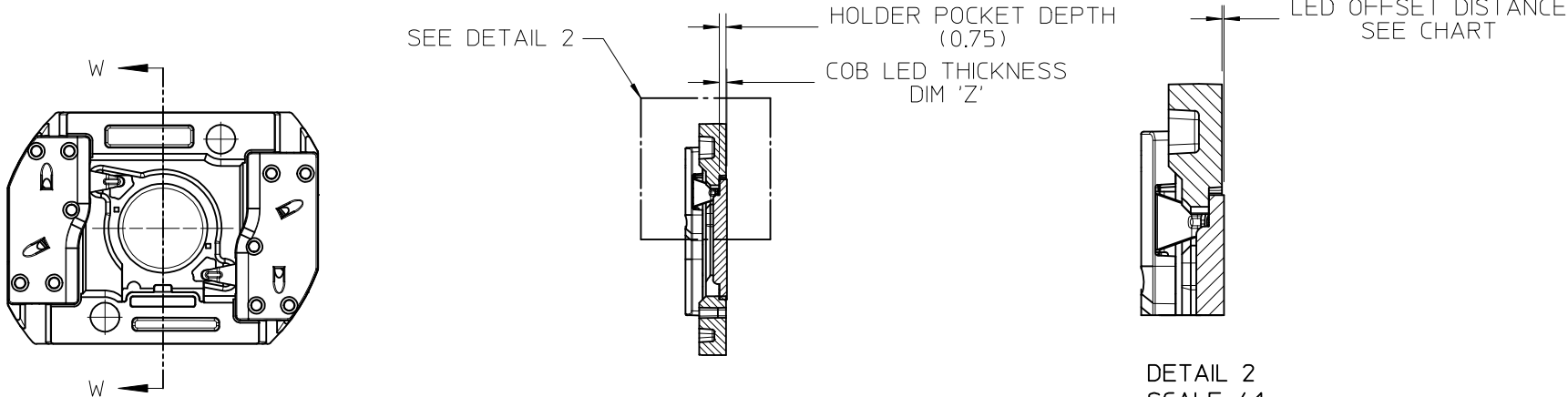
SECTION T-T

DETAIL 1
SCALE 4:1

ENTER DESCRIPTION EC NO: SSL2017-0024 DRWNL:ZAB,JANOVSKI 2017/02/21 CHKD: APPR:BPISZCZOR 2017/03/07 C4	QUALITY SYMBOLS 	GENERAL TOLERANCES (UNLESS SPECIFIED)		DIMENSION STYLE MM ONLY		SCALE 2:1	DESIGN UNITS METRIC	THIRD ANGLE PROJECTION		
		4 PLACES	± ---	± ---	DRAWN BY	DATE	TITLE COB LED HOLDER ASSEMBLY 13.5 MM X 13.5 MM SQUARE			
		3 PLACES	± ---	± ---	MCOLE	2013/12/09				
		2 PLACES	± 0.13	± ---	CHECKED BY	DATE				
		1 PLACE	± 0.25	± ---	MCOLE	2013/12/09				
0 PLACE	± ---	± ---	APPROVED BY	DATE	DOCUMENT NO. SD-180414-112		SHEET NO. 4 OF 5			
ANGULAR ±1/2°		MATERIAL NO. SEE CHART		THIS DRAWING CONTAINS INFORMATION THAT IS PROPRIETARY TO MOLEX INCORPORATED AND SHOULD NOT BE USED WITHOUT WRITTEN PERMISSION						
DRAFT WHERE APPLICABLE MUST REMAIN WITHIN DIMENSIONS		SIZE B								

10	9	8	7	6	5	4	3	2	1
COB MFG	TYPE			DIM 'X'	DIM 'Y'	DIM 'Z'	DIM 'D'	OFFSET	
CITIZEN	CLL020, CLL022, CLU024, CLU026, CLU028			13.5	13.5	0.90	11.2	0.15	
SEOUL	ZC6			13.5	13.5	0.90	10.0	0.15	
TRIDONIC	SLE G5 LES10			13.5	13.5	0.90	9.4	0.15	
CITIZEN	CLU025, CLU027			13.5	13.5	0.90	7.4	0.15	
CITIZEN	CLU700, CLU701			13.5	13.5	0.90	7.8	0.15	
EVERLIGHT	EAHP1313WA*, EAHP1313WB*, EAHP1313WC*			13.5	13.5	0.90	10.8	0.15	
EVERLIGHT	EA1313 36V/3W			13.5	13.5	0.90	10.8	0.15	
EVERLIGHT	EA1313 36V/6W			13.5	13.5	0.90	10.8	0.15	
EVERLIGHT	EA1313 36V/10W			13.5	13.5	0.90	10.8	0.15	
EVERLIGHT	EA1313 36V/13W			13.5	13.5	0.90	10.8	0.15	
VOSSLOH-SCHWABE	DMC122C			13.5	13.5	1.00	10.0	0.25	

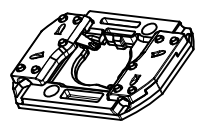
ILLUSTRATION OF P/N 180414-2112 HOLDER MATED WITH LED



SECTION W-W

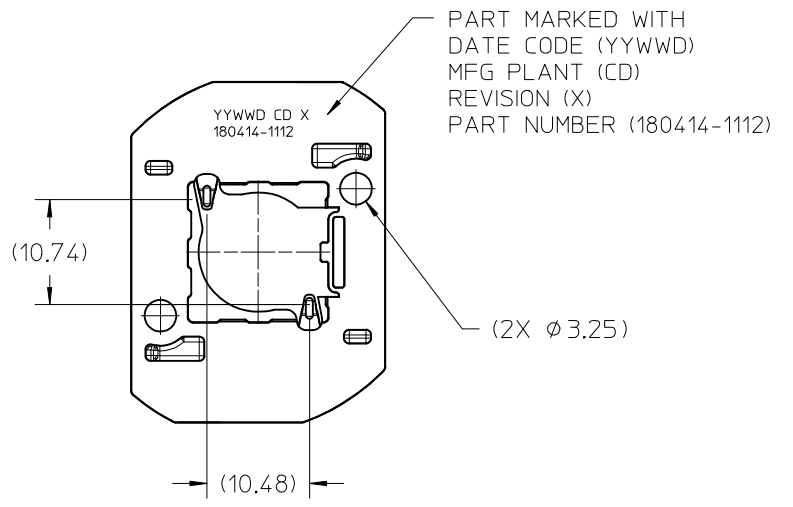
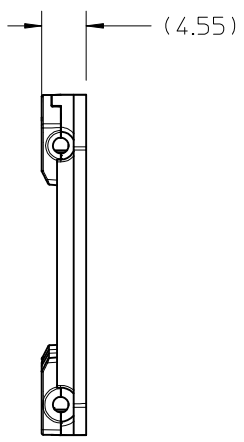
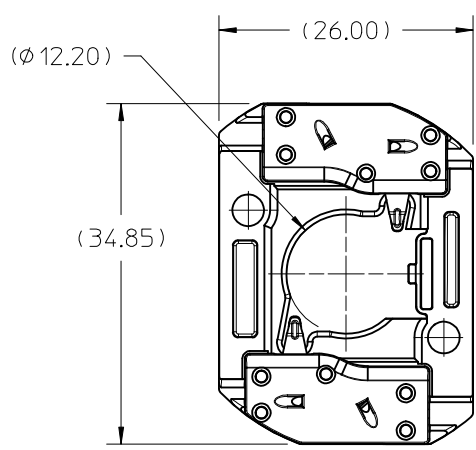
ENTER DESCRIPTION EC NO: SSL2017-0024 DRWNL:ZAB, JANOVSKI 2017/02/21 CHKD: APPR:BP1SZCZOR 2017/03/07 REV C4	QUALITY SYMBOLS $\nabla F/0$ $\nabla F/0$ $\nabla F/0$	GENERAL TOLERANCES (UNLESS SPECIFIED)		DIMENSION STYLE MM ONLY		SCALE 2:1	DESIGN UNITS METRIC	THIRD ANGLE PROJECTION		
		4 PLACES	± ---	± ---	DRAWN BY	DATE	TITLE COB LED HOLDER ASSEMBLY 13.5 MM X 13.5 MM SQUARE			
		3 PLACES	± ---	± ---	MCOLE	2013/12/09				
		2 PLACES	± 0.13	± ---	CHECKED BY	DATE				
1 PLACE	± 0.25	± ---	MCOLE	2013/12/09						
0 PLACE	± ---	± ---	APPROVED BY	DATE	DOCUMENT NO. SD-180414-112		SHEET NO. 5 OF 5			
ANGULAR ±1/2°			MATERIAL NO.		SEE CHART					
DRAFT WHERE APPLICABLE MUST REMAIN WITHIN DIMENSIONS					THIS DRAWING CONTAINS INFORMATION THAT IS PROPRIETARY TO MOLEX INCORPORATED AND SHOULD NOT BE USED WITHOUT WRITTEN PERMISSION					

10	9	8	7	6	5	4	3	2	1
PART NUMBER	DESCRIPTION		POCKET DEPTH	HOUSING	TERMINAL	CAP			
180414-1112	COB LED HOLDER ASSEMBLY		0.90	180413-1112	180155-0133	180154-0105			
180414-2112	COB LED HOLDER ASSEMBLY		0.75	180413-2112	180155-0133	180154-0105			



ISO VIEW 1
SCALE 1:1

P/N 180414-1112 HOLDER ASSEMBLY
(0.90 POCKET DEPTH)



PART MARKED WITH
DATE CODE (YYWWD)
MFG PLANT (CD)
REVISION (X)
PART NUMBER (180414-1112)

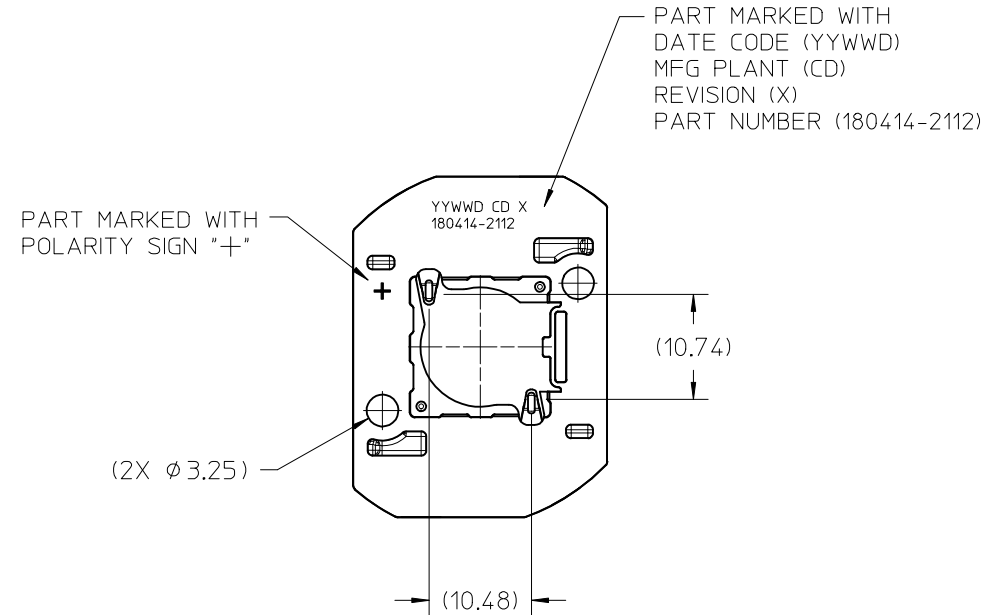
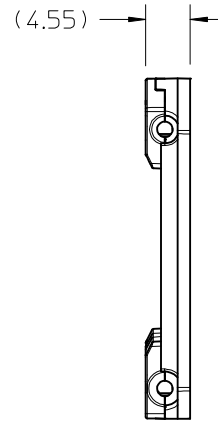
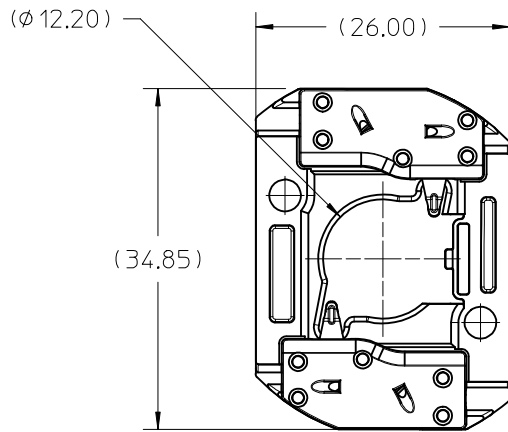
- NOTES:
1. MATERIALS: HOUSING AND CAPS: POLYESTER PBT GLASS FILLED; COLOR: WHITE; TERMINAL: COPPER ALLOY
 2. FINISHES: TERMINAL CONTACT: SELECT GOLD OVER NICKEL WIRE TRAP: SELECT TIN OVER NICKEL
 3. PRODUCT SPECIFICATION: 180414-0000-PS
 4. PACKAGING SPECIFICATION: PK-180419-005
 5. UL:OLFB2 UL496 FILE NO. E345583
 6. ELV AND ROHS COMPLIANT
 7. FOR USE WITH: 13.5 MM X 13.5 MM COB LED
 8. WIRE GAUGE: 18, 20, AND 22 AWG, SOLID OR STRANDED WITH TIN OVERCOAT. STRIP LENGTH 10MM +2.0/-0.0MM.
 9. ALL DIMENSIONS IN PARENTHESES (XX.XX) ARE FOR REFERENCE ONLY

ENTER DESCRIPTION EC NO: SSL2017-0024 DRWNLZABJANOVSKI 2017/02/21 CHKD: APPR:BPISZCZOR 2017/03/07 C4	REVISION DESCRIPTION REV	QUALITY SYMBOLS $\nabla F=0$ $\nabla F=0$ $\nabla F=0$	GENERAL TOLERANCES (UNLESS SPECIFIED)		DIMENSION STYLE MM ONLY		SCALE 2:1	DESIGN UNITS METRIC	THIRD ANGLE PROJECTION
		4 PLACES ± --- ± --- 3 PLACES ± --- ± --- 2 PLACES ± 0.13 ± --- 1 PLACE ± 0.25 ± --- 0 PLACE ± --- ± ---	mm INCH	DRAWN BY DATE MCOLE 2013/12/09	TITLE COB LED HOLDER ASSEMBLY 13.5 MM X 13.5 MM SQUARE				
		ANGULAR ± 1/2°		CHECKED BY DATE MCOLE 2013/12/09	DOCUMENT NO. SD-180414-112				
		DRAFT WHERE APPLICABLE MUST REMAIN WITHIN DIMENSIONS		APPROVED BY DATE DMCGOWAN 2013/12/09	SEE CHART		SHEET NO. 1 OF 5		

THIS DRAWING CONTAINS INFORMATION THAT IS PROPRIETARY TO MOLEX INCORPORATED AND SHOULD NOT BE USED WITHOUT WRITTEN PERMISSION

10 9 8 7 6 5 4 3 2 1

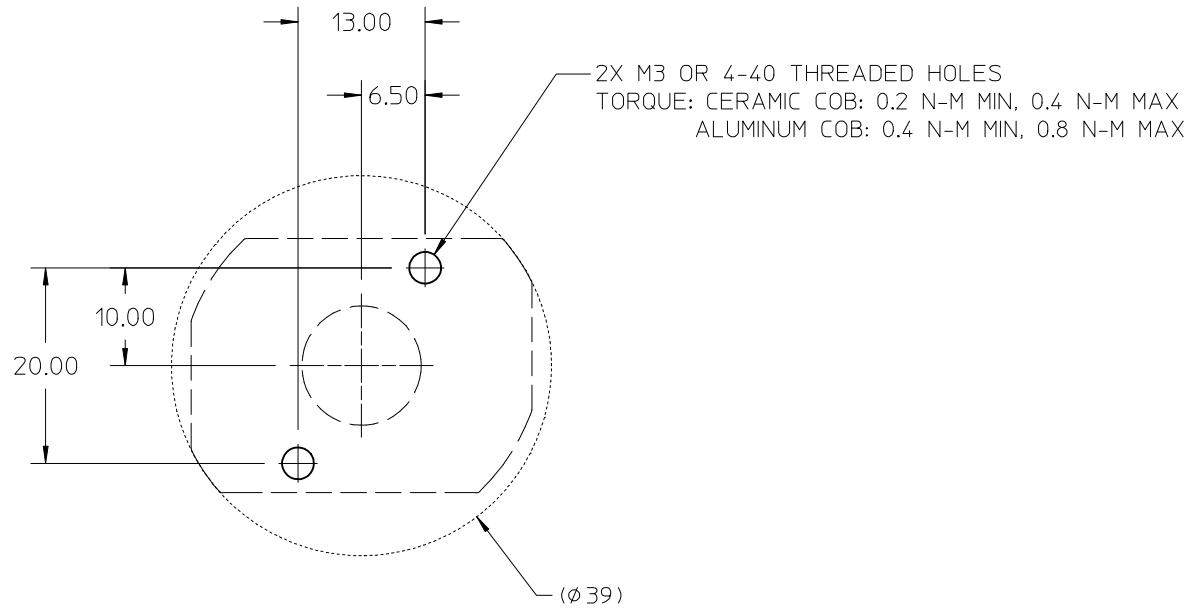
P/N 180414-2112 HOLDER ASSEMBLY (0.75 POCKET DEPTH)



ENTER DESCRIPTION EC NO: SSL2017-0024 /DRMNLZABJANOVSKI 2017/02/21 CHKD: APPR:BPISZCZOR 2017/03/07 REV C4	QUALITY SYMBOLS ▽=0 ▽=0 ▽=0	GENERAL TOLERANCES (UNLESS SPECIFIED) <table border="1"> <thead> <tr> <th></th> <th>mm</th> <th>INCH</th> </tr> </thead> <tbody> <tr> <td>4 PLACES</td> <td>± ---</td> <td>± ---</td> </tr> <tr> <td>3 PLACES</td> <td>± ---</td> <td>± ---</td> </tr> <tr> <td>2 PLACES</td> <td>± 0.13</td> <td>± ---</td> </tr> <tr> <td>1 PLACE</td> <td>± 0.25</td> <td>± ---</td> </tr> <tr> <td>0 PLACE</td> <td>± ---</td> <td>± ---</td> </tr> </tbody> </table> ANGULAR ±1/2°		mm	INCH	4 PLACES	± ---	± ---	3 PLACES	± ---	± ---	2 PLACES	± 0.13	± ---	1 PLACE	± 0.25	± ---	0 PLACE	± ---	± ---	DIMENSION STYLE MM ONLY DRAWN BY DATE MCOLE 2013/12/09 CHECKED BY DATE MCOLE 2013/12/09 APPROVED BY DATE DMCGOWAN 2013/12/09	SCALE 2:1 DESIGN UNITS METRIC THIRD ANGLE PROJECTION	TITLE COB LED HOLDER ASSEMBLY 13.5 MM X 13.5 MM SQUARE molex DOCUMENT NO. SD-180414-112 SHEET NO. 2 OF 5
		mm	INCH																				
	4 PLACES	± ---	± ---																				
	3 PLACES	± ---	± ---																				
	2 PLACES	± 0.13	± ---																				
1 PLACE	± 0.25	± ---																					
0 PLACE	± ---	± ---																					
DRAFT WHERE APPLICABLE MUST REMAIN WITHIN DIMENSIONS		MATERIAL NO. SEE CHART	THIS DRAWING CONTAINS INFORMATION THAT IS PROPRIETARY TO MOLEX INCORPORATED AND SHOULD NOT BE USED WITHOUT WRITTEN PERMISSION																				
		SIZE B																					

9 8 7 6 5 4 3 2 1

10 9 8 7 6 5 4 3 2 1



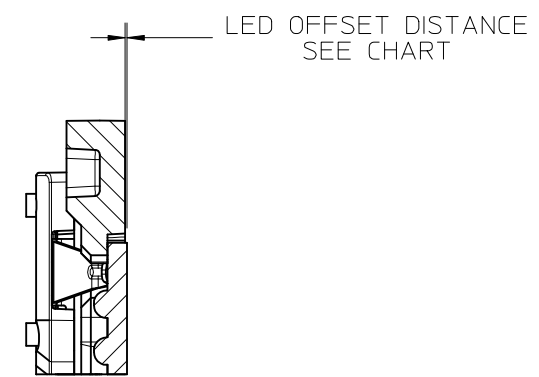
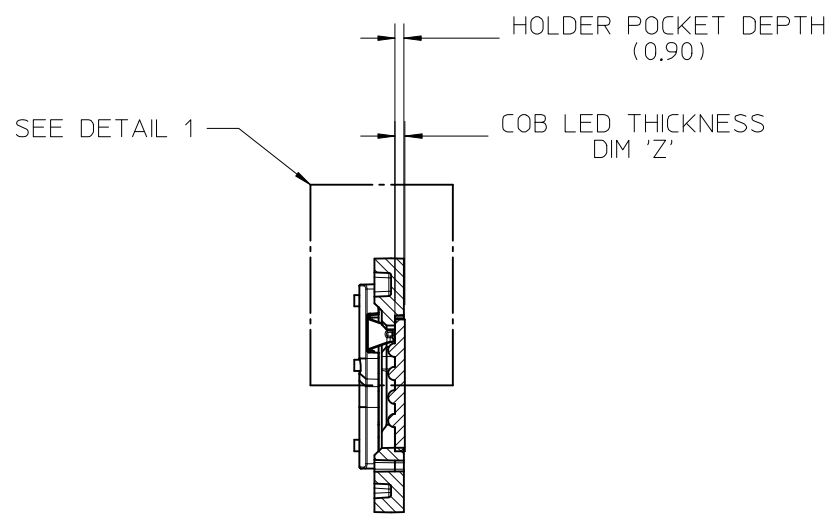
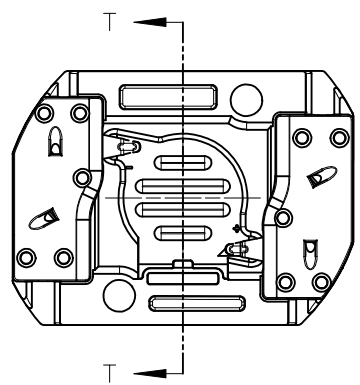
RECOMMENDED MOUNTING DIMENSIONS

ENTER DESCRIPTION EC NO: SSL2017-0024 DRWNL:ZABJANOVSKI 2017/02/21 CHKD: APPR:BPISZCZOR 2017/03/07 REV	QUALITY SYMBOLS	GENERAL TOLERANCES (UNLESS SPECIFIED)	DIMENSION STYLE	SCALE	DESIGN UNITS	THIRD ANGLE PROJECTION
	▽=0	mm INCH	MM ONLY	2:1	METRIC	☉ □
	▽=0	4 PLACES ± --- ± ---	DRAWN BY DATE	TITLE	COB LED HOLDER ASSEMBLY 13.5 MM X 13.5 MM SQUARE	
	▽=0	3 PLACES ± --- ± ---	MCOLE 2013/12/09			
▽=0	2 PLACES ± 0.13 ± ---	CHECKED BY DATE	DOCUMENT NO.		SHEET NO.	
	1 PLACE ± 0.25 ± ---	MCOLE 2013/12/09	SD-180414-112		3 OF 5	
	0 PLACE ± --- ± ---	APPROVED BY DATE	THIS DRAWING CONTAINS INFORMATION THAT IS PROPRIETARY TO MOLEX INCORPORATED AND SHOULD NOT BE USED WITHOUT WRITTEN PERMISSION			
		DMCGOWAN 2013/12/09				
		ANGULAR ± 1/2°				
		DRAFT WHERE APPLICABLE MUST REMAIN WITHIN DIMENSIONS				
			SEE CHART			
			SIZE B			

9 8 7 6 5 4 3 2 1

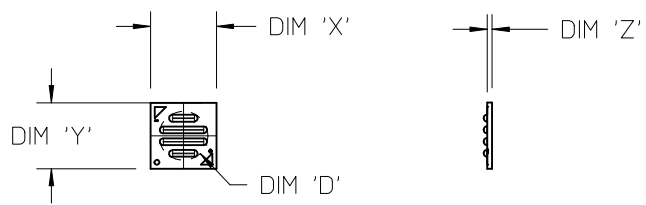
10	9	8	7	6	5	4	3	2	1
COB MFG	TYPE	DIM 'X'	DIM 'Y'	DIM 'Z'	DIM 'D'	OFFSET			
VOSSLOH-SCHWABE	DMC122C	13.5	13.5	1.0	10.0	0.10			

ILLUSTRATION OF P/N 180414-1112 HOLDER MATED WITH LED



SECTION T-T

DETAIL 1
SCALE 4:1

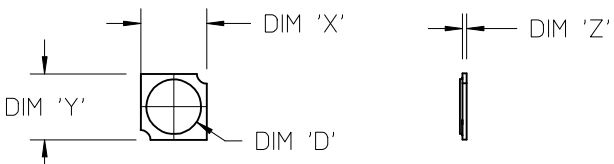
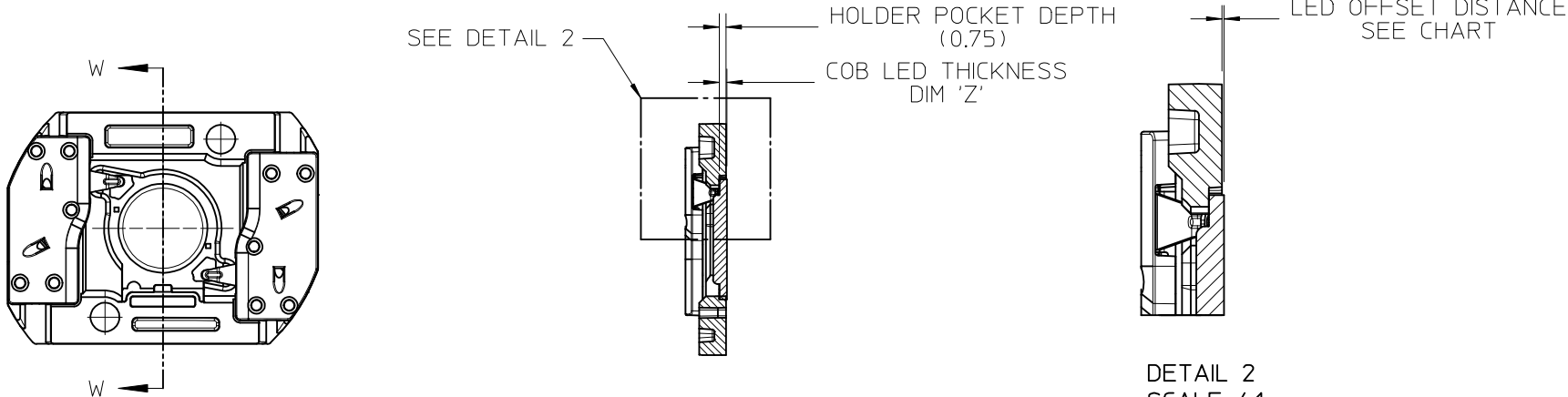


COB LED
SCALE 1:1

ENTER DESCRIPTION EC NO: SSL2017-0024 DRWNL:ZAB, JANOVSKI 2017/02/21 CHKD: APPR:BPISZCZOR 2017/03/07 C4	QUALITY SYMBOLS 	GENERAL TOLERANCES (UNLESS SPECIFIED)		DIMENSION STYLE MM ONLY		SCALE 2:1	DESIGN UNITS METRIC	THIRD ANGLE PROJECTION		
		4 PLACES	± ---	± ---	DRAWN BY	DATE	TITLE COB LED HOLDER ASSEMBLY 13.5 MM X 13.5 MM SQUARE			
		3 PLACES	± ---	± ---	MCOLE	2013/12/09				
		2 PLACES	± 0.13	± ---	CHECKED BY	DATE				
		1 PLACE	± 0.25	± ---	MCOLE	2013/12/09				
0 PLACE	± ---	± ---	APPROVED BY	DATE	DOCUMENT NO. SD-180414-112		SHEET NO. 4 OF 5			
ANGULAR ±1/2°		MATERIAL NO. SEE CHART		THIS DRAWING CONTAINS INFORMATION THAT IS PROPRIETARY TO MOLEX INCORPORATED AND SHOULD NOT BE USED WITHOUT WRITTEN PERMISSION						

10	9	8	7	6	5	4	3	2	1
COB MFG	TYPE			DIM 'X'	DIM 'Y'	DIM 'Z'	DIM 'D'	OFFSET	
CITIZEN	CLL020, CLL022, CLU024, CLU026, CLU028			13.5	13.5	0.90	11.2	0.15	
SEOUL	ZC6			13.5	13.5	0.90	10.0	0.15	
TRIDONIC	SLE G5 LES10			13.5	13.5	0.90	9.4	0.15	
CITIZEN	CLU025, CLU027			13.5	13.5	0.90	7.4	0.15	
CITIZEN	CLU700, CLU701			13.5	13.5	0.90	7.8	0.15	
EVERLIGHT	EAHP1313WA*, EAHP1313WB*, EAHP1313WC*			13.5	13.5	0.90	10.8	0.15	
EVERLIGHT	EA1313 36V/3W			13.5	13.5	0.90	10.8	0.15	
EVERLIGHT	EA1313 36V/6W			13.5	13.5	0.90	10.8	0.15	
EVERLIGHT	EA1313 36V/10W			13.5	13.5	0.90	10.8	0.15	
EVERLIGHT	EA1313 36V/13W			13.5	13.5	0.90	10.8	0.15	
VOSSLOH-SCHWABE	DMC122C			13.5	13.5	1.00	10.0	0.25	

ILLUSTRATION OF P/N 180414-2112 HOLDER MATED WITH LED



COB LED
SCALE 1:1

SECTION W-W

DETAIL 2
SCALE 4:1

ENTER DESCRIPTION EC NO: SSL2017-0024 DRWNL:ZABJANOVSKI 2017/02/21 CHKD: APPR:BP1SZCZOR 2017/03/07 C4	QUALITY SYMBOLS $\nabla F/0$ $\nabla F/0$ $\nabla F/0$	GENERAL TOLERANCES (UNLESS SPECIFIED)		DIMENSION STYLE MM ONLY		SCALE 2:1	DESIGN UNITS METRIC	THIRD ANGLE PROJECTION		
				DRAWN BY MCOLE	DATE 2013/12/09	TITLE COB LED HOLDER ASSEMBLY 13.5 MM X 13.5 MM SQUARE				
				CHECKED BY MCOLE	DATE 2013/12/09					
				APPROVED BY DMCGOWAN	DATE 2013/12/09					
				MATERIAL NO.		SEE CHART		DOCUMENT NO. SD-180414-112	SHEET NO. 5 OF 5	
		DRAFT WHERE APPLICABLE MUST REMAIN WITHIN DIMENSIONS								
THIS DRAWING CONTAINS INFORMATION THAT IS PROPRIETARY TO MOLEX INCORPORATED AND SHOULD NOT BE USED WITHOUT WRITTEN PERMISSION										