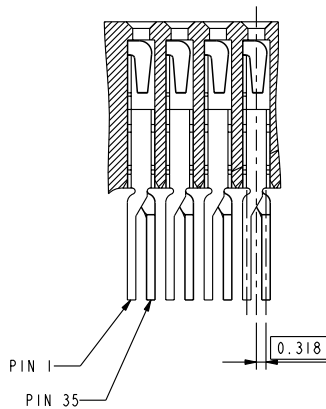


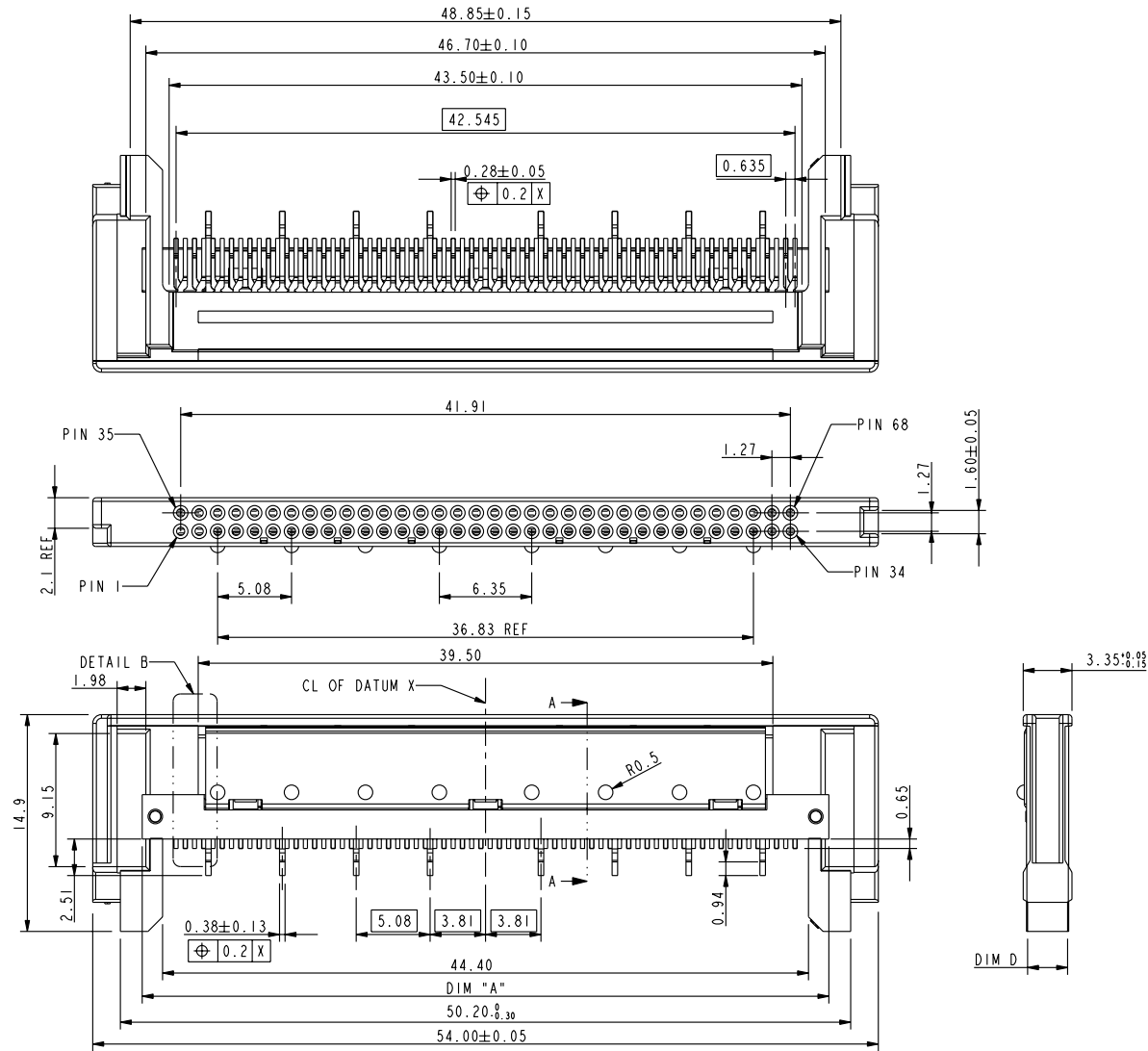
Tous droits strictement reserves. Reproduction ou communication a des tiers interdite sous quelque forme que ce soit sans autorisation écrite du propriétaire. Propriete de c FCI. Droits de reproduction FCI.



All rights strictly reserved. Reproduction or issue to third parties in any form without written authority from the proprietor. Property of FCI. Copyright FCI.



DETAIL B
SCALE 4.0



mat'l code				tolerances unless otherwise specified		CUSTOMER		FCI	
ltr	ecn no.	dr	date	linear	.X ± 0.3	projection	COPY	www.fciconnect.com	
A	DG06-0339	P M	08/14/'06		.XX ± 0.13			title	
B	DG08-0009	C S	07/01/'08		.XXX ± 0.05			68P CARDBUS RECEPTACLE ASS'Y	
C	DG08-0116	NZ	05/27/'08	angles	0° ± 2°	MM	scale 1.000	product family PCMCIA	
				dr	PM Zheng 08/14/'06			code	
				enrg	PM Zheng 08/14/'06			size	
				chr	Beer Fu 08/14/'06	A	dwg no	10071885	
				appd	Joseph Hsia 08/14/'06			sheet 1 of 2	
sheet index		revision sheet	C 1	C 2				cage code	

THIS FILE WAS ORIGINALLY CREATED IN THE PRO ENGINEER ENVIRONMENT AND ANY FUTURE REVISIONS TO THIS FILE MUST BE MADE IN THE PRO ENGINEER ENVIRONMENT

form no. 7530-001-103

cage code 22526

PDM: Rev:C

STATUS:Released

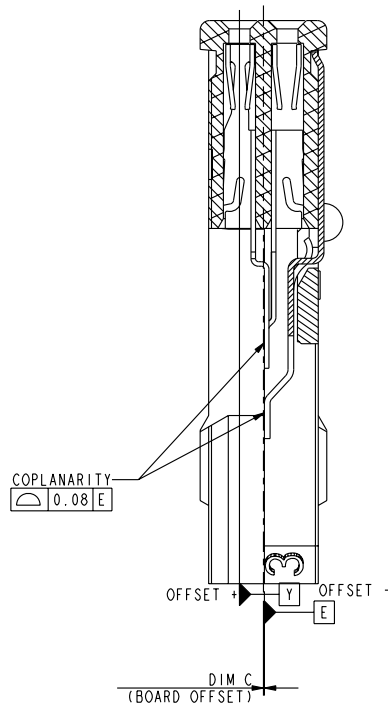
Printed: Jun 07, 2008

Tous droits strictement reserves. Reproduction ou communication a des tiers interdite sous quelque forme que ce soit sans autorisation écrite du propriétaire. Propriete de c FCI. Droits de reproduction FCI.



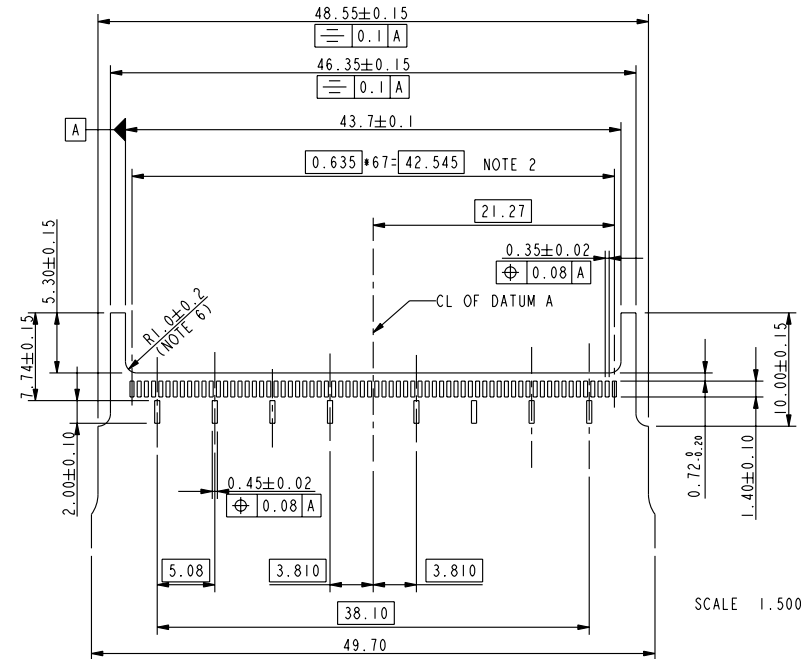
All rights strictly reserved. Reproduction or issue to third parties in any form whatever is not permitted without written authority from the proprietor. Property of FCI. Copyright FCI.

PRODUCT NUMBER	DIM A	BOARD OFFSET DIM C	DIM D	PACKING
10071885-001LF	47.20±0.10	0	2.85±0.05	SEE NOTE 5 FOR DETAIL DESCRIPTION



SECTION A-A
SCALE 5.000


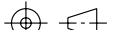
THIS FILE WAS ORIGINALLY CREATED IN THE PRO
ENGINEER ENVIRONMENT AND ANY FUTURE REVISIONS TO
THIS FILE MUST BE MADE IN THE PRO ENGINEER
ENVIRONMENT



Recommended PCB layout

NOTE:

- MATERIAL:
CONTACT: PHBR 0.12±
GROUND SHIELD: BRASS 0.15±
HOUSING: LCP UL 94V-0, BLACK
- FINISH:
CONTACT: ALL OVER --- Ni UNDER 0.5-2 MICRON; CONTACT --- Au OR GXT PLATING 0.38-0.80 MICRON;
SOLDER TAIL --- MATT TIN LEAD 2.5-5 MICRON.
GROUND SHIELD: ALL OVER --- Ni UNDER 1.27-3 MICRON; CONTACT --- Au OR GXT PLATING 0.38-0.80 MICRON
ONLY FOR DIMPLE SURFACE AND OTHER SURFACE DIMPLES ARE 0.025-0.25 MICRON GOLD FLASH
SOLDER TAIL --- MATT TIN 3.8-7 MICRON.
- MAX. BOW OF PCB ON THIS DIMENSION IS 0.1mm.
- MATED CONNECTOR SHOULD BE BASED ON JEIDA AND PCMCIA SPECIFICATION.
- PACKING DETAIL: (REFER TO GS-14-723 AND GS-14-920)
-XXXLTF USE TAPE AND REEL 750 PCS / REEL.
-XXXHLF USE TRAY PACKAGE 2160 PCS/CARTON AND PRODUCT ORIENTATION IN TRAY PER THE REQUEST FROM SAMSUNG
- ELIMINATE THE CORNER TO PREVENT INTERFERENCE WITH SOLDER TAIL.
- PRODUCT SPEC. REFER TO GS-12-228.
- 10071885-XXXLF PRODUCTS MEET EUROPEAN UNION DIRECTIVES AND OTHER COUNTRY REGULATIONS AS DESCRIBED IN GS-22-008
- THE HOUSING WILL WITHSTAND EXPOSURE TO 260°C PEAK TEMPERATURE FOR 10 SECONDS IN IR-REFLOW.

mat'l code				tolerances unless otherwise specified				CUSTOMER				www.fciconnect.com	
ltr	ecn no.	dr	date	linear	.X±0.3				projection	COPY	title 68P CARDBUS RECEPTACLE ASS'Y		
C					.XX±0.13								
					.XXX±0.05								
				angles	0°±2°					MM	product family PCMCIA		
				dr	PM Zheng	08/14/'06							
				enrg	PM Zheng	08/14/'06							
					chr	Beer Fu	08/14/'06		scale	1.000	A	dwg no 10071885	
				appd	Joseph Hsia	08/14/'06							
sheet index		revision sheet											

form no. 7530-001-103

cage code 22526

PDM: Rev:C

STATUS:Released

Printed: Jun 07, 2008

Mouser Electronics

Authorized Distributor

Click to View Pricing, Inventory, Delivery & Lifecycle Information:

[FCI / Amphenol:](#)

[10071885-001HLF](#)