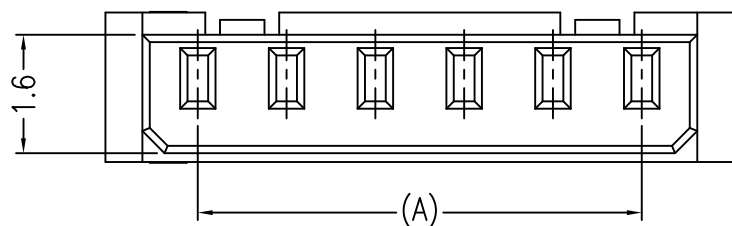
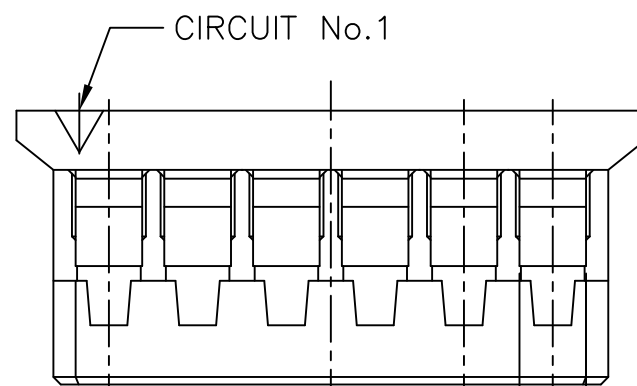
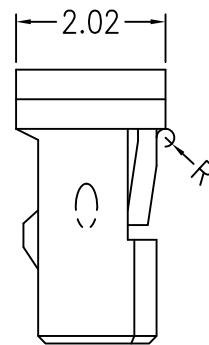
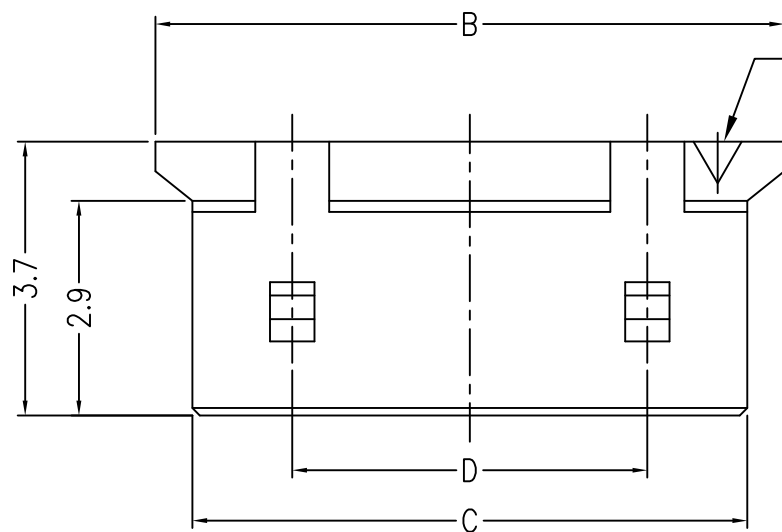
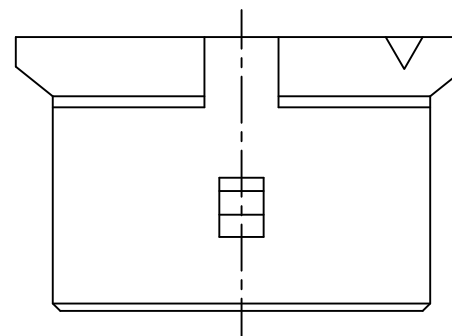
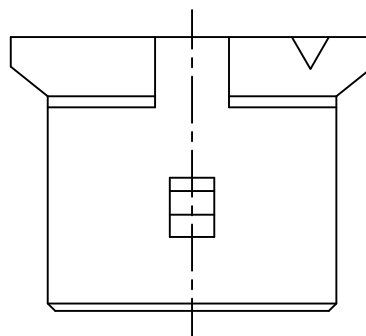
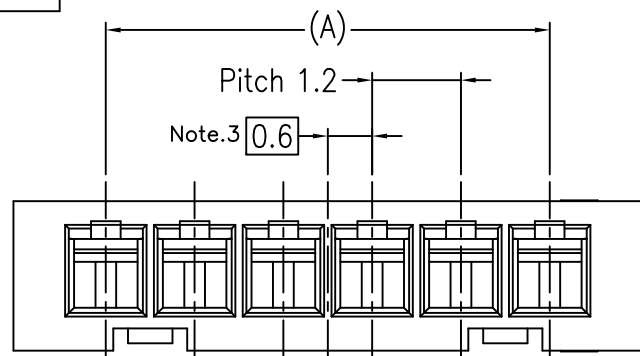


PRODUCT NO.

10125836-**-001**

10125836-03-001

10125836-04-001



	2,000	1,000	4.8	7.5	8.5	6.0	10125836-06-001SP	6
20,000	5,000						10125836-06-001	
	2,000	2,000		5.1	6.1	3.6	10125836-04-001SP	4
40,000	10,000						10125836-04-001	
	2,000	2,000		3.9	4.9	2.4	10125836-03-001SP	3
40,000	10,000						10125836-03-001	
INNER BOX (pcs)	INNER BOX (pcs)	POLY BAG (pcs)	D	C	B	A	PRODUCT NO.	CIRCUIT

mat'l. code		surface		tolerance		projection		product family		CODE	
---		ISO 1302		ISO 406		MM		PLUG HOUSING		JP	
tolerances unless otherwise specified		angles		linear		scale 10:1		title		sheet 1 of 1 size	
A RELEASED		Y.K 2013-12-17		0.X ±0.3		FCJ		FOR 1.2mm PITCH WTB CONNECTOR		A3	
B REVISED		ELX-J-17235 Y.K 2014-03-19		0.XX ±0.3				dwg no		10125836	
C REVISED		ELX-J-17474 Y.K 2014-04-16		0.XXX ±0.3				type		Product Customer Drawing	
D REVISED		ELX-J-22423 Y.K 2015-11-06		dr Y.KAMEDA 2015-11-09				Rev.		E	
E REVISED		ELX-J-22440 Y.K 2015-11-09		enr Y.KAMEDA 2015-11-09				Rev.		E	
				chr H.SUZUKI 2015-11-09							
				appd N.SASAME 2015-11-09							
sheet index		revision sheet									

- Note
- Mate with : P/N10125839-****EHLF
 - Applicable terminal : P/N10125837-*****
 - Apply even circuit products. odd circuit products is 0mm.
 - Material : High Temp Thermoplastic, UL94V-0, Black
 - This product meet European Union Directives and other country regulations as described GS-22-008

Mouser Electronics

Authorized Distributor

Click to View Pricing, Inventory, Delivery & Lifecycle Information:

[FCI / Amphenol:](#)

[10125836-04-001SP](#) [10125836-03-001SP](#) [10125836-06-001SP](#) [10125836-03-001](#)