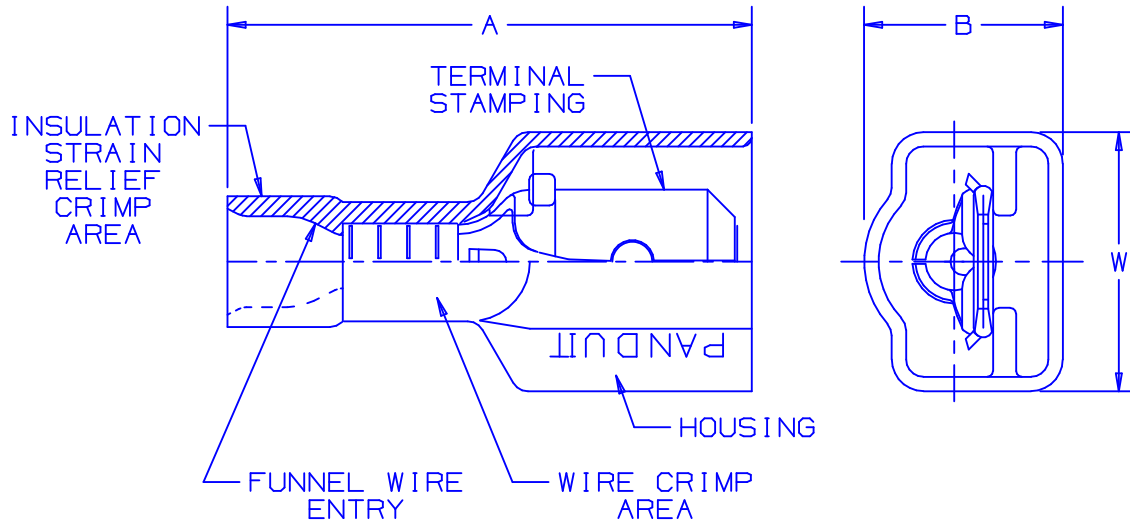
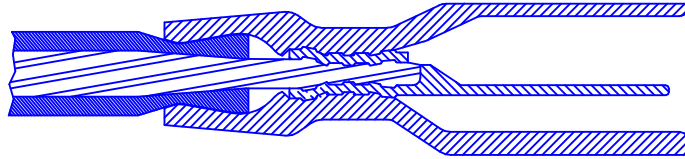


THIS COPY IS PROVIDED ON A RESTRICTED BASIS AND IS NOT TO BE USED IN ANY WAY DETRIMENTAL TO THE INTERESTS OF PANDUIT CORP.



NOTES:

1. USED FOR:
  - A. 600V MAX VOLTAGE RATING
  - B. 221°F (105°C) MAX TEMP RATING
  - C. STRANDED COPPER WIRE ONLY
2. WIRE STRIP LENGTH:  $9/32^{+1/32}_{-0}$  (7.1<sup>+8</sup><sub>0</sub>)
3. MATERIAL:
  - A. STAMPING: NICKEL PLATED BRASS
  - B. HOUSING: PREMIUM GRADE NYLON FOR SUPERIOR STRAIN RELIEF INSULATION CRIMPING
4. PACKAGING:
  - A. STD: -C = 100
  - B. BULK: -M = 1000
5. DIMENSIONS IN BRACKETS ARE IN MILLIMETERS OR mm<sup>2</sup>



SECTION VIEW OF CRIMPED DISCONNECT

PART NUMBER		TAB SIZE	WIRE RANGE AWG (mm <sup>2</sup> )	COLOR	MAX WIRE INSULATION DIAMETER	MIN WIRE INSULATION DIAMETER	DIMENSIONS in			CRIMP TOOLS
PREFIX	PK						A $\pm.03$ (.8)	B $\pm.02$ (.5)	W $\pm.02$ (.5)	
DPF18-250FIM	-M -C	.250 X .032 (6,3 X 0,8)	22-18 (0,5-1,0)	RED	.133 (3,38)	.060 (1,52)	.90 (22,9)	.29 (7,4)	.41 (10,4)	CT-520 CT-1525
DPF14-250FIM	-M -C	.250 X .032 (6,3 X 0,8)	16-14 (1,5-2,5)	BLUE	.156 (3,96)	.090 (2,29)	.90 (22,9)	.29 (7,4)	.41 (10,4)	



A41519\_05

05	7/03	KLFU		UPDATED DRAWING; ADDED CT-1525 TO TOOL CHART						CORP. TINLEY PARK, ILLINOIS DISCOGRIP™ LOOSE PIECE PREMIUM NYLON FULLY INSULATED MALE DISCONNECT .250 X .032				
04	1/01	RM	SKB	FILESPEC WAS N41519AA_PCD_03	8933	CCH	JAC							
03	10/98	JD		MATERIAL WAS TIN PLATED	07642									
02	10/96	TM		UPDATED NOTES AND DIMENSIONS	05140	DH	LA							
REV	DATE	BY	CHK	DESCRIPTION	ECN	QA	PM	SUP	CUST		APP	DRAWN BY KC	CHK'D	SCALE

# Mouser Electronics

Authorized Distributor

Click to View Pricing, Inventory, Delivery & Lifecycle Information:

[Panduit:](#)

[DPF14-250FIM-M](#) [DPF18-250FIM-L](#) [DPF14-250FIM-L](#) [DPF18-250FIM-M](#) [DPF18-250FIM-C](#)