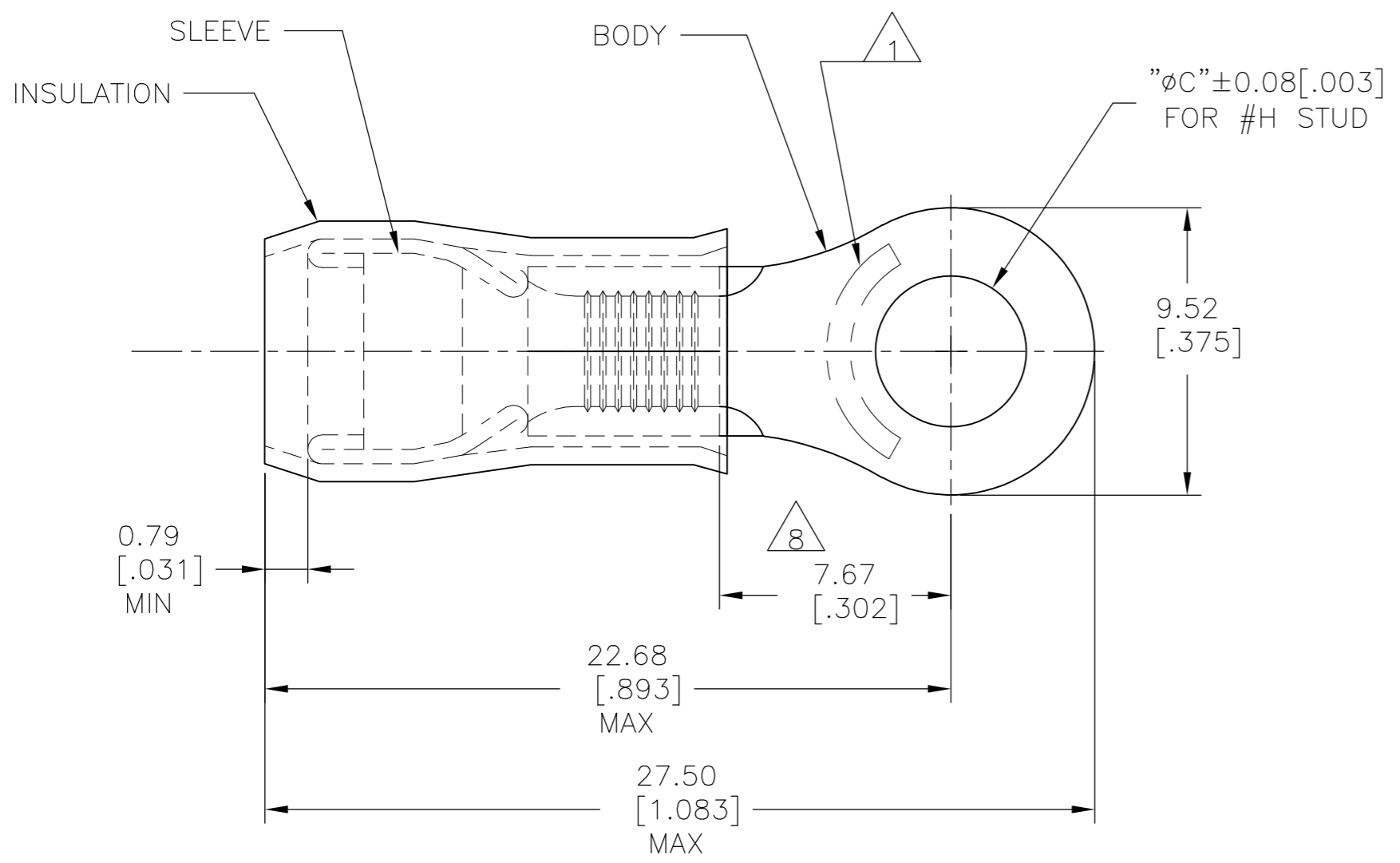


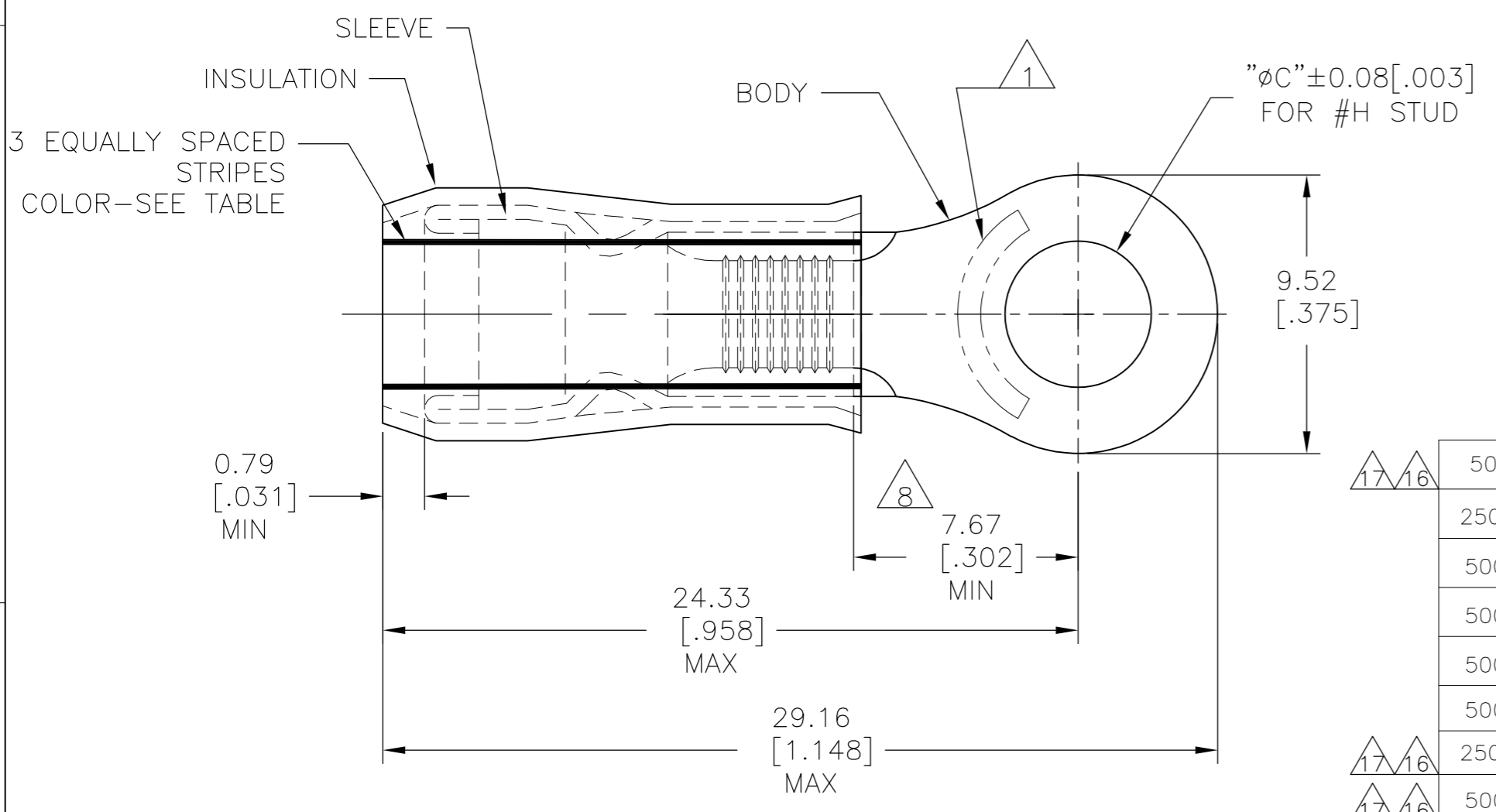
THIS DRAWING IS UNPUBLISHED. RELEASED FOR PUBLICATION
 © COPYRIGHT - By - ALL RIGHTS RESERVED.

REVISIONS				
P	LTR	DESCRIPTION	DATE	APVD
AA2		REVISED PER ECO-16-014868	19OCT2016	RS DR

AMP WIRE RANGE	$\Delta 16$ ΔL E13288 Listed
12-10 AWG SOLID OR STRANDED	12-10 AWG SOLID OR STRANDED
$\Delta 17$ ΔL LR7189 Certified	
12-10 AWG SOLID OR STRANDED	



STYLE A



STYLE B
INSULATION RESTRICTING

- $\Delta 1$ STAMP "AMP - SEE TABLE" APPROX AS SHOWN.
- $\Delta 2$ WIRE INSULATION DIA: SEE TABLE.
- $\Delta 3$ TONGUE MATERIAL THK: 0.99±0.05[.039±.002].
- $\Delta 4$ BODY: TIN PLATE 0.00254[.000100] MIN EXT THK PER ASTM B545.
- $\Delta 5$ SLEEVE: TIN PLATE 0.00254[.000100] MIN EXT THK PER ASTM B545.
- $\Delta 6$ SLEEVE: NICKEL PLATE PER SAE AMS QQ-N-290.
- $\Delta 7$ BODY & SLEEVE- CU PER ASTM B152
INSULATION - NYLON PER ASTM D4066
COLOR - YELLOW.
- $\Delta 8$ APPLIES FROM EDGE OF METAL WIRE BARREL TO CENTER OF STUD HOLE.
- $\Delta 9$ MEETS MS25036-112, CLASS 1 & 2.
- $\Delta 10$ MEETS MS25036-112, CLASS 2.
- $\Delta 11$ MEETS M7928/1-58, CLASS 1 & 2.
- $\Delta 12$ MEETS M7928/1-65, CLASS 1 & 2.
- $\Delta 13$ MEETS M7928/1-56, CLASS 1 & 2.
- $\Delta 14$ MEETS M7928/1-63, CLASS 1 & 2.
- $\Delta 15$ NOTE DELETED.

QTY	PACKAGE TYPE	"H"	"C"	STAMPING	WIRE INSUL DIA	WIRE SIZE	STRIPE COLOR	STYLE	BODY FINISH	SLEEVE FINISH	PART NO
50	LOOSE PIECE, BOX	#10	5.00[.197]	12-10	3.81[.150]-5.84[.230]	12-10	--	A	$\Delta 5$		8-36161-2
2500	ON TAPE & REEL	#10	5.00[.197]	12	3.02[.119]-5.08[.200]	12	BROWN	B	$\Delta 6$	$\Delta 12$	2-36161-8
500	LOOSE PIECE	[#6]M3.5	3.68[.145]	10	3.02[.119]-5.08[.200]	10	BROWN	B	$\Delta 6$	$\Delta 14$	2-36161-6
500	LOOSE PIECE	[#6]M3.5	3.68[.145]	12	2.41[.095]-5.08[.200]	12	YELLOW	B	$\Delta 6$	$\Delta 13$	2-36161-5
500	LOOSE PIECE	#10	5.00[.197]	10	3.02[.119]-5.08[.200]	10	BROWN	B	$\Delta 6$	$\Delta 12$	2-36161-4
500	LOOSE PIECE	#10	5.00[.197]	12	2.41[.095]-5.08[.200]	12	YELLOW	B	$\Delta 6$	$\Delta 11$	2-36161-3
2500	ON TAPE & REEL	#10	5.00[.197]	12-10	3.81[.150]-5.84[.230]	12-10	--	A	$\Delta 5$	$\Delta 10$	2-36161-2
500	LOOSE PIECE	#10	5.00[.197]	12-10	3.81[.150]-5.84[.230]	12-10	--	A	$\Delta 5$	$\Delta 9$	36161

AMP INCORPORATED CUSTOMER SERVICE SYSTEMS		THIS DRAWING IS A CONTROLLED DOCUMENT.		DWN JR RUTH 17DEC09	STE TE Connectivity
FOR ADDITIONAL PRODUCT INFORMATION OR COPIES OF DRAWINGS AND TECHNICAL DOCUMENTS	PRODUCT INFORMATION CENTER 1-800-522-6752	MAX RECOMMENDED OPERATING TEMPERATURE: 105°C[221°F] MAX	DIMENSIONS: mm [INCHES]	CHK T MICHELUTTI 17DEC09	
FOR APPLICATION TOOLING INFORMATION	TOOLING ASSISTANCE CENTER 1-800-722-1111	VOLTAGE RATING: 300 VOLT MAX	TOLERANCES UNLESS OTHERWISE SPECIFIED: 0 PLC ± - 1 PLC ± - 2 PLC ± - 3 PLC ± 0.20[.008] 4 PLC ± - ANGLES ± -	APVD T MICHELUTTI 17DEC09	NAME TERMINAL, RING TONGUE, PIDG WIRE SIZE: 12-10 AWG
FOR ORDER ENTRY	1-800-526-5142	CIRCULAR MIL AREA: 2.62-6.64mm[5,180-13,100] STRANDED OR SOLID	MATERIAL -	FINISH -	SIZE A2
				APPLICATION SPEC -	DRAWING NO 00779
				WEIGHT -	SCALE 5:1
				CUSTOMER DRAWING	SHEET 1 of 1
					REV AA2