

THIS DRAWING IS UNPUBLISHED.	RELEASED FOR PUBLICATION	N/A, N/A .
(C) COPYRIGHT N/A BY TYCO ELECTRONICS CORPORATION.	ALL RIGHTS RESERVED.	

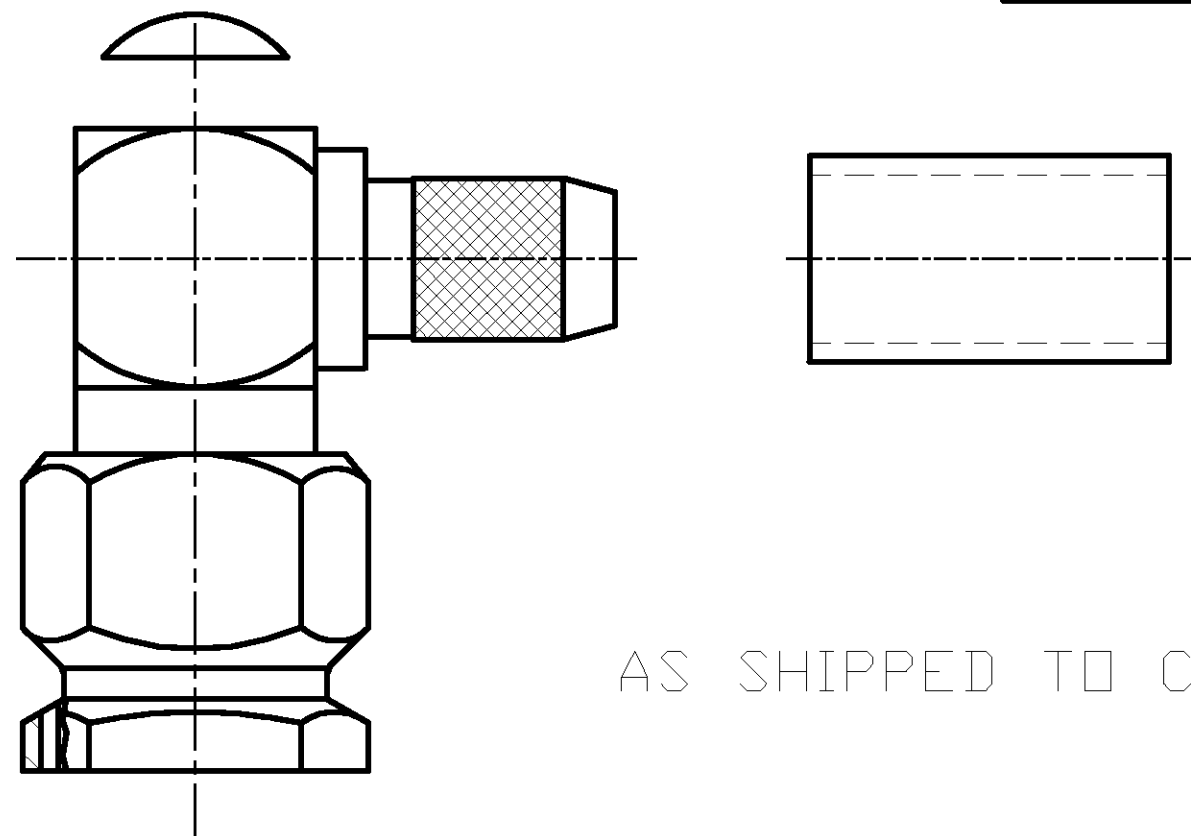
LOC	DIST	REVISIONS					
DF	XO	P	LTR	DESCRIPTION	DATE	DWN	APVD
			0	RELEASED	9-02	JMK	JL

COMPONENT	MATERIAL	FINISH
HOUSING CAP COUPLING NUT	STAINLESS STEEL PER ASTM-A-484 OR ASTM-A-582 TYPE 303	PASSIVATED PER ASTM-A-380 —
— DIELECTRIC —	PTFE FLUORCARBON PER ASTM-D-1457 —	— — —
— CENTER CONTACT —	BRASS PER ASTM-B-16 HALF HARD —	GOLD PLATED PER ASTM-B-488 —
— — —	— — —	— — —
— GASKET —	SILICONE RUBBER PER ZZ-R-765 —	— — —
— FERRULE —	COPPER OR BRASS ALLOY, ROCKWELL F65 MAX	GOLD PLATED PER ASTM-B-488 —
— RETAINING RING —	BERYLLIUM COPPER PER ASTM-B-194 ALLOY C17200, CONDITION H	— — —
— — —	— — —	— — —

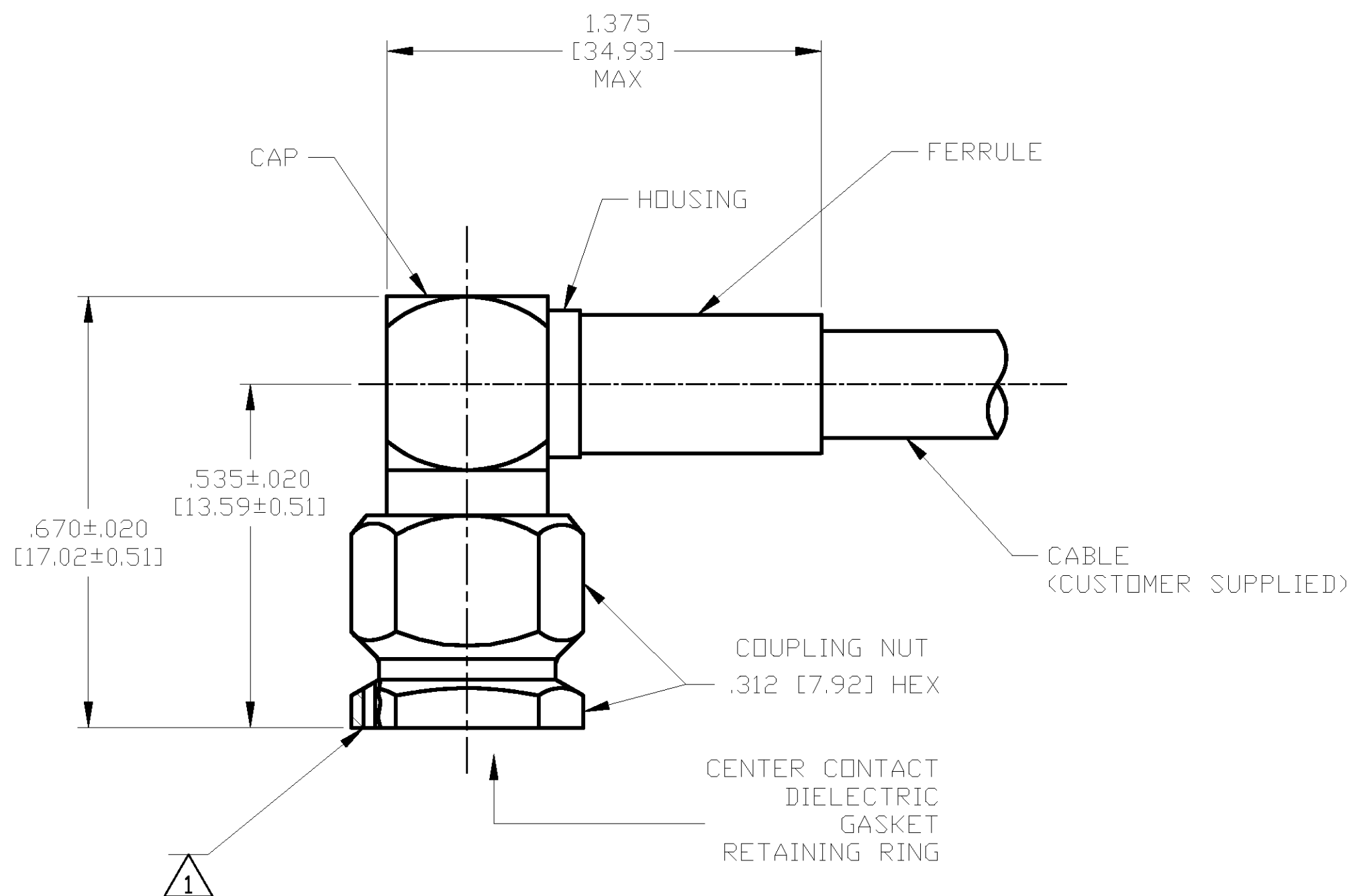
ENVIRONMENTAL
TEMPERATURE RATING: -65°C TO +165°C
VIBRATION: MIL-STD-202, METHOD 204, CONDITION D
SHOCK: MIL-STD-202, METHOD 213, CONDITION 1
MOISTURE RESISTANCE: MIL-STD-202, METHOD 106
CORROSION: MIL-STD-202, METHOD 101, CONDITION B. 5% SALT SPRAY
THERMAL SHOCK: MIL-STD-202, METHOD 107, CONDITION B EXCEPT HIGH TEMP 85°C

MECHANICAL		
INTERFACE DIMENSIONS:	MIL-STD-348A FIG.	310.1
RECOMMENDED MATING TORQUE:	7-10 IN-LBS	
FORCE TO ENGAGE & DISENGAGE (IN-LBS MAX:)	2.0	
WEIGHT (GRAMS):	TBD	
MATING CHARACTERISTICS:	INSERTION (MAX LBS)	N/A
	WITHDRAWAL (MIN OZ):	N/A
CABLE RETENTION:	AXIAL FORCE (LBS)	45 MIN
	TORQUE (IN-OZ):	N/A
CENTER CONTACT CAPTIVATION:	AXIAL (LBS):	6.0
	RADIAL (IN-OZ):	N/A

ELECTRICAL	
NORMAL IMPEDANCE (OHMS):	50
FREQUENCY RANGE (GHz):	DC TO 12.4
VOLT RATING @ SEA LEVEL (VRMS MAX):	335
VSWR:	1.15+.02f(GHz)
INSERTION LOSS: (dB MAX):	.06 $\sqrt{f(\text{GHz})}$
RF LEAKAGE (dB MIN):	-60 @ 2-3 GHz
CORONA 70,000 FT (VRMS MIN):	250
DIELECTRIC WITHSTANDING VOLTAGE (VRMS MIN) AT SEA LEVEL:	1000
I.R. (MEGOHMS MIN):	5,000
RF HIGH POTENTIAL AT SEA LEVEL (VRMS MIN @ 5 MHz):	670
CONTACT RESISTANCE (MILLIOHMS MAX):	
	CENTER CONTACT: 4.0
	OUTER CONTACT: 2.0
	CABLE TO HOUSING: 0.5




AS SHIPPED TO CUSTOMER





ASSEMBLED VIEW

1 ϕ . 018 [0. 46] LOCKWIRE HOLE, 3 PLACES EQUALLY SPACED.

DESIGNED TO USE RG-142/U OR EQUIVALENT	
CABLE ENTRY DIAMETER MIN	
HOUSING:	.121 [3.07]
CONTACT SLOT:	.041 [1.04]
—	—
—	—
FERRULE:	.216 [5.48]

THIS DRAWING IS A CONTROLLED DOCUMENT.		DWN J. KAISER	9/24/02
		CHK J. LIPPERT	10-18-02
		APD J. LIPPERT	10-18-02
DIMENSIONS:		TOLERANCES UNLESS OTHERWISE SPECIFIED:	
INCHES [mm]			
	0 PLC	±	-
	1 PLC	±	-
	2 PLC	±	-
	3 PLC	±	.005 [0.13]
	4 PLC	±	-
	ANGLES	±	-
MATERIAL	FINISH	PRODUCT SPEC	
SEE TABLE	SEE TABLE	—	
		APPLICATION SPEC	
		408-4846	
		WEIGHT	TBD
		CUSTOMER DRAWING	

		Tyco Electronics Corporation Harrisburg, PA 17105	
NAME			
SMA RIGHT ANGLE CABLE PLUG—CRIMP ATTACHMENT (M39012/56—3028) CAT C			
SIZE	CAGE CODE	DRAWING NO	RESTRICTED TO
A2	00779	 1052176	—
SCALE		5:1	SHEET 1 OF 1 REV 0

Mouser Electronics

Authorized Distributor

Click to View Pricing, Inventory, Delivery & Lifecycle Information:

[TE Connectivity:](#)

[2037-8028-92](#)