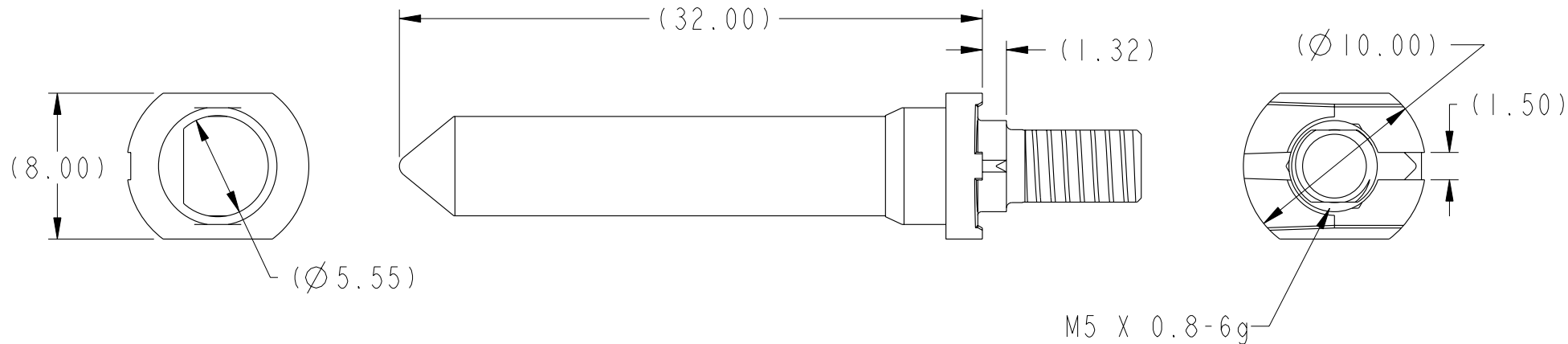
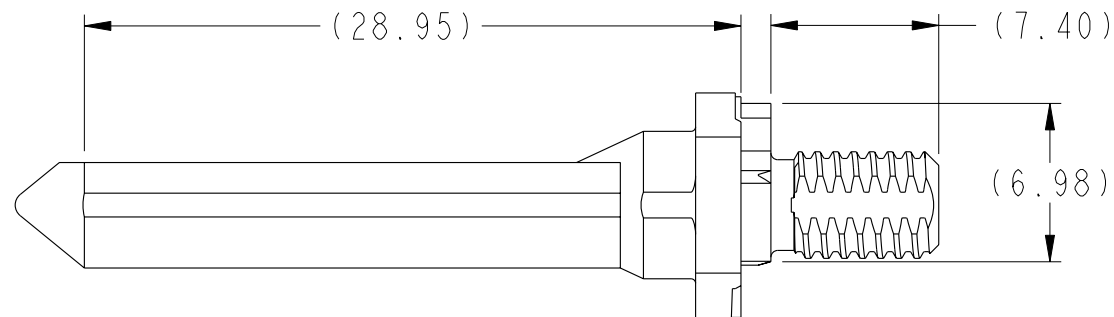


PRODUCT NUMBER

10084590-10ILF

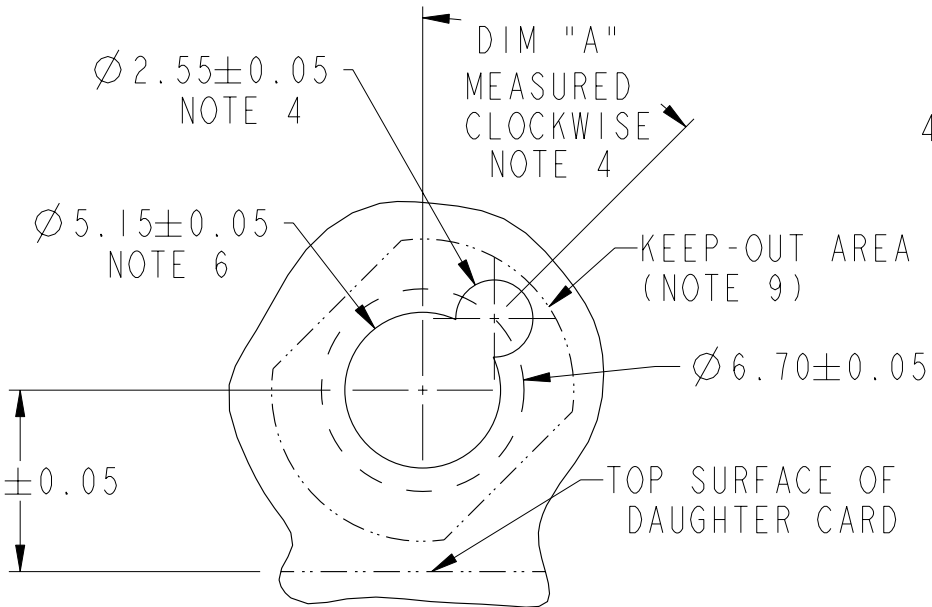


rev	ecn no	dr	date
A	S08-0174	CH	2008-06-02
B	S08-0187	CH	2008-06-13
-	-	-	-
-	-	-	-
-	-	-	-
-	-	-	-

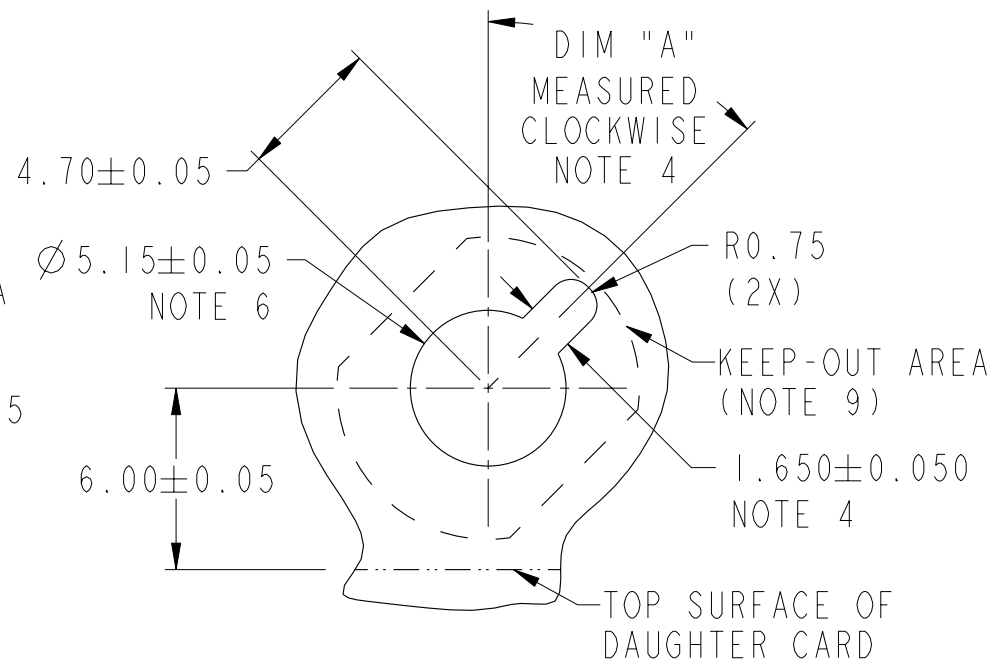
www.fciconnect.com			surface 3.200 ASME Y14.5	tolerance std ASME Y14.5	projection MM
TOLERANCES UNLESS OTHERWISE SPECIFIED			ANGULAR	LINEAR	size A4
Dr C. H. TAN 2008-06-02			0° ±2°	0.X ±0.3	Scale 3:1
Eng C. H. TAN 2008-06-02				0.XX ±0.10	
Chr C. H. TAN 2008-06-13				0.XXX ±0.050	ECN
Appr JOEY NG 2008-06-13			Product family AirMax Accessories		Spec ref -
FCI			title 10.8mm GUIDE PIN, EXT. THREAD		Rev. B
catalog no -			CUSTOMER		sheet 1 of 3



Copyright FCI.



RECOMMENDED PCB LAYOUT(DRILLING)
NOTES 4, 5 & 6
SCALE 4:1



RECOMMENDED PCB LAYOUT(MILLING)
NOTE 4, 5 & 6
SCALE 4:1

10.8 MM RECEPTACLE
GUIDE MODULE
NOTE 4

DIM "A"

10084589-1X1LF

0°



title 10.8mm GUIDE PIN,
EXT. THREAD
catalog no -

dwg no 10084590

Rev. B

CUSTOMER sheet 2 of 3

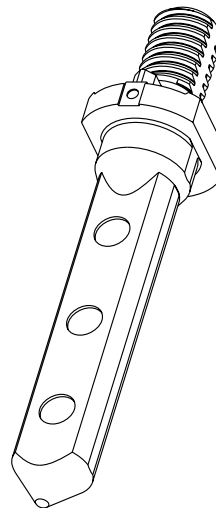
PDM: Rev:B

STATUS:Released

4Printed: Dec 01, 2010



Copyright FCI.



1. MATERIAL: ZINC ALLOY
2. FINISH: TRIVALENT CHROMATE IRIDESCENT
3. APPLICATION SPECIFICATION: GS-20-045
- ④. KEY HOLE ORIENTATION (DIM "A") WILL BE DEFINED BY THE MATING RECEPTACLE GUIDE MODULE PART NUMBER - SEE TABLE, SHEET 2
- ⑤. REFER TO CUSTOMER DRAWING 10035911 FOR INFORMATION REGARDING PCB LAYOUT OF POWER AND GUIDE MODULES RELATIVE TO SIGNAL MODULES
- ⑥. THRU HOLE PLATING AND ANNULAR RINGS MUST BE ADDED IN APPLICATIONS THAT USE THE ESD GROUNDING OPTION. FINISHED HOLE SIZE IS THE SAME REGARDLESS OF PLATED BARREL OR NOT.
7. THIS PRODUCT MEETS EUROPEAN UNION DIRECTIVES AND OTHER COUNTRY REGULATIONS AS DESCRIBED IN GS-22-008.
8. PACKAGING MEETS GS-14-920 LEAD FREE LABELING SPECIFICATION.
- ⑨. KEEP OUT ZONE MATCH PROFILE OF SEATED GUIDE PIN, SEE SHEET 1 FOR REFERENCE DIMENSIONS OF GUIDE PIN OUTLINE.

	title	10.8mm GUIDE PIN, EXT. THREAD	dwg no	10084590	Rev.	B
	catalog no	-	CUSTOMER	sheet 3 of 3		

Mouser Electronics

Authorized Distributor

Click to View Pricing, Inventory, Delivery & Lifecycle Information:

[FCI / Amphenol:](#)

[10084590-101LF](#)