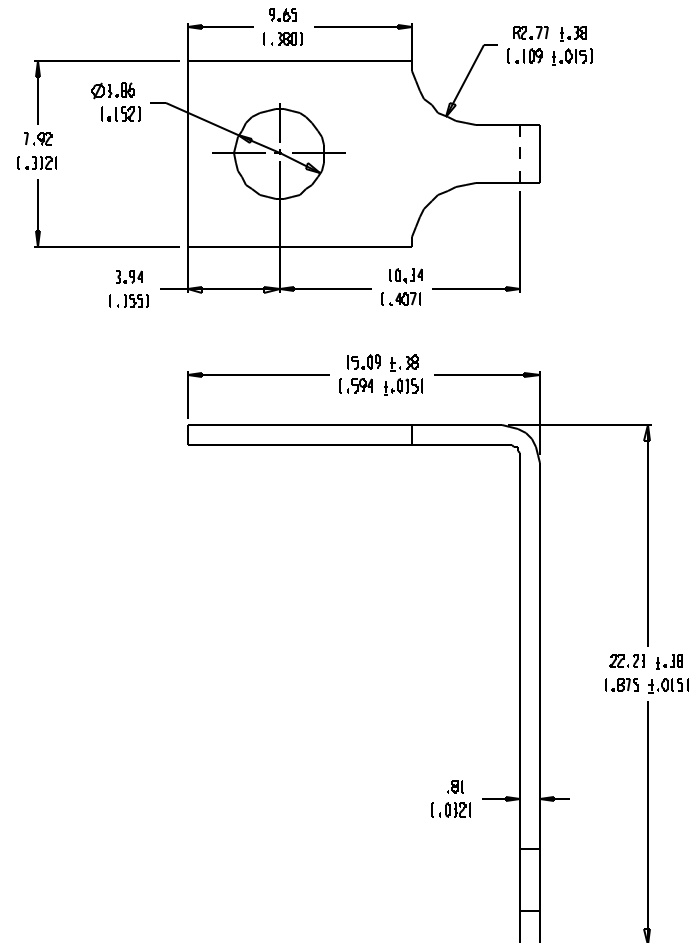


SD-38002-016



NOTES:

1. MATERIAL: SEE TABLE
2. FINISHES: SEE TABLE
3. PRODUCT SPECIFICATION: NOT REQUIRED
4. PACKAGING: NOT REQUIRED
5. MATES WITH: NONE
6. USED WITH: 1800 & 1900 SERIES TERMINAL STRIPS.

ITEM	QTY.	DESCRIPTION	MATERIAL NO.	MATERIAL	FINISH
1	1	TERMINAL	38002-0257	BRASS	TIN

RELEASED ON
EC NO. EDO 11412
DRWN: WH 11/25/03
CHK: APPR:

DESCRIPTION
REV

MAJOR
QUALITY
SYMBOLS
ORIGINAL
SPC
S

GENERAL TOLERANCES:
(UNLESS SPECIFIED)

	MIN	INCH
4 PLACES	±.0015	±.0015
3 PLACES	±.038	±.005
2 PLACES	±.13	±.01
1 PLACE	±.3	

ANGULAR: ±2°

DRAFT WHERE APPLICABLE MUST
REMAIN WITHIN DIMENSIONSSCALE
5:1DESIGN UNITS
☐ MM ☒ INCHDRAWN BY & DATE
W. HOWARD 11/25/03

CHECKED BY & DATE

APPROVED BY & DATE

CAD FILE NAME
1804-0401THIS DRAWING CONTAINS INFORMATION THAT IS PROPRIETARY TO MOLEX
INCORPORATED AND SHOULD NOT BE USED WITHOUT WRITTEN PERMISSION.THIRD ANGLE
PROJECTIONTITLE:
TERMINAL, SOLDER Y
(CAT #183)

MOLEX INCORPORATED

MATERIAL NO. SEE TABLE

DRAWING NO. SD-38002-016

SHEET NO. 1 OF 1

SIZE
B

Mouser Electronics

Authorized Distributor

Click to View Pricing, Inventory, Delivery & Lifecycle Information:

Molex:

38002-0257