

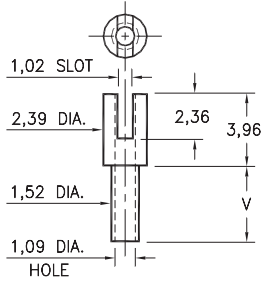
MALE PCB PINS

SOLDER TERMINALS SLOTTED

2303

2303-X-01-XX-00-00-07-0

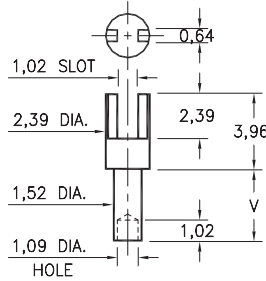
Swage mount in 1,63 hole



2323

2323-X-01-XX-00-00-07-0

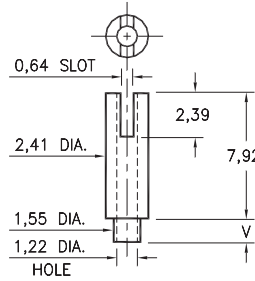
Swage mount in 1,63 hole



2322

2322-X-01-XX-00-00-07-0

Swage mount in 1,63 hole

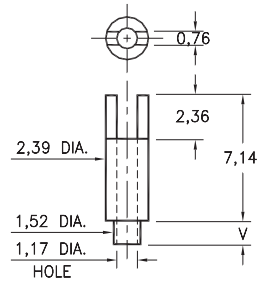


Basic Part Number	Board Thickness	Length V
23XX-1	0,79	1,35
23XX-2	1,57	2,13
23XX-3	2,39	2,92
23XX-4	3,18	3,73

2320

2320-X-01-XX-00-00-07-0

Swage mount in 1,63 hole

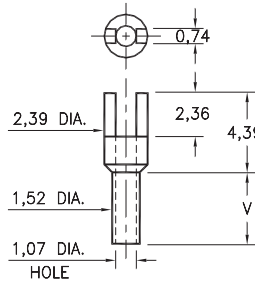


Basic Part Number	Board Thickness	Length V
2320-1	0,79	1,35
2320-2	1,57	2,13
2320-3	2,39	2,92

2328

2328-X-01-XX-00-00-07-0

Swage mount in 1,63 hole

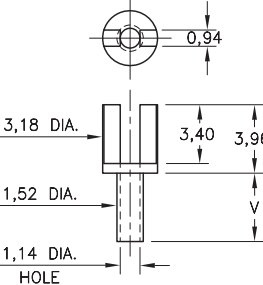


Basic Part Number	Board Thickness	Length V
2328-1	0,79	1,57
2328-2	1,57	2,39
2328-3	2,39	3,18
2328-4	3,18	3,96

2520

2520-X-01-XX-00-00-07-0

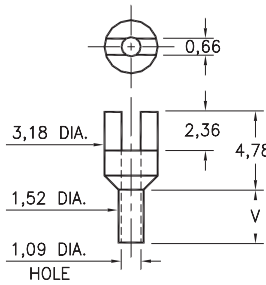
Swage mount in 1,63 hole



2517

2517-X-01-XX-00-00-07-0

Swage mount in 1,63 hole



Basic Part Number	Board Thickness	Length V
25XX-1	0,79	1,57
25XX-2	1,57	2,39
25XX-3	2,39	3,18
25XX-4	3,18	3,96

SPECIFICATIONS:

Pin Material: Brass Alloy 360, 1/2 Hard
(Swage pins are annealed)

Dimensions: Millimeters

Tolerances On: Lengths: $\pm 0,13$
Diameters: $\pm 0,051$
Angles: $\pm 2^\circ$



ORDER CODE: XXXX - X - 01 - XX - 00 - 00 - 07 - 0

BASIC PART #

SPECIFY PIN FINISH:

- 01 5,08 μ m TIN/LEAD OVER NICKEL
- ◆ 80 5,08 μ m TIN OVER NICKEL (RoHS)
- ◆ 44 7,62 μ m SILVER OVER COPPER (RoHS)
- 50 7,62 μ m ELECTRO-SOLDER
(60/40 SnPb)



Mouser Electronics

Authorized Distributor

Click to View Pricing, Inventory, Delivery & Lifecycle Information:

[Mill-Max:](#)

[2320-3-01-80-00-00-07-0](#) [2320-3-01-44-00-00-07-0](#)