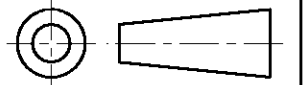


DO NOT SCALE  
DIMENSIONS IN mm

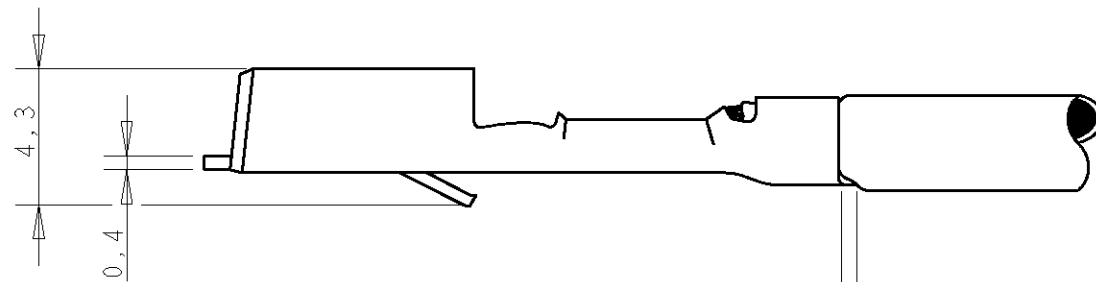
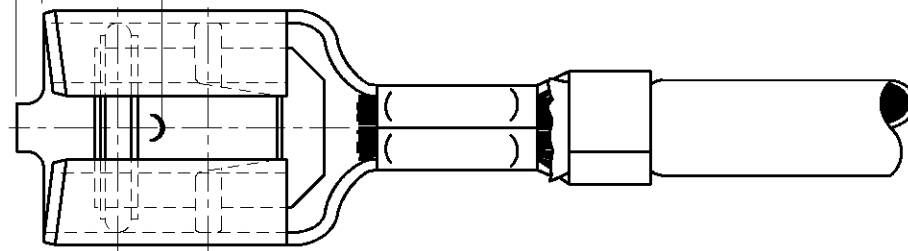
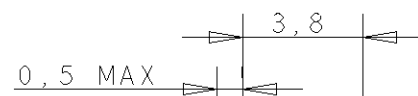
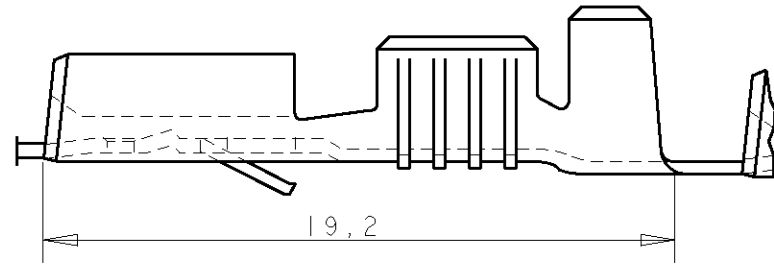
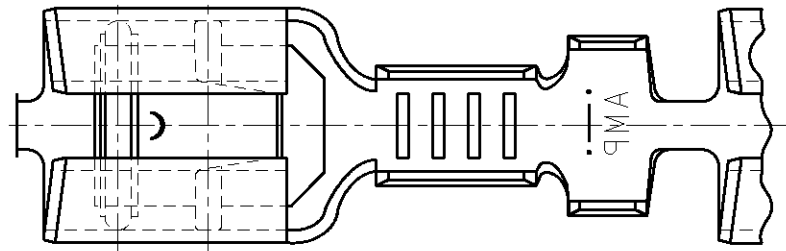
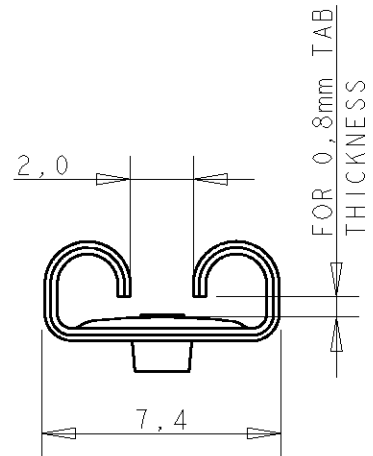
METRIC

THIRD ANGLE  
PROJECTION



NOTES

- 1. FOR USE ON MINIATURE APPLICATORS ( LEFT-RIGHT FEED ) AND STANDARD APPLICATORS ( RIGHT-LEFT FEED ).
- 2. REELED WITH PAPER AND PAPER COVER.
- 3. OBSOLETE PARTS: OBSOLETE CIS STREAMLINING PER D.RENAUD/D.SINISI



0,5 MAX

WIRE RANGE :  
>1,0-2,5 mm<sup>2</sup>  
INSULATION RANGE :  
2,1-3,1 DIA.

GENERAL TOLERANCES ±0.3

NOTES	FINISH	MATERIAL	PARTNUMBER
OBSOLETE 3	PRE-TINPLATED	PH.BRONZE	<del>6-160917-8</del>
	PRE-TINPLATED	BRASS	<del>6-160917-7</del>
	TINPLATED	PH.BRONZE	160917-4
	UNPLATED	PH.BRONZE	160917-3
	TINPLATED	BRASS	160917-2
	UNPLATED	BRASS	160917-1

CUSTOMER DRAWING FOR REFERENCE ONLY WILL NOT BE UPDATED			
THIS DRAWING IS UNPUBLISHED RELEASED FOR PUBLICATION JULY, 19 87			
<b>STE</b> TE Connectivity			
NAME .250 SRS FASTIN-ON RECEPTACLE.			
<b>E3</b>	REVISED PER ECO-11-005139	RK	HMR 28MAR11
LTR.	REVISION RECORD	DR.	CHK. DATE
DR.: R.V.LOKVEN.	CHK.: A.BIJNEN.	APP.: L.V.SOEST.	DWG.No.
DATE: 31-07-87	DATE: 10-08-87	DATE: 25-08-887	160917
			REV.LTR. SHEET <b>E3</b> 1 OF 1

# Mouser Electronics

Authorized Distributor

Click to View Pricing, Inventory, Delivery & Lifecycle Information:

[TE Connectivity:](#)

[160917-3](#)