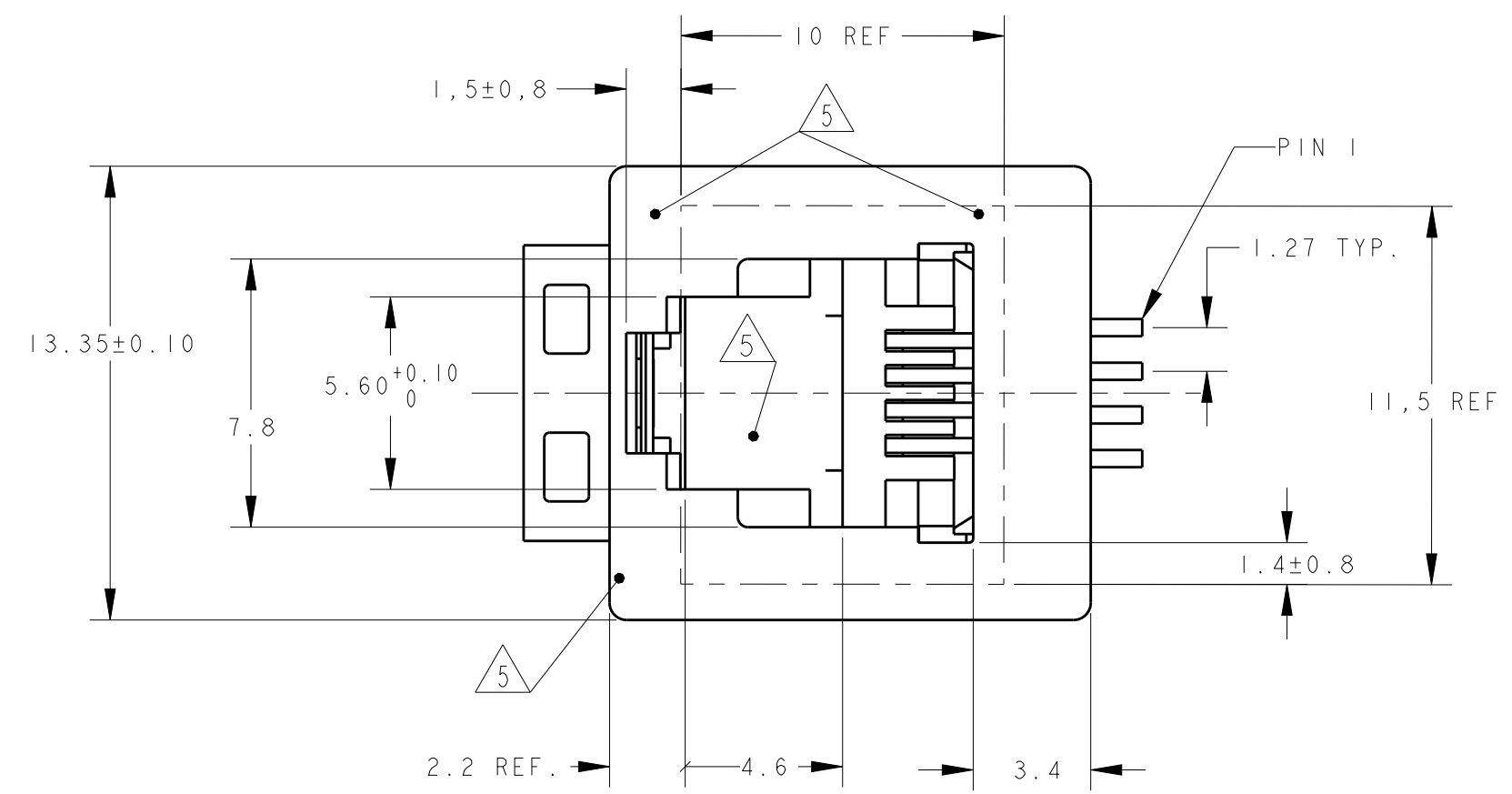
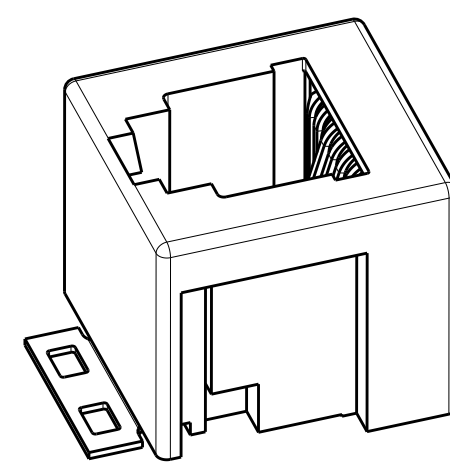
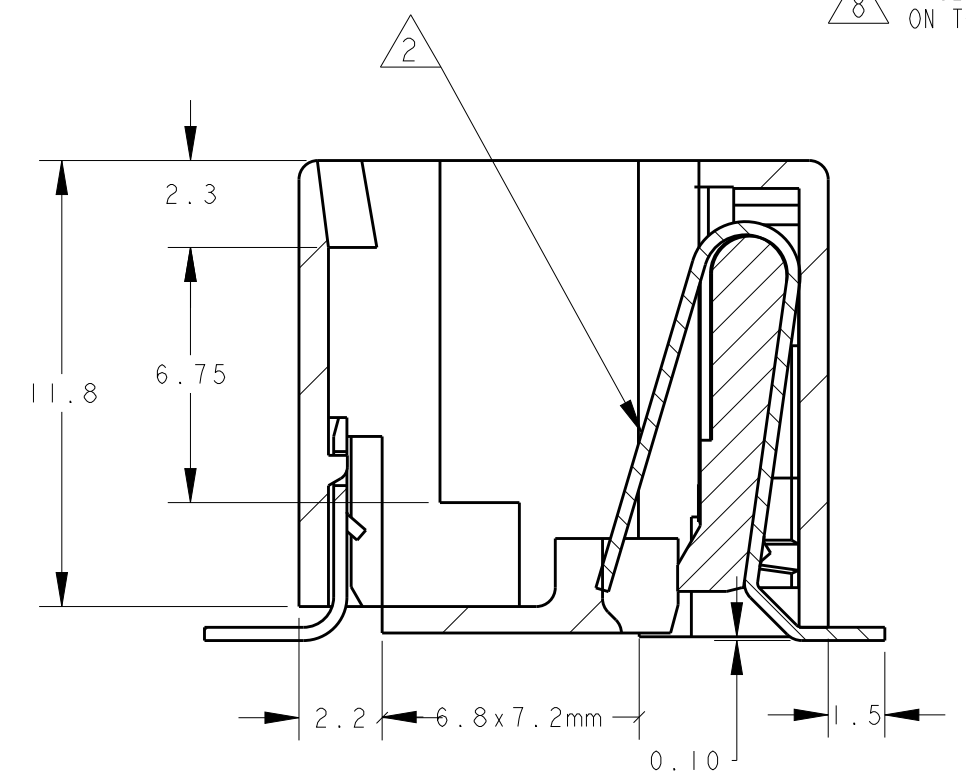
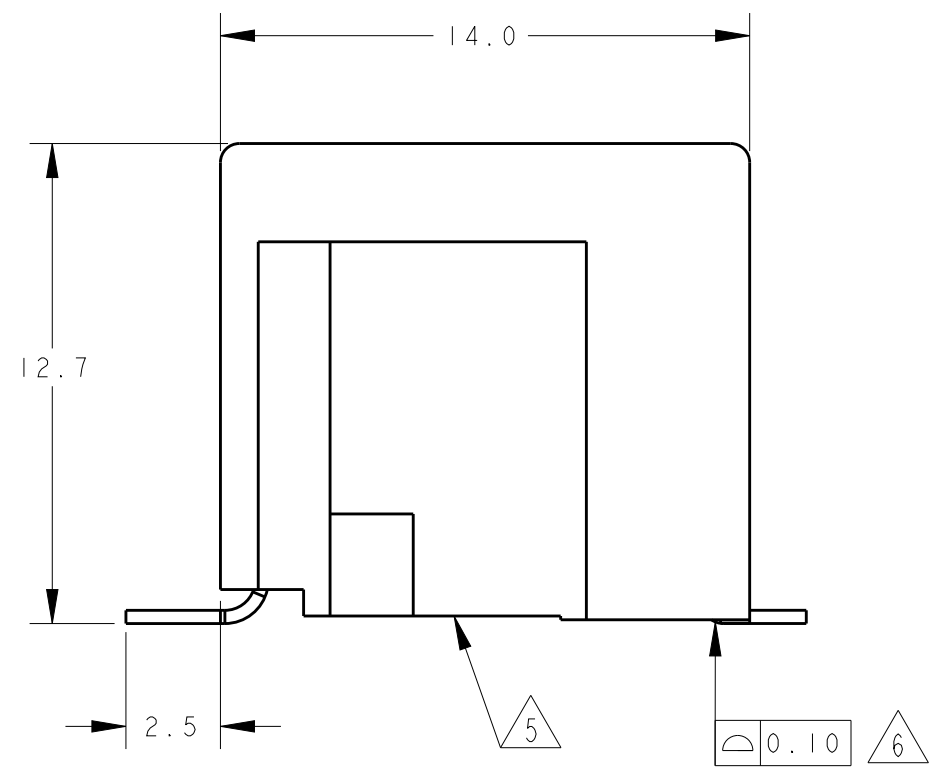
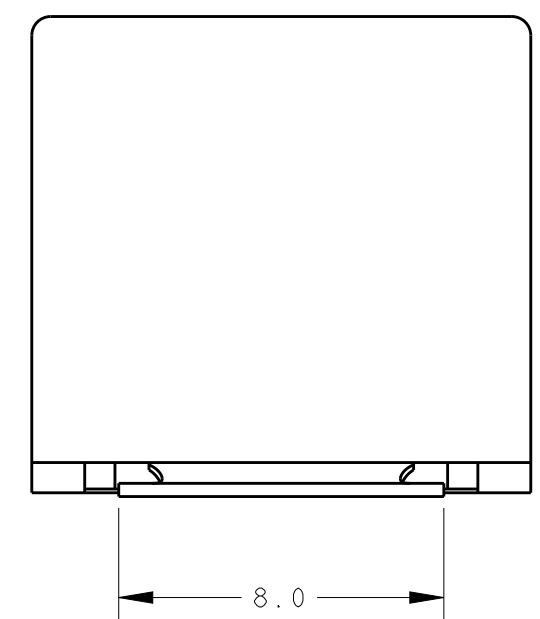


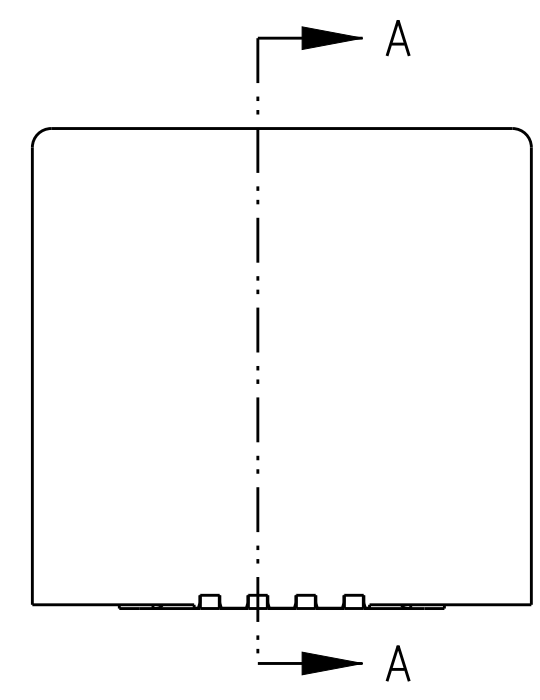
D



C

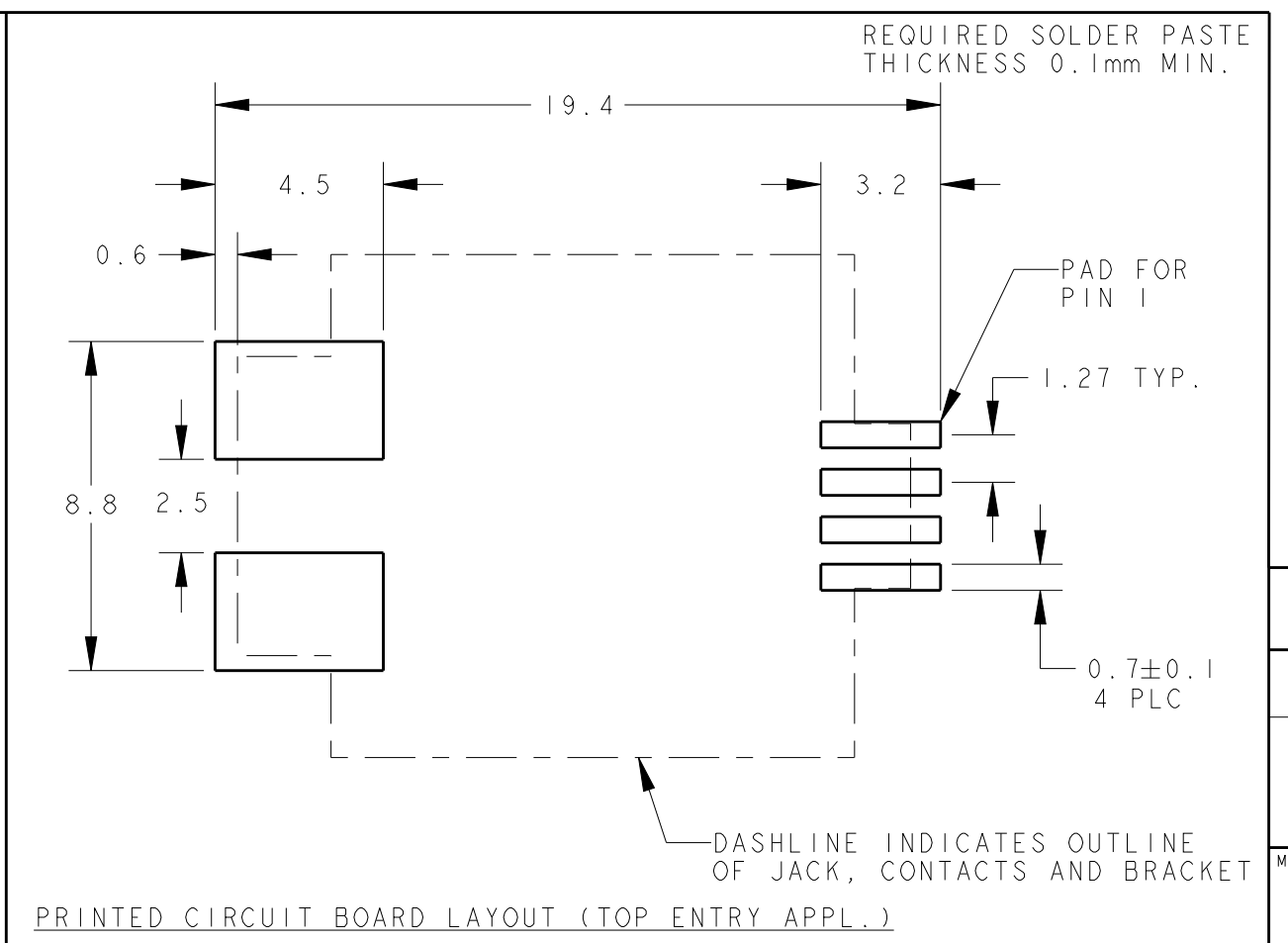
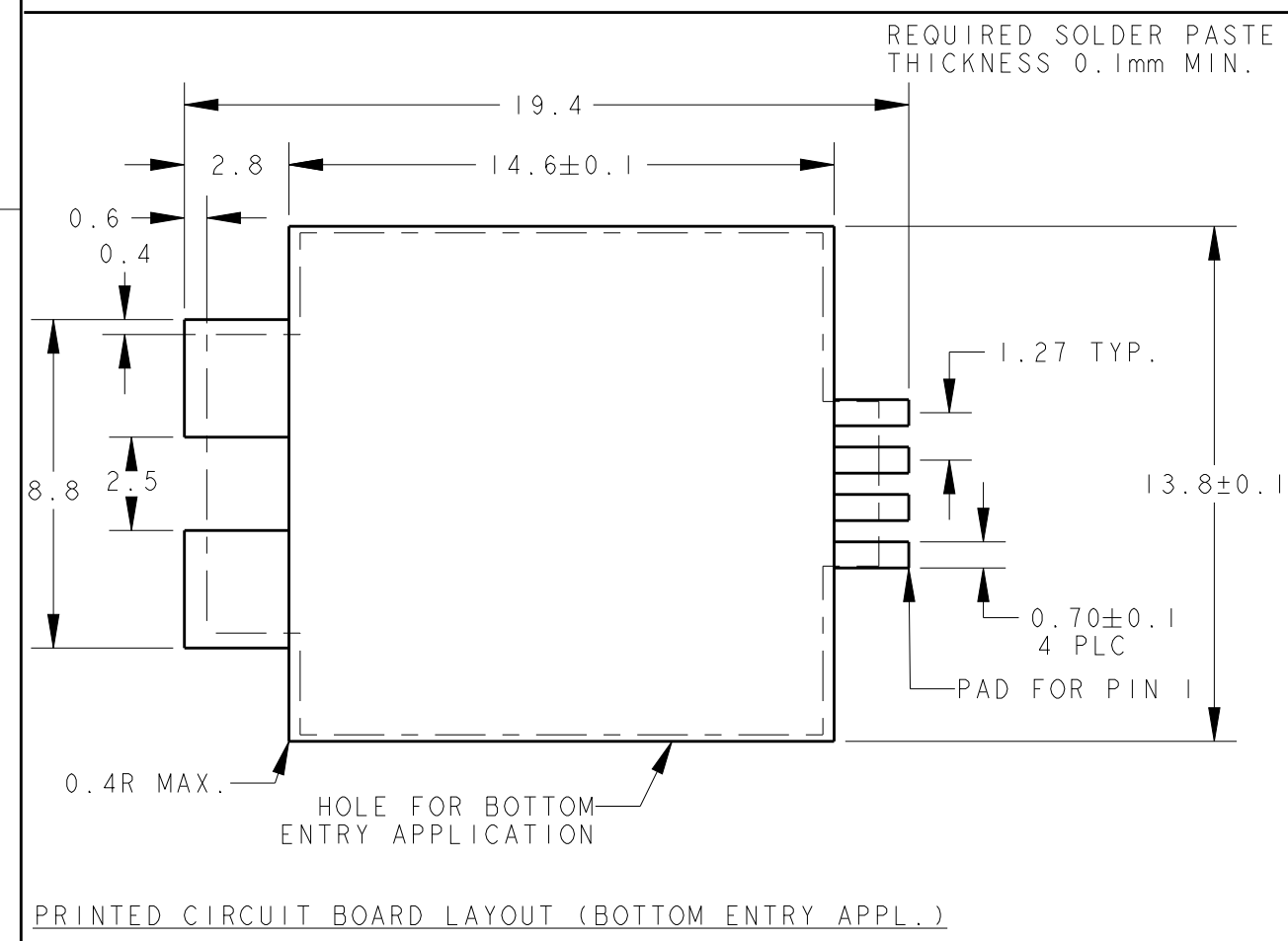


SECTION A - A



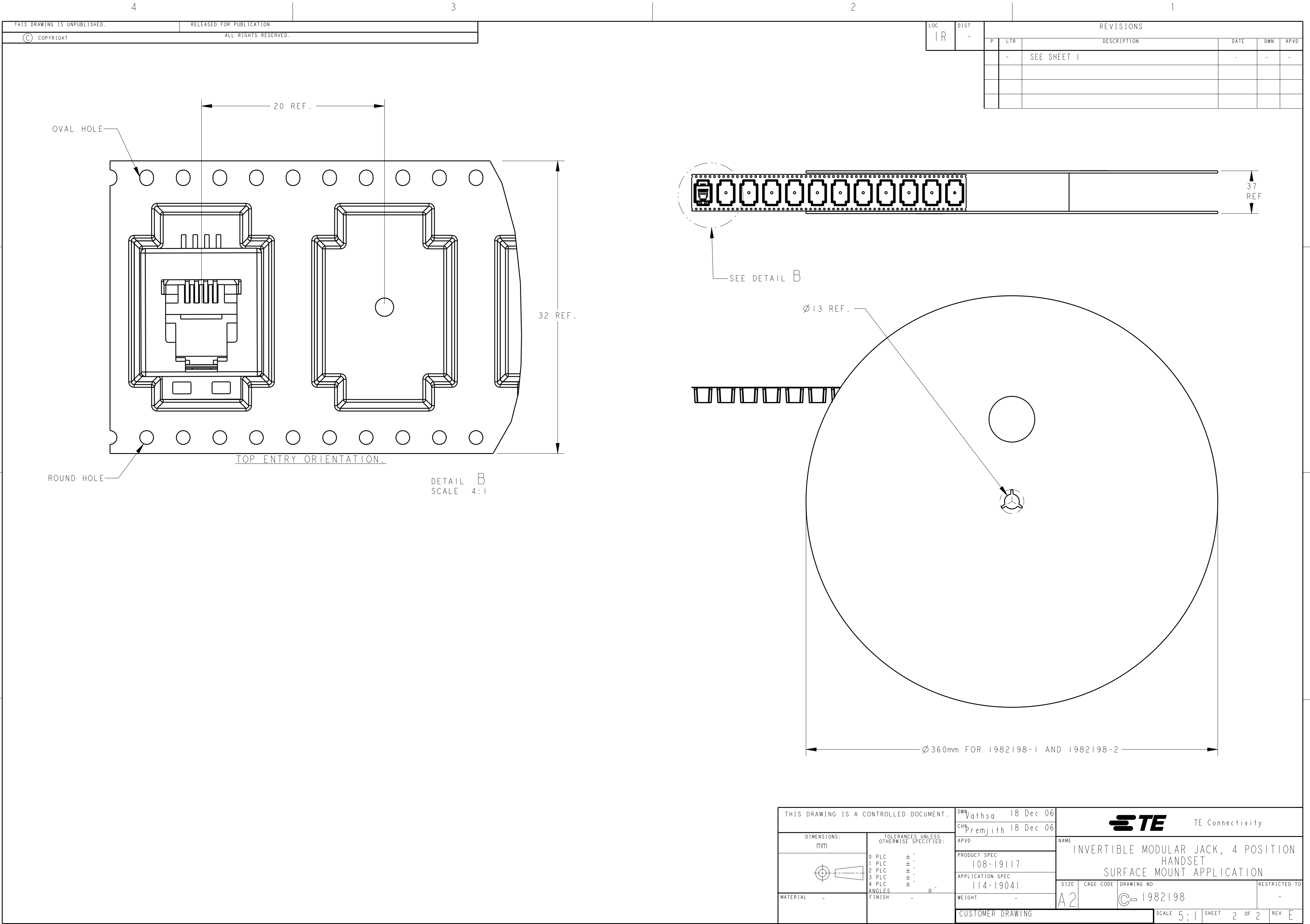
B

A



4 POS./4 CONT.	300 PCS ON Ø360 mm OD REEL. TOP ENTRY ORIENTATION PER DETAIL B	1982198-2
4 POS./4 CONT.	300 PCS ON Ø360 mm OD REEL. TOP ENTRY ORIENTATION PER DETAIL B	1982198-1
REMARKS	PACKAGING	PART NUMBER

THIS DRAWING IS A CONTROLLED DOCUMENT.		DWN VATHSA 18Dec2006	TE Connectivity	
CHK PREMJI 18Dec2006		APVD		
DIMENSIONS: mm		PRODUCT SPEC 108-19117	NAME INVERTIBLE MODULAR JACK, 4 POSITION HANDSET SURFACE MOUNT APPLICATION	
TOLERANCES UNLESS OTHERWISE SPECIFIED:		APPLICATION SPEC 114-19041		
0 PLC ±		WEIGHT -	SIZE A2	
1 PLC ±		CUSTOMER DRAWING		
2 PLC ±		SCALE 5:1	SHEET 1 OF 2	
3 PLC ±		REV E		
4 PLC ±				
ANGLES ±				
FINISH -				
MATERIAL -				
SEE NOTE 3				
SEE NOTE 2				



THIS DRAWING IS A CONTROLLED DOCUMENT.		DWN Vathsa 18 Dec 06	TE Connectivity			
		CHK Premjith 18 Dec 06				
DIMENSIONS: mm		APVD	NAME			
		PRODUCT SPEC	INVERTIBLE MODULAR JACK, 4 POSITION			
		108-19117	HANDSET			
		APPLICATION SPEC	SURFACE MOUNT APPLICATION			
TOLERANCES UNLESS OTHERWISE SPECIFIED:		114-19041	SIZE	CAGE CODE	DRAWING NO	RESTRICTED TO
0 PLC ± -		WEIGHT -	A2		C-1982198	-
1 PLC ± -		CUSTOMER DRAWING				
2 PLC ± -		SCALE 5:1				
3 PLC ± -		SHEET 2 OF 2				
4 PLC ± -		REV E				
ANGLES ± -						
FINISH -						

Mouser Electronics

Authorized Distributor

Click to View Pricing, Inventory, Delivery & Lifecycle Information:

[TE Connectivity:](#)

[1982198-1](#)