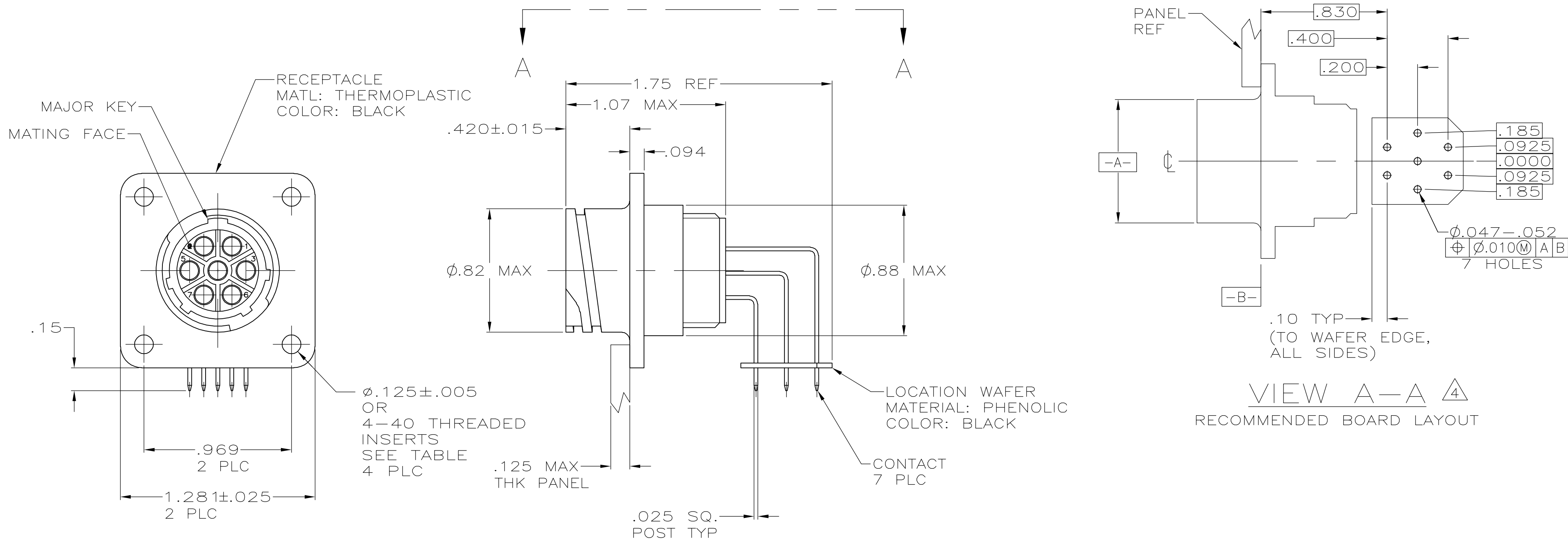
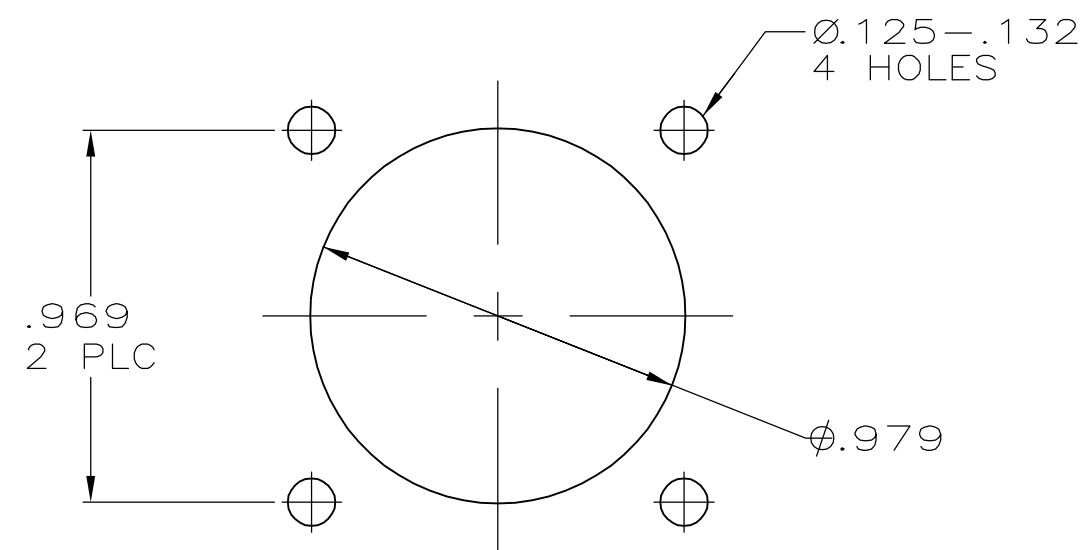


THIS DRAWING IS UNPUBLISHED.		RELEASED FOR PUBLICATION		REVISIONS			
© COPYRIGHT	-	BY TYCO ELECTRONICS CORPORATION.	ALL RIGHTS RESERVED.	LOC	DIST	P	LTR
				FT	0	C	
				DESCRIPTION		DATE	DWN
				REVISED PER ECO-06-10652		5/8/06	SS
							APVD
							SH


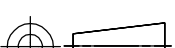


- CONTACT CAVITIES IDENTIFIED BY CHARACTERS ON FRONT AND REAR FACES OF CONNECTOR.
- #4 FASTENER RECOMMENDED FOR MOUNTING.
- CONTACT BODY: .000030 MIN GOLD FOR A LENGTH OF .200 MIN FROM MATING END, WITH REMAINDER TO BE GOLD FLASH, BOTH OVER .000050 MIN NICKEL.
CONTACT POST: .000100 MIN TIN-LEAD OVER .000100 MIN COPPER.
- PC BOARD HOLE PATTERN IS DEFINED RELATIVE TO CONNECTOR C.L. AND PANEL MOUNTING FACE INDICATED.
- CONTACT BODY: .000030 MIN GOLD FOR A LENGTH OF .200 MIN FROM MATING END, WITH REMAINDER TO BE GOLD FLASH, BOTH OVER .000050 MIN NICKEL.
CONTACT POST: .000100 MIN TIN OVER .000100 MIN COPPER.



RECOMMENDED
PANEL CUTOUT

NO		1-796500-1
YES		796500-2
NO		796500-1
THREADED INSERT	CONTACT FINISH	PART NUMBER

THIS DRAWING IS A CONTROLLED DOCUMENT.			DWN HAMNER	4-7-00	 Tyco Electronics Corporation Harrisburg, Pa 17105-3608			
			CHK M.CHACKO	4-10-00				
DIMENSIONS: INCHES		TOLERANCES, UNLESS OTHERWISE SPECIFIED:		APVD M.CHACKO	4-10-00	NAME		
		0 PLC ± -		PRODUCT SPEC		RECEPTACLE ASSY, POSTED, RT ANGLE, RVS SEX, SIZE 13-7, SERIES 1, CPC -		
		1 PLC ± -		-				
		2 PLC ± .03						
		3 PLC ± .010		APPLICATION SPEC				
		4 PLC ± -		-		SIZE		
		ANGLES ± -				CAGE CODE		
MATERIAL		FINISH		WEIGHT		DRAWING NO		
-		-		-		A2 00779 C-796500		
CUSTOMER DRAWING					SCALE		SHEET	
					2:1		1 OF 1	
							REV C	

Mouser Electronics

Authorized Distributor

Click to View Pricing, Inventory, Delivery & Lifecycle Information:

[TE Connectivity:](#)

[1-796500-1](#)