





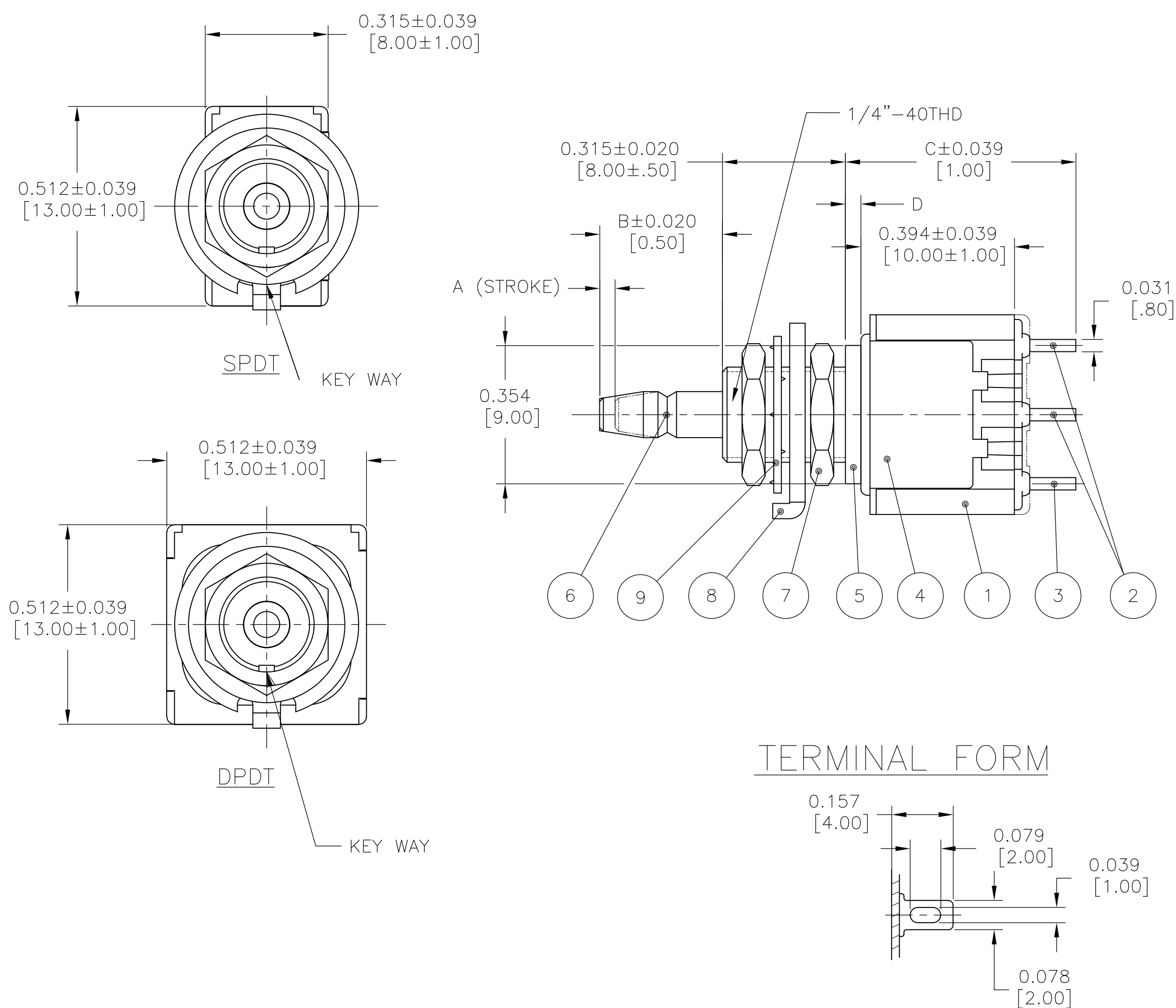


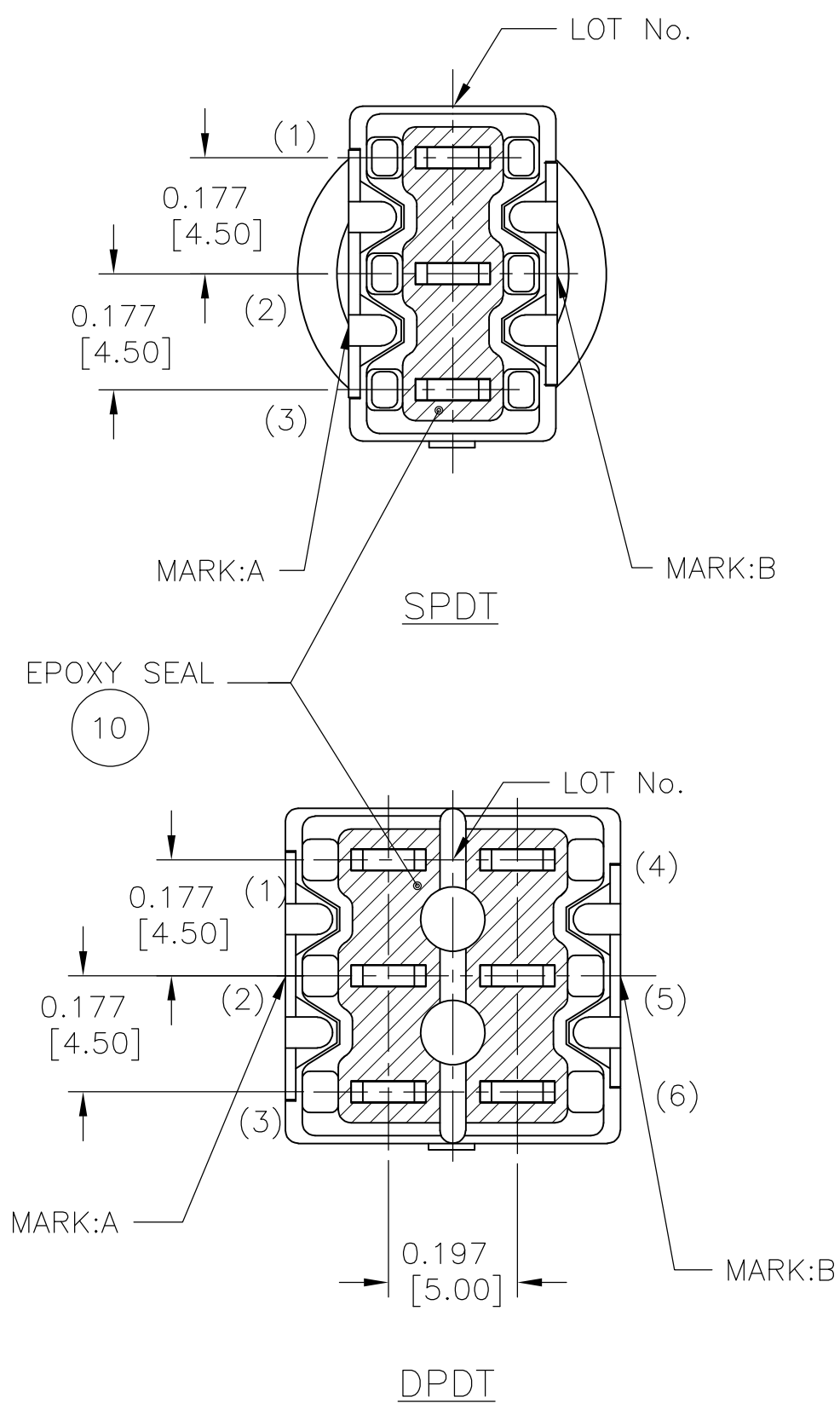
LOC —	DIST —	REVISIONS					
		P	LTR	DESCRIPTION	DATE	DWN	APVD
			B2	REVISED PER ECO-14-000329	09JAN2014	NK	RH

		DIMENSION				OPERATING FORCE	PART NUMBER	TYPE	MARK			
		A	B	C	D				MARK:A	MARK:B		
MOMENTARY	ON-ON	.098 [2.5]	.331 [8.4]	.650 [16.5]	.098 [2.5]		1977739-1 MPS103D	SPDT	MPS103D ALCO	AC 3A 125V ON ON C	3-2	3-1
	ON-(ON)	.039 [1]	.315 [8]	.591 [15]	.039 [1]		1977739-2 MPS103F		MPS103F ALCO	AC 3A 125V NO NC C		(3)-(1)
	ON-ON	.098 [2.5]	.331 [8.4]	.650 [16.5]	.098 [2.5]		1977739-3 MPS203N	DPDT	MPS203N ALCO	AC 3A 125V ON ON C	3-2 6-5	3-1 6-4
MOMENTARY	ON-(ON)	.039 [1]	.315 [8]	.591 [15]	.039 [1]		1977739-4 MPS203R		MPS203R ALCO	AC 3A 125V NO NC C		(3)-(1) (6)-(4)

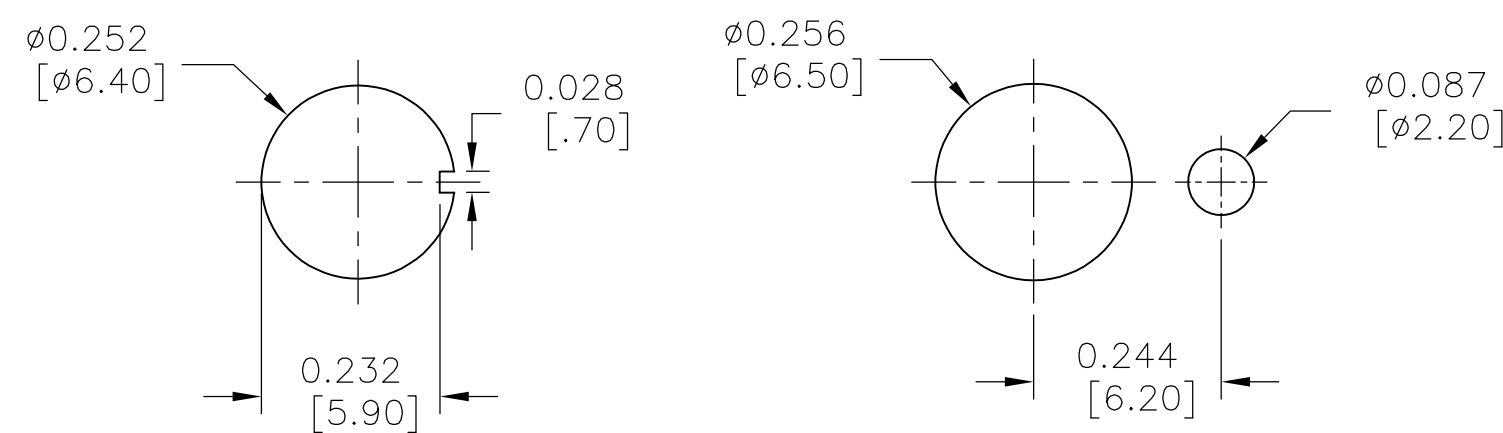
NOTE: TERMINALS 4,5,6 ARE FOUND ONLY ON DP VERSIONS (-3, -4)



## TERMINAL FORM

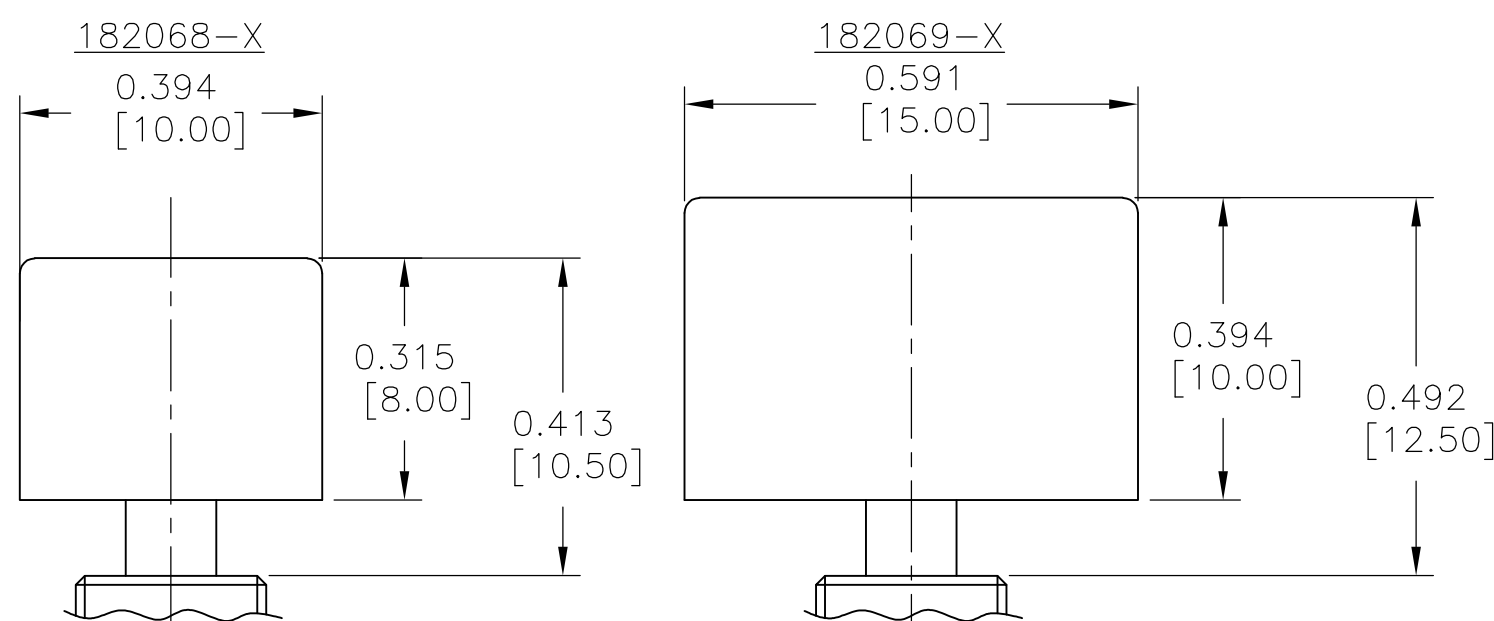


## PANEL CUT-OUTS



WITHOUT LOCKING RING  
MAXIMUM PANEL THICKNESS:  
.118 [3mm]

WITH STANDARD LOCKING RING  
MAXIMUM PANEL THICKNESS:  
.079 [2mm]




BUTTON CAP

SOLD SEPARATELY

SEE DRAWINGS 1825068 (ø.394 [10 MM]) &  
1825069 (ø.591 [15 MM])  
FOR COLOR CHOICES

A/R	A/R	BLUE	—	EPOXY	10
1	1	ZINC PLATE	CARBON TOOL STEEL	TOOTH WASHER	9
1	1	ZINC PLATE	COLD ROLLED STEEL	LOCATING RING	8
2	2	NICKEL PLATE	BRASS	HEX NUT	7
1	1	NICKEL PLATE	BRASS	PLUNGER	6
1	1	NICKEL PLATE	BRASS	MOUNTING SLEEVE	5
1	1	—	STAINLESS STEEL	FRAME	4
2	1	SILVER PLATE	BRASS	COMMON TERMINAL	3
4	2	SILVER PLATE	SILVER + BRASS	FIXED CONTACT	2
1	1	(BLUE)	EPOXY RESIN	CASE	1
2	1	FINISH (COLOR)	MATERIALS	PARTS	NO
POLES	POLE QTY				

THIS DRAWING IS A CONTROLLED DOCUMENT.						OWN RAGHAVENDRA		28JAN11	
						CHK EPPLEY NAZ		28JAN11	
						APPD EPPLEY NAZ		28JAN11	
DIMENSIONS: INCHES [mm]		TOLERANCES UNLESS OTHERWISE SPECIFIED:		NAME		MPS SERIES PUSHBUTTON			
		Ø PLC ± . - PLC ± . - 3 PLC ± .010 [.25] ANGLES ± . -		PRODUCT SPEC -		MPS103 (SPDT) & MPS203 (DPDT)			
MATERIAL -		FINISH -		APPLICATION SPEC -		WIRE LUG TERMINATION			
				WEIGHT -		SIZE A1		CAGE CODE 100779	DRAWING NO. C-1977739
CUSTOMER DRAWING						RESTRICTED TO -			
						SCALE 4:1		SHEET 1 of 1	REV B3

# Mouser Electronics

Authorized Distributor

Click to View Pricing, Inventory, Delivery & Lifecycle Information:

[TE Connectivity:](#)

[MPS-203R](#)