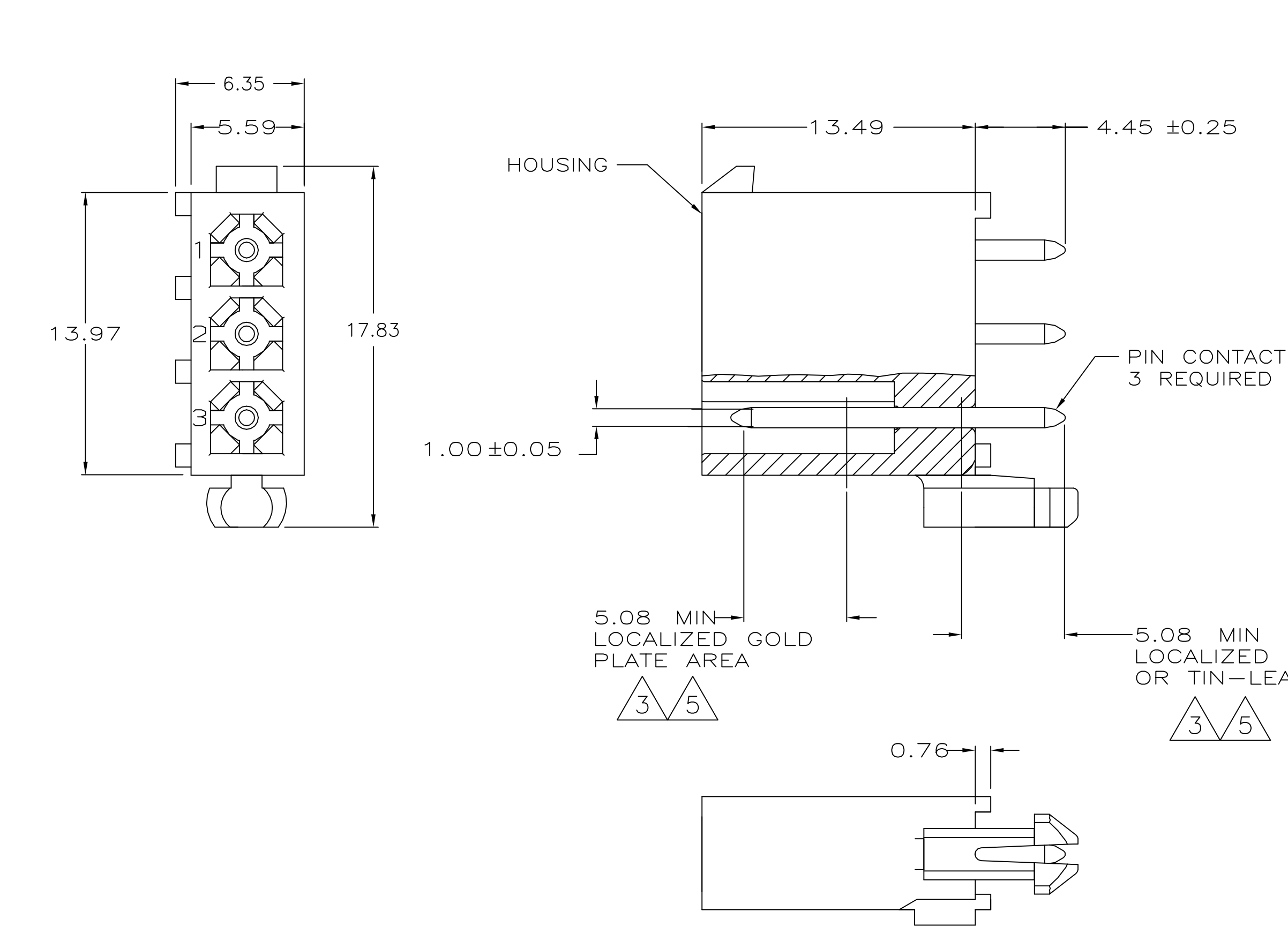
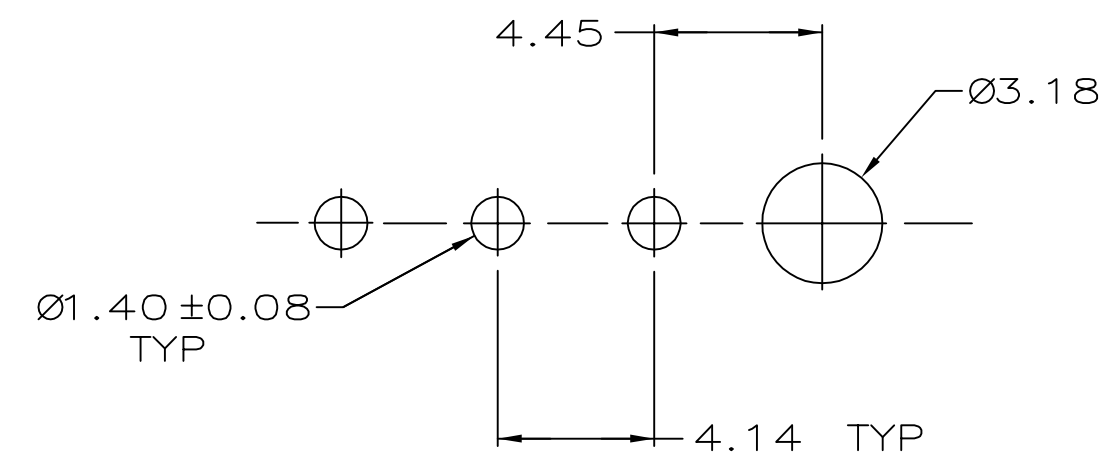


LOC	DIST	REVISIONS				
CM	0	P	LTR	DESCRIPTION	DATE	APVD
		M1		REVISED PER ECR-16-010553	07AUG2017	SG





- 1
- PINS TO COMPLY WITH AMP SOLDERABILITY SPEC. 109-11-3.
- 2
- 0.00381 MIN MATTE TIN LEAD PLATE OVER 0.00127 MIN NICKEL.
- 3
- 0.00076 MIN GOLD PLATE IN THE LOCALIZED PLATE AREA, 0.00381 MATTE TIN LEAD IN THE LOCALIZED PLATE AREA, BOTH OVER 0.00127 MIN NICKEL.
- 4
- 0.00381 MIN MATTE TIN PLATE OVER 0.00127 MIN NICKEL.
- 5
- 0.00076 MIN GOLD PLATE IN THE LOCALIZED PLATE AREA, 0.00381 MATTE TIN IN THE LOCALIZED PLATE AREA, BOTH OVER 0.00127 MIN NICKEL.



RECOMMENDED LAYOUT FOR 1.57 THICK BOARD  
TOLERANCES NON-ACCUMULATIVE

BRASS, TIN	4	NYLON, UL94V-0	BLACK	5-770170-0
BRASS, GOLD	5	NYLON, UL94V-0	WHITE	1-770170-1
BRASS, TIN	4	NYLON, UL94V-0	WHITE	1-770170-0
BRASS, GOLD	3	NYLON, UL94V-0	WHITE	770170-2
BRASS, TIN-LEAD	2	NYLON, UL94V-0	WHITE	770170-1
MATERIAL	FINISH	MATERIAL	COLOR	PART NO.

THIS DRAWING IS A CONTROLLED DOCUMENT.		DWN S CARPENTER CHK R JONES APVD R JONES PRODUCT SPEC APPLICATION SPEC — WEIGHT —		08JUN05 28JUL2003 28JUL2003		 TE Connectivity		
DIMENSIONS: mm		TOLERANCES UNLESS OTHERWISE SPECIFIED:		NAME  HEADER ASSEMBLY, 3 CKT, MINI UNIVERSAL MATE—N—LOK  —				
		0 PLC ± — 1 PLC ± — 2 PLC ± 0.13 3 PLC ± — 4 PLC ± — ANGLES ± —						
MATERIAL  —		FINISH  —		SIZE A2	CAGE CODE 00779	DRAWING NO C=770170	RESTRICTED TO  —	
CUSTOMER DRAWING						SCALE 1:1	SHEET 1 of 1	REV M1

# Mouser Electronics

Authorized Distributor

Click to View Pricing, Inventory, Delivery & Lifecycle Information:

[TE Connectivity:](#)

[5-770170-0](#)