



preci-dip

PCB CONNECTORS

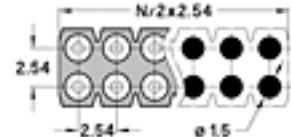
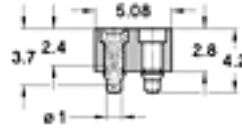
SERIES
414

414-PP-2NN-41-134101

Double row

2.54 mm, Surface mount perp. floating pin, Mating pin Ø 0.47 mm

Socket connectors SMD perpendicular mount



TECHNICAL SPECS.:

Insulator	Black glass filled polyester PCT-GF30-FR
Flammability	UL 94V-O
Sleeve	Brass CuZn36Pb3 (C36000)
Contact	Clip (4 finger): Beryllium copper (C17200)
Mating pin Ø	0.40 to 0.56 mm
Insertion force	2 N typ.
Withdrawal force	1 N typ. (polished steel gauge Ø 0.43 mm)
Mechanical life	Min. 500 cycles
Rated current	3 A
Contact resistance	Max. 10 m
Dielectric strength	Min. 1000 V RMS
Coplanarity SMD terminations	Max. 0.1 mm (measured on 25 mm long connectors)

ORDERING INFORMATION:

PP Plating code	Sleeve	Clip
87	Tin	Gold flash
83	Tin	Gold 0.75 µm

NN number of poles. Replace NN with the requested number of poles, e.g. 410-87-2NN-41-105101 for a double row version with 16 pins becomes 410-87-216-41-105101.

TECHNICAL ASSISTANCE

GENERAL SPECIFICATIONS:

The values listed below are general specs applying for PRECI-DIP socket and pin connectors. Please see individual catalog page for additional and product specific technical data.

Operating temperature range	-55 ... +125 °C
Climatic category (IEC)	55/125/21
Operating humidity range	annual mean 75 %
Max working voltage	100 VRMS/150 VDC (2.54 mm grid)

PRECI-DIP sockets are recognized by Underwriters Laboratories Inc. and listed under "Connectors for Use in Data, Signal, Control and Power Applications", File Nr. E174442

MECHANICAL CHARACTERISTICS:

Clip retention	Min. 40 N (no displacement under axial force applied)
Contact (sleeve / clip) retention	Min. 3.3 N acc. to MIL-DTL-83734, pt 4.6.4.2

ELECTRICAL CHARACTERISTICS:

Insulation resistance between any two adjacent contacts	Min. 10'000 M at 500 V AC
Capacitance between any two adjacent contacts	Max. 1 pF

Air and creepage distances between any two adjacent contacts :

SERIES	3xx/4xx/7xx	80x	83x	85x	86x
mm	0.7	0.85 / 0.7	0.5	0.4 / 0.5	0.5

ENVIRONMENTAL CHARACTERISTICS:

The sockets withstand the following environmental tests without mechanical and electrical defects:

- Dry heat steady state IEC 60512-11-9.11i / 60068-2-2.Bb: 125 °C, 16h
- Damp heat cyclic IEC 60512-11-12.11m / 60068-2-30.Db: 25/55 °C, 90 – 100 %rH, 1 cycle of 24 h
- Cold steady state IEC 60512-11-10.11j / 60068-2-1.A: -55 °C, 2 h
- Thermal shock IEC 60512-11-4.11d / 60068-2-14.Na: -55/125 °C, 5 cycles 30 min
- Sinusoidal vibrations IEC 60512-6-4.6d / 60068-2-6.Fc: 10 to 500 Hz, 10 g, 1 octave/min, 10 cycles for each axis
- Shock IEC 60512-6-3.6c / 60068-2-27.Ea: 50 g, 11 ms, 3 shocks in three axis

During the above two tests no contact interruption >50 ns does appear.

- Solderability J-STD-002A, Test A, 245°C, 5 s solder alloy SnAg3.8Cu0.7
- Resistance to soldering heat J-STD-0020C, 260°C, 20 s
- Moisture sensitivity J-STD-020C level 1
- Resistance to corrosion :
 - 1) Salt spray test IEC 60068-2-11.Ka: 48 h
 - 2) Sulfur dioxide (SO₂) test IEC 60068-2-42 Kc: 96 h at 25 ppm SO₂, 25 °C, 75 %rH
 - 3) Hydrogen sulfide (H₂S) test IEC 60068-2-43 Kd: 96 h at 12 ppm H₂S, 25 °C, 75 %rH

SOLDERLESS COMPLIANT PRESS-FIT CHARACTERISTICS:

PRESS-FIT CHARACTERISTICS MEASURED ACC. TO IEC 60352-5

- Press-in force: 90 N max. (at min. hole dia.) / 65 N typ.
- Push-out force: 30 N min. (at max. hole dia.) / 50 N typ.
- Push-out 3rd cycle: 20 N min. (at max. hole dia.)

PCB HOLE DIMENSIONS

- 2 mm grid: Finished hole \varnothing : $0.7 + 0.09/-0.06$ mm | Drilled hole \varnothing : 0.8 ± 0.02 mm
- 2.54 mm grid: Finished hole \varnothing : $1 + 0.09/-0.06$ mm | Drilled hole \varnothing : 1.15 ± 0.02 mm

PCB HOLE PLATING

- PCB surface finish: Hole plating
- Tin: 5-15 μm tin over min. 25 μm copper
- Copper: min. 25 μm copper
- Gold over nickel: 0.05-0.2 μm gold over 2.5-5 μm nickel over min. 25 μm copper

PACKAGING:

Standard connector packaging is card box.

SMD mount connectors available on request with Tape & Reel packaging acc. to EIA Standard 481.

Mouser Electronics

Authorized Distributor

Click to View Pricing, Inventory, Delivery & Lifecycle Information:

Preci-dip:

[414-87-214-41-134101](#) [414-83-250-41-134101](#) [414-87-204-41-134101](#) [414-83-262-41-134101](#) [414-83-260-41-134101](#) [414-83-258-41-134101](#) [414-83-256-41-134101](#) [414-83-254-41-134101](#) [414-83-252-41-134101](#) [414-83-244-41-134101](#) [414-83-272-41-134101](#) [414-87-226-41-134101](#) [414-83-268-41-134101](#) [414-83-266-41-134101](#) [414-83-264-41-134101](#) [414-87-218-41-134101](#) [414-87-216-41-134101](#) [414-87-212-41-134101](#) [414-87-206-41-134101](#) [414-83-206-41-134101](#) [414-83-204-41-134101](#) [414-83-270-41-134101](#) [414-87-222-41-134101](#) [414-87-220-41-134101](#) [414-83-218-41-134101](#) [414-83-216-41-134101](#) [414-83-214-41-134101](#) [414-83-212-41-134101](#) [414-83-210-41-134101](#) [414-83-230-41-134101](#) [414-83-228-41-134101](#) [414-83-226-41-134101](#) [414-83-246-41-134101](#) [414-83-222-41-134101](#) [414-83-248-41-134101](#) [414-83-242-41-134101](#) [414-83-240-41-134101](#) [414-83-238-41-134101](#) [414-83-236-41-134101](#) [414-83-234-41-134101](#) [414-83-232-41-134101](#) [414-87-232-41-134101](#) [414-87-230-41-134101](#) [414-87-254-41-134101](#) [414-87-224-41-134101](#) [414-83-220-41-134101](#) [414-87-228-41-134101](#) [414-87-244-41-134101](#) [414-87-242-41-134101](#) [414-87-240-41-134101](#) [414-87-238-41-134101](#) [414-87-236-41-134101](#) [414-87-234-41-134101](#) [414-87-260-41-134101](#) [414-87-258-41-134101](#) [414-87-256-41-134101](#) [414-87-252-41-134101](#) [414-87-248-41-134101](#) [414-87-272-41-134101](#) [414-87-270-41-134101](#) [414-87-268-41-134101](#) [414-87-264-41-134101](#) [414-87-262-41-134101](#) [414-87-250-41-134101](#)