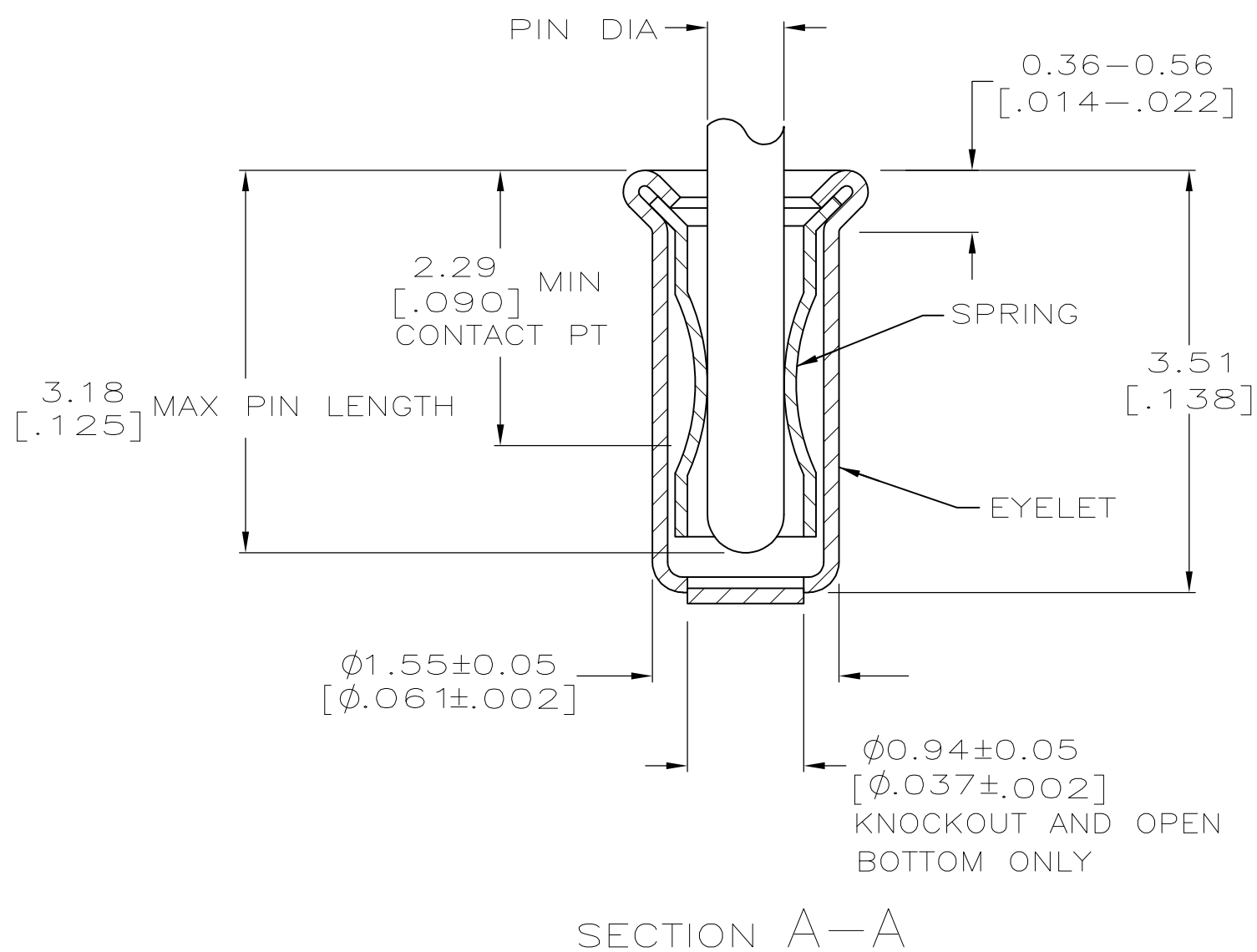
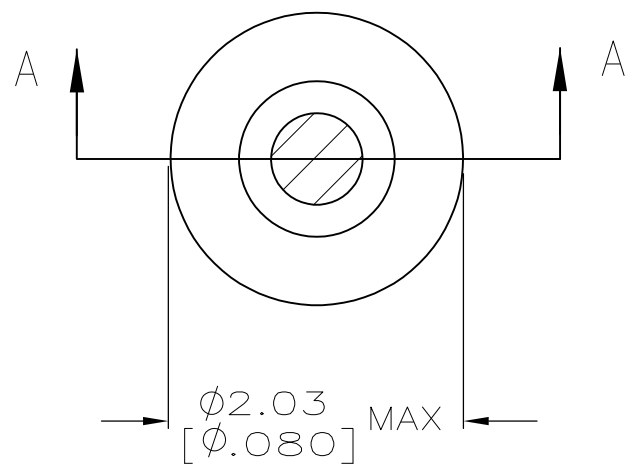


THIS DRAWING IS UNPUBLISHED. RELEASED FOR PUBLICATION  
 © COPYRIGHT - By - ALL RIGHTS RESERVED.

| LOC |     | DIST        |  | REVISIONS                 |         |        |  |
|-----|-----|-------------|--|---------------------------|---------|--------|--|
| P   | LTR | DESCRIPTION |  | DATE                      | DWN     | APVD   |  |
| GP  | 00  | P           |  | REVISED PER ECO-11-004835 | 07MAR11 | RK HMR |  |



- 1. TIN PLATE PER ASTM B 545 0.00254 [.000100] MIN THICK.
- 2. GOLD PLATE PER ASTM B 488 0.00076 [.000030] MIN THICK OVER NICKEL PLATE PER QQ-N-290 0.00028 [.000011] MIN THICK ON CONTACT AREA.
- 3. RECOMMENDED HOLE SIZE, PLATED OR UNPLATED:  
 MACHINE INSERTION:  $1.57^{+0.10}_{-0.08}$  [ $.062^{+0.004}_{-0.003}$ ]  
 HAND INSERTION:  $1.60^{+0.10}_{-0.00}$  [ $.063^{+0.004}_{-0.000}$ ]
- 4. APPLICATION TOOL PART NUMBER: MACHINE NO. 682127-4  
 INSERTION HEAD NO. 682039-3
- 5. TO INSURE PROPER SPRING TENSION DO NOT EXCEED A 0.05 [.002] DIFFERENCE IN PIN DIA WHEN CHANGING TO A SMALLER PIN.
- 6. BOTTOM PLUG KNOCKOUT TOOL PART NUMBER 69729 WITH TIP PART NUMBER 69728-1.
- 7. MATERIAL: BERYLLIUM COPPER PER ASTM B 194  
 EYELET: COPPER PER ASTM B 152
- 8. OBSOLETE PARTS: OBSOLETE CIS STREAMLINING PER D.RENAUD/D.SINISI

| 8 | OBSOLETE | OPEN        | 0.76-0.84 [.030-.033] | TIN 1  | GOLD 2 | 7-5331677-4 |
|---|----------|-------------|-----------------------|--------|--------|-------------|
|   |          | CLOSED      | 0.66-0.74 [.026-.029] |        |        |             |
|   |          | KNOCKOUT    | 0.76-0.84 [.030-.033] |        |        | 3-5331677-4 |
|   |          | OPEN        | 0.66-0.74 [.026-.029] |        |        | 3-5331677-2 |
|   |          | CLOSED      | 0.76-0.84 [.030-.033] |        |        | 2-5331677-4 |
|   |          |             | 0.76-0.84 [.030-.033] |        |        | 2-5331677-2 |
|   |          |             | 0.56-0.64 [.022-.025] |        |        | 1-5331677-8 |
|   |          |             | 0.76-0.84 [.030-.033] |        |        | 1-5331677-6 |
|   |          |             |                       |        |        | 1-5331677-3 |
|   |          | BOTTOM TYPE | RECOMMENDED PIN DIA 5 | EYELET | SPRING | PART NO     |
|   |          |             |                       | FINISH |        |             |

THIS DRAWING IS A CONTROLLED DOCUMENT.

|                         |  |                                   |                           |                             |  |
|-------------------------|--|-----------------------------------|---------------------------|-----------------------------|--|
| DIMENSIONS: mm [INCHES] | TOLERANCES UNLESS OTHERWISE SPECIFIED: | DWN: A. FERNANDEZ-DOCK5 22APR2005 | CHK: J. HAVENER 22APR2005 | APVD: J. HAVENER 22APR2005  | NAME: MINIATURE SPRING SOCKET ASSEMBLY |
| 0 PLC ± -               | 1 PLC ± -                              | PRODUCT SPEC: 108-14008           |                           | APPLICATION SPEC: 114-13152 | SIZE: A2                               |
| 2 PLC ± -               | 3 PLC ± 0.20 [.008]                    | WEIGHT: -                         |                           | CAGE CODE: 00779            | DRAWING NO: 5331677                    |
| 4 PLC ± -               | ANGLES ± -                             | MATERIAL: NOTE 7                  |                           | SCALE: 20:1                 | SHEET: 1 OF 1                          |
|                         | FINISH: SEE TABLE                      | CUSTOMER DRAWING                  |                           | REV: P                      |  |

TE Connectivity

# Mouser Electronics

Authorized Distributor

Click to View Pricing, Inventory, Delivery & Lifecycle Information:

[TE Connectivity:](#)

[1-5331677-8](#)