

4

3

2

1

THIS DRAWING IS UNPUBLISHED.

RELEASED FOR PUBLICATION

© COPYRIGHT

ALL RIGHTS RESERVED.

LOC

DIST


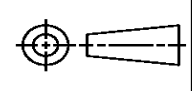
REVISIONS

P	LTR	DESCRIPTION	DATE	DWN	APVD
	C1	ECR-14-001601	04FEB2014	GK	HMR

REPLACED BY OCEAN STYLE APPLICATOR PART
NUMBER 2151756-1

FOR REPLACEMENT PARTS FOR APPLICATOR 1385010
REFER TO ADDITIONAL PAGE(S). SPARE PARTS KIT (IF LISTED)
WILL REMAIN AVAILABLE.

THE REPLACEMENT OCEAN STYLE APPLICATOR HAS THE
SAME TERMINATOR/PRESS INTERFACE AS APPLICATOR
1385010

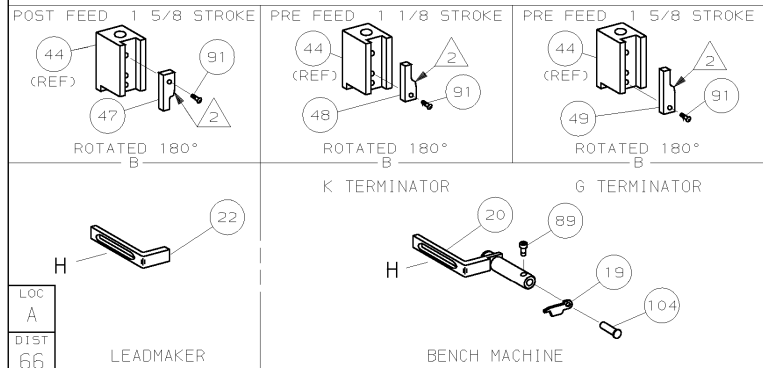
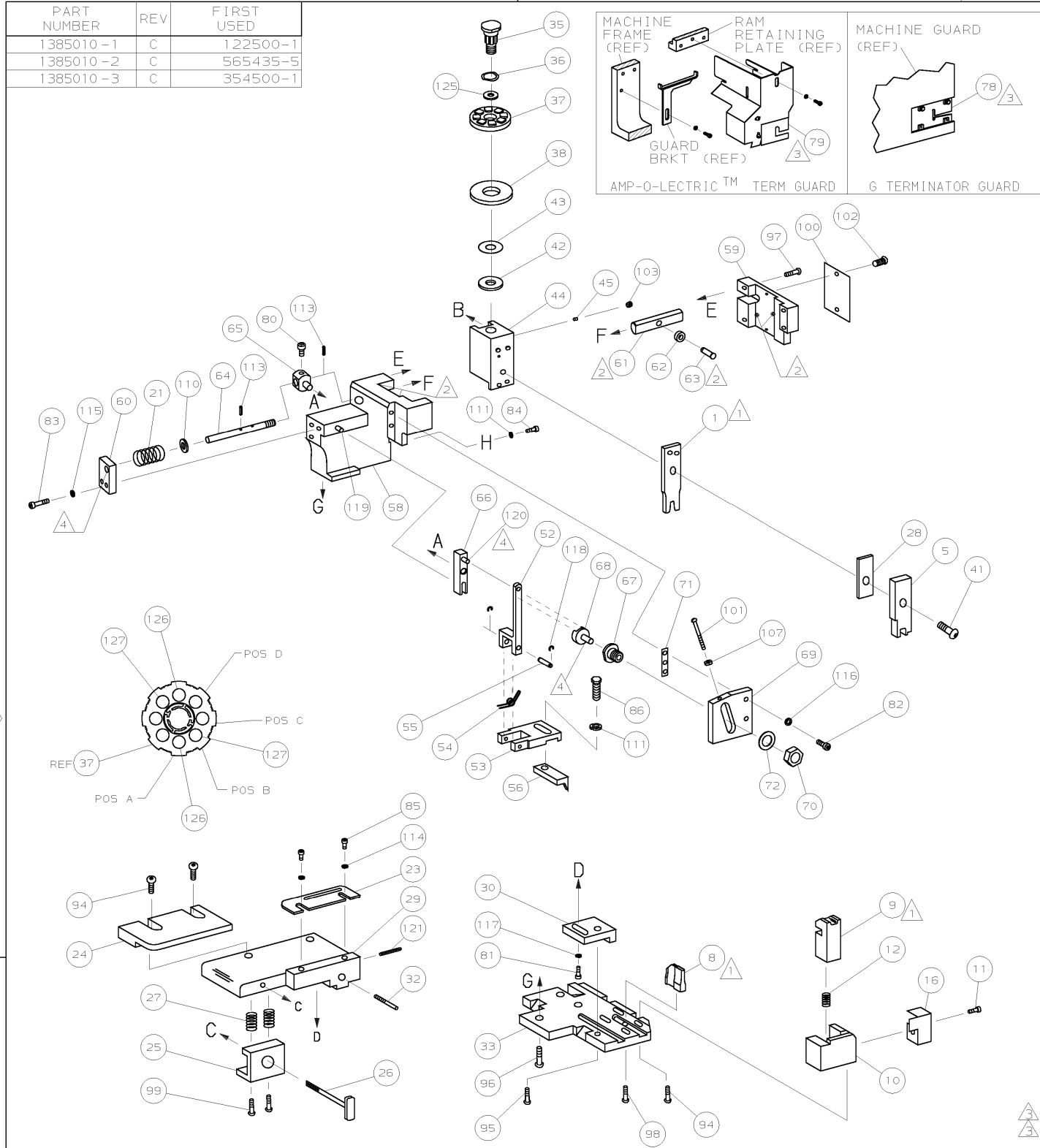
THIS DRAWING IS A CONTROLLED DOCUMENT.		DWN GOPALAKRISHNA HV		 TE Connectivity			
DIMENSIONS:		CHK RAGHAVENDRA					
		APVD RAGHAVENDRA		NAME SIDE FEED HDM APPL ASSY			
		PRODUCT SPEC					
		APPLICATION SPEC					
MATERIAL		WEIGHT		SIZE A3	CAGE CODE	DRAWING NO C- 1385010	RESTRICTED TO
FINISH		CUSTOMER DRAWING		SCALE		SHEET 1 OF 2	REV C1

DRAWING MADE IN THIRD ANGLE PROJECTION

1385010 1385010

/home/amp14442/ednmod

PART NUMBER	REV	FIRST USED
1385010-1	C	122500-1
1385010-2	C	565435-5
1385010-3	C	354500-1



- 1 RECOMMENDED SPARE PARTS.
2 GREASE LIGHTLY.
3 GUARD MUST BE IN PLACE WHEN OPERATING APPLICATOR IN A BENCH MACHINE.
4 LUBRICATE DAILY USING NO. 20 MACHINE OIL.
5. ITEMS WITH QTY OF REF SPECIFIED (EXCEPT ITEMS 78 AND 79) ARE USED ON ITEM 46.

TERMINAL NAME: SPLICE									
		1217267		CRIMP DATA (AMP TERMINAL)					
		1217569		PAD LTR	CRIMP HEIGHT			WIRE SIZE	
				A	.078 ±.002 [1.98 ±0.05mm]			14	
				B	.068 ±.002 [1.73 ±0.05mm]			16	
				C	NOT			USED	
				D	NOT			USED	
				CRIMP	SIZE		TYPE	RANGE	
				WIRE	.100 [2.54mm]		F	16-14	
				INSUL	-		-	-	
WIRE STRIP LENGTH		TERM APPL SPEC		FEED		APPL INSTRUCTION		SET UP GAGE	LAYOUT
.219-.234		NONE		.410		408-8040		458637-1	L2319
									129
									128
2	2	2	-	C	1-354779-0		PIN, WIRE D15C (.3040)B		127
2	2	2	-	C	8-354778-7		PIN, WIRE D15C (.2930)A		126
1	1	1	-	A	986950-1		WASHER, FLAT PRECISION		125
1	1	1	-	A	217238-1		GENERAL INSTRUCTION PACKAGE		124
1	1	1	-	-	4088040		SF APPL INST 408-8040		123
									122
1	1	1	-	A	4-21028-0		PIN,SLT SPR(ø.093x.75)ST GDE PL		121
REF	REF	REF	-	A	1-21030-1		PIN,DOWEL(ø.187x.50)LEVER		120
REF	REF	REF	-	A	1-21030-6		PIN,DOWEL(ø.187x1.25)HOUSING		119
REF	REF	REF	-	A	21045-3		RING,RET "C"(ø.187)FD FING PIN		118
1	1	1	-	A	21024-5		WASHER, LOCK(ø10)ADJ BLOCK		117
REF	REF	REF	-	A	21024-5		WASHER,LOCK(ø10)ADJ PLATE		116
REF	REF	REF	-	A	21024-5		WASHER,LOCK(ø10)FEED GDE ROD		115
2	2	2	-	A	21024-2		WASHER,LOCK(ø4)FRONT STP GUIDE		114
REF	REF	REF	-	A	5-21028-1		PIN,SLT SPR(ø.125x.50)ADJ ROD		113
									112
2	2	2	-	A	21024-4		WASHER, LOCK(ø8)STRIPPER		111
REF	REF	REF	-	A	21899-4		WASHER,FLAT(ø5/16)SCREW ADJ		110
									109
									108
REF	REF	REF	-	A	21068-5		NUT, HEX(6-32)FEED ADJ		107
									106
									105
1	1	-	-	A	992031-1		PIN, CLEVIS		104
1	1	1	-	A	21009-2		SCR,5KT 5ET(1/4-20x.25 LW)RAM		103
2	2	2	-	A	21017-2		SCR,DRIVE(ø2x.19)ID PLATE		102
REF	REF	REF	-	A	6-23715-5		SCR,PAN HD(6-32x1.50)FEED ADJ		101
1	1	1	-	B	461264-1		PLATE, IDENTIFICATION		100
2	2	2	-	A	3-21002-0		SCR,BHC(10-32x.88)DRAG		99
1	1	1	-	A	22733-8		SCR,BHC(8-32x.38 LW)ANVIL		98
REF	REF	REF	-	A	2-21002-9		SCR,BHC(10-32x.75)CAP		97
REF	REF	REF	-	A	2-22733-8		SCR,BHC(1/4-20x.62)HOUSING		96
REF	REF	REF	-	A	2-21002-7		SCR,BHC(10-32x.50)56 ADJ BLOCK		95
4	4	4	-	A	2-21002-2		SCR,BHC(8-32x.50)TERM H DWN		94
									93
									92
1	1	1	-	A	1-21002-7		SCR,BHC(6-32x.38)CAM		91
									90
1	1	-	-	A	7-21000-9		SCR,SHC(4-40x.19)STRIPPER		89
									88
									87
1	1	1	-	A	2-22603-0		SCR,HEX HD(8-32x.31)FEED FINGER		86
2	2	2	-	A	1-21000-3		SCR,SHC(4-40x.25)F ST GUIDE		85
1	1	1	-	A	2-21000-7		SCR,SHC(8-32x.50)STRIPPER		84
REF	REF	REF	-	A	3-21000-7		SCR,SHC(10-32x.75)FEED ROD GD		83
REF	REF	REF	-	A	3-21000-6		SCR,SHC(10-32x.62)FD ADJ BLK		82
1	1	1	-	A	3-21000-4		SCR,SHC(10-32x.38)56 ADJ BL		81
REF	REF	REF	-	A	3-21000-4		SCR,SHC(10-32x.38)PIVOT BLK		80
-	REF	-	-	B	455749-1		GUARD, WINDOW		79
REF	-	-	-	B	679532-1		INSERT, GUARD		78
									77
									76
									75
									74
									73
REF	REF	REF	-	A	458109-1		WASHER, SPECIAL		72
REF	REF	REF	-	A	690517-1		SPACER		71
-3	-2	-1	U/M	DWG SIZE	PART NO		DESCRIPTION		ITEM NO
QTY REQD PER ASSY				PARTS LIST					

Mouser Electronics

Authorized Distributor

Click to View Pricing, Inventory, Delivery & Lifecycle Information:

[TE Connectivity:](#)

[1385010-1](#)