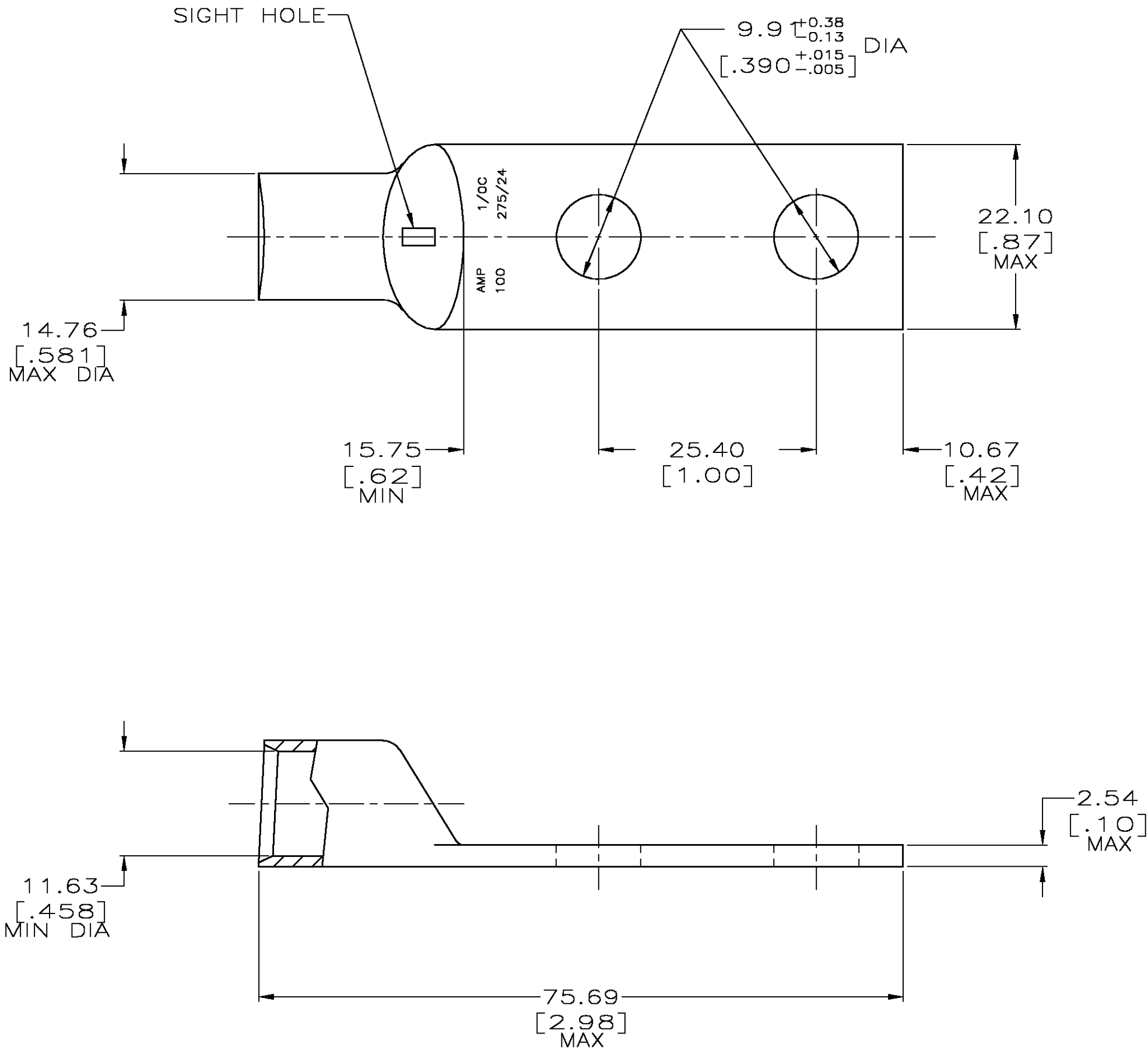


DRAWING MADE IN THIRD ANGLE PROJECTION

THIS DRAWING IS UNPUBLISHED. RELEASED FOR PUBLICATION .19 .
© COPYRIGHT 19 BY AMP INCORPORATED. ALL INTERNATIONAL RIGHTS RESERVED.

LOC	DIST	P	F	ZONE	LTR	REVISIONS	DATE	APPD
G	86				W	REV PER 0G3A-0786-03	08DEC03	MS



- 1 CIRCULAR MIL RANGE: 83,700-119,500 CM
- 2 TIN PL 0.00381[.000150] MIN THK PER ASTM B-545
- 3 CLEANED, UN-PLATED

3	326800-8
2	326800
FINISH	PART NO

DO NOT SCALE PRINT. UNLESS SPECIFIED DIMENSIONS IN mm [INCHES] TOLERANCES ON : 2 PLC DEC \pm 0.51[.020] 3 PLC DEC \pm - ANGLES \pm -	DR 02/28/90 DK SCHRUM	AMP AMP INCORPORATED Harrisburg, Pa. 17105		
MATERIAL	CHK 31AUG94 MS FEHER			
ANNEALED COPPER ASTM B-75	APPD 31AUG94 WJ VOCKROTH			
FINISH	APPD 31AUG94 TL SHUTTER	NAME		
SEE TABLE	PRODUCT SPEC	TERMINAL, AMPOWER, WIRE SIZE: 1/0 AWG		
	APPLICATION SPEC	SIZE	CAGE CODE	DRAWING NO
	WEIGHT .060 LB	C	00779	326800
		SCALE 2:1		SHEET 10F 1

METRIC

Mouser Electronics

Authorized Distributor

Click to View Pricing, Inventory, Delivery & Lifecycle Information:

[TE Connectivity:](#)

[326800](#)