

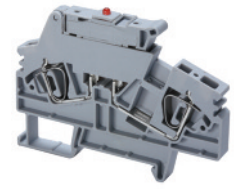
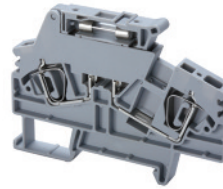
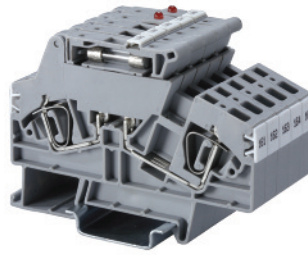
Altech offers 'Screwless' Spring Clamp Fuse Terminal Blocks.

The terminal has a moving type hinged carrier that has specially designed space for cartridge type glass fuse of size Ø 5 x 20 or Ø 5 x 25 mm. The fuse can be engaged or disengaged by the movement of the carrier.

Cross connection is possible with specially designed push-in type jumpers.

ASF4(L) is used for offline indication in case of a fuse blowout.

Fuse Spring Clamp, 5 x 20 and 5 x 25mm



	ASF4	ASF4(L)*
Terminal Width	8 mm	8 mm
Height x Length	60 x 86 mm	60 x 86 mm
Stripping Length	16 mm	16 mm
Insulation Material	Polyamide 6.6	Polyamide 6.6
Type of Connection	2 spring clamps & 2 slots for interconnection	2 spring clamps & 2 slots for interconnection
Type of fuse used	Ø5x20, Ø5x25 mm	Ø5x20, Ø5x25 mm
LED Voltage		24V AC/DC, 48V AC/DC 110V AC/DC, 220V AC
Approvals		
Wire Range	22-10 AWG	22-10 AWG
Voltage Rating	600 V	600 V
Current Rating	6.3 A	6.3 A
Other Approvals		

	Cat. No.	Std. Pk.	Cat. No.	Std. Pk.
Terminal Block	ASF4	100	ASF4(L)*	100
End Plate	EPASF4	50	EPASF4	50
DIN Rail for ordering information refer to pages 90-91				
End Stop for ordering information refer to page 92	CA103 CA702 CA802	50 50 50	CA103 CA702 CA802	50 50 50
Insulated Jumper (2 pole)	CA801/7	100	CA801/7	100
Marking Tags	MT8	100	MT8	100

COLOR BLOCKS (other than standard grey)		
When ordering please add color suffix to Cat. No.		
Example for color Red: Cat.No./R		
Color	Ordering Suffix	
Red	R	
Yellow	Y	
Blue	BU	
Green	G	
Consult Altech for availability:		
Orange	O	
Beige	BG	
Dark Brown	DB	
Black	BL	
White	W	

* Add required voltage to part number as a suffix. i.e. ASF4(L)/24 for 24V AC/DC.

Mouser Electronics

Authorized Distributor

Click to View Pricing, Inventory, Delivery & Lifecycle Information:

[Altech:](#)

[ASF4](#)