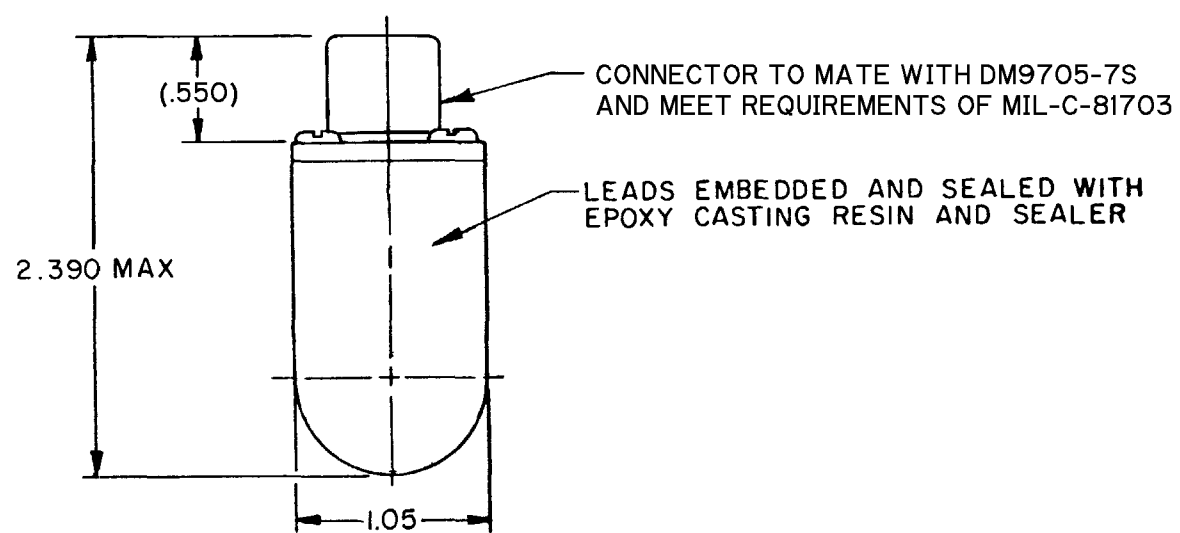
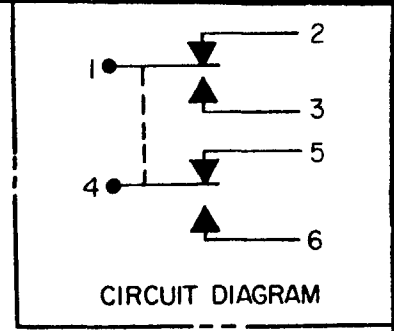
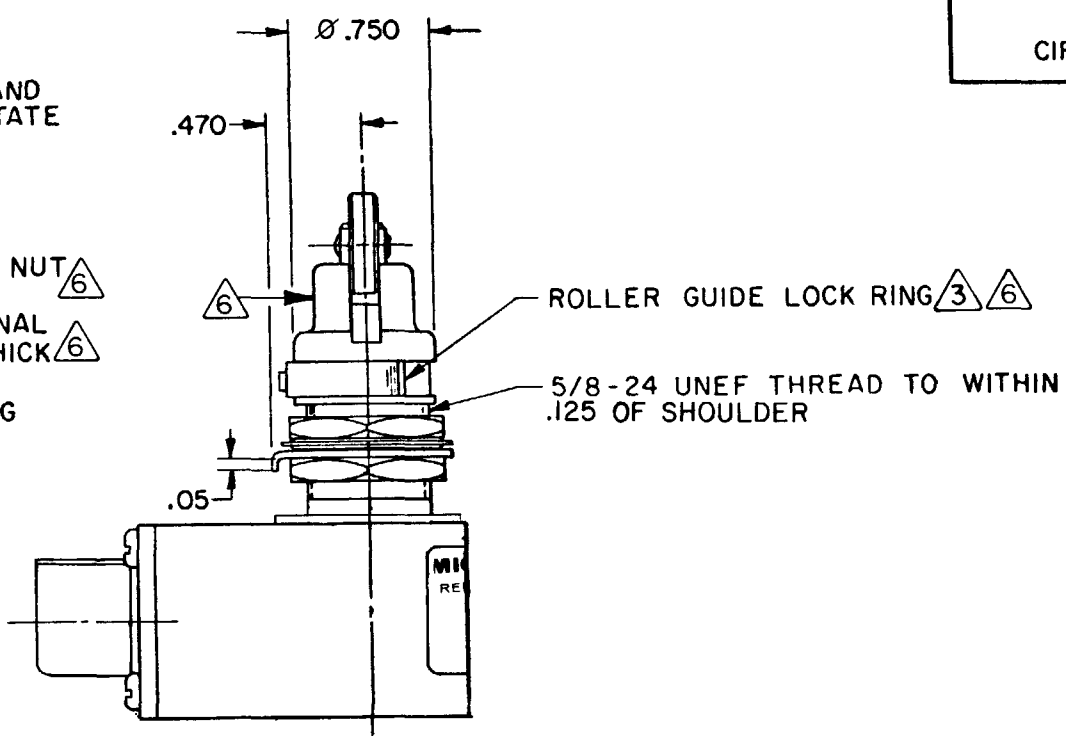
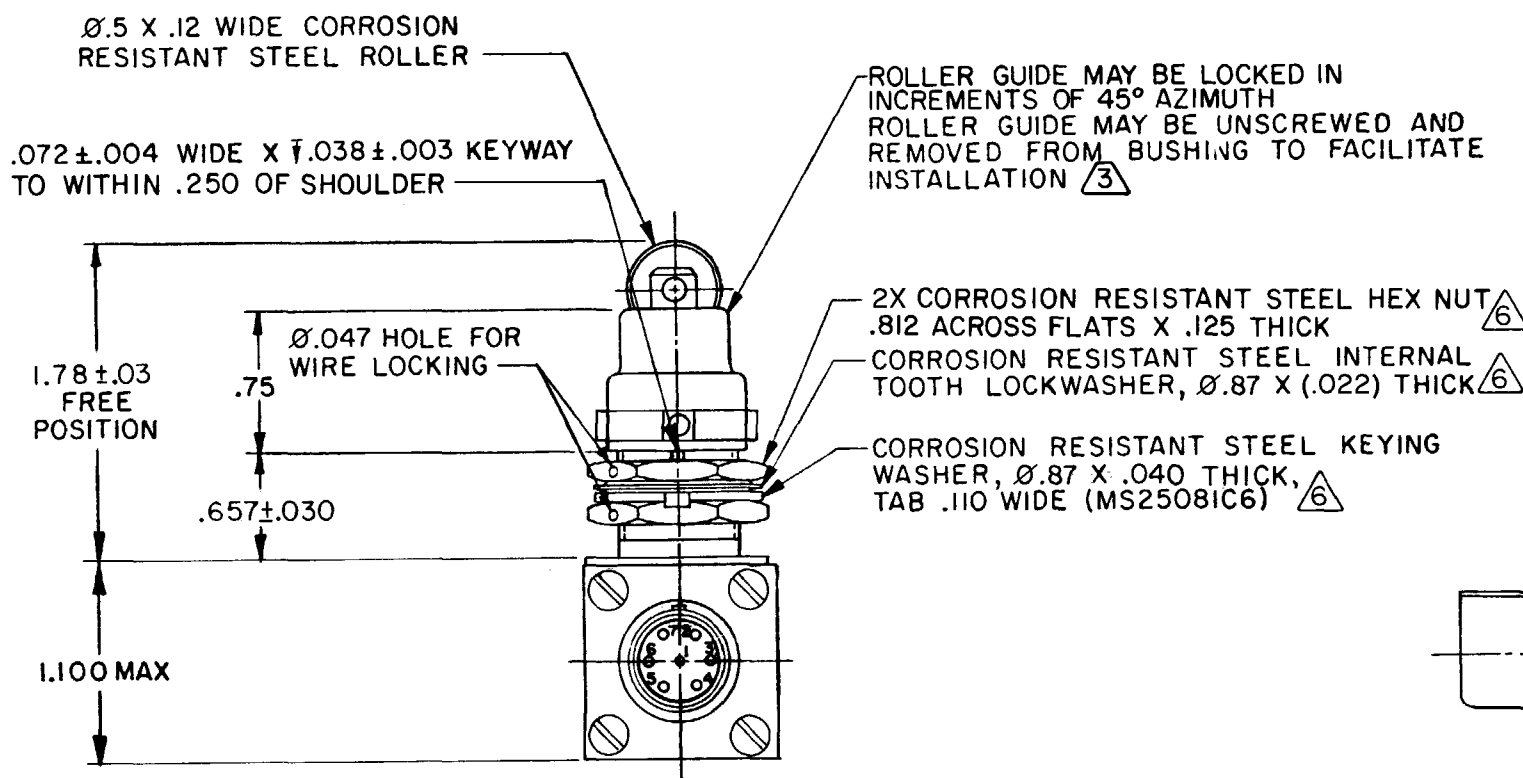


CATALOG LISTING
21EN31-R
PAGE 1 OF 1
REPLACES
RELEASE NO.
CHECK
REVISIONS
A CO 44351
WJM 18 SEP 79
B CO47573 PART 4
RJM 8 AUG 80
C CO47968
J A P 29 OCT 80
D CO59459
WJK 27 AUG 86
E CO-82809A
J A K 31 JUL 96
F CO84717
J A K 25 JUN 97
G CO80689
J A S 24 JUN 98
FORMTEK
DRAWN
WJM 18 SEP 79
CHECK
FORMTEK



- NOTES
- 1 - ENCLOSURE FINISHED WITH GREEN EPOXY BASED ENAMEL COLOR NO. 34151 PER FEDERAL STD 595
 - 2 - SWITCH SEALED PER MIL-S-8805 SYMBOL 4
 - ③ TO ADJUST ROLLER DIRECTION, REMOVE ROLLER GUIDE LOCK RING, SCREW ROLLER GUIDE DOWN AS FAR AS POSSIBLE, THEN UNSCREW TO DESIRED DIRECTION. SECURE BY REPLACING ROLLER GUIDE LOCK RING
 - 4 - CIRCUIT DIAGRAM AND CATALOG LISTING ARE SHOWN ON NAME-PLATE
 - 5 - COINCIDENCE OF OPERATING AND RELEASING POINTS: .010 OF PLUNGER TRAVEL
 - ⑥ HARDWARE MAY BE PACKAGED UNASSEMBLED PER MIL-S-8805

THIS DRAWING COVERS A PROPRIETARY ITEM AND IS THE PROPERTY OF MICRO SWITCH, A DIVISION OF MINNEAPOLIS-HONEYWELL REGULATOR CO. THIS DRAWING IS NOT TO BE COPIED OR USED WITHOUT THE APPROVAL OF MICRO SWITCH.			
CHARACTERISTICS		ELECTRICAL DATA	
OPERATING FORCE ----- 6-12 LB		CONTACT ARRANGEMENT 2X S P D T	
FULL OVERTRAVEL FORCE----- 30 LB MAX		28 VDC	
RELEASE FORCE ----- 4 LB MIN		SEA LEVEL 50,000 FT.	
PRETRAVEL ----- .040 MAX		LOAD	
DIFFERENTIAL TRAVEL ----- .020 MAX		RES	4
OVERTRAVEL ----- .250 MIN		IND	2
		MOTOR	4
		SCALE FULL	
		DO NOT SCALE PRINT	
		UNLESS OTHERWISE NOTED	
		DIMENSIONS ARE IN INCHES	
		TOLERANCES ARE:	
		ONE PLACE (.0)	±.030
		TWO PLACE (.00)	±.015
		THREE PLACE (.000)	±.008
		ANGLES	±
		WEIGHT 6 OZ MAX	

ANSI Y14.5M-1982 APPLIES

Mouser Electronics

Authorized Distributor

Click to View Pricing, Inventory, Delivery & Lifecycle Information:

[Honeywell:](#)

[21EN31-R](#)