

## Housing - VC-MP-T4-Z-M25 - 1886702

Please be informed that the data shown in this PDF Document is generated from our Online Catalog. Please find the complete data in the user's documentation. Our General Terms of Use for Downloads are valid (<http://phoenixcontact.com/download>)



Powder-coated sleeve housing, with metric cable entry, locking screws with cylinder head



### Key Commercial Data

Packing unit	1 pc
Weight per Piece (excluding packing)	352.97 g
Custom tariff number	85389099
Country of origin	Poland

### Technical data

#### Dimensions

Height	75 mm
Width	33 mm
Length	104 mm

#### Ambient conditions

Ambient temperature (operation)	-40 °C ... 125 °C
---------------------------------	-------------------

#### General

Note	When using fiber optics, the bending radii of the cable manufacturers must be observed.
Size	VC4
Housing type	Sleeve housing
Color	gray
Locking type	Screw locking, cylinder head
Tightening torque, mounting screw	1.5 Nm ±0.3 Nm
No. of cable outlets	1
Cable exit	Angled

## Housing - VC-MP-T4-Z-M25 - 1886702

### Technical data

#### General

Screw connection	none
Type of the screw connection	M25
Housing material	Zinc die-cast
Housing surface material	Powder coating
Seal material	EPDM
Material of locking screw	V2A

### Classifications

#### eCl@ss

eCl@ss 4.0	27140816
eCl@ss 4.1	27140816
eCl@ss 5.0	27371205
eCl@ss 5.1	27371205
eCl@ss 6.0	27371205
eCl@ss 7.0	27371205
eCl@ss 8.0	27440202
eCl@ss 9.0	27440202

#### ETIM

ETIM 2.0	EC000437
ETIM 3.0	EC000437
ETIM 4.0	EC000437
ETIM 5.0	EC000437

#### UNSPSC

UNSPSC 6.01	31261502
UNSPSC 7.0901	31261502
UNSPSC 11	31261502
UNSPSC 12.01	31261502
UNSPSC 13.2	31261502

### Accessories

#### Accessories

## Housing - VC-MP-T4-Z-M25 - 1886702

### Accessories

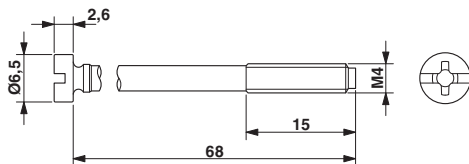
Marking label - VC-BZS WH - 1852875



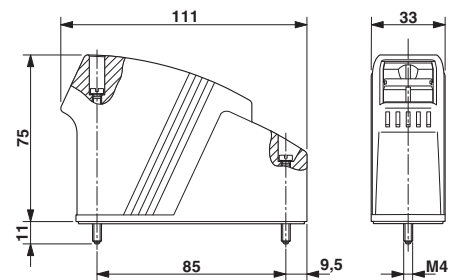
Marker labels, unprinted, 5-section, for individual labeling with M-PEN or CMS system, white

### Drawings

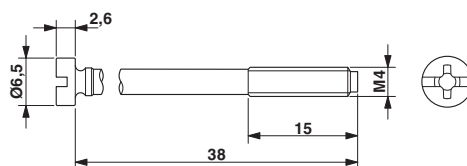
Dimensional drawing



Dimensional drawing



Dimensional drawing



# Mouser Electronics

Authorized Distributor

Click to View Pricing, Inventory, Delivery & Lifecycle Information:

Phoenix Contact:

1886702