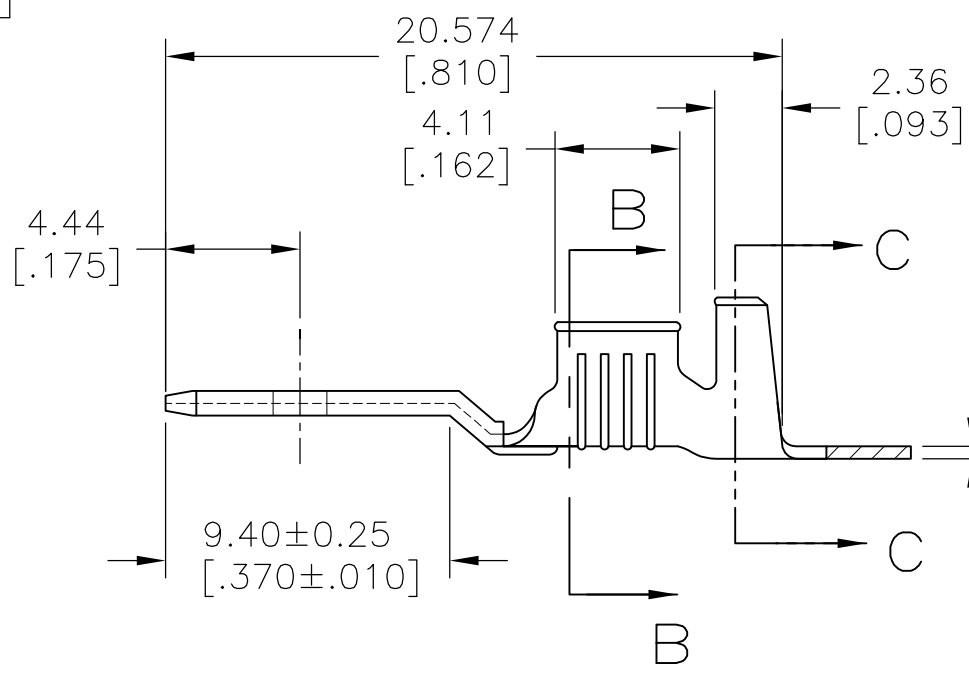
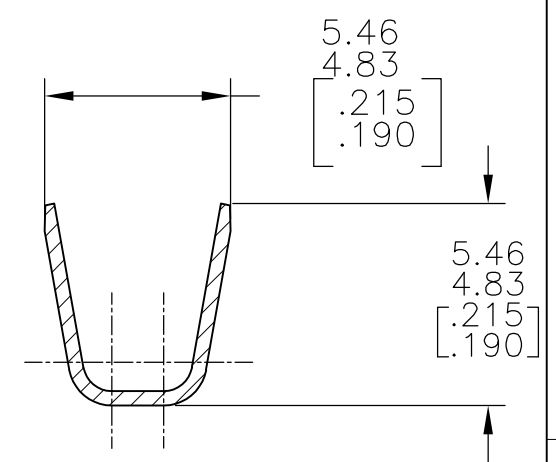
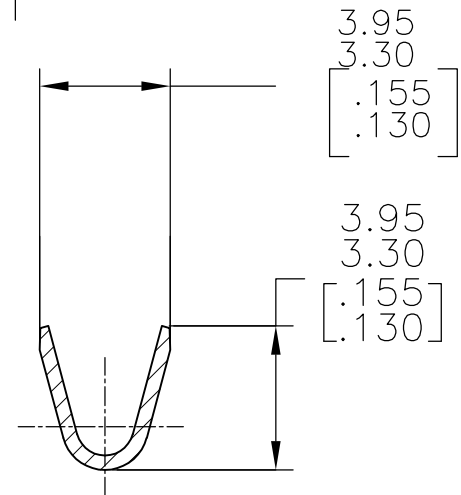
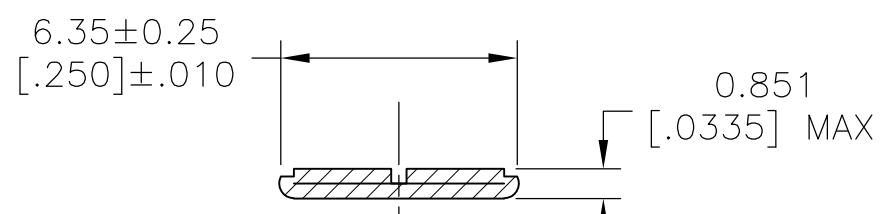
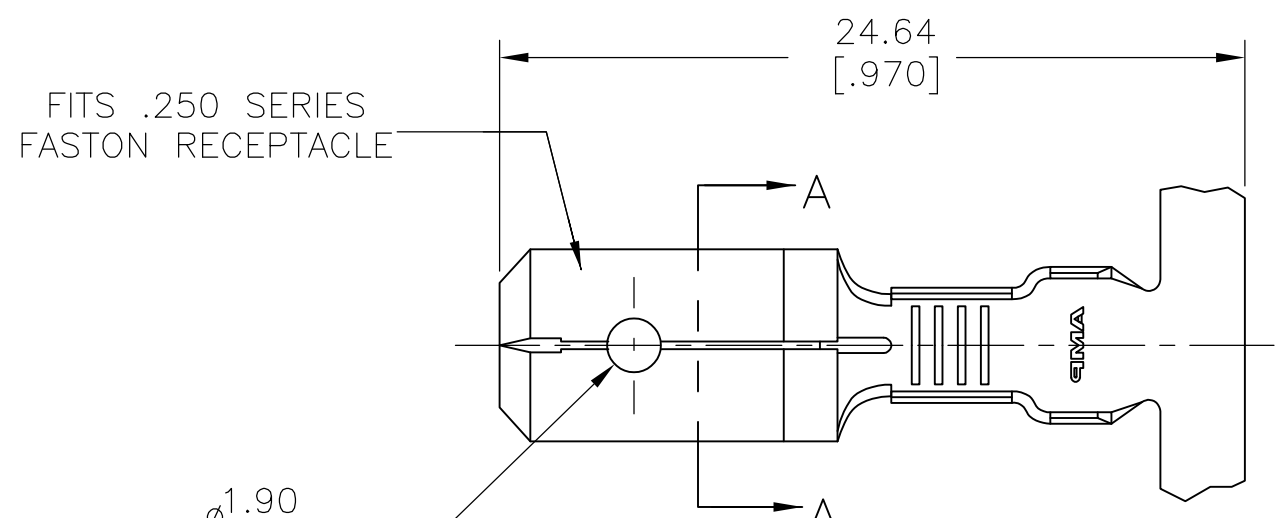


THIS DRAWING IS UNPUBLISHED. RELEASED FOR PUBLICATION  
 © COPYRIGHT - By - ALL RIGHTS RESERVED.

LOC	DIST	REVISIONS					
AF	50	P	LTR	DESCRIPTION	DATE	DWN	APVD
		V		REVISED PER ECR-13-011489	06DEC2013	KH	PD



0.38 ± 0.025  
 [.015] ± .001

6	4	TIN	2.794-3.81 [.110-.150] DIA	18-14 AWG	42474-7
5		-			42474-6
5		SILVER .000120 MIN			42474-5
4		TIN			42474-4
3		-			42474-3
		TIN			42474-2
5		-		42474-1	
FINISH			INSULATION RANGE	WIRE SIZE	PART NO

- 1 CONTINUOUS STRIP ON REELS.
- 2 FEED TO BE .540#.005.
- 3 REVERSED REEL OF 42474-1.
- 4 REVERSED REEL OF 42474-2.
- 5 FOREIGN PRODUCTION ONLY.
- 6 LUBRICANT APPLIED AFTER TIN PLATING.

THIS DRAWING IS A CONTROLLED DOCUMENT.		DWN	JR RUTH	1/31/91	<b>STE</b> TE Connectivity		
DIMENSIONS: mm [INCHES]		CHK	MS FEHER	1/31/91			
TOLERANCES UNLESS OTHERWISE SPECIFIED:		APVD	C MEYERS	1/31/91	NAME		
0 PLC ± -		PRODUCT SPEC		TAB, FASTON™ .250 SERIES			
1 PLC ± -		APPLICATION SPEC		SIZE	CAGE CODE	DRAWING NO	RESTRICTED TO
2 PLC ± -		MATERIAL		A300779		C-42474	-
3 PLC ± .015		FINISH		CUSTOMER DRAWING		SCALE	SHEET
4 PLC ± -		SEE TABLE		4:1		1 OF 1	REV
ANGLES ± -							V