

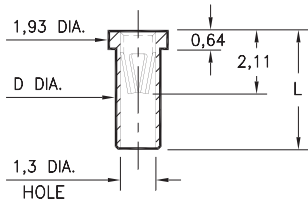
PIN RECEPTACLES

FOR 0,64 - 0,94 DIAMETER PINS AND 0,64 SQUARE PINS

0305

0305-X-15-XX-47-XX-10-0

Solder mount in 1,5/1,55 mounting hole
Also available on 8mm or 24mm wide carrier tape: See chart for details
See page 194.9 for Tape & Reel details



Basic Part Number	Length L	Dia. D
0305-0	2,41	1,42
0305-1	2,67	1,47
0305-2	3,94	1,47

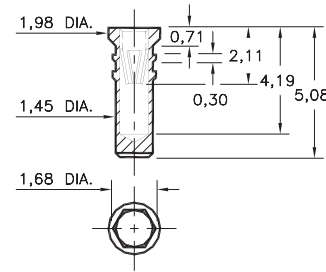
T&R Packaging

Basic Part Number	Tape Width	Parts per 330mm Reel
0305-0	8mm	6,000
0305-1	8mm	6,000
0305-2	24mm	1,500

0279

0279-0-15-XX-47-XX-10-0

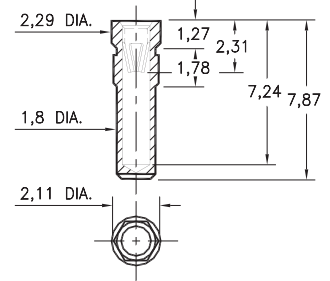
Hex press-fit in 1,57 plated through-hole



0330

0330-0-15-XX-47-XX-10-0

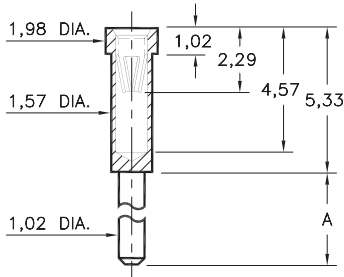
Hex press-fit in 2,01 plated through-hole



0300/8300

X300-X-15-XX-47-XX-10-0

Solder mount in 1,07 min. mounting hole

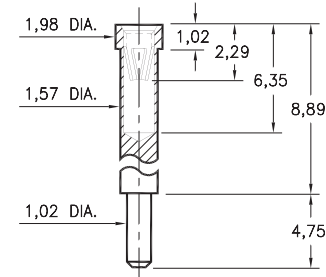


Basic Part Number	Length A
0300-1	2,79
0300-2	4,75
8300-0	3,56

0301

0301-1-15-XX-47-XX-10-0

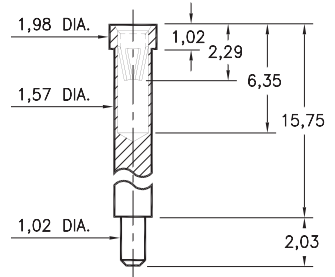
Solder mount in 1,07 min. mounting hole



0309

0309-2-15-XX-47-XX-10-0

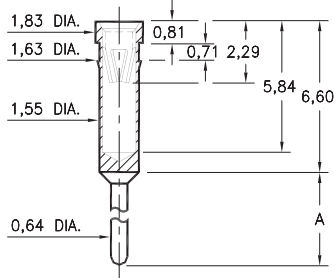
Solder mount in 1,07 min. mounting hole



0399

0399-X-15-XX-47-XX-04-0

Press-fit in 1,55 mounting hole

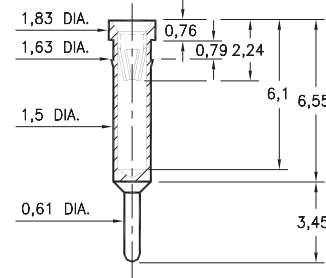


Basic Part Number	Length A
0399-0	5,84
0399-1	4,57

1304

1304-0-15-XX-47-XX-04-0

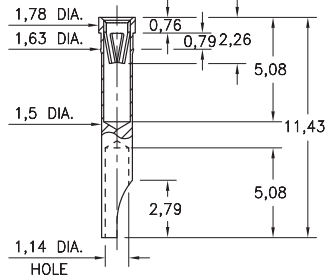
Press-fit in 1,55 mounting hole



1134

1134-0-18-15-47-27-10-0

Press-fit in 1,55 mounting hole



SPECIFICATIONS:

Shell Material: Brass Alloy 360, 1/2 Hard

Contact Material: Beryllium Copper Alloy 172, HT

Dimensions: Millimeters

Tolerances On: Lengths: ± 0,13

Diameters: ± 0,051

Angles: ± 2°



ORDER CODE: XXXX - X - XX - XX - 47 - XX - XX - 0

BASIC PART #

SPECIFY SHELL FINISH:

- 01 5,08µm TIN/LEAD OVER NICKEL
- ◆ 80 5,08µm TIN OVER NICKEL (RoHS)
- ◆ 15 0,25µm GOLD OVER NICKEL (RoHS)

SPECIFY CONTACT FINISH:

- 01 5,08µm TIN/LEAD OVER NICKEL
- ◆ 80 5,08µm TIN OVER NICKEL (RoHS)
- ◆ 27 0,76µm GOLD OVER NICKEL (RoHS)

SELECT CONTACT:

#47 CONTACT (DATA ON PAGE 256)

(For alternate contact choices, see group D on page 248)



Mouser Electronics

Authorized Distributor

Click to View Pricing, Inventory, Delivery & Lifecycle Information:

[Mill-Max:](#)

[0309-2-15-15-47-14-10-0](#) [0399-0-15-15-47-27-04-0](#)