

APPROVED BY/DATE
 C. Westerb 10-15-92
 REV 4

SAFETY ORGANIZATION(S).

THIS FILTER HAS BEEN FORMALLY RECOGNIZED, CERTIFIED OR APPROVED BY THE LISTED AGENCY. THEREFORE, ALL TEST/REQUIREMENTS SPECIFIED IN THE LATEST REVISION OF THE FOLLOWING AGENCY STANDARDS HAVE BEEN MET.

UL RECOGNIZED
 CSA CERTIFIED
 VDE APPROVED
 UL 1283
 CSA 22.2, NO. 0.0.4.8
 VDE 565-3

OPERATING SPECIFICATIONS:

LINE VOLTAGE/CURRENT:
 5 AMP., 120/250 VAC
 5 AMP/40°C, 250 VAC
 50-60Hz
 .3mA @ 120V 60Hz
 .5mA @ 250V 50Hz
 -10°C TO +40°C @ RATED CURRENT, I_r

IN AN AMBIENT, T_a, HIGHER THAN 40°C, THE MAXIMUM OPERATING CURRENT, I_o, IS AS FOLLOWS:

$$I_o = I_r \sqrt{\frac{85 - T_a}{45}}$$

RELIABILITY SPECIFICATIONS:

STORAGE TEMPERATURE:
 -25°C TO +85°C
 HUMIDITY:
 21 DAYS @ 40°C 95% RH
 CURRENT OVERLOAD TEST:
 6 TIMES RATED CURRENT FOR 8 SECONDS

TEST SPECIFICATIONS:

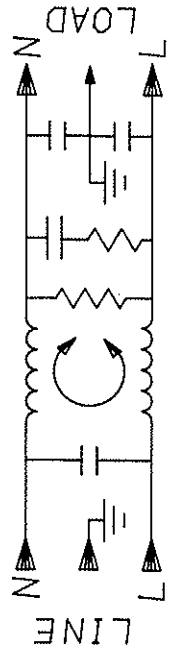
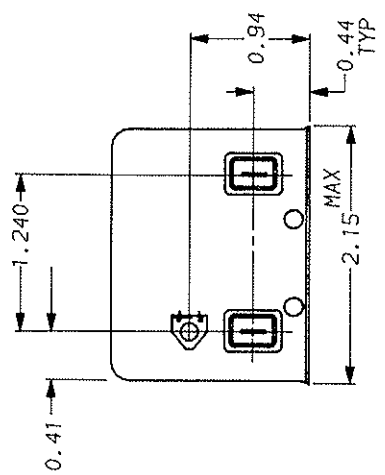
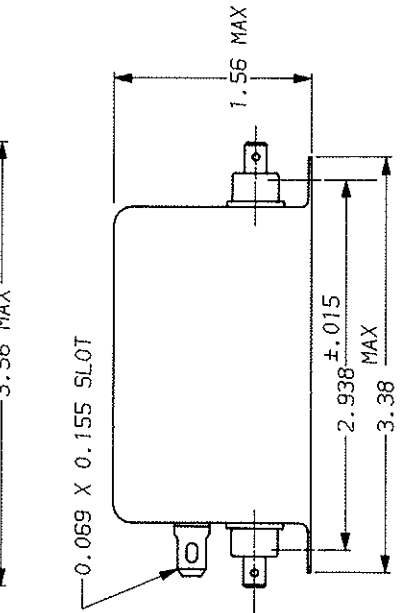
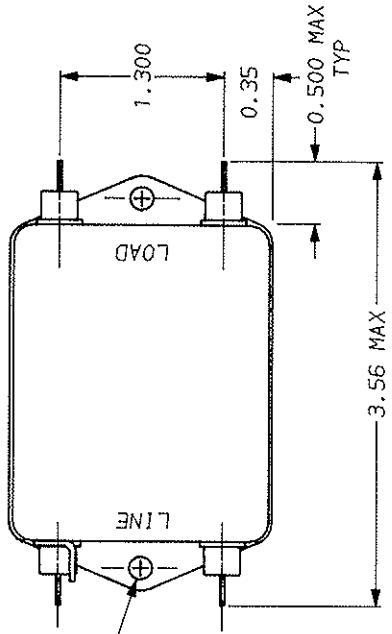
INDUCTANCE:
 CAPACITANCE: MEASURED @ 1 KHz, 0.25 VAC MAX., 25°C ±1°C
 .004µF ±20%
 .57µF ±20%
 560KΩ
 6000 MΩ (MIN) AT 100 VDC
 20°C AND 50% RH
 LINE TO GROUND,
 LINE TO LINE,
 DISCHARGE RESISTOR,
 LINE/GROUND AND LINE/LINE
 INSULATION RESISTANCE
 (W/O DISCHARGE RESISTOR)

RECOMMENDED RECEIVING INSPECTION HIPOT:

2250 VDC FOR 1 MINUTE
 1450 VDC FOR 1 MINUTE

FILTER APPROVAL:

THE BEST WAY TO SELECT AND QUALIFY A FILTER IS FOR YOUR ENGINEERING TO TEST THE UNIT IN YOUR EQUIPMENT.



50Ω - 50Ω MINIMUM INSERTION LOSS											
FREQUENCY MHZ	.01	.05	.07	.1	.15	.5	1	5	10	20	30
COMMON	6	19	23	25	29	48	44	43	43	40	40
DIFF.	4	6	10	24	37	66	75	72	60	50	50

This document is proprietary to CORCOM INC. and is not to be reproduced nor used for manufacturing purposes except on CORCOM's order or prior written consent.

TOLERANCE EXCEPT AS NOTED
 DECIMAL: .XXX .XX .X ANGLES
 ENGLISH: ±.025 ±1.
 METRIC: ±

corcom
 LIBERTYVILLE, IL 60048
POWER LINE FILTER

SCALE: NTS 15-12-88
 REV. NO. 6EG1.04
 DATE: 10/15/92
 DRAWN BY: TDL
 DESIGNED BY: CW

Mouser Electronics

Authorized Distributor

Click to View Pricing, Inventory, Delivery & Lifecycle Information:

[TE Connectivity:](#)

[6EG1](#)