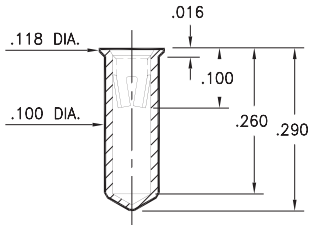


# PIN RECEPTACLES

**FOR .040" - .050" DIAMETER PINS (#02 CONTACT)**  
**FOR .040" - .060" DIAMETER PINS (#03 CONTACT)**

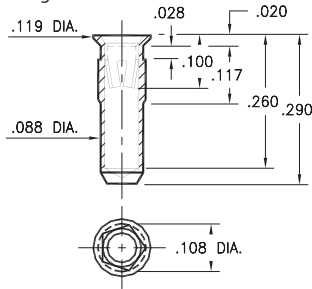
## 0355

**0355-0-15-XX-02-XX-10-0**  
 Solder mount in .102 min. mounting hole  
 Also available on 24mm wide carrier tape:  
 700 parts per 13" reel  
 See page 194.16 for Tape & Reel details



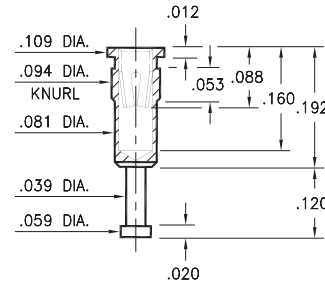
## 0354

**0354-0-15-XX-02-XX-10-0**  
 Pentagonal press-fit in .104 min. plated through-hole



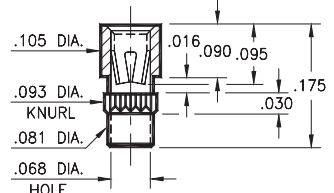
## 3490

**3490-0-15-XX-02-XX-10-0**  
 Press-fit in .091 mounting hole



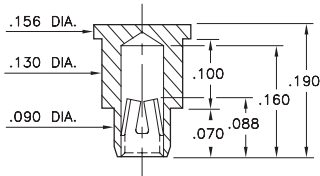
## 3808

**3808-0-15-XX-02-XX-10-0**  
 Press-fit in .090 mounting hole



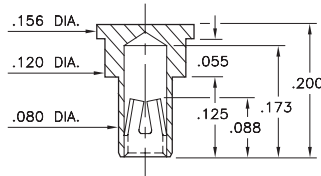
## 9184

**9184-0-15-XX-02-XX-40-0**  
 Bottom entry, surface mount  
 .092 min. plated through-hole  
 Also available on carrier tape,  
 See page 194.16 for Tape & Reel details



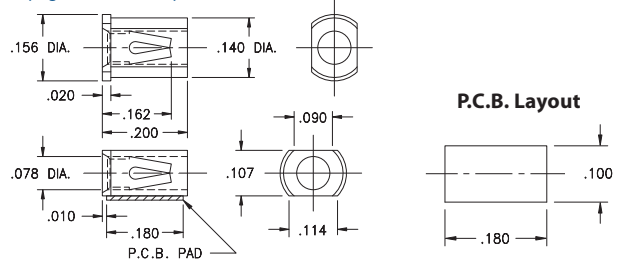
## 9222

**9222-2-15-XX-02-XX-40-0**  
 Bottom entry, surface mount  
 .082 min. plated through-hole  
 Also available on carrier tape,  
 See page 194.16 for Tape & Reel details



## 4064

**4064-0-18-XX-03-XX-40-0**  
 Surface mount  
 Also available on 16mm wide carrier tape:  
 2,400 parts per 13" reel  
 See page 194.17 for Tape & Reel details



### SPECIFICATIONS:

**Shell Material:** Brass Alloy 360, 1/2 Hard  
**Contact Material:** Beryllium Copper Alloy 172, HT  
**Dimensions:** Inches  
**Tolerances On:** Lengths: ±.005  
 Diameters: ±.002  
 Angles: ± 2°



**ORDER CODE: XXXX - X - XX - XX - XX - XX - 0**

**BASIC PART #**

**SPECIFY SHELL FINISH:**

- 01 200 μ" TIN/LEAD OVER NICKEL
- ◆ 80 200 μ" TIN OVER NICKEL (RoHS)
- ◆ 15 10 μ" GOLD OVER NICKEL (RoHS)

**SPECIFY CONTACT FINISH:**

- 01 200 μ" TIN/LEAD OVER NICKEL
- ◆ 80 200 μ" TIN OVER NICKEL (RoHS)
- ◆ 27 30 μ" GOLD OVER NICKEL (RoHS)

**SELECT CONTACT:**

**#02 or #03 CONTACT (DATA ON PAGE 259)**  
 (For alternate contact choices, see group F on page 248)

