

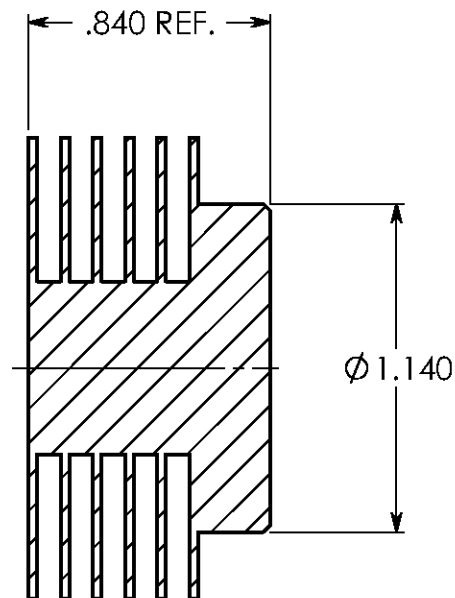
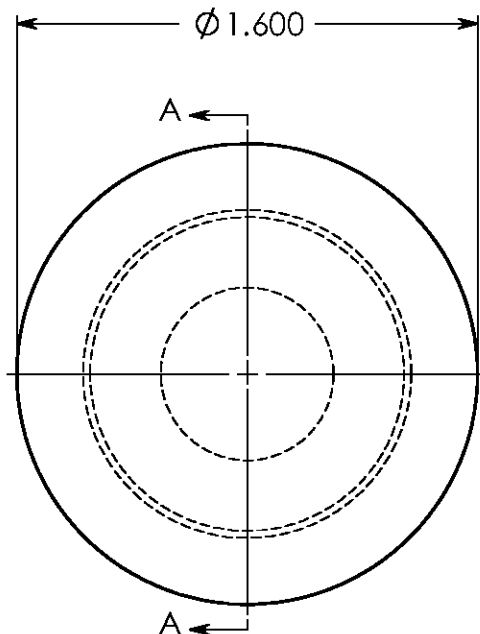
CONFIDENTIAL PROPERTY OF TYCO ELECTRONICS. NOT TO BE DISCLOSED TO OTHERS. REPRODUCED OR USED FOR ANY PURPOSES EXCEPT AS AUTHORIZED IN WRITING BY AN AUTHORIZED OFFICIAL OF TYCO. MUST BE RETURNED TO TYCO ON DEMAND, ON COMPLETION OF ORDERS OR OTHER PURPOSES FOR WHICH LENT.

REF PART NO:

REVISION(S)

LTR	DESCRIPTION	INIT	APP'D
A	NEW RELEASE	K.B 4/11/00	C.R 4/11/00
B	ECN: 0S60-0152-05	E.T 5/25/05	S.D 5/25/05

CUSTOMER DRAWING



SECTION A-A

P/N	FINISH
1542236-2	ANODIZE BLK (MIL-A-8625 TYPE II)
1542236-4	ANODIZE. BLACK SALEABLE PACKAGED VERSION

TOLERANCES UNLESS OTHER WISE SPECIFIED		CAD GENERATED DRAWING.		<div>tyco / Electronics</div> Attleboro Falls Massachusetts 02789			
ANGLES =± 1°		DO NOT MANUALLY UPDATE		DESCRIPTION	HEAT SINK		
FRACTIONS =± .02		APPROVALS	DATE				
.XX =± .010		DRAWN:	K.B 4/11/00	DIMENSIONS ARE IN: INCHES	SCALE: 1.5:1	TYCO PART NO: SEE TABLE	SHEET: 1 OF 1
.XX X =± .005		CHECKED:	C.R 4/11/00				
MATERIAL: ALUM.		APP'D BY:		THIRD ANGLE PROJECTION	SIZE: A	DWG. NO. C-1542236	REV: B
FINISH: SEE TABLE							
				PATH: N:\ENG\PART NUMBERS\HEAT SINK\C-1542236			

Mouser Electronics

Authorized Distributor

Click to View Pricing, Inventory, Delivery & Lifecycle Information:

[TE Connectivity:](#)

[1542236-4](#)