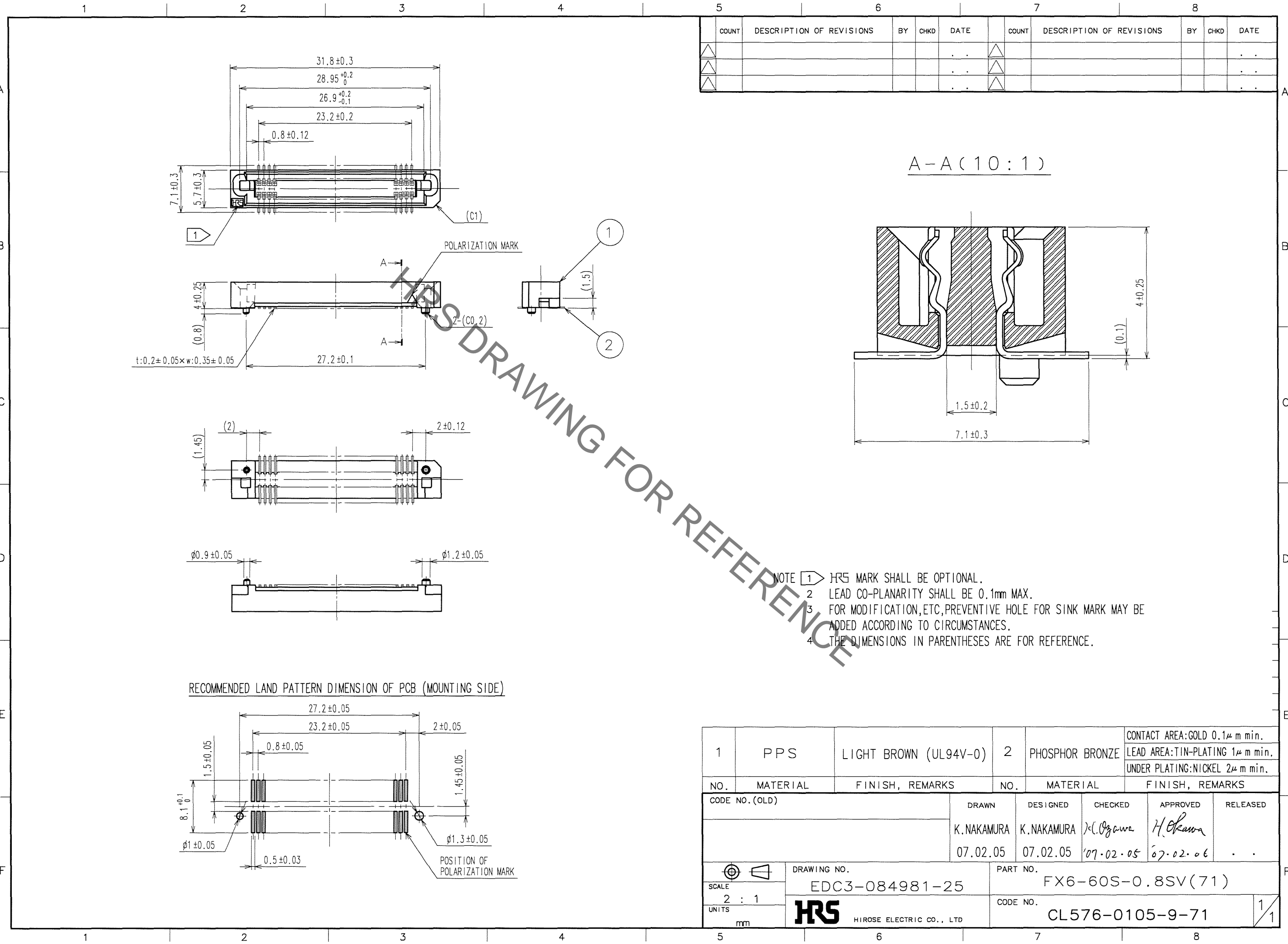


Sep.1.2020 Copyright 2020 HIROSE ELECTRIC CO., LTD. All Rights Reserved.
In case of consideration for using Automotive equipment / device which demand high reliability, kindly contact our sales window correspondents.



COUNT	DESCRIPTION OF REVISIONS	BY	CHKD	DATE	COUNT	DESCRIPTION OF REVISIONS	BY	CHKD	DATE
△					△				
△					△				
△					△				

- NOTE
- HR5 MARK SHALL BE OPTIONAL.
 - LEAD CO-PLANARITY SHALL BE 0.1mm MAX.
 - FOR MODIFICATION, ETC, PREVENTIVE HOLE FOR SINK MARK MAY BE ADDED ACCORDING TO CIRCUMSTANCES.
 - THE DIMENSIONS IN PARENTHESES ARE FOR REFERENCE.

RECOMMENDED LAND PATTERN DIMENSION OF PCB (MOUNTING SIDE)

1	PPS	LIGHT BROWN (UL94V-0)	2	PHOSPHOR BRONZE	CONTACT AREA: GOLD 0.1μm min. LEAD AREA: TIN-PLATING 1μm min. UNDER PLATING: NICKEL 2μm min.
NO.	MATERIAL	FINISH, REMARKS	NO.	MATERIAL	FINISH, REMARKS
CODE NO. (OLD)			DRAWN	DESIGNED	CHECKED
			K. NAKAMURA	K. NAKAMURA	C. Ozawa
			07.02.05	07.02.05	'07-02-05
			APPROVED	RELEASED	
			H. Okawa		
			07-02-06		
DRAWING NO.			PART NO.		
EDC3-084981-25			FX6-60S-0.8SV(71)		
SCALE			CODE NO.		
2 : 1			CL576-0105-9-71		
UNITS			1/1		
mm					

TO