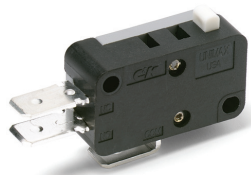


# TM Series Miniature Snap-acting Switches



## Features/Benefits

- Broad range of operating forces available
- Wide variety of actuator and terminal styles
- Cost-effective solution

## Typical Applications

- Pumps and motors
- White goods
- Consumer appliances



## Specifications

CONTACT RATING: From low level\* to 15 AMPS @ 250 V AC.  
 ELECTRICAL LIFE: 150,000 cycles at 15 AMPS @ 250 V AC, models with 150 grams operating force. 350,000 cycles at 10 AMPS @ 250 V AC, models with 75 grams operating force.  
 INSULATION RESISTANCE: 1,000 M ohms min.  
 DIELECTRIC STRENGTH: 1,000 Vrms min. @ sea level.  
 OPERATING TEMPERATURE: -67°F to 302°F (-55°C to 150°C).  
 OPERATING FORCE: 50, 75 and 150 grams at actuator available; refer to chart for lever style forces.  
 MOUNTING: Torque screws 2-5 in/lbs.

\* Low Level=conditions where no arcing occurs during switching, i.e., 0.4 VA max. @ 20 V AC or DC max.

## Materials

SWITCH HOUSING: Thermoplastic or general purpose phenolic (UL 94V-0).  
 ACTUATOR BUTTON: Thermoplastic (UL 94V-0).  
 SPRING: Copper alloy.  
 PIVOT: Brass alloy.  
 MOVABLE CONTACTS: Gold alloy for ratings 1 AMP @ 125 V AC or less. Fine silver for ratings greater than 1 AMP @ 125 V AC.  
 STATIONARY CONTACTS: Gold alloy for ratings 1 AMP or less. Fine silver for ratings greater than 1 AMP.  
 TERMINALS: Brass alloy for ratings up to 10 AMPS @ 250 V AC. Copper alloy for 15 AMPS @ 250 V AC ratings.

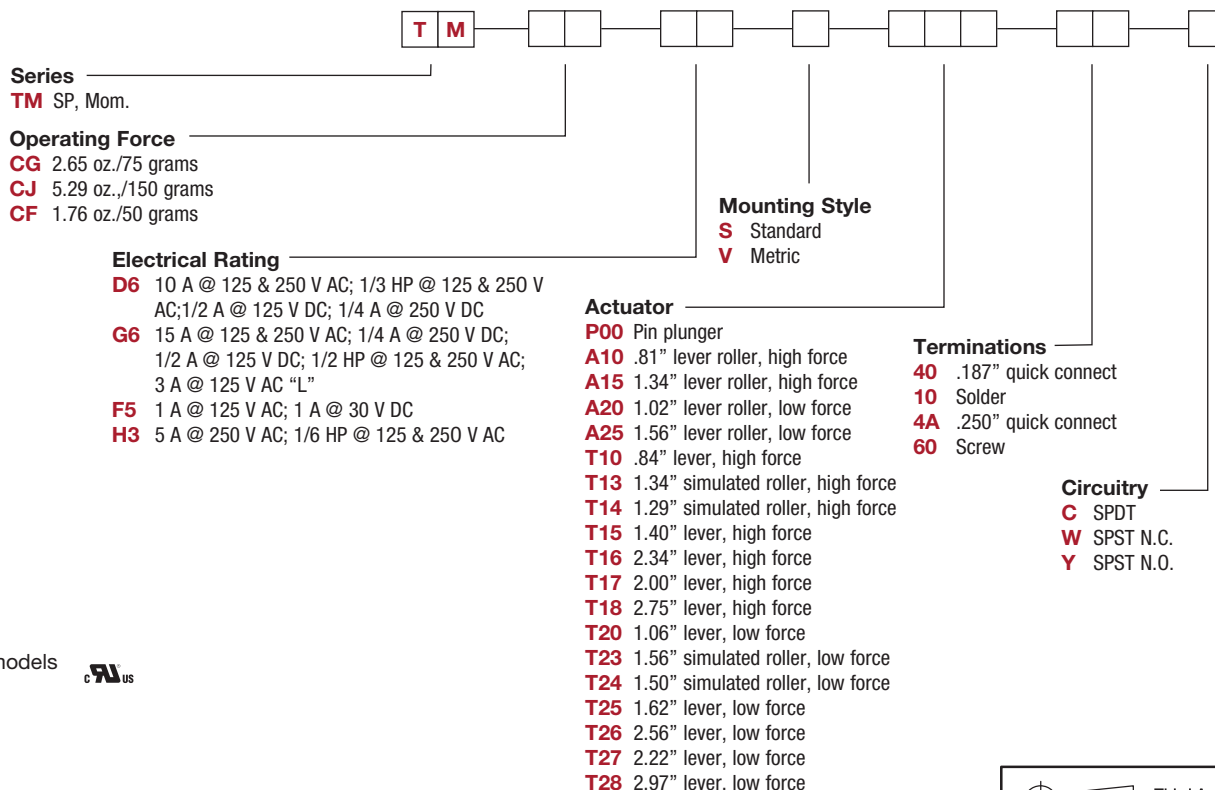
**NOTE:** Specifications and materials listed above are for switches with standard options. For information on specific and custom switches, consult Customer Service Center.



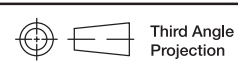
Snap-acting

## Build-A-Switch

To order, simply select desired option from each category and place in the appropriate box. Available options are shown and described on pages J-26 through J-31. For additional options not shown in catalog, consult Customer Service Center. Available extended electrical life per UL 1054, rated for 100,000 operations, consult factory.



\* All models



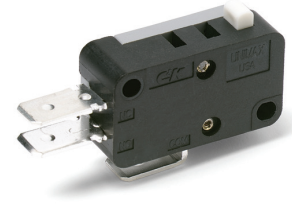
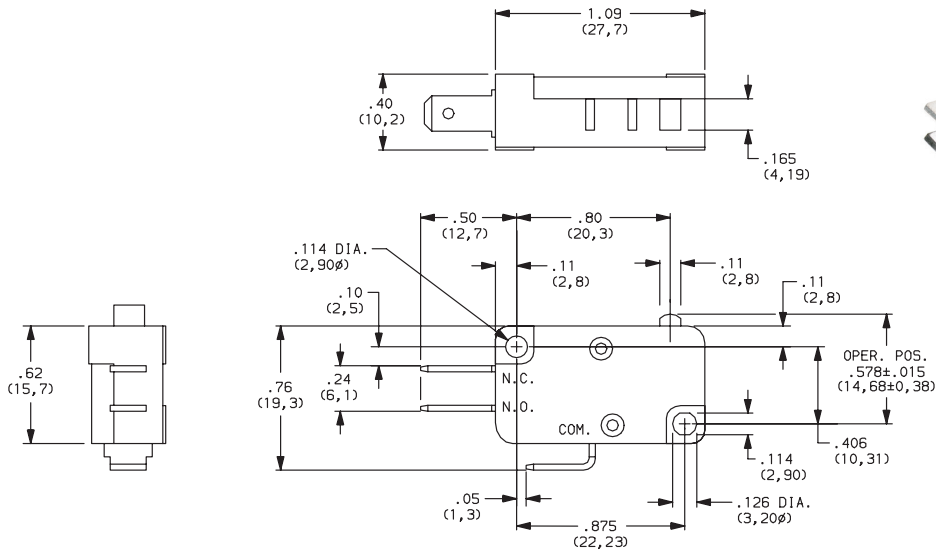
Dimensions are shown: Inch (mm)  
 Specifications and dimensions subject to change



# TM Series Miniature Snap-acting Switches

SERIES 

**TM** MINIATURE SNAP-ACTING SWITCHES – SP MOMENTARY



## OPERATING FORCE

OPTION CODE	BASIC SWITCH OPERATING FORCE (OZ./GRAMS)
<b>CG</b>	2.65 75
<b>CJ</b>	5.29 150
<b>CF</b>	1.76 50

Operating Force option 'CF' not available with 'T18, T27 and T28' actuator options. Operating force varies with actuator option, see ACTUATOR option section.

## ELECTRICAL RATING

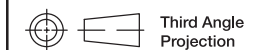
OPTION CODE	RoHS COMPLIANT*	RoHS COMPATIBLE*	CONTACT MATERIAL		ELECTRICAL RATING
			MOVABLE CONTACT	STATIONARY CONTACT	
<b>D6</b>	Yes	Yes	Fine Silver	Fine Silver	10 AMPS @ 125 & 250 V AC; 1/3 HP @ 125 & 250 V AC; 1/2 AMP @ 125 V DC; 1/4 AMP @ 250 V DC.
<b>F5</b>	Yes	Yes	Gold alloy	Gold alloy	From low level* to 1 AMP @ 125 V AC, 1 AMP @ 30 V DC.
<b>G6</b>	Yes	Yes	Fine Silver	Fine Silver	15 AMPS @ 125 & 250 V AC; 0.25 AMP @ 250 V DC; 0.5 AMP @ 125 V DC; 1/2 HP @ 125 & 250 V AC; 3 AMPS @ 125 V AC "L".
<b>H3</b>	Yes	Yes			5 AMPS @ 250 V AC; 1/6 HP @ 125 & 250 V AC.

\* Note: See Technical Data section of this catalog for RoHS compliant and compatible definitions and specifications.

\* All models 

Contact Customer Service Center for availability and delivery of nonstandard ratings.

\* Low Level=conditions where no arcing occurs during switching, i.e., 0.4 VA max. @ 20 V AC or DC max.



Third Angle Projection  
Dimensions are shown: Inches (mm)  
Specifications and dimensions subject to change



# TM Series Miniature Snap-acting Switches

## ELECTRICAL RATING

### AVAILABLE COMBINATIONS

ELECTRICAL RATING	MAXIMUM OPERATING FORCE (OZ./GRAMS)		
	1.76/50 CF	2.65/75 CG	5.29/150 CJ
D6	•	•	•
F5	•	•	•
G6	X	X	•
H3	•	•	•

• AVAILABLE  
X NOT AVAILABLE



\* All models 

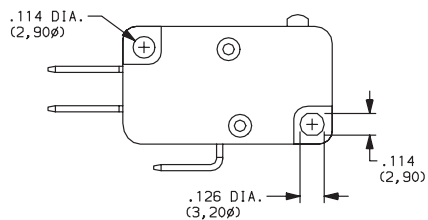
Contact Customer Service Center for availability and delivery of nonstandard ratings.

\* Low Level=conditions where no arcing occurs during switching, i.e., 0.4 VA max. @ 20 V AC or DC max.

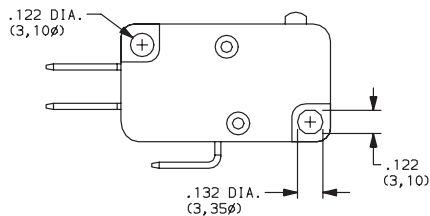
## MOUNTING STYLE

**S** Standard

**V** Metric



Recommended maximum screw size: 4-40.



Recommended maximum screw size: 3 mm.

**NOTE:** Torque mounting screws 2-5 in/lbs.

Snap-acting



Third Angle  
Projection

Dimensions are shown: Inch (mm)

Specifications and dimensions subject to change

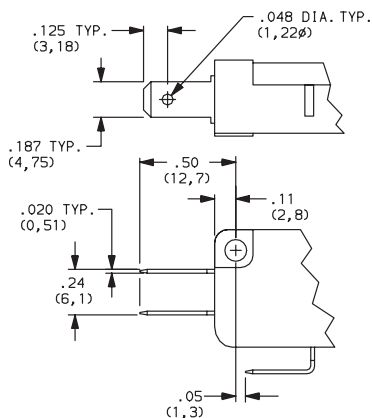




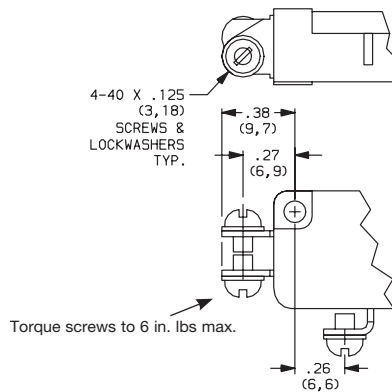


## TERMINATIONS

### 40 .187" QUICK CONNECT

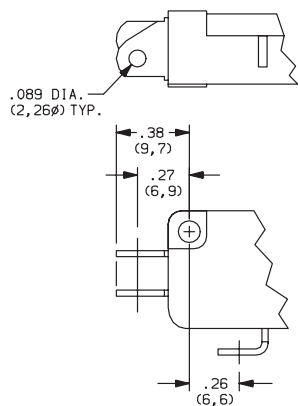


### 60 SCREW TERMINALS



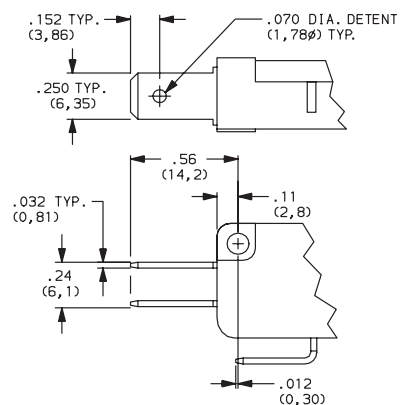
Not available with 'F5' rating option.

### 10 SOLDER



Not available with 'F5' rating option.

### 4A .250" QUICK CONNECT



Not available with 'F5' rating option.



Snap-acting

## CIRCUITRY

- C** SPDT (Single Pole, Double Throw)
- W** SPST N.C. (Single Pole, Single Throw, Normally Closed)
- Y** SPST N.O. (Single Pole, Single Throw, Normally Open)



Third Angle  
Projection

Dimensions are shown: Inches (mm)  
Specifications and dimensions subject to change

# Mouser Electronics

Authorized Distributor

Click to View Pricing, Inventory, Delivery & Lifecycle Information:

## C&K Switches:

[TMC GD6ST1840C](#) [TMC GD6ST2740C](#) [TMC GD6SA1540C](#) [TMC GD6ST1440C](#) [TMC GD6SA1040C](#)  
[TMC GD6SP004AC](#) [TMC GD6ST1540C](#) [TMC GD6SP0040W](#) [TMC GD6SP0040Y](#) [TMC GF5VP0040C](#)  
[TMC GD6SP0040C](#) [TMC JG6SP0040C](#) [TMC GD6SA1010C](#) [TMC GD6SA154AC](#) [TMC GD6ST174AC](#)  
[TMC GF5SP0040C](#) [TMC JD6ST1410Y](#) [TMC JG6SA2540C](#) [TMC JG6ST1040C](#) [TMC JG6ST1540C](#) [TMC JG6VT1640Y](#)  
[TMC JG6VT2810C](#) [TMC FD6SP0040W](#) [TMC GF5ST1040C](#) [TMC GD6ST2040C](#) [TMC GD6ST1040C](#) [TMC GD6SA2040C](#)  
[TMC JF5SP0040W](#) [TMC GF5SA1040C](#) [TMC FD6ST2510C](#) [TMC GF5SA2540C](#) [TMC GD6ST1540Y](#)  
[TMC JG6ST1440C](#) [TMC JG6SA1040C](#) [TMC JG6ST1540Y](#) [TMC GF5ST1540Y](#) [TMC JG6SA1010C](#) [TMC FF5ST1440C](#)  
[TMC FD6SA1040C](#) [TMC JG6SP004AC](#) [TMC GF5ST1440C](#) [TMC JG6SA1040W](#) [TMC JD6SA1540C](#) [TMC JG6ST2440W](#)  
[TMC JF5ST1540C](#) [TMC GD6VP004AC](#) [TMC JD6ST1640Y](#) [TMC FD6SA2040C](#) [TMC JD6ST1540C](#) [TMC JG6ST1840Y](#)  
[TMC JD6SP0040C](#) [TMC FD6ST1040C](#) [TMC FD6SP0040Y](#) [TMC JG6VP0040Y](#) [TMC GD6SP004AY](#) [TMC JG6ST1560C](#)  
[TMC JD6VP0040C](#) [TMC FH3ST204AC](#) [TMC JH3SP0040W](#) [TMC GD6VT1410C](#) [TMC JG6ST1340C](#)  
[TMC GF5VT2440C](#) [TMC JD6VP0010C](#) [TMC GD6ST1640C](#) [TMC GH3ST1640C](#) [TMC JF5SP0040C](#) [TMC JG6ST1010C](#)  
[TMC GD6VA1040Y](#) [TMC JG6SA1540W](#) [TMC GF5SA1540C](#) [TMC GD6ST2440C](#) [TMC FF5SP0040Y](#) [TMC JH3SP0040Y](#)  
[TMC GD6VT2040Y](#) [TMC GD6VT1040Y](#) [TMC GD6SA104AC](#) [TMC JG6ST1510C](#) [TMC GF5ST1740Y](#)  
[TMC GD6SA2510Y](#) [TMC FD6ST1540C](#) [TMC GD6ST154AC](#) [TMC JG6ST2540Y](#) [TMC JG6VA1540C](#) [TMC GD6ST2540C](#)  
[TMC JG6SP0040W](#) [TMC FF5ST1540C](#) [TMC JG6SA1540C](#) [TMC JF5ST1440C](#) [TMC JD6ST2840C](#) [TMC GD6ST254AC](#)  
[TMC JG6ST1040W](#) [TMC FD6SP0040C](#) [TMC JG6SA1040Y](#) [TMC GD6ST1340C](#) [TMC GF5SP0040Y](#)  
[TMC GD6SA2540C](#) [TMC GD6ST2340C](#) [TMC FF5SA2040Y](#) [TMC JD6ST1440C](#) [TMC JG6VT2010C](#)