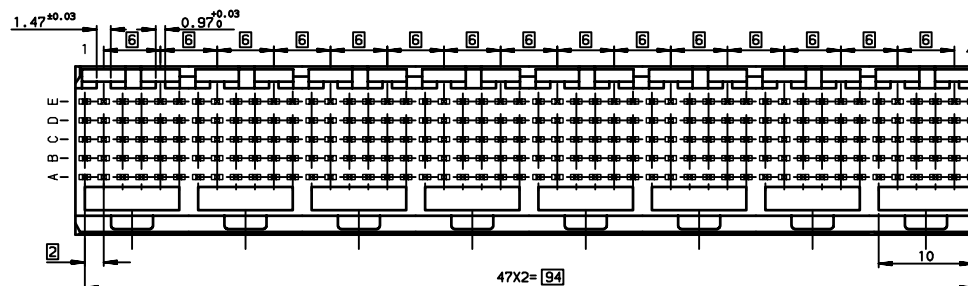
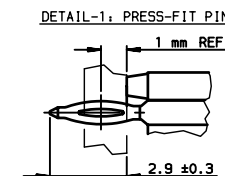
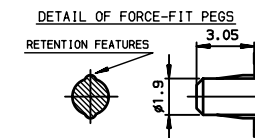
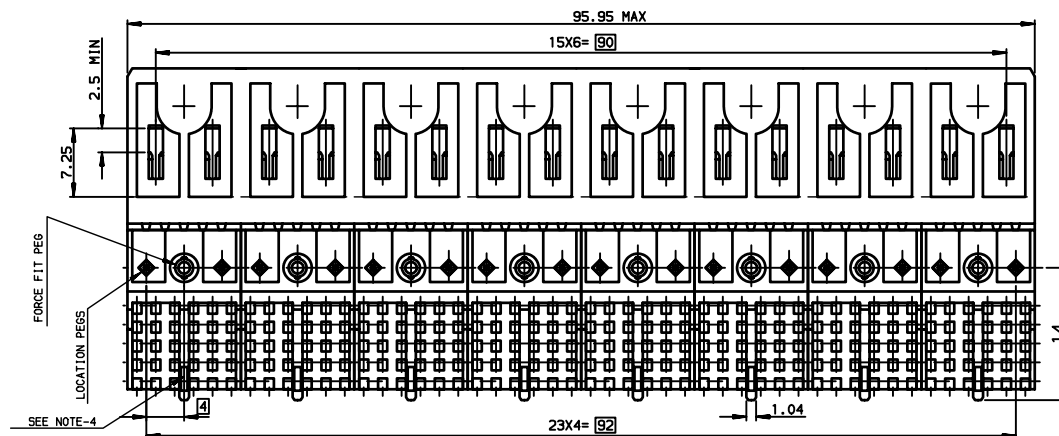


Hole according to product spec  
GS-12-445 (for press-fit) ,  
GS-12-446 (for STB)



## TIN LEAD PART NUMBER

Part Number: HM1L54xDP000H6					
MATING LENGTH DIM-P / REPLACE 'x' BY:					
	ROW-A	ROW-B	ROW-C	ROW-D	ROW-E
A =	5.00	5.00	5.00	5.00	5.00
L =	5.75	5.75	5.75	5.75	5.75
D =	6.50	6.50	6.50	6.50	6.50
B =	6.50	5.00	5.00	5.00	5.00
C =	6.50	5.75	5.75	6.50	5.75

## LEAD-FREE PART NUMBER

Part Number: HM1L54xDP000H6LF					
MATING LENGTH DIM-P / REPLACE 'x' BY:					
	ROW-A	ROW-B	ROW-C	ROW-D	ROW-E
A =	5.00	5.00	5.00	5.00	5.00
L =	5.75	5.75	5.75	5.75	5.75
D =	6.50	6.50	6.50	6.50	6.50
B =	6.50	5.00	5.00	5.00	5.00
C =	6.50	5.75	5.75	6.50	5.75

**GENERAL CHARACTERISTICS AND ROHS INFORMATIONS:**

SEE PRODUCT SPECIFICATION GS-12-445

NOTE-2: FLAT ROCK INSERTION TOOLING, ON ALL THIS SURFACE




NOTE-3: EYE OF THE NEEDLE PRESS FIT PIN TYPE

NOTE-4: REAR CENTRAL SUPPORT FOR BETTER ASSY ON PCB

NOTE-5: IF SUFFIX "P" IS ADDED IN P/N PACKAGING IS IN TRAYS  
BUT CONNECTOR MARKING IS WITHOUT "P"

EXAMPLE: HM1XXXXXXXXXH6P, MARKED HM1XXXXXXXXXXH6

rev	ecn no	dr	date
G	-	MAS	2000/08/2
H	LS05-004	MLE	2005/02/1
J	LS06-0097	LGO	2006/07/2
K	LS07-0184	MLE	2007/07/2
-	-	-	-
-	-	-	-
-	-	-	-

www.fciconnect.com		surface <input checked="" type="checkbox"/> tolerance std		projection	
		ISO 1302		ISO 406 ISO 1101	
		TOLERANCES UNLESS OTHERWISE SPECIFIED		  mm	
Dr	ETIEMBRE	20/06/18	ANGULAR	0.X	± 0.1
Eng	LENOIR	1997/01/13	LINEAR	0.XX	± 0.1
Chr	LEGARE	1997/01/13	0.XX ± 2	0.XXX	± 0.1
Appr	LEGARE	1997/01/13	Product family	METRAL	Spec ref -
			METRAL RA HEADER 5 ROW		Rev
title STANDARD PRESS-FIT 240 WAY			dwg no C-8626-0238-1		K
catalog no -			CUSTOMER		sheet 1 of 1

**PDM: Rev:K**

STATUS: **Released**

Printed: May 19, 2011

# Mouser Electronics

Authorized Distributor

Click to View Pricing, Inventory, Delivery & Lifecycle Information:

[FCI / Amphenol:](#)

[HM1L54ADP000H6PLF](#) [HM1L54DDP000H6PLF](#) [HM1L54LDP000H6PLF](#)