

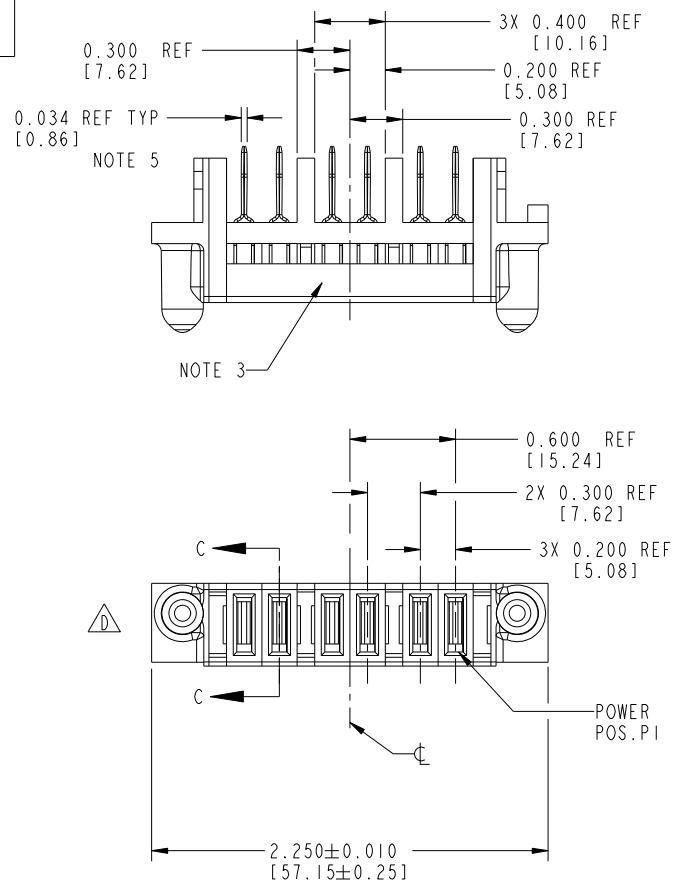


All rights strictly reserved. Reproduction or issue to third parties in any form whatever is not permitted without written authority from the proprietor. Property of FCI. Copyright FCI.

Tous droits strictement réservés. Reproduction ou communication à des tiers interdite sous quelque forme que ce soit sans autorisation écrite du propriétaire. Propriété de c FCI. Droits de reproduction FCI.

CODE	DIM "M" ±0.010 [0.25]	TERMINATION AREA ±0.010 [0.25]	CONTACT TYPE
PG	0.042 [1.07]	0.393 [9.98]	POWER
PH	0.092 [2.34]	0.393 [9.98]	POWER

PRODUCT NUMBER
51871-005_--
NOTE: ③



mat'l code				NOTE 1		tolerances unless otherwise specified		CUSTOMER		FCI		www.fciconnect.com	
ltr	ecn no.	dr	date					COPY					
A	V03-0360	MEM	3/27/03	linear		.XX±.01/0.X±0.3		projection		title	6P RIGHT ANGLE CABLE RECEPTACLE		
B	DG05-0216	SJ	07/11/05			.XXX±.005/0.XX±0.13				product family	PwrBlade	code	213
C	DG08-0251	W D	09/16/08	angles		.XXX±.0020/0.XXX±0.050				size	dwg no	sheet	1 of 2
D	DG09-0116	W D	04/13/09			0°±2°				scale	1:1		
				dr	M. MOSTOLLER	3/27/03							
				enrg	H. BREWBAKER	3/27/03							
				chr	H. BREWBAKER	3/27/03							
				appd	M. MOSTOLLER	3/27/03							
sheet index	revision	D	D										
	sheet	I	2										

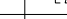

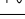
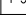


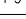


Pro/E

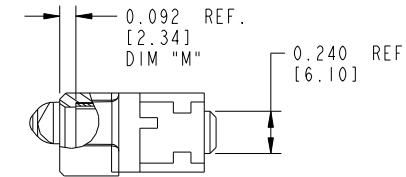
cage code 22526



All rights strictly reserved. Reproduction or issue to third parties in any form whatever is not permitted without written authority from the proprietor. Property of FCI. Copyright FCI.

Tous droits strictement reserves. Reproduction ou communication a des tiers interdite sous quelque forme que ce soit sans autorisation ecrite du proprietaire. Propriete de c FCI. Droits de reproduction FCI.

PRODUCT No.	ROWS	POWER								E I
		E 2	P 6	P 5	P 4	P 3	P 2	P 1		
51871-005-- NOTE: ③	D C B A									



PARTIAL SECTION C-C

CONNECTOR NOTES:

- HOUSING MATERIAL: UL 94 V-0 GLASS FILLED HIGH TEMP THERMOPLASTIC
POWER CONTACT MATERIAL: COPPER ALLOY
- SEE ITEM 5 & 6 IN PRINT 10064183 FOR PLATING SPEC OF 51871-005 AND 51871-005LF RESPECTIVELY.
- "MANUFACTURER'S" NAME, P/N, AND DATE CODE TO APPEAR ON THIS SURFACE
- PRODUCT SPECIFICATION GS-12-149
- TERMINATE WITH INDUSTRY STANDARD FEMALE .250 INCH QUICK DISCONNECT TERMINAL CAPABLE OF MATING TO A STANDARD .032 INCH THICK X .250 INCH WIDE MALE TAB TERMINAL.
- A SYMBOL WILL BE NEXT TO ANY DIMENSION, VIEW, OR NOTE WHICH HAS BEEN MODIFIED WITH THE CURRENT DRAWING REVISION.

mat'l code				NOTE 1		tolerances unless otherwise specified		CUSTOMER		FCI		www.fciconnect.com	
ltr	ecn no.	dr	date					COPY					
D						linear	.XX±.01/0.X±0.3	projection		title	6P RIGHT ANGLE CABLE RECEPTACLE		
							.XXX±.005/0.XX±0.13						
						angles	.XXX±.0020/0.XXX±0.050						
							0°±2°						
						dr	M. MOSTOLLER 3/27/03	INCH/MM		product family	PwrBlade	code	213
						engr	M. MOSTOLLER 3/27/03	scale		size	dwg no	sheet	2
						chr	H. BREWBAKER 3/27/03	1:1		A	51871-005		
						appd	M. MOSTOLLER 3/27/03						
sheet index	revision sheet												

Pro/E

cage code 22526

Mouser Electronics

Authorized Distributor

Click to View Pricing, Inventory, Delivery & Lifecycle Information:

[FCI / Amphenol:](#)

[51871-004LF](#) [51871-005LF](#) [51871-001LF](#)