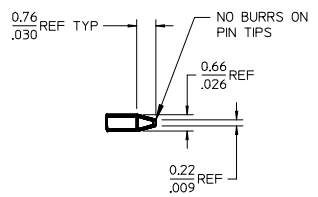
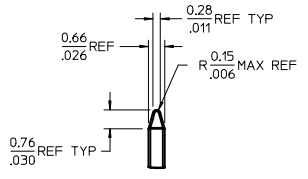


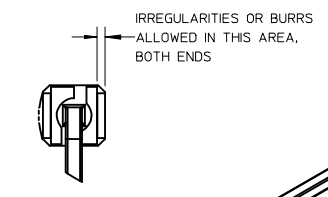
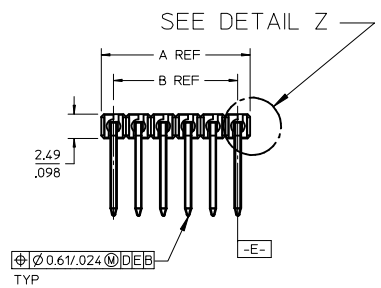
NO. CKTS	DIM. A	DIM. B
2	5.08	2.54
3	7.62	5.08
4	10.16	7.62
5	12.70	10.16
6	15.24	12.70
7	17.78	15.24
8	20.32	17.78
9	22.86	20.32
10	25.40	22.86
11	27.94	25.40
12	30.48	27.94
13	33.02	30.48
14	35.56	33.02
15	38.10	35.56
16	40.64	38.10
17	43.18	40.64
18	45.72	43.18
19	48.26	45.72
20	50.80	48.26
21	53.34	50.80
22	55.88	53.34
23	58.42	55.88
24	60.96	58.42
25	63.50	60.96
26	66.04	63.50
27	68.58	66.04
28	71.12	68.58
29	73.66	71.12
30	76.20	73.66
31	78.74	76.20
32	81.28	78.74
33	83.82	81.28
34	86.36	83.82
35	88.90	86.36
36	91.44	88.90



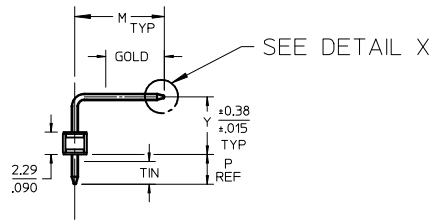
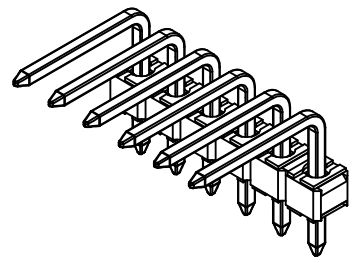
DETAIL X
SCALE 5:1
SEE NOTE 10



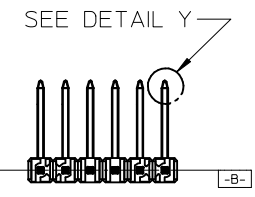
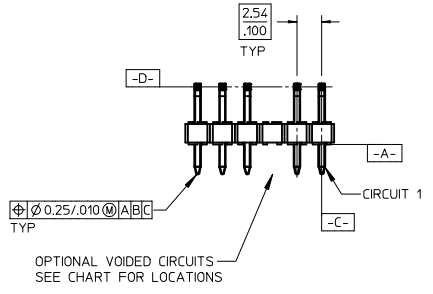
DETAIL Y
SCALE 5:1
SEE NOTE 10



DETAIL Z
SCALE 5:1

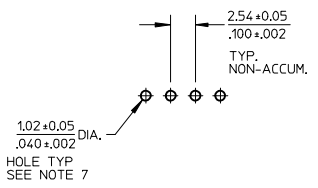


OPTIONAL KINK PIN
SEE NOTE 7



- NOTES:
- MATERIAL: GLASS FILLED NYLON UL94V-0, COLOR: BLACK
 - FINISH: (154) OVERALL TIN: 0.00254/.000100 MIN. OVER NICKEL: 0.00127/.000050 MIN. (197) OVERALL REFLOWED MATTE TIN: 0.00152/.000060 MIN. OVER 0.00127/.000050 MIN. NICKEL OVERALL. (208) SELECT GOLD: 0.00038/.000015 MIN. SELECT TIN: 0.00254/.000100 MIN. WITH OVERALL NICKEL UNDERPLATE: 0.00127/.000050 MIN. (228) SELECT GOLD: 0.00076/.000030 MIN. SELECT TIN: 0.00254/.000100 MIN. WITH OVERALL NICKEL UNDERPLATE: 0.00127/.000050 MIN.
 - PRODUCT SPECIFICATION: PS 10-07.
 - PACKAGING INFORMATION: SEE TABLES
 - SOLDERABILITY PER SMES-152.
 - PIN PUSH OUT FORCE: 3 LBS. MIN
 - KINK PIN OPTION NOT RECOMMENDED FOR 2 CIRCUIT PARTS. HOLE SIZE MAY NEED TO BE ADJUSTED FOR 2 CIRCUIT PARTS WITH KINK OPTION FOR PROPER INSERTION INTO THE PCB. SEE SMES-42003 FOR ADDITIONAL INFORMATION ON KINK PIN DIRECTION AND PLACEMENT.
 - HEADERS ARE NOT STACKABLE ON 2.54/.100 CENTERS.
 - PARTS CONFORM TO CLASS B REQUIREMENTS OF COSMETIC SPECIFICATION PS-45499-002.
 - PIN TIP DIMENSIONS ARE SHOWN FOR REFERENCE ONLY. DIMENSIONS APPLY PRIOR TO PLATING OR ASSEMBLY.

2-*	K17
1	K17
SHT	REV



PCB LAYOUT: COMPONENT SIDE
PCB THICKNESS: 1.571.062

ADD 42376-0894 EC NO: UCP2015-5319 DRW:MKIPPER 2015/06/16 CHKD:NGUYEN 2015/06/16 APPR:FSMITH 2015/08/31	QUALITY SYMBOLS $\nabla F=0$ $\nabla E=0$ $\nabla E=0$	GENERAL TOLERANCES (UNLESS SPECIFIED)		DIMENSION STYLE MM/IN		SCALE 2:1	DESIGN UNITS INCH	THIRD ANGLE PROJECTION			
		4 PLACES ± --- ± ---	3 PLACES ± --- ± .010	DRAWN BY JSCHAFFER	DATE 11/24/03	TITLE KK 100 HEADER ASSEMBLY FLAT RIGHT ANGLE BREAKAWAY					
		2 PLACES ± 0.25 ± .015	1 PLACE ± 0.38 ± ---	CHECKED BY SAMIEC	DATE 11/26/03	molex					
		0 PLACE ± ±	APPROVED BY MARGULIS		DATE 12/7/03	MATERIAL NO. SEE CHART		DOCUMENT NO. SD-42376-001	SHEET NO. 1 OF *		
DRAFT WHERE APPLICABLE MUST REMAIN WITHIN DIMENSIONS		SIZE B		THIS DRAWING CONTAINS INFORMATION THAT IS PROPRIETARY TO MOLEX INCORPORATED AND SHOULD NOT BE USED WITHOUT WRITTEN PERMISSION							

A-42376-0002 / 0036						A-42376-0037 / 0071					
HEADER NUMBER:		42312-0002/0036				HEADER NUMBER:		42312-0002/0036			
PIN NUMBER:		42663-BKA154				PIN NUMBER:		42663-BKB208			
PIN LENGTH: L		.600/15.24				PIN LENGTH: L		.600/15.24			
MATING LENGTH: M		.361/9.17				MATING LENGTH: M		.361/9.17			
GOLD POINT: G		N/A				GOLD POINT: G		.180/4.57			
PIN HEIGHT: Y		.142/3.61				PIN HEIGHT: Y		.142/3.61			
PC TAIL LENGTH: P		.120/3.05				PC TAIL LENGTH: P		.120/3.05			
TIN: T		OVERALL				TIN: T		.135/3.43			
CKTS:		2-36				CKTS:		2-36			
KINKS:		NONE				KINKS:		NONE			
VOIDED CKTS:		NONE				VOIDED CKTS:		NONE			
PACKAGING:		BULK PK-40873-0041				PACKAGING:		BULK PK-40873-0041			
CKTS	MATERIAL NUMBER	ENG NUMBER	CKTS	MATERIAL NUMBER	ENG NUMBER	CKTS	MATERIAL NUMBER	ENG NUMBER	CKTS	MATERIAL NUMBER	ENG NUMBER
02	22-28-6020	42376-0002	20	22-28-6200	42376-0020	02	22-28-6022	42376-0037	20	22-28-6202	42376-0055
03	22-28-6030	42376-0003	21	22-28-6210	42376-0021	03	22-28-6032	42376-0038	21	22-28-6212	42376-0056
04	22-28-6040	42376-0004	22	22-28-6220	42376-0022	04	22-28-6042	42376-0039	22	22-28-6222	42376-0057
05	22-28-6050	42376-0005	23	22-28-6230	42376-0023	05	22-28-6052	42376-0040	23	22-28-6232	42376-0058
06	22-28-6060	42376-0006	24	22-28-6240	42376-0024	06	22-28-6062	42376-0041	24	22-28-6242	42376-0059
07	22-28-6070	42376-0007	25	22-28-6250	42376-0025	07	22-28-6072	42376-0042	25	22-28-6252	42376-0060
08	22-28-6080	42376-0008	26	22-28-6260	42376-0026	08	22-28-6082	42376-0043	26	22-28-6262	42376-0061
09	22-28-6090	42376-0009	27	22-28-6270	42376-0027	09	22-28-6092	42376-0044	27	22-28-6272	42376-0062
10	22-28-6100	42376-0010	28	22-28-6280	42376-0028	10	22-28-6102	42376-0045	28	22-28-6282	42376-0063
11	22-28-6110	42376-0011	29	22-28-6290	42376-0029	11	22-28-6112	42376-0046	29	22-28-6292	42376-0064
12	22-28-6120	42376-0012	30	22-28-6300	42376-0030	12	22-28-6122	42376-0047	30	22-28-6302	42376-0065
13	22-28-6130	42376-0013	31	22-28-6310	42376-0031	13	22-28-6132	42376-0048	31	22-28-6312	42376-0066
14	22-28-6140	42376-0014	32	22-28-6320	42376-0032	14	22-28-6142	42376-0049	32	22-28-6322	42376-0067
15	22-28-6150	42376-0015	33	22-28-6330	42376-0033	15	22-28-6152	42376-0050	33	22-28-6332	42376-0068
16	22-28-6160	42376-0016	34	22-28-6340	42376-0034	16	22-28-6162	42376-0051	34	22-28-6342	42376-0069
17	22-28-6170	42376-0017	35	22-28-6350	42376-0035	17	22-28-6172	42376-0052	35	22-28-6352	42376-0070
18	22-28-6180	42376-0018	36	22-28-6360	42376-0036	18	22-28-6182	42376-0053	36	22-28-6362	42376-0071
19	22-28-6190	42376-0019				19	22-28-6192	42376-0054			

REV: K17	ECR / ECN INFORMATION: EC No.: UCP2015-5319 DATE: 9/3/2015	TITLE: KK 100 HEADER ASSEMBLY FLAT RIGHT ANGLE BREAKAWAY	SHEET No. - 2 -
DOCUMENT NUMBER: SD- 42376-001		CREATED / REVISED BY: MKIPPER	CHECKED BY: NNGUYEN
		APPROVED BY: FSMITH	

A-42376-0072 / 0106						A-42376-0107 / 0141					
HEADER NUMBER:		42312-0002/0036				HEADER NUMBER:		42312-0002/0036			
PIN NUMBER:		42663-BKB228				PIN NUMBER:		42663-CXA154			
PIN LENGTH: L		.600/15.24				PIN LENGTH: L		.750/19.05			
MATING LENGTH: M		.361/9.17				MATING LENGTH: M		.405/10.29			
GOLD POINT: G		.180/4.57				GOLD POINT: G		N/A			
PIN HEIGHT: Y		.142/3.61				PIN HEIGHT: Y		.248/6.30			
PC TAIL LENGTH: P		.120/3.05				PC TAIL LENGTH: P		.120/3.05			
TIN: T		.135/3.43				TIN: T		OVERALL			
CKTS:		2-36				CKTS:		2-36			
KINKS:		NONE				KINKS:		NONE			
VOIDED CKTS:		NONE				VOIDED CKTS:		NONE			
PACKAGING:		BULK PK-40873-0041				PACKAGING:		BULK PK-40873-0043			
CKTS	MATERIAL NUMBER	ENG NUMBER	CKTS	MATERIAL NUMBER	ENG NUMBER	CKTS	MATERIAL NUMBER	ENG NUMBER	CKTS	MATERIAL NUMBER	ENG NUMBER
02	22-28-6024	42376-0072	20	22-28-6204	42376-0090	20	22-28-6021	42376-0107	20	22-28-6201	42376-0125
03	22-28-6034	42376-0073	21	22-28-6214	42376-0091	21	22-28-6031	42376-0108	21	22-28-6211	42376-0126
04	22-28-6044	42376-0074	22	22-28-6224	42376-0092	22	22-28-6041	42376-0109	22	22-28-6221	42376-0127
05	22-28-6054	42376-0075	23	22-28-6234	42376-0093	23	22-28-6051	42376-0110	23	22-28-6231	42376-0128
06	22-28-6064	42376-0076	24	22-28-6244	42376-0094	24	22-28-6061	42376-0111	24	22-28-6241	42376-0129
07	22-28-6074	42376-0077	25	22-28-6254	42376-0095	25	22-28-6071	42376-0112	25	22-28-6251	42376-0130
08	22-28-6084	42376-0078	26	22-28-6264	42376-0096	26	22-28-6081	42376-0113	26	22-28-6261	42376-0131
09	22-28-6094	42376-0079	27	22-28-6274	42376-0097	27	22-28-6091	42376-0114	27	22-28-6271	42376-0132
10	22-28-6104	42376-0080	28	22-28-6284	42376-0098	28	22-28-6101	42376-0015	28	22-28-6281	42376-0133
11	22-28-6114	42376-0081	29	22-28-6294	42376-0099	29	22-28-6111	42376-0116	29	22-28-6291	42376-0134
12	22-28-6124	42376-0082	30	22-28-6304	42376-0100	30	22-28-6121	42376-0117	30	22-28-6301	42376-0135
13	22-28-6134	42376-0083	31	22-28-6314	42376-0101	31	22-28-6131	42376-0118	31	22-28-6311	42376-0136
14	22-28-6144	42376-0084	32	22-28-6324	42376-0102	32	22-28-6141	42376-0119	32	22-28-6321	42376-0137
15	22-28-6154	42376-0085	33	22-28-6334	42376-0103	33	22-28-6151	42376-0120	33	22-28-6331	42376-0138
16	22-28-6164	42376-0086	34	22-28-6344	42376-0104	34	22-28-6161	42376-0121	34	22-28-6341	42376-0139
17	22-28-6174	42376-0087	35	22-28-6354	42376-0105	35	22-28-6171	42376-0122	35	22-28-6351	42376-0140
18	22-28-6184	42376-0088	36	22-28-6364	42376-0106	36	22-28-6181	42376-0123	36	22-28-6361	42376-0141
19	22-28-6194	42376-0089				19	22-28-6191	42376-0124			

REV: K17	ECR / ECN INFORMATION: EC No.: UCP2015-5319 DATE: 9/3/2015	TITLE: KK 100 HEADER ASSEMBLY FLAT RIGHT ANGLE BREAKAWAY	SHEET No. - 3 -
DOCUMENT NUMBER: SD- 42376-001		CREATED / REVISED BY: MKIPPER	CHECKED BY: NNGUYEN
		APPROVED BY: FSMITH	

A-42376-0142 / 0176					
HEADER NUMBER:		42312-0002/0036			
PIN NUMBER:		42663-CXB208			
PIN LENGTH: L		.750/19.05			
MATING LENGTH: M		.405/10.29			
GOLD POINT: G		.180/4.57			
PIN HEIGHT: Y		.248/6.30			
PC TAIL LENGTH: P		.120/3.05			
TIN: T		.135/3.43			
CKTS:		2-36			
KINKS:		NONE			
VOIDED CKTS:		NONE			
PACKAGING:		BULK PK-40873-0043			
CKTS	MATERIAL NUMBER	ENG NUMBER	CKTS	MATERIAL NUMBER	ENG NUMBER
02	22-28-6023	42376-0142	20	22-28-6203	42376-0160
03	22-28-6033	42376-0143	21	22-28-6213	42376-0161
04	22-28-6043	42376-0144	22	22-28-6223	42376-0162
05	22-28-6053	42376-0145	23	22-28-6233	42376-0163
06	22-28-6063	42376-0146	24	22-28-6243	42376-0164
07	22-28-6073	42376-0147	25	22-28-6253	42376-0165
08	22-28-6083	42376-0148	26	22-28-6263	42376-0166
09	22-28-6093	42376-0149	27	22-28-6273	42376-0167
10	22-28-6103	42376-0150	28	22-28-6283	42376-0168
11	22-28-6113	42376-0151	29	22-28-6293	42376-0169
12	22-28-6123	42376-0152	30	22-28-6303	42376-0170
13	22-28-6133	42376-0153	31	22-28-6313	42376-0171
14	22-28-6143	42376-0154	32	22-28-6323	42376-0172
15	22-28-6153	42376-0155	33	22-28-6333	42376-0173
16	22-28-6163	42376-0156	34	22-28-6343	42376-0174
17	22-28-6173	42376-0157	35	22-28-6353	42376-0175
18	22-28-6183	42376-0158	36	22-28-6363	42376-0176
19	22-28-6193	42376-0159			

A-42376-0177 / 0211					
HEADER NUMBER:		42312-0002/0036			
PIN NUMBER:		42663-CXB228			
PIN LENGTH: L		.750/19.05			
MATING LENGTH: M		.405/10.29			
GOLD POINT: G		.180/4.57			
PIN HEIGHT: Y		.248/6.30			
PC TAIL LENGTH: P		.120/3.05			
TIN: T		.135/3.43			
CKTS:		2-36			
KINKS:		NONE			
VOIDED CKTS:		NONE			
PACKAGING:		BULK PK-40873-0043			
CKTS	MATERIAL NUMBER	ENG NUMBER	CKTS	MATERIAL NUMBER	ENG NUMBER
02	22-28-6025	42376-0177	20	22-28-6205	42376-0195
03	22-28-6035	42376-0178	21	22-28-6215	42376-0196
04	22-28-6045	42376-0179	22	22-28-6225	42376-0197
05	22-28-6055	42376-0180	23	22-28-6235	42376-0198
06	22-28-6065	42376-0181	24	22-28-6245	42376-0199
07	22-28-6075	42376-0182	25	22-28-6255	42376-0200
08	22-28-6085	42376-0183	26	22-28-6265	42376-0201
09	22-28-6095	42376-0184	27	22-28-6275	42376-0202
10	22-28-6105	42376-0185	28	22-28-6285	42376-0203
11	22-28-6115	42376-0186	29	22-28-6295	42376-0204
12	22-28-6125	42376-0187	30	22-28-6305	42376-0205
13	22-28-6135	42376-0188	31	22-28-6315	42376-0206
14	22-28-6145	42376-0189	32	22-28-6325	42376-0207
15	22-28-6155	42376-0190	33	22-28-6335	42376-0208
16	22-28-6165	42376-0191	34	22-28-6345	42376-0209
17	22-28-6175	42376-0192	35	22-28-6355	42376-0210
18	22-28-6185	42376-0193	36	22-28-6365	42376-0211
19	22-28-6195	42376-0194			

REV:	ECR / ECN INFORMATION:	TITLE:	SHEET No.
K17	EC No.: UCP2015-5319 DATE: 9/3/2015	KK 100 HEADER ASSEMBLY FLAT RIGHT ANGLE BREAKAWAY	- 4 -
DOCUMENT NUMBER:	CREATED / REVISED BY:	CHECKED BY:	APPROVED BY:
SD- 42376-001	MKIPPER	NNGUYEN	FSMITH

A-42376-0212 / 0246						A-42376-0247 / 0281					
HEADER NUMBER:		42312-0002/0036				HEADER NUMBER:		42312-0002/0036			
PIN NUMBER:		42663-BNA154				PIN NUMBER:		42663-BNB208			
PIN LENGTH: L		.615/15.62				PIN LENGTH: L		.615/15.62			
MATING LENGTH: M		.361/9.17				MATING LENGTH: M		.361/9.17			
GOLD POINT: G		N/A				GOLD POINT: G		.180/4.57			
PIN HEIGHT: Y		.142/3.61				PIN HEIGHT: Y		.142/3.61			
PC TAIL LENGTH: P		.135/3.43				PC TAIL LENGTH: P		.135/3.43			
TIN: T		OVERALL				TIN: T		.135/3.43			
CKTS:		2-36				CKTS:		2-36			
KINKS:		PER SMES-42003				KINKS:		PER SMES-42003			
VOIDED CKTS:		NONE				VOIDED CKTS:		NONE			
PACKAGING:		BULK PK-40873-0041				PACKAGING:		BULK PK-40873-0041			
CKTS	MATERIAL NUMBER	ENG NUMBER	CKTS	MATERIAL NUMBER	ENG NUMBER	CKTS	MATERIAL NUMBER	ENG NUMBER	CKTS	MATERIAL NUMBER	ENG NUMBER
02	22-28-7020	42376-0212	20	22-28-7200	42376-0230	02	22-28-7022	42376-0247	20	22-28-7202	42376-0265
03	22-28-7030	42376-0213	21	22-28-7210	42376-0231	03	22-28-7032	42376-0248	21	22-28-7212	42376-0266
04	22-28-7040	42376-0214	22	22-28-7220	42376-0232	04	22-28-7042	42376-0249	22	22-28-7222	42376-0267
05	22-28-7050	42376-0215	23	22-28-7230	42376-0233	05	22-28-7052	42376-0250	23	22-28-7232	42376-0268
06	22-28-7060	42376-0216	24	22-28-7240	42376-0234	06	22-28-7062	42376-0251	24	22-28-7242	42376-0269
07	22-28-7070	42376-0217	25	22-28-7250	42376-0235	07	22-28-7072	42376-0252	25	22-28-7252	42376-0270
08	22-28-7080	42376-0218	26	22-28-7260	42376-0236	08	22-28-7082	42376-0253	26	22-28-7262	42376-0271
09	22-28-7090	42376-0219	27	22-28-7270	42376-0237	09	22-28-7092	42376-0254	27	22-28-7272	42376-0272
10	22-28-7100	42376-0220	28	22-28-7280	42376-0238	10	22-28-7102	42376-0255	28	22-28-7282	42376-0273
11	22-28-7110	42376-0221	29	22-28-7290	42376-0239	11	22-28-7112	42376-0256	29	22-28-7292	42376-0274
12	22-28-7120	42376-0222	30	22-28-7300	42376-0240	12	22-28-7122	42376-0257	30	22-28-7302	42376-0275
13	22-28-7130	42376-0223	31	22-28-7310	42376-0241	13	22-28-7132	42376-0258	31	22-28-7312	42376-0276
14	22-28-7140	42376-0224	32	22-28-7320	42376-0242	14	22-28-7142	42376-0259	32	22-28-7322	42376-0277
15	22-28-7150	42376-0225	33	22-28-7330	42376-0243	15	22-28-7152	42376-0260	33	22-28-7332	42376-0278
16	22-28-7160	42376-0226	34	22-28-7340	42376-0244	16	22-28-7162	42376-0261	34	22-28-7342	42376-0279
17	22-28-7170	42376-0227	35	22-28-7350	42376-0245	17	22-28-7172	42376-0262	35	22-28-7352	42376-0280
18	22-28-7180	42376-0228	36	22-28-7360	42376-0246	18	22-28-7182	42376-0263	36	22-28-7362	42376-0281
19	22-28-7190	42376-0229				19	22-28-7192	42376-0264			

REV: K17	ECR / ECN INFORMATION: EC No.: UCP2015-5319 DATE: 9/3/2015	TITLE: KK 100 HEADER ASSEMBLY FLAT RIGHT ANGLE BREAKAWAY	SHEET No. - 5 -
DOCUMENT NUMBER: SD- 42376-001		CREATED / REVISED BY: MKIPPER	CHECKED BY: NNGUYEN
		APPROVED BY: FSMITH	

A-42376-0282/ 0316					
HEADER NUMBER:		42312-0002/0036			
PIN NUMBER:		42663-BNB228			
PIN LENGTH: L		.615/15.62			
MATING LENGTH: M		.361/9.17			
GOLD POINT: G		.180/4.57			
PIN HEIGHT: Y		.142/3.61			
PC TAIL LENGTH: P		.135/3.43			
TIN: T		.135/3.43			
CKTS:		2-36			
KINKS:		PER SMES-42003			
VOIDED CKTS:		NONE			
PACKAGING:		BULK PK-40873-0041			
CKTS	MATERIAL NUMBER	ENG NUMBER	CKTS	MATERIAL NUMBER	ENG NUMBER
02	22-28-7024	42376-0282	20	22-28-7204	42376-0300
03	22-28-7034	42376-0283	21	22-28-7214	42376-0301
04	22-28-7044	42376-0284	22	22-28-7224	42376-0302
05	22-28-7054	42376-0285	23	22-28-7234	42376-0303
06	22-28-7064	42376-0286	24	22-28-7244	42376-0304
07	22-28-7074	42376-0287	25	22-28-7254	42376-0305
08	22-28-7084	42376-0288	26	22-28-7264	42376-0306
09	22-28-7094	42376-0289	27	22-28-7274	42376-0307
10	22-28-7104	42376-0290	28	22-28-7284	42376-0308
11	22-28-7114	42376-0291	29	22-28-7294	42376-0309
12	22-28-7124	42376-0292	30	22-28-7304	42376-0310
13	22-28-7134	42376-0293	31	22-28-7314	42376-0311
14	22-28-7144	42376-0294	32	22-28-7324	42376-0312
15	22-28-7154	42376-0295	33	22-28-7334	42376-0313
16	22-28-7164	42376-0296	34	22-28-7344	42376-0314
17	22-28-7174	42376-0297	35	22-28-7354	42376-0315
18	22-28-7184	42376-0298	36	22-28-7364	42376-0316
19	22-28-7194	42376-0299			

A-42376-0317 / 0351					
HEADER NUMBER:		42312-0002/0036			
PIN NUMBER:		42663-DAA154			
PIN LENGTH: L		.765/19.43			
MATING LENGTH: M		.405/10.29			
GOLD POINT: G		N/A			
PIN HEIGHT: Y		.248/6.30			
PC TAIL LENGTH: P		.135/3.43			
TIN: T		OVERALL			
CKTS:		2-36			
KINKS:		PER SMES-42003			
VOIDED CKTS:		NONE			
PACKAGING:		BULK PK-40873-0043			
CKTS	MATERIAL NUMBER	ENG NUMBER	CKTS	MATERIAL NUMBER	ENG NUMBER
02	22-28-7021	42376-0317	20	22-28-7201	42376-0335
03	22-28-7031	42376-0318	21	22-28-7211	42376-0336
04	22-28-7041	42376-0319	22	22-28-7221	42376-0337
05	22-28-7051	42376-0320	23	22-28-7231	42376-0338
06	22-28-7061	42376-0321	24	22-28-7241	42376-0339
07	22-28-7071	42376-0322	25	22-28-7251	42376-0340
08	22-28-7081	42376-0323	26	22-28-7261	42376-0341
09	22-28-7091	42376-0324	27	22-28-7271	42376-0342
10	22-28-7101	42376-0325	28	22-28-7281	42376-0343
11	22-28-7111	42376-0326	29	22-28-7291	42376-0344
12	22-28-7121	42376-0327	30	22-28-7301	42376-0345
13	22-28-7131	42376-0328	31	22-28-7311	42376-0346
14	22-28-7141	42376-0329	32	22-28-7321	42376-0347
15	22-28-7151	42376-0330	33	22-28-7331	42376-0348
16	22-28-7161	42376-0331	34	22-28-7341	42376-0349
17	22-28-7171	42376-0332	35	22-28-7351	42376-0350
18	22-28-7181	42376-0333	36	22-28-7361	42376-0351
19	22-28-7191	42376-0334			

REV:	ECR / ECN INFORMATION:	TITLE:	SHEET No.
K17	EC No.: UCP2015-5319 DATE: 9/3/2015	KK 100 HEADER ASSEMBLY FLAT RIGHT ANGLE BREAKAWAY	- 6 -
DOCUMENT NUMBER:	CREATED / REVISED BY:	CHECKED BY:	APPROVED BY:
SD- 42376-001	MKIPPER	NNGUYEN	FSMITH

A-42376-0352 / 0386						A-42376-0387 / 0421					
HEADER NUMBER:		42312-0002/0036				HEADER NUMBER:		42312-0002/0036			
PIN NUMBER:		42663-DAB208				PIN NUMBER:		42663-DAB228			
PIN LENGTH: L		.765/19.43				PIN LENGTH: L		.765/19.43			
MATING LENGTH: M		.405/10.29				MATING LENGTH: M		.405/10.29			
GOLD POINT: G		.180/4.57				GOLD POINT: G		.180/4.57			
PIN HEIGHT: Y		.248/6.30				PIN HEIGHT: Y		.248/6.30			
PC TAIL LENGTH: P		.135/3.43				PC TAIL LENGTH: P		.135/3.43			
TIN: T		.135/3.43				TIN: T		.135/3.43			
CKTS:		2-36				CKTS:		2-36			
KINKS:		PER SMES-42003				KINKS:		PER SMES-42003			
VOIDED CKTS:		NONE				VOIDED CKTS:		NONE			
PACKAGING:		BULK PK-40873-0043				PACKAGING:		BULK PK-40873-0043			
CKTS	MATERIAL NUMBER	ENG NUMBER	CKTS	MATERIAL NUMBER	ENG NUMBER	CKTS	MATERIAL NUMBER	ENG NUMBER	CKTS	MATERIAL NUMBER	ENG NUMBER
02	22-28-7023	42376-0352	20	22-28-7203	42376-0370	02	22-28-7025	42376-0387	20	22-28-7205	42376-0405
03	22-28-7033	42376-0353	21	22-28-7213	42376-0371	03	22-28-7035	42376-0388	21	22-28-7215	42376-0406
04	22-28-7043	42376-0354	22	22-28-7223	42376-0372	04	22-28-7045	42376-0389	22	22-28-7225	42376-0407
05	22-28-7053	42376-0355	23	22-28-7233	42376-0373	05	22-28-7055	42376-0390	23	22-28-7235	42376-0408
06	22-28-7063	42376-0356	24	22-28-7243	42376-0374	06	22-28-7065	42376-0391	24	22-28-7245	42376-0409
07	22-28-7073	42376-0357	25	22-28-7253	42376-0375	07	22-28-7075	42376-0392	25	22-28-7255	42376-0410
08	22-28-7083	42376-0358	26	22-28-7263	42376-0376	08	22-28-7085	42376-0393	26	22-28-7265	42376-0411
09	22-28-7093	42376-0359	27	22-28-7273	42376-0377	09	22-28-7095	42376-0394	27	22-28-7275	42376-0412
10	22-28-7103	42376-0360	28	22-28-7283	42376-0378	10	22-28-7105	42376-0395	28	22-28-7285	42376-0413
11	22-28-7113	42376-0361	29	22-28-7293	42376-0379	11	22-28-7115	42376-0396	29	22-28-7295	42376-0414
12	22-28-7123	42376-0362	30	22-28-7303	42376-0380	12	22-28-7125	42376-0397	30	22-28-7305	42376-0415
13	22-28-7133	42376-0363	31	22-28-7313	42376-0381	13	22-28-7135	42376-0398	31	22-28-7315	42376-0416
14	22-28-7143	42376-0364	32	22-28-7323	42376-0382	14	22-28-7145	42376-0399	32	22-28-7325	42376-0417
15	22-28-7153	42376-0365	33	22-28-7333	42376-0383	15	22-28-7155	42376-0400	33	22-28-7335	42376-0418
16	22-28-7163	42376-0366	34	22-28-7343	42376-0384	16	22-28-7165	42376-0401	34	22-28-7345	42376-0419
17	22-28-7173	42376-0367	35	22-28-7353	42376-0385	17	22-28-7175	42376-0402	35	22-28-7355	42376-0420
18	22-28-7183	42376-0368	36	22-28-7363	42376-0386	18	22-28-7185	42376-0403	36	22-28-7365	42376-0421
19	22-28-7193	42376-0369				19	22-28-7195	42376-0404			

REV: K17	ECR / ECN INFORMATION: EC No.: UCP2015-5319 DATE: 9/3/2015	TITLE: KK 100 HEADER ASSEMBLY FLAT RIGHT ANGLE BREAKAWAY	SHEET No. - 7 -
DOCUMENT NUMBER: SD- 42376-001		CREATED / REVISED BY: MKIPPER	CHECKED BY: NNGUYEN
		APPROVED BY: FSMITH	

A-42376-0422/0456				A-42376-0549/0581				A-42376-0582/0616			
HEADER NUMBER:		42312-0002/0036		HEADER NUMBER:		42312-0004/0036		HEADER NUMBER:		42312-0002/0036	
PIN NUMBER:		42663-ATA154		PIN NUMBER:		42663-DAA154		PIN NUMBER:		42663-DCA154	
PIN LENGTH: L		.530/13.46		PIN LENGTH: L		.765/19.43		PIN LENGTH: L		.775/19.69	
MATING LENGTH: M		.276/7.01		MATING LENGTH: M		.405/10.29		MATING LENGTH: M		.524/13.31	
GOLD POINT: G		N/A		GOLD POINT: G		N/A		GOLD POINT: G		N/A	
PIN HEIGHT: Y		.142/3.61		PIN HEIGHT: Y		.248/6.30		PIN HEIGHT: Y		.142/3.61	
PC TAIL LENGTH: P		.135/3.43		PC TAIL LENGTH: P		.135/3.43		PC TAIL LENGTH: P		.131/3.33	
TIN: T		OVERALL		TIN: T		OVERALL		TIN: T		OVERALL	
CKTS:		2-36		CKTS:		4-36		CKTS:		2-36	
KINKS:		PER SMES-42003		KINKS:		PER SMES-42003		KINKS:		NONE	
VOIDED CKTS:		NONE		VOIDED CKTS:		3		VOIDED CKTS:		NONE	
PACKAGING		PK-40873-0041		PACKAGING		BULK PK-40873-0043		PACKAGING		PK-40873-0043	
CKTS	MATERIAL NUMBER	CKTS	MATERIAL NUMBER	CKTS	MATERIAL NUMBER	CKTS	MATERIAL NUMBER	CKTS	MATERIAL NUMBER	CKTS	MATERIAL NUMBER
02	42376-0422	20	42376-0440	02		20	42376-0565	02	42376-0582	20	42376-0600
03	42376-0423	21	42376-0441	03		21	42376-0566	03	42376-0583	21	42376-0601
04	42376-0424	22	42376-0442	04	42376-0549	22	42376-0567	04	42376-0584	22	42376-0602
05	42376-0425	23	42376-0443	05	42376-0550	23	42376-0568	05	42376-0585	23	42376-0603
06	42376-0426	24	42376-0444	06	42376-0551	24	42376-0569	06	42376-0586	24	42376-0604
07	42376-0427	25	42376-0445	07	42376-0552	25	42376-0570	07	42376-0587	25	42376-0605
08	42376-0428	26	42376-0446	08	42376-0553	26	42376-0571	08	42376-0588	26	42376-0606
09	42376-0429	27	42376-0447	09	42376-0554	27	42376-0572	09	42376-0589	27	42376-0607
10	42376-0430	28	42376-0448	10	42376-0555	28	42376-0573	10	42376-0590	28	42376-0608
11	42376-0431	29	42376-0449	11	42376-0556	29	42376-0574	11	42376-0591	29	42376-0609
12	42376-0432	30	42376-0450	12	42376-0557	30	42376-0575	12	42376-0592	30	42376-0610
13	42376-0433	31	42376-0451	13	42376-0558	31	42376-0576	13	42376-0593	31	42376-0611
14	42376-0434	32	42376-0452	14	42376-0559	32	42376-0577	14	42376-0594	32	42376-0612
15	42376-0435	33	42376-0453	15	42376-0560	33	42376-0578	15	42376-0595	33	42376-0613
16	42376-0436	34	42376-0454	16	42376-0561	34	42376-0579	16	42376-0596	34	42376-0614
17	42376-0437	35	42376-0455	17	42376-0562	35	42376-0580	17	42376-0597	35	42376-0615
18	42376-0438	36	42376-0456	18	42376-0563	36	42376-0581	18	42376-0598	36	42376-0616
19	42376-0439			19	42376-0564			19	42376-0599		

REV: K17	ECR / ECN INFORMATION: EC No.: UCP2015-5319 DATE: 9/3/2015	TITLE: KK 100 HEADER ASSEMBLY FLAT RIGHT ANGLE BREAKAWAY	SHEET No. - 8 -
DOCUMENT NUMBER: SD- 42376-001	CREATED / REVISED BY: MKIPPER	CHECKED BY: NNGUYEN	APPROVED BY: FSMITH

42376-0683 / ----						42376-0718 / ----					
HEADER NUMBER:		42312-0002/0036				HEADER NUMBER:		42312-0002/0036			
PIN NUMBER:		42663-CTB208				PIN NUMBER:		42663-ANA154			
PIN LENGTH: L		.740/18.80				PIN LENGTH: L		.510/12.95			
MATING LENGTH: M		.405/10.29				MATING LENGTH: M		.175/4.45			
GOLD POINT: G		.180/4.57				GOLD POINT: G		N/A			
PIN HEIGHT: Y		.235/5.97				PIN HEIGHT: Y		.248/6.30			
PC TAIL LENGTH: P		.123/3.12				PC TAIL LENGTH: P		.100/2.54			
TIN: T		.135/3.43				TIN: T		OVERALL			
CKTS:		2-36				CKTS:		2-36			
KINKS:		NONE				KINKS:		NONE			
VOIDED CKTS:		NONE				VOIDED CKTS:		NONE			
PACKAGING:		BULK PK-40873-0041				PACKAGING:		BULK PK-40873-0041			
CKTS	MATERIAL NUMBER	ENG NUMBER	CKTS	MATERIAL NUMBER	ENG NUMBER	CKTS	MATERIAL NUMBER	ENG NUMBER	CKTS	MATERIAL NUMBER	ENG NUMBER
02			20			02	423760718	42376-0718	20		
03			21			03			21		
04			22			04			22		
05			23			05			23		
06	423760687	42376-0687	24			06			24		
07			25			07			25		
08			26			08			26		
09			27			09			27		
10			28			10			28		
11			29			11			29		
12			30			12			30		
13			31			13			31		
14			32			14			32		
15			33			15			33		
16			34			16			34		
17			35			17			35		
18			36			18			36		
19						19					

REV: K17	ECR / ECN INFORMATION: EC No.: UCP2015-5319 DATE: 9/3/2015	TITLE: KK 100 HEADER ASSEMBLY FLAT RIGHT ANGLE BREAKAWAY	SHEET No. - 9 -
DOCUMENT NUMBER: SD- 42376-001	CREATED / REVISED BY: MKIPPER	CHECKED BY: NNGUYEN	APPROVED BY: FSMITH



42376-0753 / 0787					
HEADER NUMBER:		42312-0002/0036			
PIN NUMBER:		42663-BBA154			
PIN LENGTH: L		.560/14.22			
MATING LENGTH: M		.208/5.28			
GOLD POINT: G		N/A			
PIN HEIGHT: Y		.248/6.30			
PC TAIL LENGTH: P		.120/3.05			
TIN: T		OVERALL			
CKTS:		2-36			
KINKS:		NONE			
VOIDED CKTS:		NONE			
PACKAGING:		BULK PK-40873-0041			
CKTS	MATERIAL NUMBER	ENG NUMBER	CKTS	MATERIAL NUMBER	ENG NUMBER
02			20		
03			21		
04			22		
05	423760756	42376-0756	23		
06			24		
07			25		
08			26		
09			27	423760778	42376-0778
10			28		
11			29	423760780	42376-0780
12			30		
13			31		
14			32		
15			33		
16			34		
17			35		
18			36		
19					

42376-0788 / 0822					
HEADER NUMBER:		42312-0002/0036			
PIN NUMBER:		42663-DHA154			
PIN LENGTH: L		.800 / 20.32			
MATING LENGTH: M		.350 / 8.90			
GOLD POINT: G		N/A			
PIN HEIGHT: Y		.354 / 9.00			
PC TAIL LENGTH: P		.118 / 3.00			
TIN: T		OVERALL			
CKTS:		2-36			
KINKS:		NONE			
VOIDED CKTS:		NONE			
PACKAGING:		BULK PK-40873-0041			
CKTS	MATERIAL NUMBER	ENG NUMBER	CKTS	MATERIAL NUMBER	ENG NUMBER
02			20		
03			21		
04	423760790	42376-0790	22		
05			23		
06	423760792	42376-0792	24		
07			25		
08			26		
09			27		
10			28		
11			29		
12			30		
13			31		
14			32		
15			33		
16			34		
17			35		
18			36		
19					

REV: K17	ECR / ECN INFORMATION: EC No.: UCP2015-5319 DATE: 9/3/2015	TITLE: KK 100 HEADER ASSEMBLY FLAT RIGHT ANGLE BREAKAWAY	SHEET No. - 10 -
DOCUMENT NUMBER: SD- 42376-001	CREATED / REVISED BY: MKIPPER	CHECKED BY: NNGUYEN	APPROVED BY: FSMITH

42376-0822 / 0856					
HEADER NUMBER:		42312-0002/0036			
PIN NUMBER:		42663-ATA154			
PIN LENGTH: L		.530/13.46			
MATING LENGTH: M		.198/5.03			
GOLD POINT: G		N/A			
PIN HEIGHT: Y		.235/5.97			
PC TAIL LENGTH: P		.120/3.05			
TIN: T		OVERALL			
CKTS:		2-36			
KINKS:		NONE			
VOIDED CKTS:		NONE			
PACKAGING:		BULK PK-40873-0041			
CKTS	MATERIAL NUMBER	ENG NUMBER	CKTS	MATERIAL NUMBER	ENG NUMBER
02			20		
03			21		
04			22		
05	423760825	42376-0825	23		
06			24		
07			25		
08			26		
09			27		
10			28		
11			29		
12			30		
13			31		
14			32		
15			33		
16			34		
17			35		
18			36		
19					

42376-0892 / 0926					
HEADER NUMBER:		42312-0002/0036			
PIN NUMBER:		42663-DYA154			
PIN LENGTH: L		.860/21.84			
MATING LENGTH: M		.649/16.48			
GOLD POINT: G		N/A			
PIN HEIGHT: Y		.142/3.61			
PC TAIL LENGTH: P		.093/2.35			
TIN: T		OVERALL			
CKTS:		2-36			
KINKS:		NONE			
VOIDED CKTS:		NONE			
PACKAGING:		BULK PK-40873-0041			
CKTS	MATERIAL NUMBER	ENG NUMBER	CKTS	MATERIAL NUMBER	ENG NUMBER
02			20		
03			21		
04	423760894	42376-0894	22		
05			23		
06			24		
07			25		
08	423760898	42376-0898	26		
09			27		
10			28		
11			29		
12			30		
13			31		
14			32		
15			33		
16			34		
17			35		
18			36		
19					

REV: K17	ECR / ECN INFORMATION: EC No.: UCP2015-5319 DATE: 9/3/2015	TITLE: KK 100 HEADER ASSEMBLY FLAT RIGHT ANGLE BREAKAWAY	SHEET No. - 11 -
DOCUMENT NUMBER: SD- 42376-001	CREATED / REVISED BY: MKIPPER	CHECKED BY: NNGUYEN	APPROVED BY: FSMITH

42376-0928					
HEADER NUMBER:		42312-0002/0036			
PIN NUMBER:		42663-0642			
PLATING:		197			
PIN LENGTH: L		.730/18.54			
MATING LENGTH: M		.501/12.72			
GOLD POINT: G		N/A			
PIN HEIGHT: Y		.142/3.61			
PC TAIL LENGTH: P		.110/.280			
TIN: T		OVERALL			
CKTS:		2-36			
KINKS:		NONE			
VOIDED CKTS:		NONE			
PACKAGING:		BULK PK-40873-0041			
CKTS	MATERIAL NUMBER	ENG NUMBER	CKTS	MATERIAL NUMBER	ENG NUMBER
02			20		
03	42376-0928	42376-0928	21		
04			22		
05			23		
06			24		
07			25		
08			26		
09			27		
10			28		
11			29		
12			30		
13			31		
14			32		
15			33		
16			34		
17			35		
18			36		
19					

42376-0962					
HEADER NUMBER:		42312-0002/0036			
PIN NUMBER:		42663-0203			
PLATING:		208			
PIN LENGTH: L		.510/12.95			
MATING LENGTH: M		.164/4.17			
GOLD POINT: G		.140/3.56			
PIN HEIGHT: Y		.142/3.61			
PC TAIL LENGTH: P		.227/5.77			
TIN: T		.135/3.43			
CKTS:		2-36			
KINKS:		NONE			
VOIDED CKTS:		NONE			
PACKAGING:		BULK PK-40873-0041			
CKTS	MATERIAL NUMBER	ENG NUMBER	CKTS	MATERIAL NUMBER	ENG NUMBER
02	42376-0962	42376-0962	20		
03			21		
04			22		
05			23		
06			24		
07			25		
08			26		
09			27		
10			28		
11			29		
12			30		
13			31		
14			32		
15			33		
16			34		
17			35		
18			36		
19					

REV: K17	ECR / ECN INFORMATION: EC No.: UCP2015-5319 DATE: 9/3/2015	TITLE: KK 100 HEADER ASSEMBLY FLAT RIGHT ANGLE BREAKAWAY	SHEET No. - 12 -
DOCUMENT NUMBER: SD- 42376-001		CREATED / REVISED BY: MKIPPER	CHECKED BY: NNGUYEN
		APPROVED BY: FSMITH	