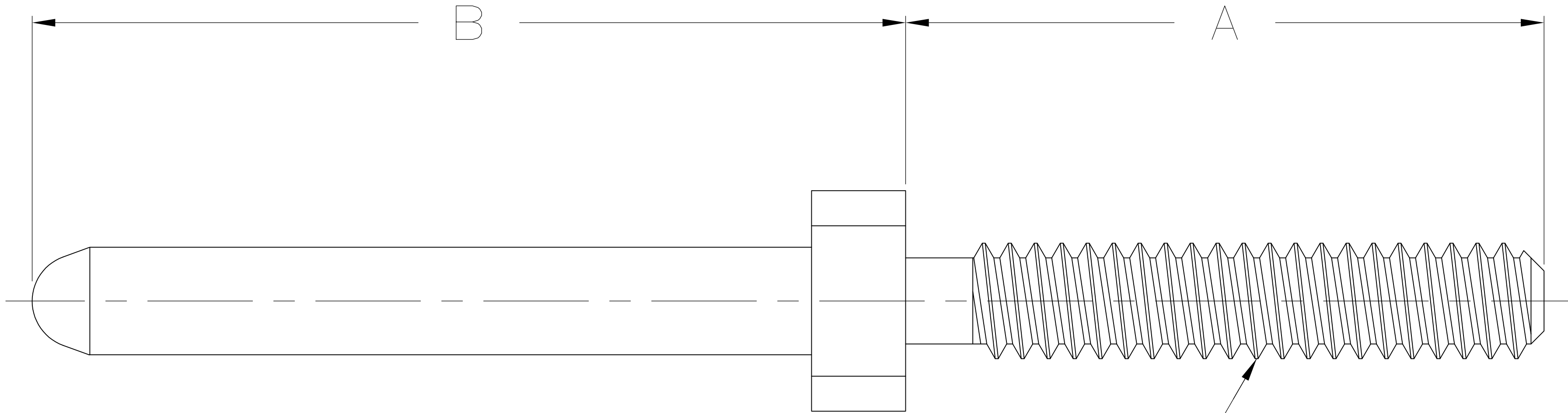
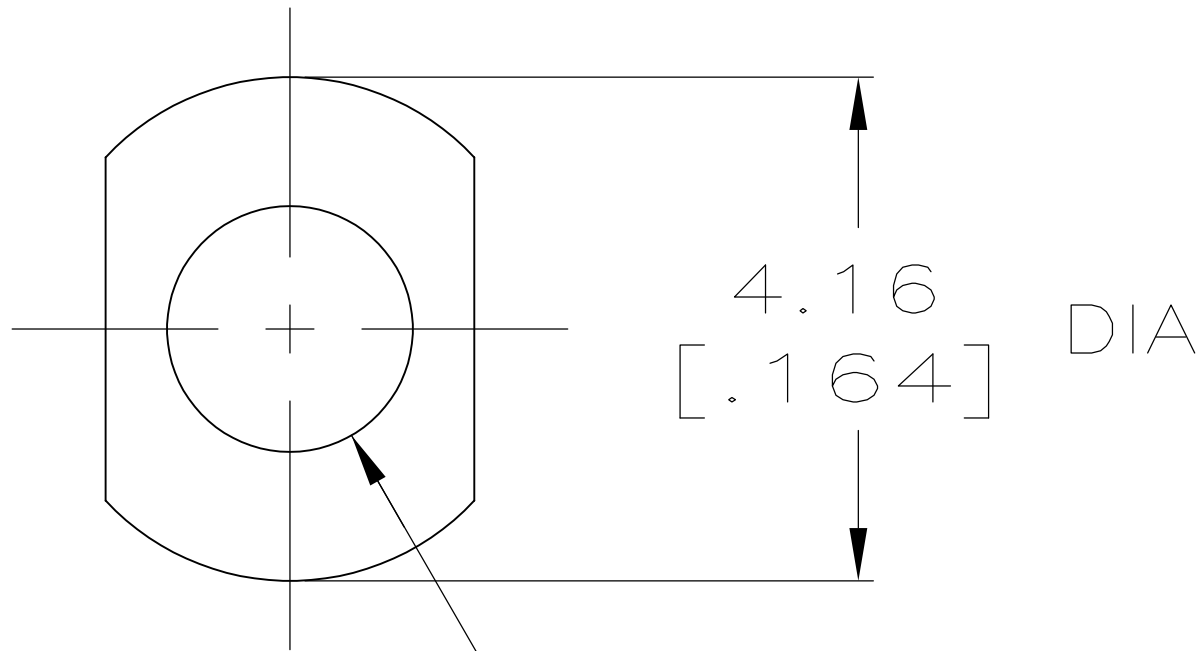


LOC	DIST	REVISIONS				
AD	00	P	LTR	DESCRIPTION	DATE	DWN
		R2		REVISED PER ECO-11-004835	11MAR11	RK



#2-56 UNC-2A THREAD

- 1

MATERIAL: BRASS
- 2

FINISH: 0.00127-0.00254[.000050-.000100] NICKEL UNDERPLATE ALL OVER; 0.00076-0.00102[.000030-.000040] GOLD PLATE.
- 3

FINISH: 0.00254[.000100] MIN COPPER UNDERPLATE ALL OVER; 0.00508-0.00635[.000200-.000250] SILVER PLATE.
- 4

FINISH: 0.00127-0.00254[.000050-.000100] NICKEL UNDERPLATE ALL OVER; 0.00127[.000050] GOLD PLATE.
- 5

FINISH: 0.00127-0.00254[.000050-.000100] NICKEL UNDERPLATE ALL OVER; 0.00127[.000050] GOLD PLATE.
- 6

PART NUMBER IS OBSOLETE.
- 7

OBSOLETE PARTS: OBSOLETE CIS STREAMLINING PER D.RENAUD/D.SINISI

7 OBSOLETE

21.59 [.850]	10.67 [.420]		2-532828-9
21.59 [.850]	10.67 [.420]	PLAIN	2-532828-8
24.89 [.980]	9.53 [.375]		2-532828-7
24.89 [.980]	9.53 [.375]	PLAIN	2-532828-6
21.59 [.850]	8.13 [.320]		2-532828-5
21.59 [.850]	8.13 [.320]	PLAIN	2-532828-4
29.21 [1.150]	8.51 [.335]	PLAIN	2-532828-3
			2-532828-2
24.89 [.980]	25.40 [1.000]		2-532828-1
24.89 [.980]	25.40 [1.000]	PLAIN	2-532828-0
24.89 [.980]	17.14 [.675]	PLAIN	1-532828-9
			1-532828-8
			1-532828-7
			1-532828-6
B	A	FINISH	PART NUMBER

21.59 [.850]	12.06 [.475]		1-532828-5
21.59 [.850]	12.06 [.475]	PLAIN	1-532828-4
			1-532828-3
			1-532828-2
30.35 [1.195]	12.06 [.475]		1-532828-1
30.35 [1.195]	12.06 [.475]	PLAIN	1-532828-0
			532828-9
26.04 [1.025]	12.06 [.475]		532828-8
26.04 [1.025]	12.06 [.475]	PLAIN	532828-7
			532828-6
24.89 [.980]	12.06 [.475]		532828-5
24.89 [.980]	12.06 [.475]	PLAIN	532828-4
			532828-3
29.21 [1.150]	12.06 [.475]		532828-2
29.21 [1.150]	12.06 [.475]	PLAIN	532828-1
B	A	FINISH	

THIS DRAWING IS A CONTROLLED DOCUMENT.

DIMENSIONS:
mm [INCHES]

0 PLC ± -

1 PLC ± -

2 PLC ± -

3 PLC ± 0.13 [.005]

4 PLC ± -

ANGLES ± -

MATERIAL

FINISH

DWN
R.K. SEIFRIED
CHK
J.D.WEARY
APVD
-

06/11/90
9/3/92
-

NAME

PRODUCT SPEC

APPLICATION SPEC

WEIGHT

SIZE
A1

CAGE CODE
00779

DRAWING NO
532828

RESTRICTED TO
-

CUSTOMER DRAWING

SCALE
8:1

SHEET
1 OF 1

REV
R2

TE Connectivity

HDI, STATIC DISCHARGE,
GUIDE PIN

Mouser Electronics

Authorized Distributor

Click to View Pricing, Inventory, Delivery & Lifecycle Information:

[TE Connectivity:](#)

[1-532828-0](#)