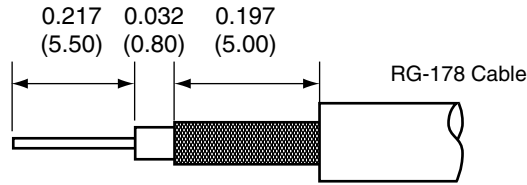
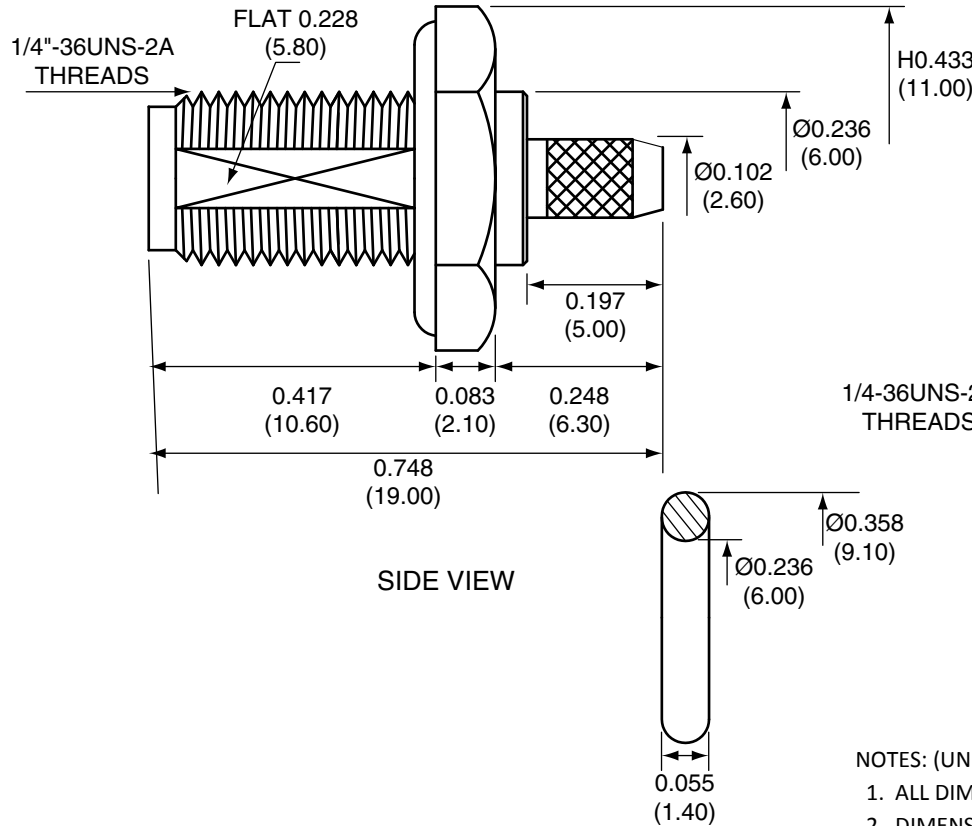


Description	Material	Finish
Body	Brass	Nickel
Socket	BE CU	Gold
Insulation	PTFE	N/A
O Ring	SI Rubber	Rubber
Washer	Brass	Nickel
Nut	Brass	Nickel
Spacer	PTFE	N/A
Support	Brass	Nickel
Heat Shrink	Polyolefin	Black

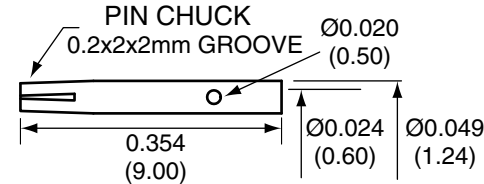


RECOMMENDED CABLE STRIPPING DIMENSIONS

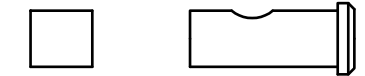
REVISIONS			
REV	DESCRIPTION	DATE	APPV
A	Add heat shrink, new frame, revised stripping instruct./dims	4/21/10	CJ
B	Updated footprint and dimensions; Added new title block	10-JUL-12	BPM



SIDE VIEW

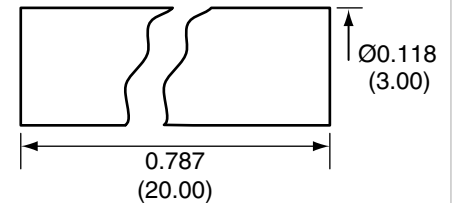


SOCKET

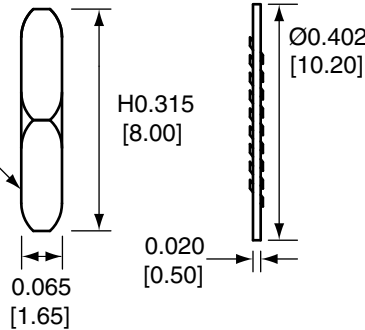


SPACER

SUPPORT

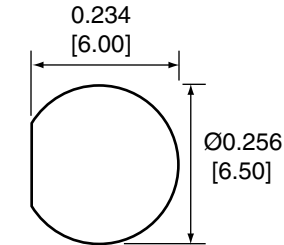


HEAT SHRINK



NUT

WASHER



RECOMMENDED MOUNTING HOLE

NOTES: (UNLESS OTHERWISE SPECIFIED)

1. ALL DIMENSIONS ARE IN INCHES [mm].
2. DIMENSIONS APPLY AFTER FINISHING.
3. MANUFACTURE TO BE COMPLIANT WITH EU RoHS DIRECTIVE.
4. SAFETY BREAK ALL SHARP CORNERS AND EDGES .02 MAXIMUM.

CON SMA014-R178 ASSEMBLY INSTRUCTIONS

1. Strip the cable to the recommended dimensions.
2. Slide the coax into the support until the outside insulation bottoms out against the inside shoulder of the support.
3. Solder the support onto the braid.
4. Place the spacer onto the center conductor.
5. Solder or crimp the socket onto the center conductor.
6. Insert the socket, center conductor, spacer, and support into the body until the top of the socket is even with the white insulation in the body.
7. Crimp the tail of the body onto the support with a 0.093" hex crimp tool.

O-RING

WARNING: THIS DRAWING CONTAINS PROPRIETARY INFORMATION THAT IS THE SOLE PROPERTY OF LINX TECHNOLOGIES, AND SHALL BE TREATED AS SUCH. NO DISCLOSURE OR REPRODUCTION OF THIS DOCUMENT IS PERMITTED, IN WHOLE OR IN PART, WITHOUT THE EXPRESS WRITTEN PERMISSION OF LINX TECHNOLOGIES OR ITS DESIGNATED AGENTS.

MATERIAL:	TOLERANCES: .020 [0.50]-.200 [5.00]= ±.008 [0.20] .200 [5.00]-1.200 [30.00]= ±.016 [0.40] 1.20 [30.0]-4.75 [120.0]= ±.024 [0.60] 4.75 [120.0]-12.40 [315.0]= ±.040 [1.0]	PROJECTION:
FINISH:	DRAWN: B.MURPHY	DT: 10-JUL-12
	ENGR: S.HOGAN	DT: 10-JUL-12

Linx		159 ORT LANE MERLIN, OR 97532	
TITLE: SMA FEMALE BULKHEAD MOUNT CABLE END CRIMP WITH O-RING FOR RG178 CABLE			
SIZE A	DWG. NO. CON SMA014-R178	REV B	
SCALE: 2:1	DO NOT SCALE DRAWING	SHEET 1 OF 1	

Mouser Electronics

Authorized Distributor

Click to View Pricing, Inventory, Delivery & Lifecycle Information:

[Linx Technologies:](#)

[CONSMA014-R178](#)