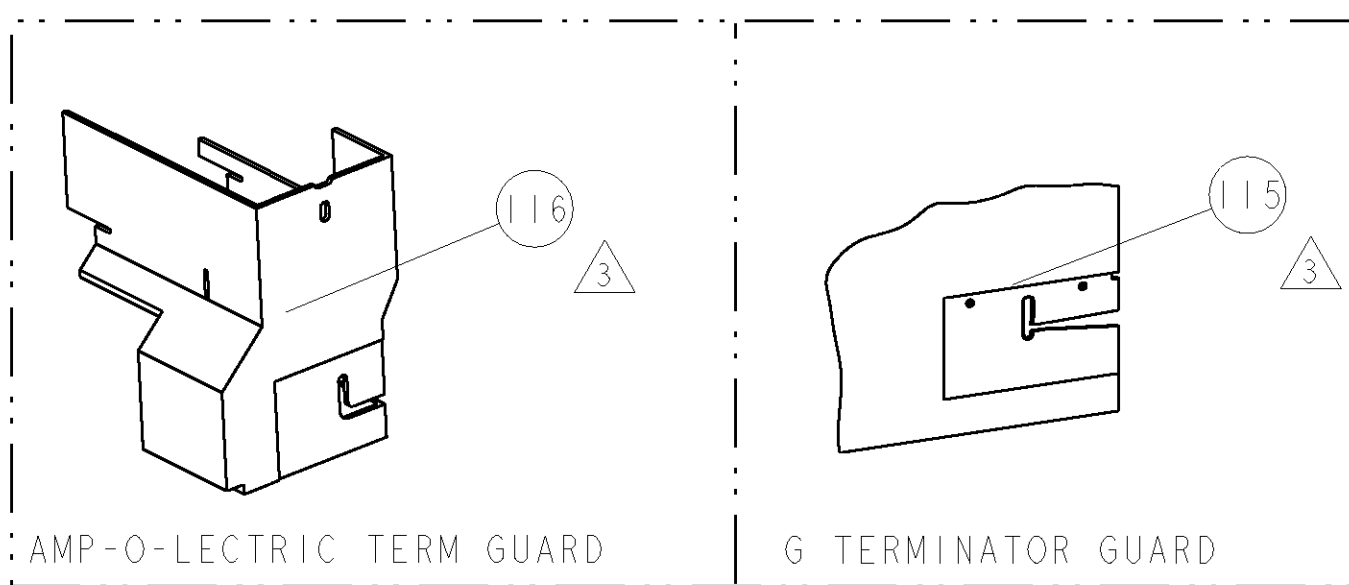


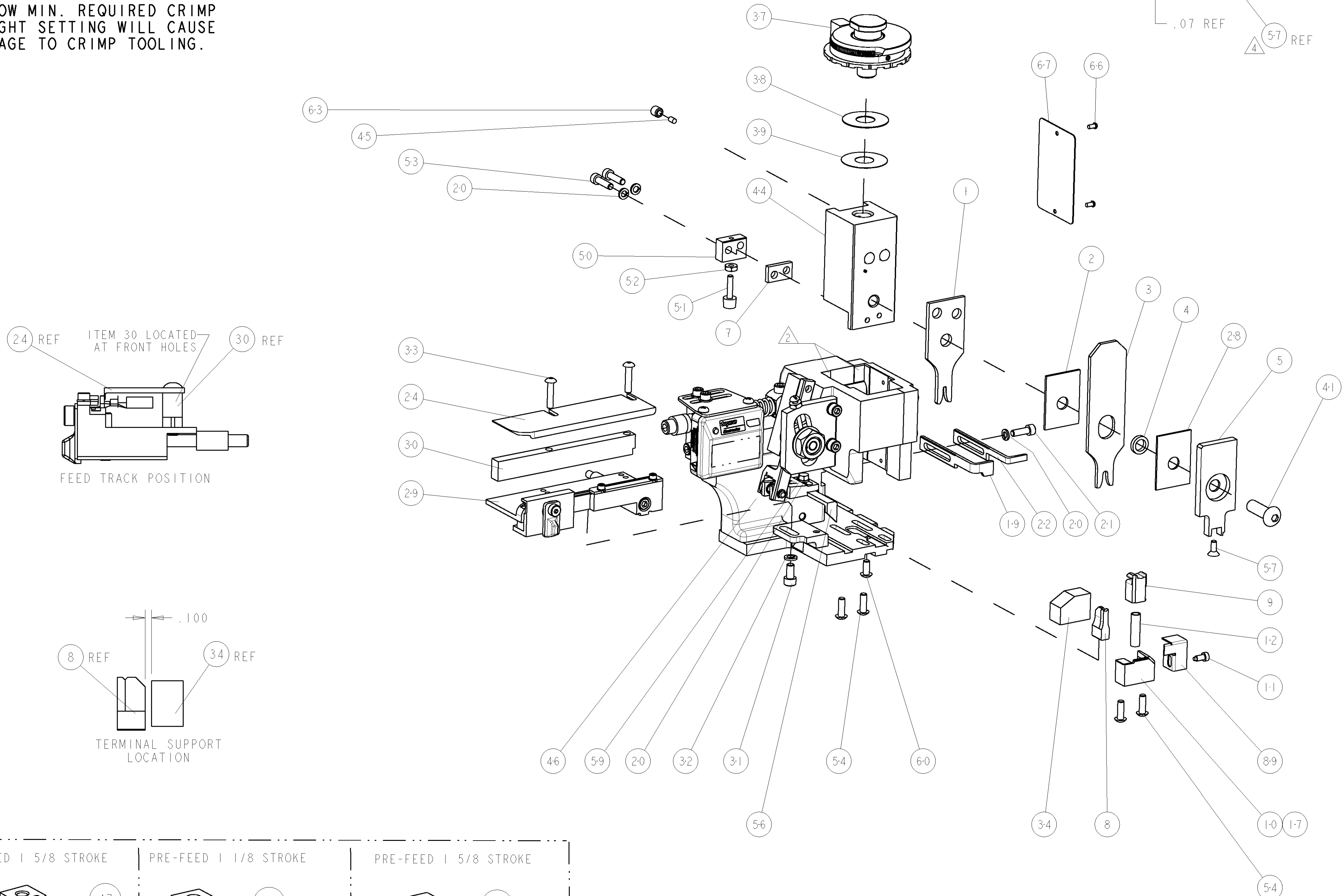
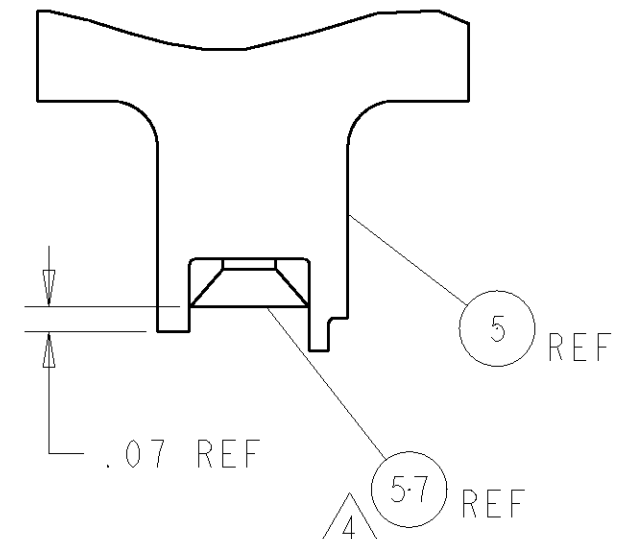
8				7			
THIS DRAWING IS UNPUBLISHED.				RELEASED FOR PUBLICATION			
20				20			
© COPYRIGHT 20 BY TYCO ELECTRONICS CORPORATION. ALL RIGHTS RESERVED.							
PART NUMBER		REV	FIRST USED	POWER UNIT	FEED TYPE	DESCRIPTION	
1855263-1		A	122500-1	LEADMAKER	POST FEED	CUTS CARRIER	
1855263-2		A	565435-5	BENCH MODEL K	PRE FEED	CUTS CARRIER	
1855263-3		A	354500-1	BENCH MODEL G	PRE FEED	CUTS CARRIER	
1855263-6		A	122500-1	LEADMAKER	POST FEED	CONTINUOUS CARRIER	
7-1855263-7		A	-	-	-	SPARE PARTS	

- △ RECOMMENDED SPARE PARTS
- △ GREASE LIGHTLY
- △ GUARD MUST BE IN PLACE WHEN OPERATING APPLICATOR IN A BENCH MACHINE
- △ APPLY TORQ-SEAL IN ALLEN SOCKET TO FILL HOLE AFTER FLAT HD HAS BEEN ADJUSTED TO CORRECT HEIGHT AT QUALIFICATION. APPLY PN 1-23419-5 LOC-TITE TO THREADS.

*** WARNING**
ON INSTALLATION, SET WIRE DISC TO LARGEST WIRE SIZE SETTING. USE OF SETTINGS BELOW MIN. REQUIRED CRIMP HEIGHT SETTING WILL CAUSE DAMAGE TO CRIMP TOOLING.



TERMINAL NAME: BSK 2.8 BOSCH-SENSOR-CONTACT					
TYCO PN	MFR PN	BOSCH TERMINAL - AMP CRIMP SPECS			
1949342-1	1928498060				
1949342-2	1928498062	CRIMP HEIGHT	WIRE SIZE	REF SETTING	
-	-	.056±.002 [1.42±0.05mm]	1mm2	B6	
-	-	.052±.002 [1.32±0.05mm]	0.75mm2	C3	
-	-	.048±.002 [1.22±0.05mm]	0.5mm2	D2	
-	-	-	-	-	
SEAL PN.	-	CRIMP	SIZE	TYPE	RANGE
1572254	1928300599	WIRE	.080 [2.03mm]	F	0.5-1.0 mm2
-	-	INSUL	.150 [3.81mm]	O	Ø.047-.083 [1.2-2.1mm]
WIRE STRIP LENGTH	TERM APPL SPEC	FEED	APPLICATOR INSTRUCTIONS		SET UP GAGE
.165-.180	NONE	.472	408-8040		458637-1



Mouser Electronics

Authorized Distributor

Click to View Pricing, Inventory, Delivery & Lifecycle Information:

[TE Connectivity:](#)

[1855263-2](#)