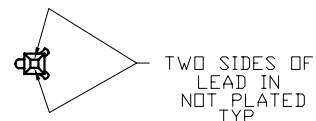
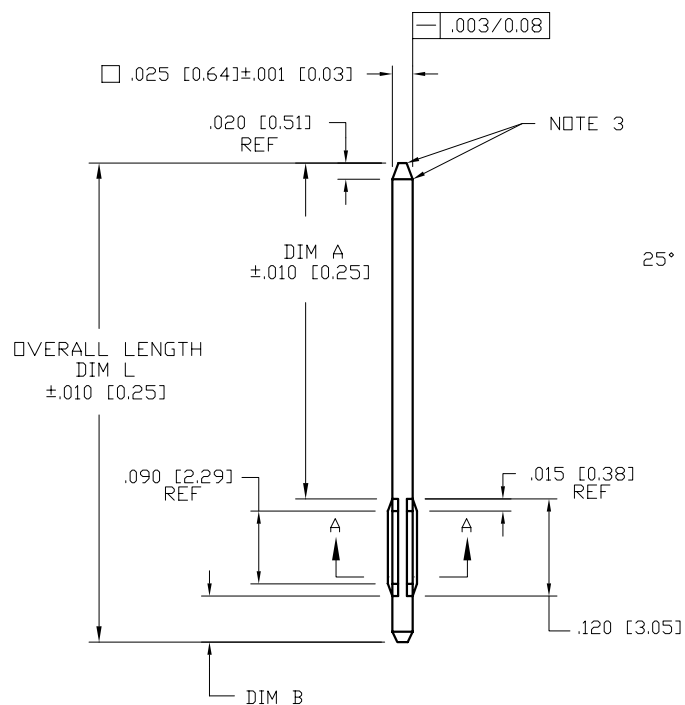
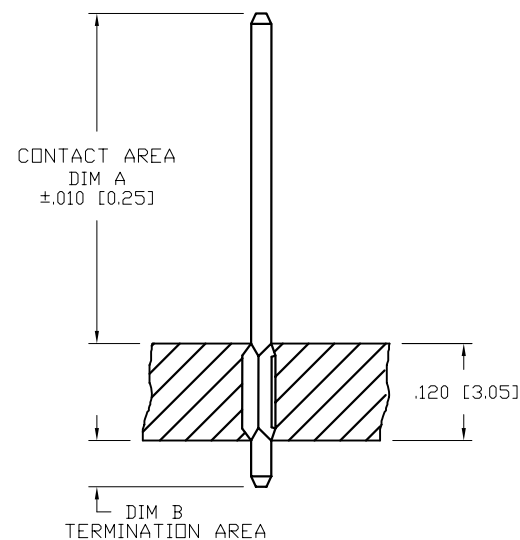


PRODUCT NUMBER
SEE TABLE



$.010$ [0.25] $\pm .003$ [0.08]
 $-.005$ [0.13]

NOTE 4



SECTION THRU P.C. BOARD

$\phi .047$ [1.19] $\pm .002$ [0.05]

R.024 [0.61]
TYP (3)

SECTION A-A
SCALE 4:1
WITHOUT FERRULE

mat'l. code SEE NOTE 1				surface ASME Y14.5	tolerance ASME Y14.5	projection	product family PIN PRODUCTS		
ltr	ec'n no	dr	date	angles	tolerances unless otherwise specified	INCH/MM	title		
E	V60837	EPK	1996-06-03		XX*.01/X*.3		TRI-PIN™ LOOSE PIECE		
F	V71498	HTB	1997-10-28		XXX*.005/XXX*.13				
G	V01594	JRW	2000-07-12	0° ± 2°	XXXX*.0020/XXX*.051	scale 5:1	dwg no		
H	V05-0400	HTB	2005-04-29	dr	E. KROPIEWNICK	1996-06-03	sheet 1 of 3		
J	V06-0684	HTB	2006-07-24	engr	L. FYE	1996-06-03	76191		
K	V07-0009	HTB	2007-01-05	chr	L. FYE	1996-06-03	size		
L	V08-0376	HTB	2008-08-27	appd	L. FYE	1996-06-03	A4		
sheet index				revision	L	L	type		
				sheet	1	2	CUSTOMER Drawing		

PRODUCT NUMBER NOTE 6	PLATING	UNDERPLATING
76191-YYY	30μ" [0.76μ] MIN Au	50μ" [1.27μ] MIN Ni
76191-YYLFF		
76193-YYY	50μ" [1.27μ] MIN Au	50μ" [1.27μ] MIN Ni
76193-YYLFF		
76194-YYY	120μ" [3.05μ] MIN 93/7 SnPb	50μ" [1.27μ] MIN Ni
76194-YYLFF	100μ" [2.54μ] MIN Sn (NOTE 7)	50μ" [1.27μ] MIN Ni
76195-YYY	30μ" [0.76μ] MIN GXT™	50μ" [1.27μ] MIN Ni
76195-YYLFF		
76196-YYY	15μ" [0.38μ] MIN GXT™	50μ" [1.27μ] MIN Ni
76196-YYLFF		
76199-YYY	15μ" [0.38μ] MIN Au	50μ" [1.27μ] MIN Ni
76199-YYLFF		

DISCONTINUED

NOTES :

- ① PIN MATERIAL : PHOS BRONZE 3/4 HARD
ASTM B-159-66
2. .002 [0.05] MAX R. ON WIRE WRAP CORNERS OF PIN.
- ③ BURNISH MARKS PERMITTED.
.003 [0.08] MAX
BULGE .0005 [0.013] MAX TYP
- ④ .016 [0.41] MAX FOR OPPOSITE END IF "B" IS LESS
THAN .230 [5.84].
5. SEE PRODUCT SPECIFICATION BUS-12-069 FOR P.C. BOARD
HOLE DIAMETER AND P.C. BOARD PLATING INFORMATION.
- ⑥ ADD AN LF SUFFIX TO PART NUMBERS FOR PRODUCT
THAT MEETS EUROPEAN UNION DIRECTIVES AND OTHER
COUNTRY REGULATIONS AS DESCRIBED IN GS-22-008.
- ⑦ THIS PRODUCT HAS 100% TIN PLATING IN THE
INTERFACE AND HAS NOT BEEN TESTED FOR WHISKER
GROWTH IN ALL INTERCONNECT ENVIRONMENTS.

mat'l. code SEE NOTE 1				surface ASME Y14.5 ✓	tolerance ASME Y14.5	projection 	product family PIN PRODUCTS		
ltr	ecn no	dr	date	tolerances unless otherwise specified			title TRI-PIN™ LOOSE PIECE		
L				angles	XX*.01/X*.3 XXX*.005/XXX*.13 XXXX*.0020/XXX*.051				
				dr	E. KROPIEWNICKI	1996-06-04	dwg no 76191		
				enrg	L. FYE	1996-06-04			
				chr	T. BREWBAKER	1996-06-04	type CUSTOMER Drawing		
				appd	L. FYE	1996-06-04			
sheet index	revision sheet								



PRODUCT NUMBER	CONTACT AREA		TERM. AREA		OVERALL LENGTH	
NOTE 6	DIM A	DIM A	DIM B	DIM B	DIM L	DIM L
	ENGLISH	METRIC	ENGLISH	METRIC	ENGLISH	METRIC
7619X-001	0.600	15.24	0.050	1.27	0.770	19.56
7619X-002	0.490	12.45	0.050	1.27	0.660	16.76
7619X-003	0.600	15.24	0.330	8.38	1.050	26.67
7619X-004	0.260	6.60	0.050	1.27	0.430	10.92
7619X-005	0.280	7.11	0.330	8.38	0.730	18.54
7619X-006	0.730	18.54	0.050	1.27	0.900	22.86
7619X-007	0.370	9.40	0.050	1.27	0.540	13.72
7619X-008	0.690	17.53	0.040	1.02	0.850	21.59
7619X-009	0.205	5.21	0.050	1.27	0.375	9.53
7619X-010	0.390	9.91	0.050	1.27	0.560	14.22
7619X-011	0.545	13.84	0.050	1.27	0.715	18.16
7619X-012	0.610	15.49	0.050	1.27	0.780	19.81
7619X-013	0.320	8.13	0.215	5.46	0.660	16.76
7619X-014	0.315	8.00	0.050	1.27	0.485	12.32
7619X-015	0.345	8.76	0.310	7.87	0.775	19.69
7619X-016	0.425	10.80	0.310	7.87	0.855	21.72
7619X-017	0.220	5.59	0.080	2.03	0.420	10.67
7619X-018	0.425	10.80	0.080	2.03	0.625	15.88
7619X-019	0.415	10.54	0.040	1.02	0.575	14.61
7619X-020	0.220	5.59	0.055	1.40	0.395	10.03
7619X-021	0.425	10.80	0.055	1.40	0.600	15.24
7619X-022	0.360	9.14	0.425	10.80	0.905	22.99

mat'l. code SEE NOTE 1				surface ASME Y14.5		tolerance ASME Y14.5		projection 		product family PIN PRODUCTS	
ltr	ecr no	dr	date	tolerances unless otherwise specified						title	
L				angles	XX*01/XX*3			INCH/MM		TRI-PIN™ LOOSE PIECE	
					XXX*005/XX*13						
					0"±2"	XXXX*0020/XXX*051		scale 1:1			
				dr	E. KROPIEWNICKI	1996-06-04				dwg no	
				enr	L. FYE	1996-06-04				sheet 3 of 3	
				chr	T. BREWBAKER	1996-06-04				size	
				appd	L. FYE	1996-06-04				A4	
sheet index		revision sheet								type	
										CUSTOMER Drawing	

Mouser Electronics

Authorized Distributor

Click to View Pricing, Inventory, Delivery & Lifecycle Information:

[FCI / Amphenol:](#)

[76191-004](#) [76199-014](#) [76194-009LF](#)