

4

3

2

1


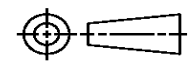
THIS DRAWING IS UNPUBLISHED. RELEASED FOR PUBLICATION  
 © COPYRIGHT ALL RIGHTS RESERVED.

| LOC | DIST | REVISIONS     |           |     |      |
|-----|------|---------------|-----------|-----|------|
| P   | LTR  | DESCRIPTION   | DATE      | DWN | APVD |
|     | A2   | ECR-14-015396 | 26DEC2014 | GK  | HMR  |
|     |      |               |           |     |      |
|     |      |               |           |     |      |

# REPLACED BY OCEAN STYLE APPLICATOR PART NUMBER 2150470-1

FOR REPLACEMENT PARTS FOR APPLICATOR 1531028  
 REFER TO ADDITIONAL PAGE(S). SPARE PARTS KIT (IF LISTED)  
 WILL REMAIN AVAILABLE.

THE REPLACEMENT OCEAN STYLE APPLICATOR HAS THE  
 SAME TERMINATOR/PRESS INTERFACE AS APPLICATOR  
 1531028

|  |        |                  |                  |              |            |               |   |       |   |       |   |        |   |              |   |  |  |
|--|--------|------------------|------------------|--------------|------------|---------------|---|-------|---|-------|---|--------|---|--------------|---|--|--|
| THIS DRAWING IS A CONTROLLED DOCUMENT.   |        | DWN              | GOPALAKRISHNA HV |              |            |               |   |       |   |       |   |        |   |              |   |  |  |
| DIMENSIONS:  |        | CHK              | RAGHAVENDRA      |              |            |               |   |       |   |       |   |        |   |              |   |  |  |
| TOLERANCES UNLESS OTHERWISE SPECIFIED:   |        | APVD             | RAGHAVENDRA      |              |            |               |   |       |   |       |   |        |   |              |   |  |  |
| <table border="0"> <tr><td>0 PLC</td><td>±</td></tr> <tr><td>1 PLC</td><td>±</td></tr> <tr><td>2 PLC</td><td>±</td></tr> <tr><td>3 PLC</td><td>±</td></tr> <tr><td>4 PLC</td><td>±</td></tr> <tr><td>ANGLES</td><td>±</td></tr> </table> |        | 0 PLC            | ±                | 1 PLC        | ±          | 2 PLC         | ± | 3 PLC | ± | 4 PLC | ± | ANGLES | ± | PRODUCT SPEC |  TE Connectivity<br>NAME<br>FINE ADJUST END FEED HDI<br>APPLICATOR |  |  |
| 0 PLC  | ±      |                  |                  |              |            |               |   |       |   |       |   |        |   |              |   |  |  |
| 1 PLC  | ±      |                  |                  |              |            |               |   |       |   |       |   |        |   |              |   |  |  |
| 2 PLC  | ±      |                  |                  |              |            |               |   |       |   |       |   |        |   |              |   |  |  |
| 3 PLC  | ±      |                  |                  |              |            |               |   |       |   |       |   |        |   |              |   |  |  |
| 4 PLC  | ±      |                  |                  |              |            |               |   |       |   |       |   |        |   |              |   |  |  |
| ANGLES   | ±      |                  |                  |              |            |               |   |       |   |       |   |        |   |              |   |  |  |
|   |        | APPLICATION SPEC |                  |              |            |               |   |       |   |       |   |        |   |              |   |  |  |
| MATERIAL   | FINISH | WEIGHT           | SIZE             | CAGE CODE    | DRAWING NO | RESTRICTED TO |   |       |   |       |   |        |   |              |   |  |  |
|  |        |                  | A3               |              | ©- 1531028 |               |   |       |   |       |   |        |   |              |   |  |  |
| CUSTOMER DRAWING   |        |                  | SCALE            | SHEET 1 OF 2 | REV A2     |               |   |       |   |       |   |        |   |              |   |  |  |

| PART NUMBER | REV | TERMINATOR        | FEED TYPE      | DESCRIPTION        |
|-------------|-----|-------------------|----------------|--------------------|
| 1531028-1   | A   | BENCH & LEADMAKER | MECH POST FEED | HDI APPLICATOR     |
| 7-1531028-1 | A   | BENCH & LEADMAKER | MECH POST FEED | -I AND SPARE PARTS |
| 7-1531028-7 | A   | -                 | -              | SPARE PARTS KIT    |

| REV | DATE      | BY | CHKD | APPD | DESCRIPTION   |
|-----|-----------|----|------|------|---------------|
| A   | 25FEB2009 | RK | GB   |      | RELEASED      |
| A1  | 11MAY2011 | RS | SX   |      | ECR-11-009707 |

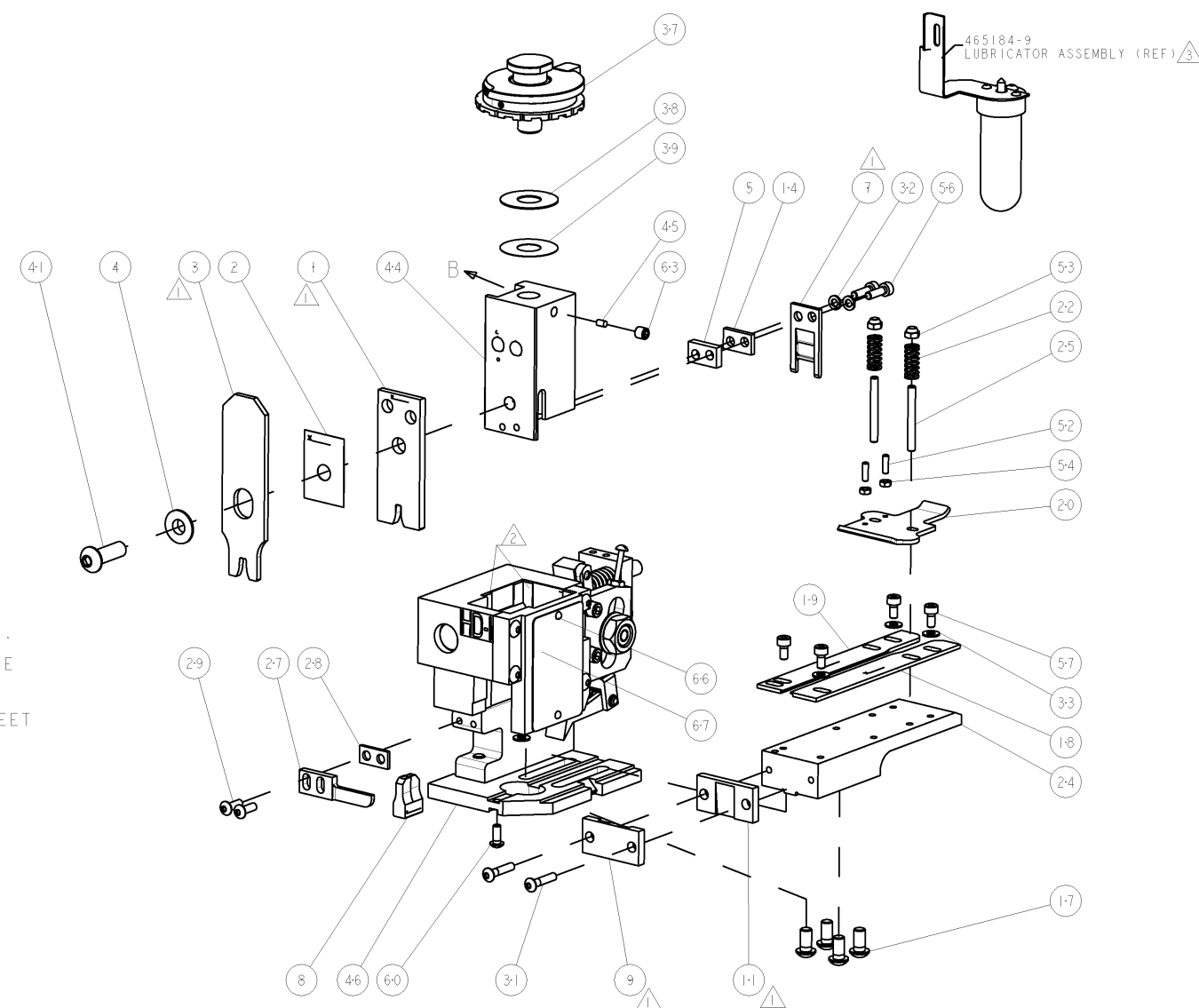
| CRIMP | SIZE           | TYPE | RANGE                     |
|-------|----------------|------|---------------------------|
| WIRE  | 3.30 [.130 IN] | F    | 20-16 AWG                 |
| INSUL | 4.57 [.180 IN] | F    | Ø2.54-3.56 [.100-.140 IN] |

WIRE STRIP LENGTH  
4.75-5.51 [.187-.217 IN]

APPL INSTRUCTIONS  
408-8323 & 408-8490

TERMINAL APPL SPEC 114-2084 FEED 21.72 [.855 IN]

| WIRE SIZE | CRIMP HEIGHT               | REF SETTING |
|-----------|----------------------------|-------------|
| 16 AWG    | 2.03 ±0.05 [.080 ±.002 IN] | C1          |
| 18 AWG    | 1.91 ±0.05 [.075 ±.002 IN] | D1          |
| 20 AWG    | 1.85 ±0.05 [.073 ±.002 IN] | D5          |

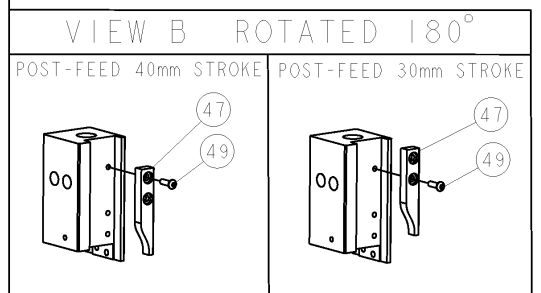


RECOMMENDED SPARE PARTS

GREASE RAM, CAM, CAM FOLLOWER AND FEED ROD LIGHTLY.

CERTAIN TERMINALS REQUIRE LUBRICATION. REFER TO THE APPLICATOR INSTRUCTION SHEET FOR MORE INFORMATION.

4. LUBRICATE DAILY PER THE APPLICATOR INSTRUCTION SHEET SUPPLIED WITH THE APPLICATOR.



**\* WARNING**  
ON INSTALLATION, SET WIRE DISC TO LARGEST WIRE SIZE SETTING. USE OF SETTINGS BELOW MIN. REQUIRED CRIMP HEIGHT SETTING WILL CAUSE DAMAGE TO CRIMP TOOLING.

| QTY | UNIT | PART NO    | DESCRIPTION                     | ITEM NO     |         |
|-----|------|------------|---------------------------------|-------------|---------|
| -   | 1    | 1338705-4  | DOCUMENTATION PACKAGE           | 71          |         |
| -   | 1    | 461264-5   | PLATE, IDENTIFICATION           | 67          |         |
| -   | 2    | 21017-2    | SCREW, DRIVE                    | 66          |         |
| -   | 1    | 3-18031-0  | SCR, SET, CUP POINT M6 X 6.0    | 63          |         |
| -   | 1    | 18024-7    | SCR, BTN SKT HD CAP (M4 X 10.0) | 60          |         |
| -   | 4    | 1-18023-0  | SCR, SKT HD CAP M4 X 8.0        | 57          |         |
| -   | 2    | 9-18023-6  | SCR, SKT HD CAP M4 X 14.0       | 56          |         |
| -   | 2    | 18029-1    | NUT, HEX, REG M3                | 54          |         |
| -   | 2    | 986965-1   | NUT, LOCK, HEX, TORQUE (M4)     | 53          |         |
| -   | 2    | 2-18032-2  | SCR, SET, FLT POINT M3 X 10.0   | 52          |         |
| -   | 1    | 18024-3    | SCR, BTN SKT HD CAP (M3 X 10.0) | 49          |         |
| -   | 1    | 1338676-1  | CAM, UNIVERSAL POST-FEED        | 47          |         |
| -   | 1    | 1338662-1  | SUB ASSY, APPLICATOR FRAME      | 46          |         |
| -   | 1    | 690191-1   | PLUG, NYLON                     | 45          |         |
| -   | 1    | 1333260-1  | RAM                             | 44          |         |
| -   | 1    | 2-18024-6  | SCR, BTN SKT HD CAP (M6 X 25.0) | 41          |         |
| -   | 1    | 690125-1   | SHIM SUB-ASSY                   | 39          |         |
| -   | 1    | 1-469367-2 | SHIM                            | 38          |         |
| -   | 1    | 879103-3   | FINE ADJUST HEAD ASSEMBLY       | 37          |         |
| -   | 4    | 18027-2    | WASHER, FLAT, REG M4            | 33          |         |
| -   | 2    | 18025-2    | WASHER, SPRG LOCK, REG M4       | 32          |         |
| -   | 2    | 1-18024-0  | SCR, BTN SKT HD CAP (M4 X 20.0) | 31          |         |
| -   | 2    | 18024-8    | SCR, BTN SKT HD CAP (M4 X 12.0) | 29          |         |
| -   | 1    | 3-690451-2 | SPACER, STRIPPER                | 28          |         |
| -   | 1    | 240639-1   | STRIPPER (MACHINING)            | 27          |         |
| -   | 2    | 1320906-1  | STUD, THREADED                  | 25          |         |
| -   | 1    | 1320995-1  | PLATE, STRIP GUIDE              | 24          |         |
| -   | 2    | 4-22281-1  | SPRING, DRAG                    | 22          |         |
| -   | 1    | 1338665-1  | DRAG                            | 20          |         |
| -   | 1    | 458030-3   | STRIP GUIDE, REAR               | 19          |         |
| -   | 1    | 458031-3   | STRIP GUIDE, FRONT              | 18          |         |
| -   | 4    | 1-18024-8  | SCR, BTN SKT HD CAP (M6 X 12.0) | 17          |         |
| -   | 1    | 240641-6   | SPACER                          | 14          |         |
| -   | 1    | 240644-1   | PLATE, REAR SHEAR               | 11          |         |
| -   | -    | -          | -                               | 10          |         |
| -   | 1    | 690482-8   | PLATE, FRONT SHEAR              | 9           |         |
| -   | 1    | 1333221-8  | ANVIL, EF .130                  | 8           |         |
| -   | 1    | 1-690474-0 | BLADE, SLUG                     | 7           |         |
| -   | -    | -          | -                               | 6           |         |
| -   | 1    | 5-240641-0 | SPACER                          | 5           |         |
| -   | 1    | 238009-1   | BLOCK, FL CRIMPER SPACER        | 4           |         |
| -   | 1    | 4-456134-6 | CRIMPER, INSULATION F PREMIUM   | 3           |         |
| -   | 1    | 455888-1   | SPACER, CRIMPER                 | 2           |         |
| -   | 1    | 456424-2   | CRIMPER, WIRE PREMIUM           | 1           |         |
| -77 | -71  | -1         | PART NO                         | DESCRIPTION | ITEM NO |

|                   |                   |   |
|-------------------|-------------------|---|
| DATE: 03FEB2009   | BY: R. KNEPPER    | TE CONNECTIVITY                           |
| DATE: 25FEB2009   | CHK: G. BAILEY    | Harrisburg, PA 17105-3688                 |
| DATE: 25FEB2009   | APPD: M. DEMING   | NAME: FINE ADJUST END FEED HDI APPLICATOR |
| PRODUCT SPEC:     | APPLICATION SPEC: | SIZE: A1                                  |
| MATERIAL:         | FINISH:           | SCALE: 3:5                                |
| WEIGHT:           | CAGE CODE: 00779  | DRAWING NO: 1531028                       |
| CUSTOMER DRAWING: | SHEET: 2          | OF: 2                                     |

# Mouser Electronics

Authorized Distributor

Click to View Pricing, Inventory, Delivery & Lifecycle Information:

[TE Connectivity:](#)

[1531028-1](#)