

CG Series Single Pole Power Rocker Switches

Features/Benefits

- **Bevelled frame**
- **Illuminated versions available**
- **Easy panel mount installation**

Typical Applications

- **Computers and peripherals**
- **Small appliances**
- **Instrument panels**
- **Industrial controls**
- **RoHS compliant**



Specifications

CONTACT RATING:

16 AMPS @ 125 VAC, 10 AMPS @ 250 VAC.

10 AMPS @ 250 VAC, 6 AMPS @ 250 VAC.

ELECTRICAL LIFE: 10.000 make and break cycles at full load.

INSULATION RESISTANCE: $10^8 \Omega \text{ min.}$

DIELECTRIC STRENGTH: 1,500 VRMS @ sea level.

OPERATING TEMPERATURE: -20°C to +85°C

Materials

HOUSING AND ACTUATOR: 6/6 nylon (UL94V-2), black, matte finish.

ILLUMINATED ACTUATOR: Polycarbonate, matte finish.

CENTER CONTACTS: Silver plated, copper alloy.

END CONTACTS: Silver plated.

ALL TERMINALS: Silver plated, copper alloy.

NOTE: Specifications and materials listed above are for switches with standard options. For information on specific and custom switches, consult Customer Service Center.

Build-A-Switch

To order, simply select desired option from each category and place in the appropriate box. Available options are shown and described on pages G-87 through G-89. For additional options not shown in catalog, consult Customer Service Center.

Switch Function _____ CG101 SPDT On-None-On CG102 SPST On-None-Off CG103 SPDT On-Off-On CG105 SPDT Mom-Off-Mom CG12 * SPST On-None-Off		Actuator Color _____ J1 Rocker J2 ** Two-tone rocker J3 Illuminated rocker 2 Black 1 White 3 Red R Red, illuminated A Amber, illuminated G Green, illuminated		Mounting Style/Color _____ S2 Snap-in, black S1 Snap-in, white		Termination _____ 05 .250" quick connect		Actuator Marking _____ (NONE) No marking D ON-OFF H "O I" - international ON-OFF P "O -" international ON-OFF		Contact Rating _____ QF Silver		Lamp Rating _____ (NONE) No lamp 7 125 VAC neon 8 250 VAC neon	
---	--	--	--	---	--	---	--	--	--	---	--	---	--

CG12 — for switches with both marking and illumination

* CG12 — for switches with both marking and illumination

** J2 — refer to table on next page for actuator options

Rocker



Dimensions are shown: Inches (mm)
Specifications and dimensions subject to change



CG Series Single Pole Power Rocker Switches

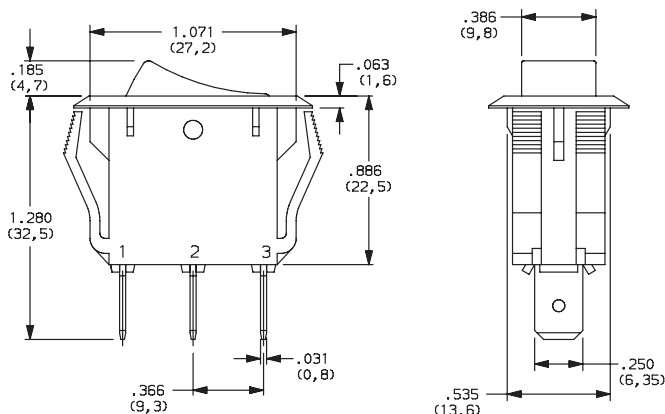
SWITCH FUNCTION



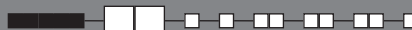
NO. POLES	MODEL NO.	SWITCH FUNCTION			CONNECTED TERMINALS			SCHEMATIC
		Pos. 1	Pos. 2	Pos. 3	Pos. 1	Pos. 2	Pos. 3	
		C&K marking on opposite side			C&K marking on opposite side			
SP	CG101	ON	NONE	ON	1-2		2-3	
	CG102	ON	NONE	OFF	1-2	N/A	OPEN	
	CG103	ON	OFF	ON	1-2	OPEN	2-3	
	CG105	MOM	OFF	MOM	1-2	OPEN	2-3	
	CG12 *	ON	NONE	OFF	1-2	N/A	OPEN	

* CG12 - for switches with both marking and illumination

Shown in Pos. 1

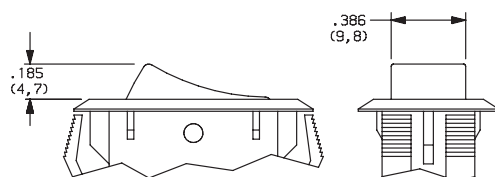


ACTUATOR



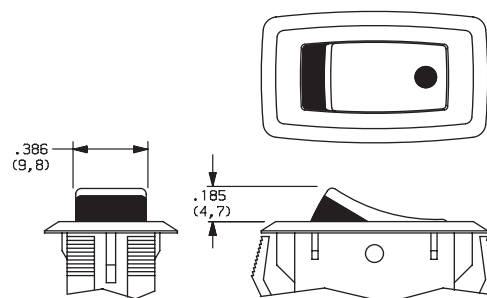
J1 ROCKER

J3 ILLUMINATED ROCKER



NOTE: J3 actuator available with CG102 switch function only.

J2 TWO-TONE ROCKER



NOTE: Available with CG102 switch function only.



Third Angle
Projection

Dimensions are shown: Inches (mm)
Specifications and dimensions subject to change

www.ckswitches.com



CG Series

Single Pole Power Rocker Switches

ACTUATOR COLOR

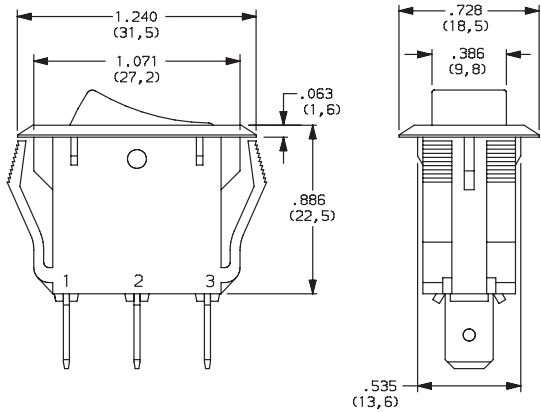
ACTUATOR	OPTION CODE	ACTUATOR COLOR
J1	2	BLACK
	1	WHITE
	3	RED
J3	R	RED, ILLUMINATED
	A	AMBER, ILLUMINATED
	G	GREEN, ILLUMINATED

OPTION CODE	ACTUATOR COLOR	
	TOP	BOTTOM
1	WHITE	RED
2	WHITE	BLACK
3	RED	WHITE
4	BLACK	WHITE
5	BLACK	RED

J2 actuator only

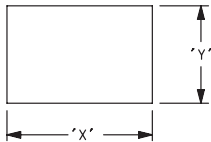
MOUNTING STYLE/COLOR

- S2 SNAP-IN, BLACK
- S1 SNAP-IN, WHITE



Shown in Pos. 1

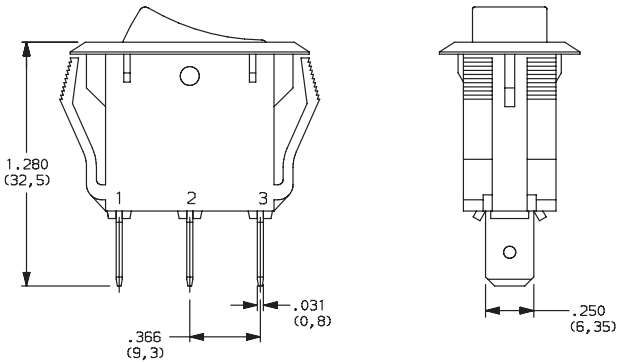
PANEL MOUNTING



PANEL THICKNESS	"X"	"Y"
0.030-0.049 (0,75-1,25)	1.087-.004 (27,6-0,1)	0.543+.004 (13,8+0,1)
0.049-0.079 (1,25-2,0)	1.094-.004 (27,8-0,1)	0.543+.004 (13,8+0,1)
0.079-0.118 (2,0-3,0)	1.102-.004 (28,0-0,1)	0.543+.004 (13,8+0,1)

TERMINATION

- 05 .250" QUICK CONNECT



Shown in Pos. 1



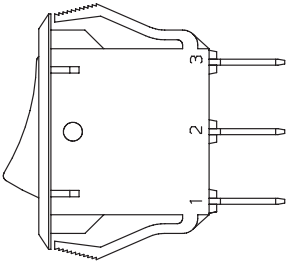
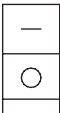
CG Series Single Pole Power Rocker Switches

ACTUATOR MARKING

NONE NO MARKING **D** ON-OFF



H 0 I **P** 0 -



NOTE: Orientation of actuator marking and terminals.
Shown in Pos. 1

CONTACT MATERIAL

OPTION CODE	CONTACT AND TERMINAL MATERIAL	RATINGS	
QF	SILVER	POWER	16 AMPS @ 125 VAC; 10 AMPS @ 250 VAC 10 AMPS @ 250 VAC

* Note: See Technical Data section of this catalog for RoHS compliant and compatible definitions and specifications.



LAMP RATING

(NONE) NO LAMP
7 125 VAC 33kΩ NEON
8 250 VAC 150kΩ NEON

NOTE: Lamp rating for J3 actuator option.

Rocker



G



Dimensions are shown: Inches (mm)
Specifications and dimensions subject to change

Mouser Electronics

Authorized Distributor

Click to View Pricing, Inventory, Delivery & Lifecycle Information:

C&K Switches:

[CG101J11S105QF](#) [CG101J11S205QF](#) [CG101J12S205QF](#) [CG103J12S205QF](#) [CG102J11S205QF](#)
[CG102J3RS205QF7](#) [CG102J11S205PQF](#) [CG102J3AS205QF7](#) [CG102J12S205QF](#) [CG102J3GS205QF7](#)
[CG102J12S205PQF](#) [CG102J12S205HQF](#) [CG102J12S205DQF](#) [CG102J23S205QF](#) [CG102J11S105HQF](#)
[CG105J12S205QF](#) [CG102J25S205QF](#)