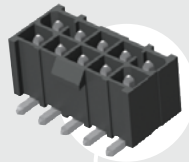
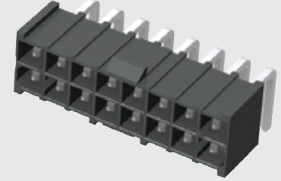


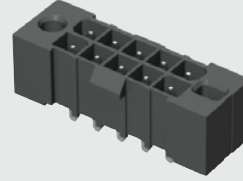
IPBT-105-H2-T-D-K



IPBT-108-H1-T-D-RA-K



IPBT-105-H1-T-D-GP



IPBT SERIES

(4.19 mm) .165"

# ISOLATED TERMINAL POWER HEADER

## SPECIFICATIONS

For complete specifications see [www.samtec.com?IPBT](http://www.samtec.com?IPBT)

**Insulator Material:** Black Liquid Crystal Polymer

**Contact Material:** High Copper Alloy

**Plating:** Sn over 50 μm (1.27 μm) Ni

**Operating Temp Range:** -55 °C to +105 °C

**Voltage Rating:** 400 VAC/565 VDC

**Standard Creepage:** (3.66 mm) .144" (-S)

(3.63 mm) .143" (-D)

**Standard Clearance:** (3.05 mm) .120"

**RoHS Compliant:** Yes

**Lead-Free Solderable:** Yes

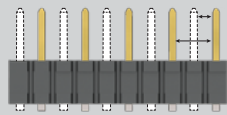
**Lead-Free Solderable:** Yes

IPBT/IPBS	
PINS POWERED	CURRENT RATING (PER CONTACT)
2	10.3 A
4	8.4 A
6	7.6 A
8	7.1 A
30	6.0 A

**Board Mates:** IPBS

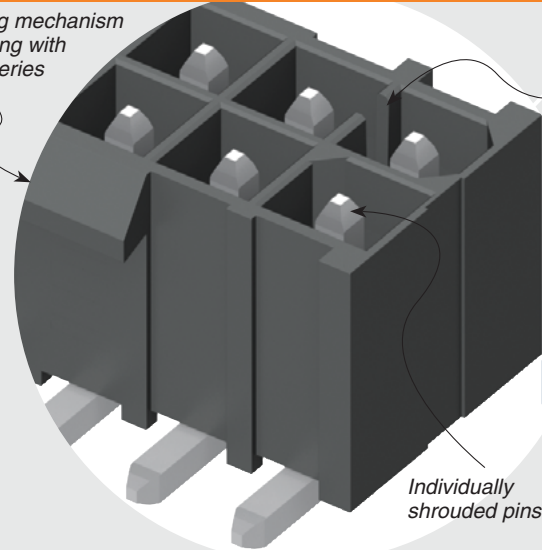
**Cable Mates:** PMSD, PMSS

## CREEPAGE AND CLEARANCE



Selectively loading contacts achieves customer specific creepage and clearance requirements. Contact [asp@samtec.com](mailto:asp@samtec.com)

Latching mechanism for mating with IPBD Series



Keyed polarization

Individually shrouded pins

RUGGEDIZED BY SAMTEC

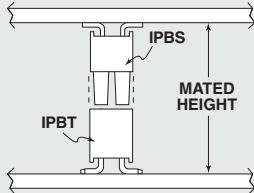
- Individually shrouded contacts
- Polarized guide post hole option

## RECOGNITIONS

For complete scope of recognitions see [www.samtec.com/quality](http://www.samtec.com/quality)



## APPLICATION



IPBT/IPBS LEAD STYLE	MATED HEIGHT*
H1-01	(15.25) .600
-H2-02	(16.84) .663

\*Processing conditions will affect mated height.

## ALSO AVAILABLE (MOQ Required)

- Other sizes
- Other lead styles

**Note:** Some lengths, styles and options are non-standard, non-returnable.



02, 03, 04, 05, 08, 10, 15 (-D only)

02, 03, 04, 05, 08, 10 (-S only)

(Standard sizes)

LEAD STYLE

- H1 = Through-hole
- H2 = Surface Mount

PLATING OPTION

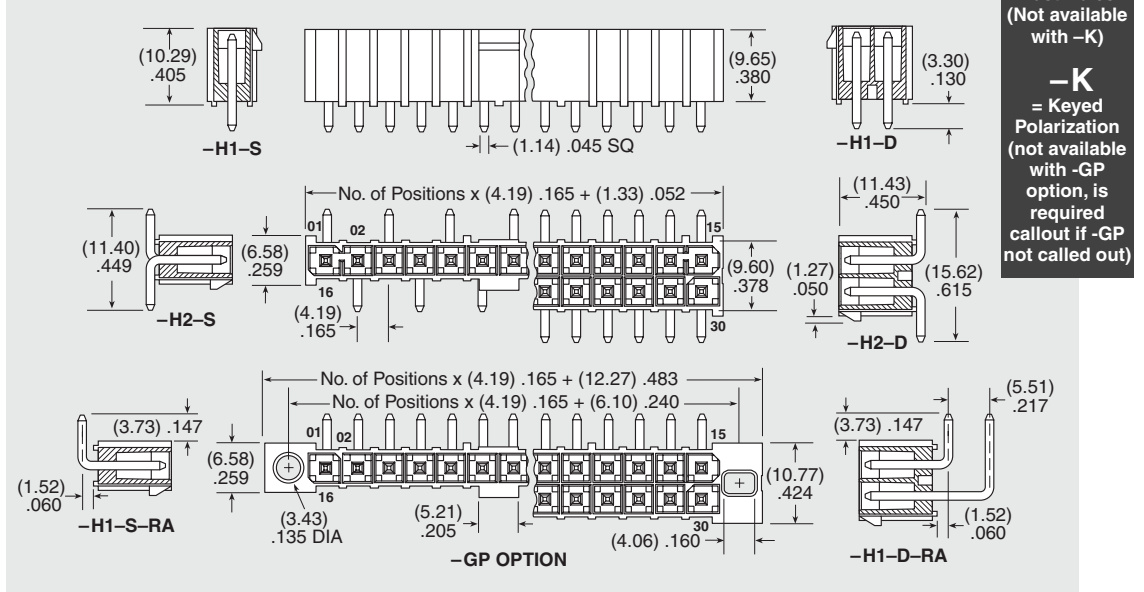
- T = Matte Tin

ROW OPTION

- S = Single Row
- D = Double Row

OPTION

- RA = Right-angle (Lead Style -H1 only)
- GP = Guide Post Holes (Not available with -K)
- K = Keyed Polarization (not available with -GP option, is required callout if -GP not called out)



Due to technical progress, all designs, specifications and components are subject to change without notice.

# Mouser Electronics

Authorized Distributor

Click to View Pricing, Inventory, Delivery & Lifecycle Information:

## Samtec:

[IPBT-112-H1-T-D-RA-GP](#) [IPBT-115-H1-T-D-RA-GP](#) [IPBT-104-H2-T-S-K](#) [IPBT-110-H1-T-D-K](#) [IPBT-103-H2-T-D-K](#)  
[IPBT-110-H2-T-D-GP](#) [IPBT-103-H2-T-S-K](#) [IPBT-105-H1-T-D-K](#) [IPBT-103-H1-T-D-GP](#) [IPBT-108-H2-T-D-K](#) [IPBT-110-](#)  
[H1-T-D-RA-K](#) [IPBT-105-H1-T-S-K](#) [IPBT-105-H2-T-D-K](#) [IPBT-110-H2-T-D-K](#) [IPBT-115-H1-T-D-RA-K](#) [IPBT-108-H1-T-](#)  
[D-K](#) [IPBT-105-H2-T-D-GP](#) [IPBT-104-H2-T-D-K](#) [IPBT-102-H1-T-D-RA-K](#) [IPBT-103-H1-T-S-RA-GP](#) [IPBT-103-H1-T-D-](#)  
[RA-GP](#) [IPBT-115-H1-T-D-K](#) [IPBT-102-H1-T-D-RA-GP](#) [IPBT-102-H1-T-S-RA-K](#) [IPBT-104-H1-T-S-K](#) [IPBT-105-H1-T-](#)  
[D-GP](#) [IPBT-108-H1-T-S-RA-K](#) [IPBT-105-H1-T-S-RA-K](#) [IPBT-108-H1-T-D-RA-K](#) [IPBT-103-H1-T-S-K](#) [IPBT-110-H1-T-](#)  
[D-RA-GP](#) [IPBT-103-H1-T-S-RA-K](#) [IPBT-103-H1-T-D-RA-K](#) [IPBT-108-H1-T-D-RA-GP](#) [IPBT-105-H1-T-D-RA-K](#) [IPBT-](#)  
[102-H1-T-S-K](#) [IPBT-110-H1-T-D-GP](#) [IPBT-102-H2-T-S-K](#) [IPBT-102-H1-T-D-K](#) [IPBT-103-H1-T-D-K](#) [IPBT-104-H1-T-D-](#)  
[K](#) [IPBT-110-H5-T-D-GP](#) [IPBT-102-H1-T-D-GP](#) [IPBT-104-H1-T-D-RA-GP](#) [IPBT-102-H2-T-D-K](#) [IPBT-104-H1-T-S-RA-K](#)  
[IPBT-104-H1-T-D-RA-K](#) [IPBT-105-H1-T-D-RA-GP](#) [IPBT-102-H6-T-D-GP](#) [IPBT-102-H2-TM-D-K](#) [IPBT-108-H1-TM-D-](#)  
[RA-K](#) [IPBT-112-H1-T-D-K](#) [IPBT-112-H1-T-D-RA-K](#) [IPBT-102-H2-T-S-GP](#) [IPBT-103-H4-T-D-GP](#) [IPBT-105-H2-TM-D-K](#)  
[IPBT-107-H1-T-D-GP](#) [IPBT-104-H2-T-D-GP](#) [IPBT-114-H1-T-D-RA-GP](#) [IPBT-114-H1-T-D-GP](#) [IPBT-108-H1-T-D-GP](#)  
[IPBT-109-H1-T-D-GP](#) [IPBT-115-H1-T-D-GP](#) [IPBT-112-H1-T-D-GP](#) [IPBT-106-H1-T-D-GP](#) [IPBT-115-H2-T-D-GP](#) [IPBT-](#)  
[106-H1-T-D-RA-GP](#) [IPBT-106-H2-T-D-GP](#) [IPBT-109-H2-T-D-GP](#) [IPBT-113-H1-T-D-GP](#) [IPBT-104-H1-TM-D-GP](#) [IPBT-](#)  
[110-H1-TM-D-GP](#) [IPBT-112-H2-TM-D-GP](#) [IPBT-102-H2-T-D-GP](#) [IPBT-104-H1-T-D-GP](#) [IPBT-111-H1-T-D-GP](#) [IPBT-](#)  
[107-H1-T-D-RA-GP](#) [IPBT-107-H2-T-D-GP](#) [IPBT-108-H2-T-D-GP](#) [IPBT-102-H1-TM-D-GP](#) [IPBT-110-H1-TM-D-RA-GP](#)  
[IPBT-112-H2-T-D-GP](#) [IPBT-113-H1-T-D-RA-GP](#) [IPBT-115-H1-TM-D-GP](#) [IPBT-108-H1-T-S-GP](#) [IPBT-103-H2-TM-D-](#)  
[GP](#) [IPBT-106-H2-TM-D-GP](#) [IPBT-108-H2-TM-D-GP](#) [IPBT-103-H2-T-D-GP](#) [IPBT-109-H1-T-D-RA-GP](#) [IPBT-114-H2-T-](#)  
[D-GP](#) [IPBT-111-H1-T-D-RA-GP](#) [IPBT-111-H2-T-D-GP](#) [IPBT-107-H1-TM-D-GP](#) [IPBT-108-H1-T-S-RA-GP](#) [IPBT-115-](#)  
[H6-T-D-GP](#) [IPBT-106-H1-T-S-RA-GP](#) [IPBT-109-H4-T-D-GP](#) [IPBT-110-H3-T-D-GP](#) [IPBT-104-H1-T-S-RA-GP](#)