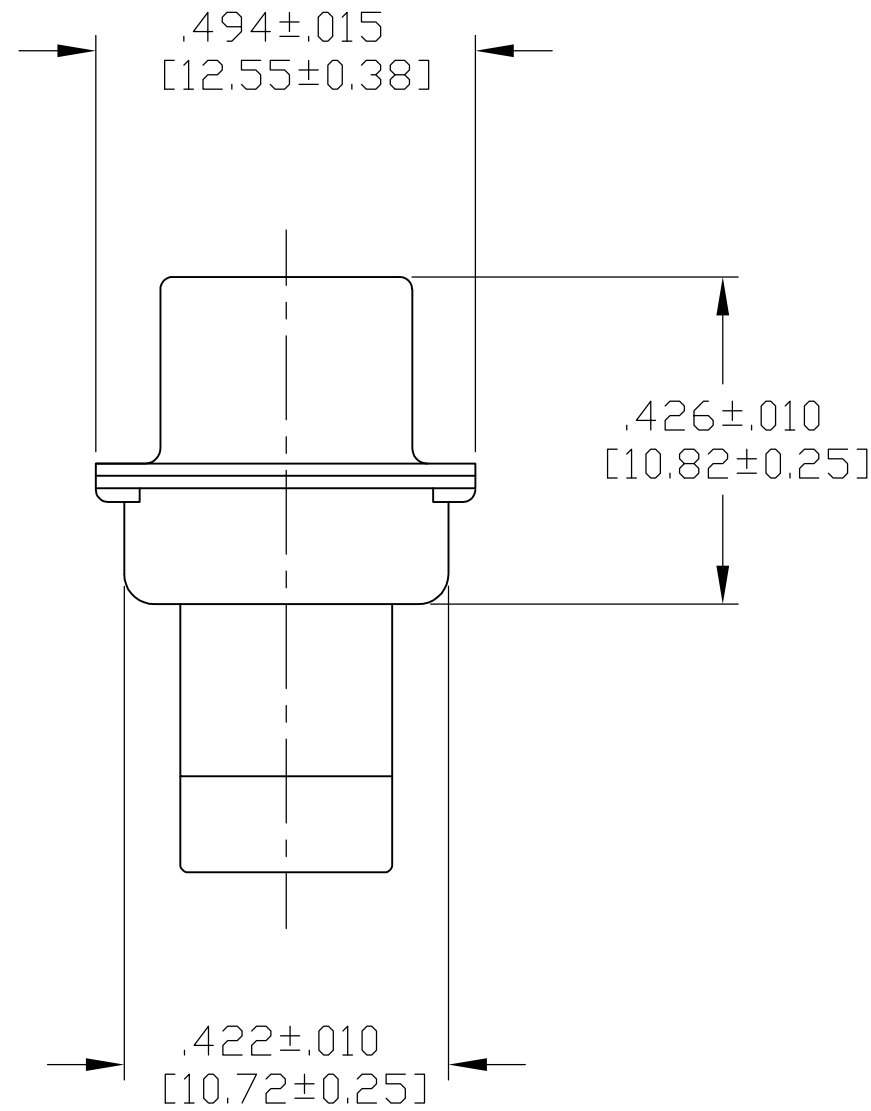
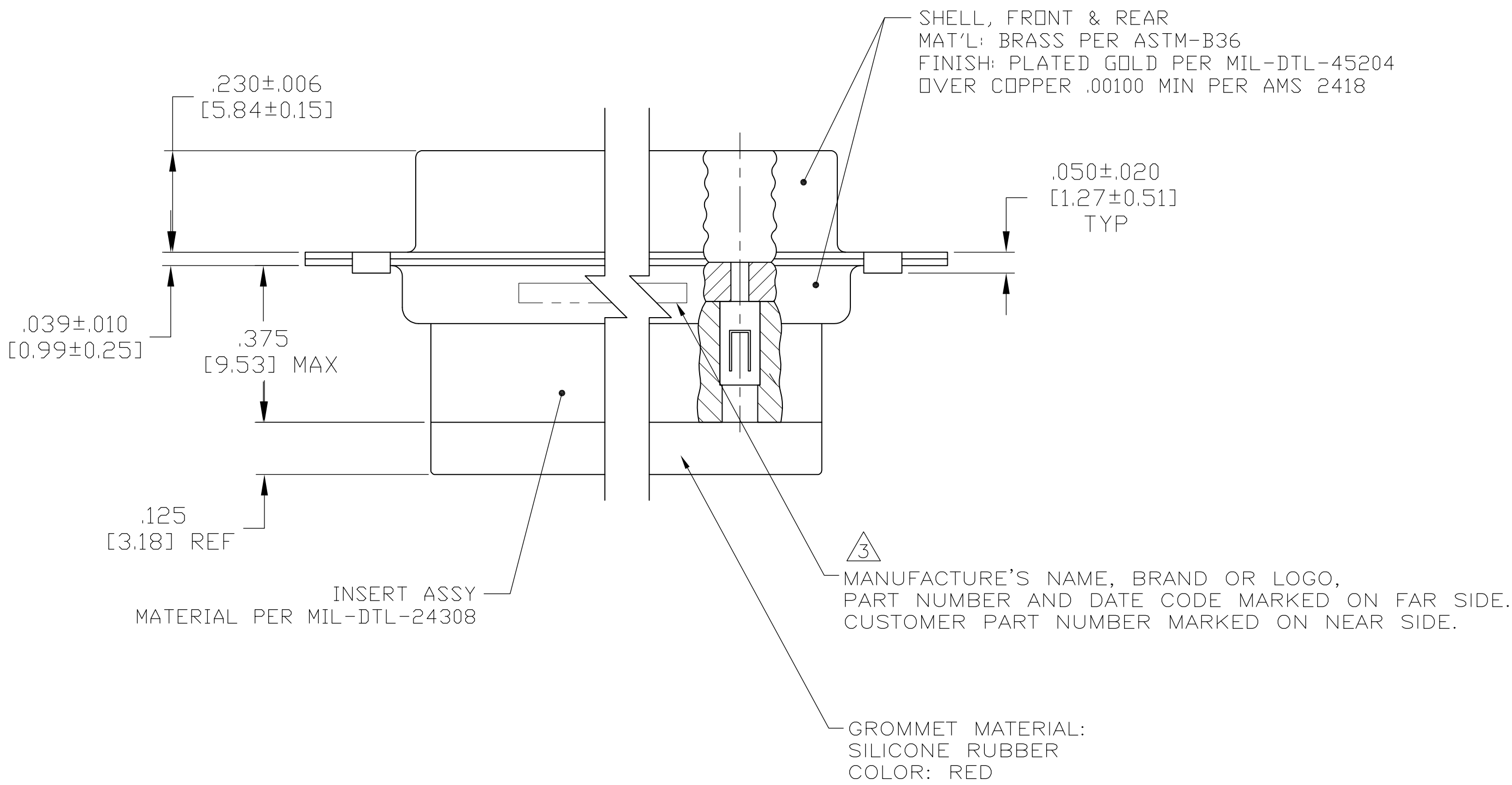


- THIS CONNECTOR ASSEMBLY IS SUPPLIED WITH Be Cu CONTACT RETENTION CLIPS INSTALLED IN THE INSERT ASSEMBLY.
 - THIS CONNECTOR ASSEMBLY MATES WITH ANY PLUG CONNECTOR WITH THE SAME INSERT ARRANGEMENT AND DIMENSIONAL REQUIREMENTS PER MIL-C-24308.
 - MARKED WITH .047 [1.19]-.062 [1.57] HIGH CHARACTERS. FAR SIDE REFERS TO THE WIDE SIDE OF THE KEYSTONE. NEAR SIDE REFERS TO THE NARROW SIDE OF THE KEYSTONE.
 - MAXIMUM WIRE INSULATION TO BE USED WITH THIS CONNECTOR ASSEMBLY IS .054 [1.37] DIAMETER.
- SPECIAL REQUIREMENTS PER BOEING 1A01 DOCUMENT.
- BUILT TO ORDER, NO INVENTORY OF THIS PART NUMBER IS TO BE KEPT, SINGLE LOT DATE CODE REQUIRED.



<div>6</div> <div>7</div>	1A01-029PHW	1-211641-1
--	---	211641-4
<div>6</div> <div>7</div>	1A01-029PHA	211641-1
REMARKS	CUSTOMER MARKING	PART NUMBER

THIS DRAWING IS A CONTROLLED DOCUMENT.		DWN C.C.THOMAS 4-9-09	TE Connectivity	
		CHK R. LEASE 4-9-09		
DIMENSIONS: INCHES		TOLERANCES UNLESS OTHERWISE SPECIFIED:	NAME	PLUG ASSY.,AMPLIMITE,37 POSN.,SIZE 4, SERIES 109 WITH GROMMET, NON-MAGNETIC
		0 PLC ± -	PRODUCT SPEC	
		1 PLC ± -	APPLICATION SPEC	
MATERIAL SEE CALLOUTS		2 PLC ± -	WEIGHT	—
		3 PLC ± .005 [0.13]	SCALE	4:1
		4 PLC ± -	SHEET	1 of 1
		ANGLES ± -	REV	H
		SEE CALLOUTS	CUSTOMER DRAWING	

Mouser Electronics

Authorized Distributor

Click to View Pricing, Inventory, Delivery & Lifecycle Information:

[TE Connectivity:](#)

[211641-1](#)