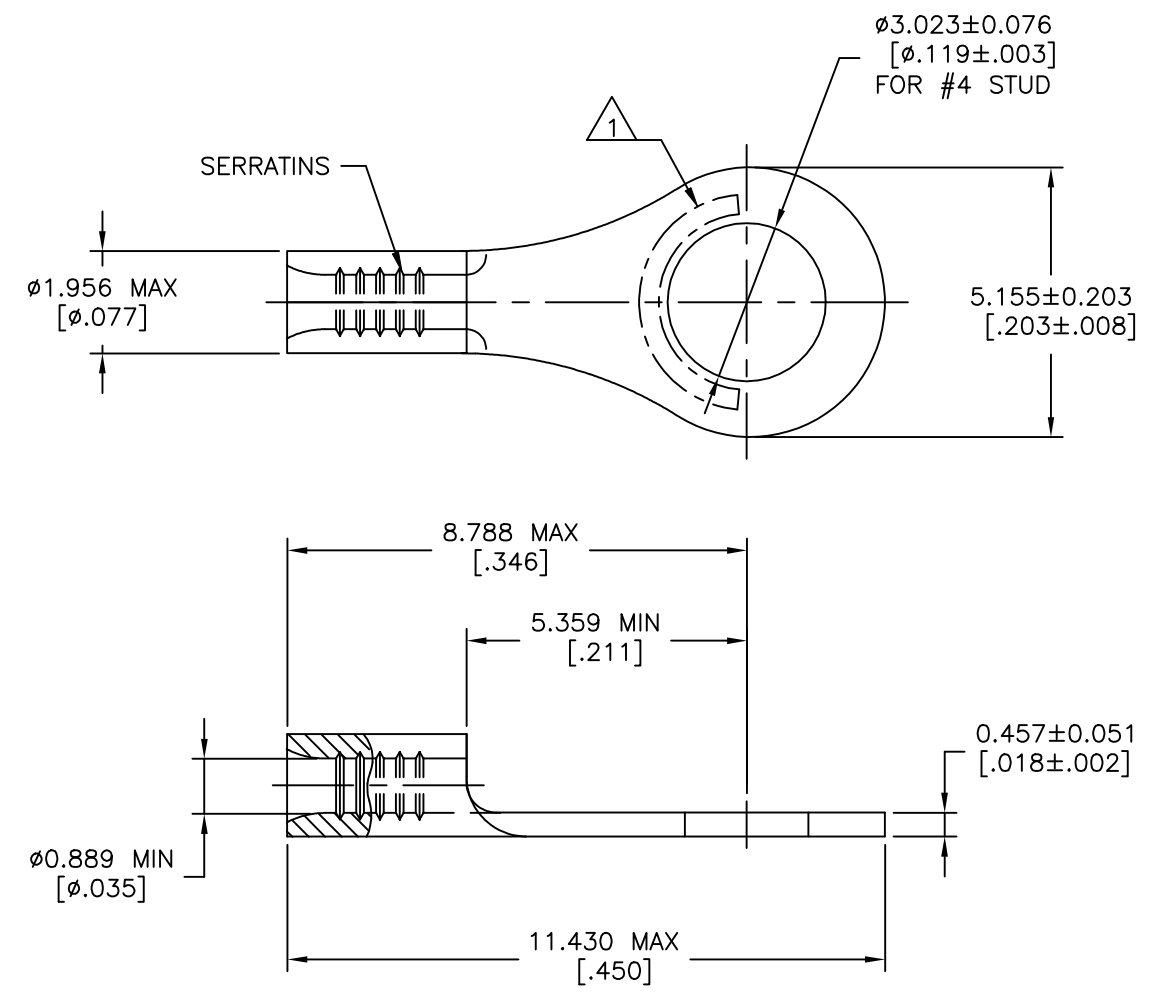


REVISIONS				
P	LTR	DESCRIPTION	DATE	APVD
D2		REVISED PER ECO-11-010839	25MAY11	RK HMR
D3		REVISED PER ECO-18-002614	28FEB2018	RS DR

**AMP**  
 WIRE RANGE  
 26-22 AWG  
 STRANDED



- 1 STAMP AMP APPROX AS SHOWN
- 2 CLEANED, UNPLATED
- 3 TIN PLATE 0.00254[.000100]  
MIN EXT THK PER ASTM B545

<b>AMP INCORPORATED CUSTOMER SERVICE SYSTEMS</b>		MAX RECOMMENDED OPERATING TEMPERATURE: 170° C[338°F] MAX
FOR ADDITIONAL PRODUCT INFORMATION OR COPIES OF DRAWINGS AND TECHNICAL DOCUMENTS	PRODUCT INFORMATION CENTER 1-800-522-6752	VOLTAGE RATING: NOT APPLICABLE
FOR APPLICATION TOOLING INFORMATION	TOOLING ASSISTANCE CENTER 1-800-722-1111	WIRE CROSS SECTIONAL AREA RANGE: 0.1-0.41mm <sup>2</sup> [202-810] CIR MILS STRANDED
FOR ORDER ENTRY	1-800-526-5142	

PRELIMINARY	5000	TAPE & REEL	3	31428-2
	1000	LOOSE PIECE	2	31428-1
	1000	LOOSE PIECE	3	31428
QTY		PACKAGE TYPE	FINISH	PART NO

THIS DRAWING IS A CONTROLLED DOCUMENT.		DWN TA BRINKMAN 2-2-93	<b>STE</b> TE Connectivity Ltd.	
DIMENSIONS: mm [INCHES]		CHK DA PATTERSON 2-2-93		
TOLERANCES UNLESS OTHERWISE SPECIFIED:		APVD DE MILLER 2-2-93	NAME TERMINAL, RING TONGUE, BUDGET 26-22 AWG	
0 PLC ± - 1 PLC ± - 2 PLC ± - 3 PLC ± 0.127[.005] 4 PLC ± -		PRODUCT SPEC -	APPLICATION SPEC -	
MATERIAL COPPER PER ASTM B-152 ANNEALED		FINISH -	SIZE A2	CAGE CODE 00779
			DRAWING NO C-31428	RESTRICTED TO -
			WEIGHT -	CUSTOMER DRAWING
			SCALE 10:1	SHEET 1 of 1
				REV D3