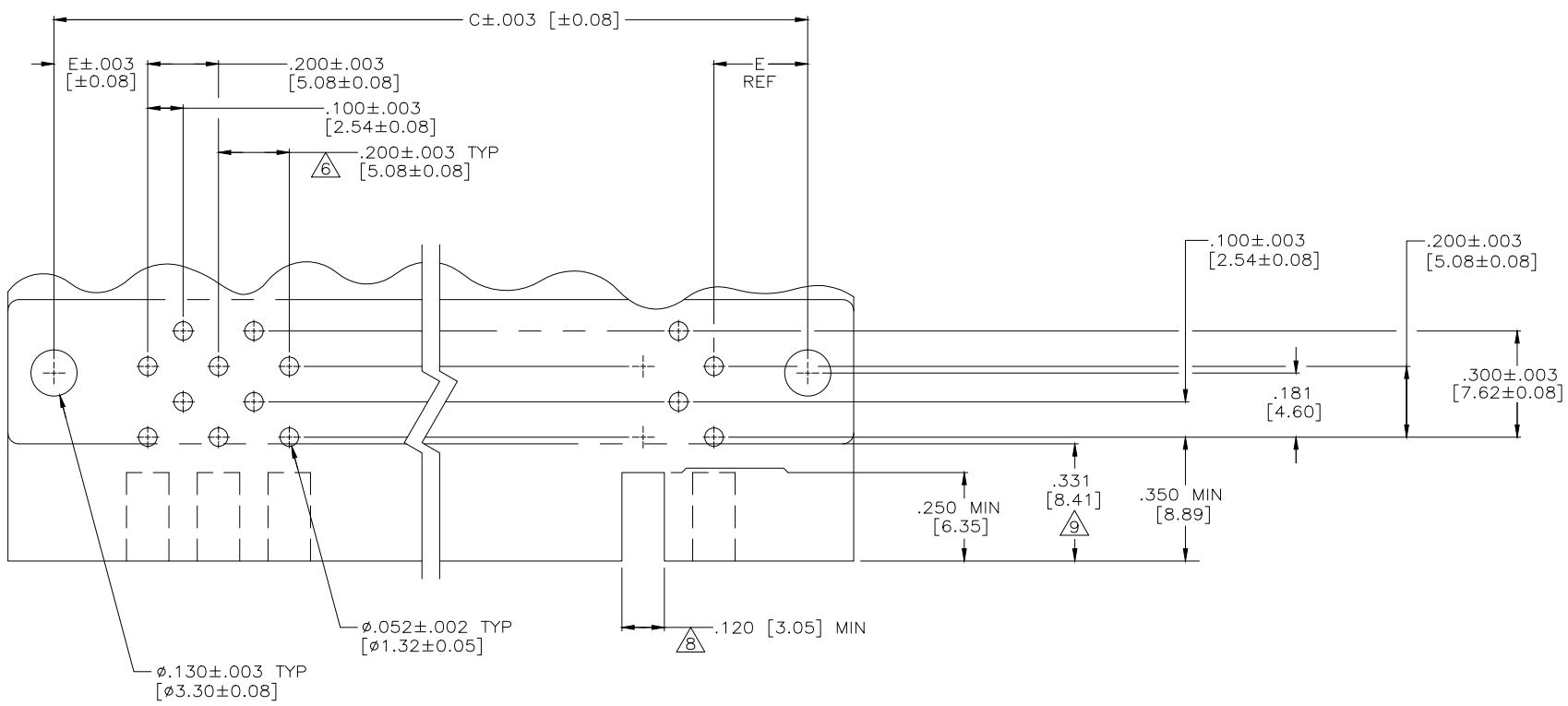
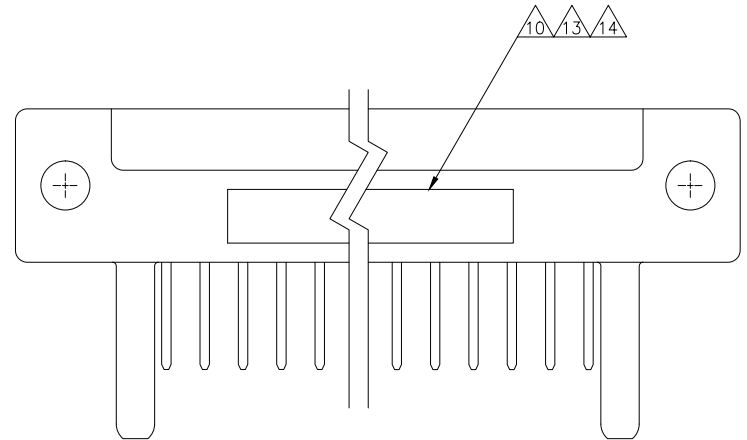
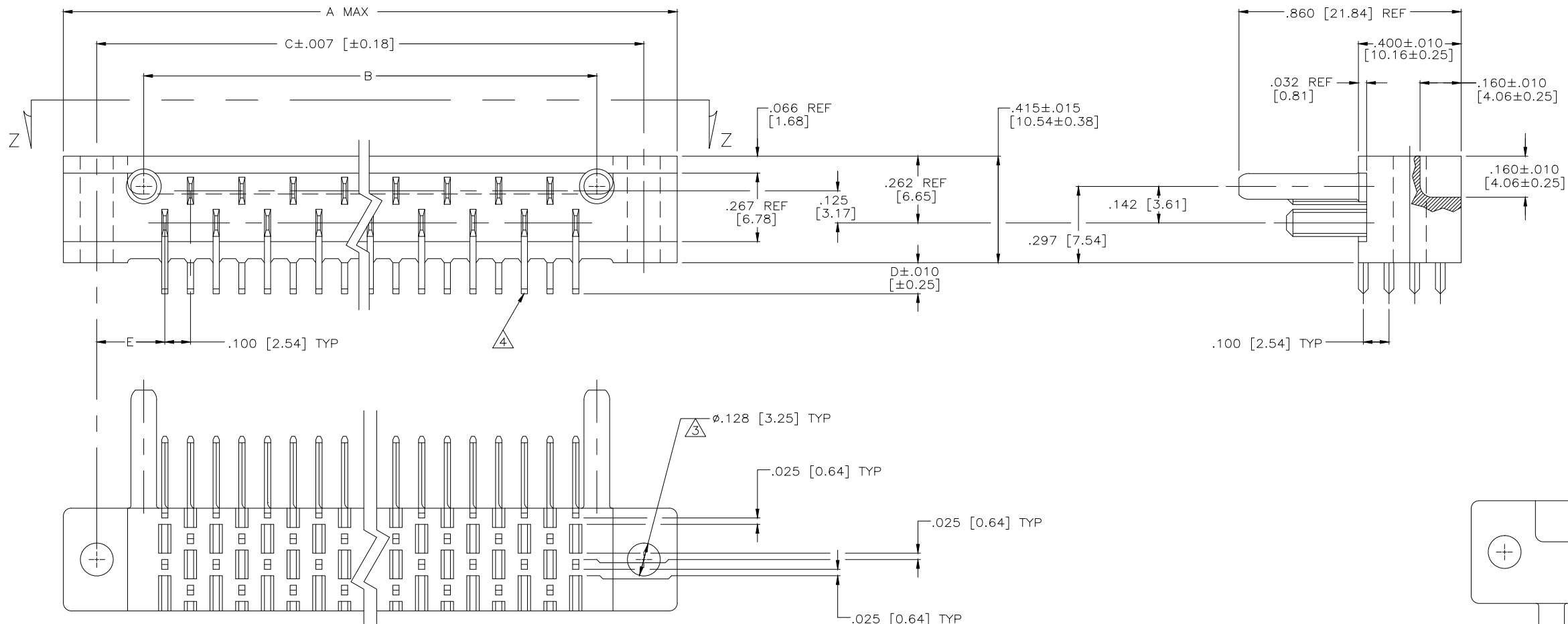


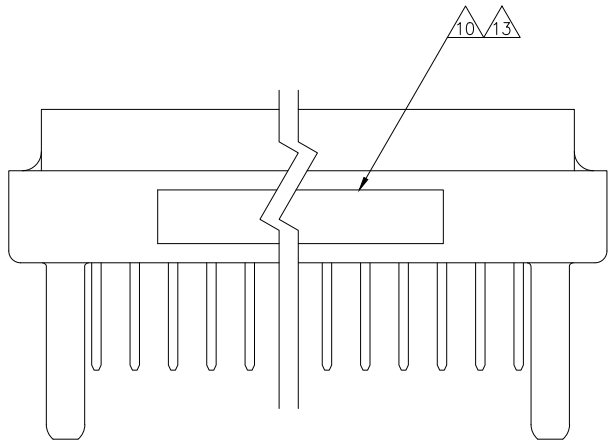
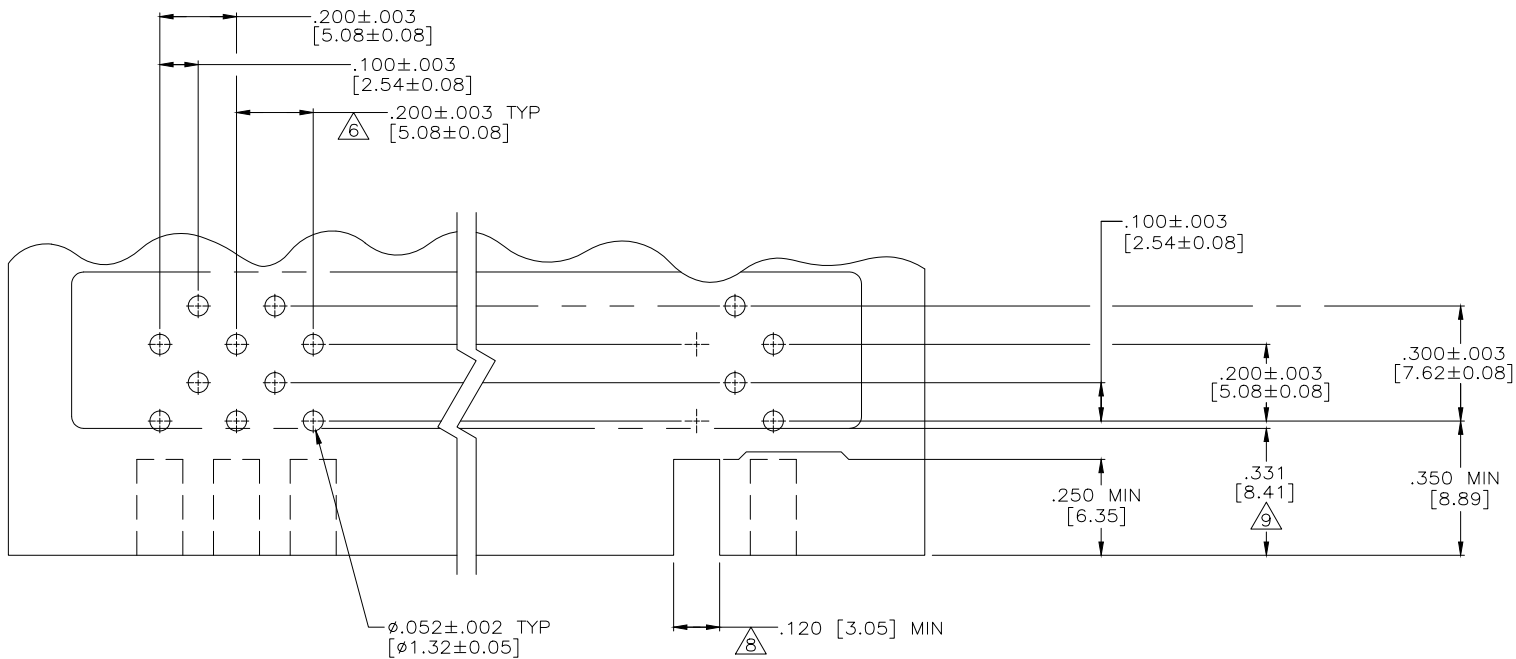
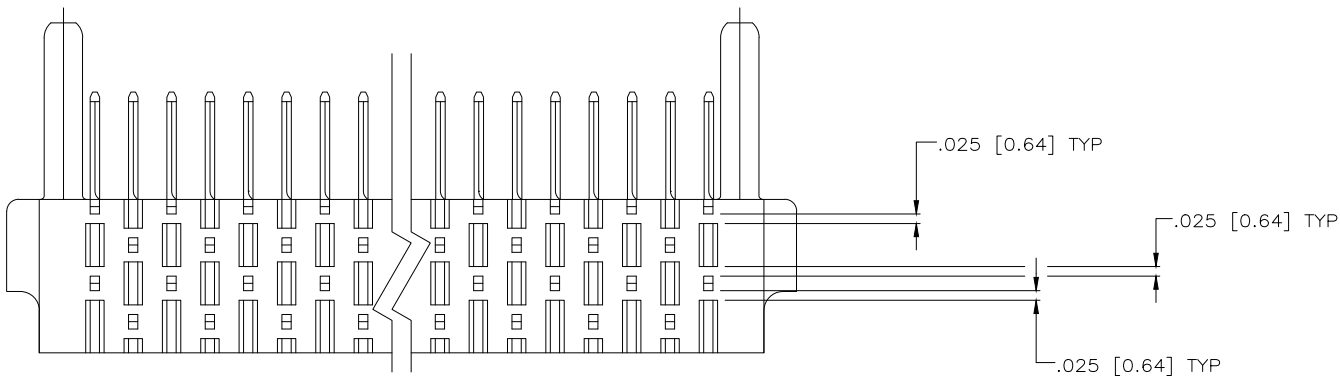
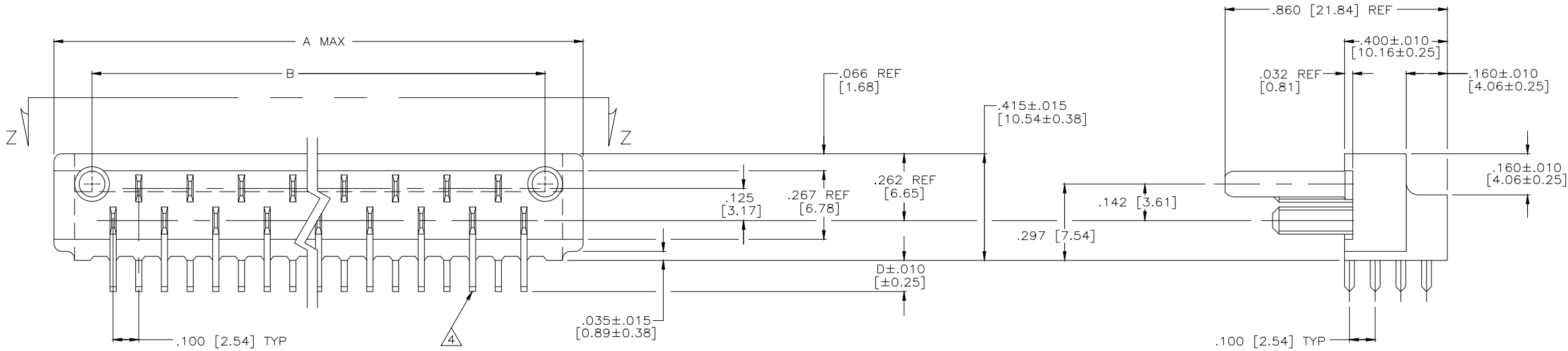
| LOC |    | DIST |     | REVISIONS                 |  |           |     |      |
|-----|----|------|-----|---------------------------|--|-----------|-----|------|
| DF  | HO | P    | LTR | DESCRIPTION               |  | DATE      | DWN | APVD |
|     |    |      | AW  | REVISED PER ECO-15-008962 |  | 30JUN2015 | RS  | CT   |



RECOMMENDED P.C. BOARD LAYOUT

|  |  |                                     |  |  |
|--|--|-------------------------------------|--|--|
| THIS DRAWING IS A CONTROLLED DOCUMENT. |  | DWN<br>RAGHAV SATISH<br>30JUN2015   | TE Connectivity                            |  |
| DIMENSIONS:<br>INCHES                  |  | OK<br>CHARLES THOMAS<br>30JUN2015   | NAME<br>ASSEMBLY, AMP BLADE<br>TAB HOUSING |  |
| TOLERANCES UNLESS OTHERWISE SPECIFIED: |  | APVD<br>CHARLES THOMAS<br>30JUN2015 | RESTRICTED TO                              |  |
| 0 PLC ± -                              |  | PRODUCT SPEC                        | SIZE                                       |  |
| 1 PLC ± -                              |  | APPLICATION SPEC                    | CAGE CODE                                  |  |
| 2 PLC ± -                              |  | —                                   | DRAWING NO                                 |  |
| 3 PLC ± -.005 [0.13]                   |  | —                                   | A1 00779                                   |  |
| 4 PLC ± -                              |  | —                                   | C=582152                                   |  |
| ANGLES                                 |  | —                                   | WEIGHT                                     |  |
| FINISH                                 |  | —                                   | CUSTOMER DRAWING                           |  |
| 5 - 7                                  |  | —                                   | SCALE 4:1                                  |  |
|  |  | —                                   | SHEET 1 of 3                               |  |
|  |  | —                                   | REV AW                                     |  |

| LOC |    | DIST |     | REVISIONS   |      |     |      |  |
|-----|----|------|-----|-------------|------|-----|------|--|
| DF  | HO | P    | LTR | DESCRIPTION | DATE | DWN | APVD |  |
|     |    |      | —   | SEE SHEET 1 | —    | —   | —    |  |



VIEW Z-Z

RECOMMENDED P.C. BOARD LAYOUT

|  |  |                                     |  |  |
|--|--|-------------------------------------|--|--|
| THIS DRAWING IS A CONTROLLED DOCUMENT. |  | DWN<br>RAGHAV SATISH<br>30JUN2015   | TE Connectivity                            |  |
| DIMENSIONS:<br>INCHES                  |  | CHK<br>CHARLES THOMAS<br>30JUN2015  | NAME<br>ASSEMBLY, AMP BLADE<br>TAB HOUSING |  |
| TOLERANCES UNLESS OTHERWISE SPECIFIED: |  | APVD<br>CHARLES THOMAS<br>30JUN2015 | RESTRICTED TO                              |  |
| 0 PLC ± -                              |  | PRODUCT SPEC                        | SIZE<br>A1                                 |  |
| 1 PLC ± -                              |  | APPLICATION SPEC                    | CAGE CODE<br>00779                         |  |
| 2 PLC ± -                              |  | WEIGHT                              | DRAWING NO<br>582152                       |  |
| 3 PLC ± .005 [0.13]                    |  | CUSTOMER DRAWING                    | SCALE<br>4:1                               |  |
| 4 PLC ± -                              |  |                                     | SHEET<br>2                                 |  |
| ANGLES<br>FINISH                       |  |                                     | OF<br>3                                    |  |
| MATERIAL<br>SEE SHEET 1                |  |                                     | REV<br>AW                                  |  |

8

7

6

5

4

3

2

1

THIS DRAWING IS UNPUBLISHED.

RELEASED FOR PUBLICATION

ALL RIGHTS RESERVED.

LOC

DIST

DF

HO

REVISIONS

| P | LTR | DESCRIPTION | DATE | DWN | APVD |
|---|-----|-------------|------|-----|------|
| - | -   | SEE SHEET 1 | -    | -   | -    |

WITH MOUNTING HOLES

| PART NO.   | NO OF CONT. | A     | B     | C     | D    | E    | P.C. BD. THICKNESS | NOTE | MARKING |
|------------|-------------|-------|-------|-------|------|------|--------------------|------|---------|
| 3-582152-1 | 17          | 2.390 | 1.764 | 2.130 | .120 | .265 | .0625              |      | -       |
| 3-582152-2 | 23          | 2.990 | 2.364 | 2.730 | .120 | .265 | .0625              |      | -       |
| 3-582152-3 | 29          | 3.590 | 2.964 | 3.330 | .120 | .265 | .0625              |      | -       |
| 3-582152-4 | 35          | 4.190 | 3.564 | 3.930 | .120 | .265 | .0625              |      | -       |
| 3-582152-5 | 41          | 4.790 | 4.164 | 4.530 | .120 | .265 | .0625              |      | -       |
| 3-582308-1 | 47          | 5.623 | 4.764 | 5.363 | .120 | .381 | .0625              |      | -       |
| 582852-4   | 41          | 4.790 | 4.164 | 4.530 | .120 | .265 | .0625              |      | -       |
| 4-582308-1 | 47          | 5.623 | 4.764 | 5.363 | .120 | .381 | .0625              |      | -       |
| 4-582152-1 | 17          | 2.390 | 1.764 | 2.130 | .120 | .265 | .0625              |      | -       |
| 4-582152-3 | 29          | 3.590 | 2.964 | 3.330 | .120 | .265 | .0625              |      | -       |
| 5-582843-0 | 23          | 2.990 | 2.364 | 2.730 | .120 | .265 | .0625              |      | -       |
| 5-582843-1 | 47          | 5.623 | 4.764 | 5.363 | .120 | .381 | .0625              |      | -       |
| 582843-2   | 17          | 2.390 | 1.764 | 2.130 | .120 | .265 | .0625              |      | -       |
| 582843-3   | 23          | 2.990 | 2.364 | 2.730 | .120 | .265 | .0625              |      | -       |
| 582843-4   | 29          | 3.590 | 2.964 | 3.330 | .120 | .265 | .0625              |      | -       |
| 582843-5   | 35          | 4.190 | 3.564 | 3.930 | .120 | .265 | .0625              |      | -       |
| 582843-6   | 41          | 4.790 | 4.164 | 4.530 | .120 | .265 | .0625              |      | -       |
| 582843-7   | 47          | 5.623 | 4.764 | 5.363 | .120 | .381 | .0625              |      | -       |
| 582907-1   | 29          | 3.590 | 2.964 | 3.330 | .120 | .265 | .0625              |      | -       |
| 6-582152-1 | 17          | 2.390 | 1.764 | 2.130 | .152 | .265 | .0937              |      | -       |
| 6-582152-2 | 23          | 2.990 | 2.364 | 2.730 | .152 | .265 | .0937              |      | -       |
| 6-582152-3 | 29          | 3.590 | 2.964 | 3.330 | .152 | .265 | .0937              |      | -       |
| 6-582152-4 | 35          | 4.190 | 3.564 | 3.930 | .152 | .265 | .0937              |      | -       |
| 6-582152-5 | 41          | 4.790 | 4.164 | 4.530 | .152 | .265 | .0937              |      | -       |
| 6-582308-1 | 47          | 5.623 | 4.764 | 5.363 | .152 | .381 | .0937              |      | -       |
| 7-582308-1 | 47          | 5.623 | 4.764 | 5.363 | .152 | .381 | .0937              |      | -       |
| 1-582843-4 | 17          | 2.390 | 1.764 | 2.130 | .152 | .265 | .0937              |      | -       |
| 582843-1   | 23          | 2.990 | 2.364 | 2.730 | .152 | .265 | .0937              |      | -       |
| 1-582843-5 | 29          | 3.590 | 2.964 | 3.330 | .152 | .265 | .0937              |      | -       |
| 1-582843-6 | 35          | 4.190 | 3.564 | 3.930 | .152 | .265 | .0937              |      | -       |
| 1-582843-7 | 41          | 4.790 | 4.164 | 4.530 | .152 | .265 | .0937              |      | -       |
| 1-582843-8 | 47          | 5.623 | 4.764 | 5.363 | .152 | .381 | .0937              |      | -       |
| 9-582152-1 | 17          | 2.390 | 1.764 | 2.130 | .183 | .265 | .125               |      | -       |
| 9-582152-2 | 23          | 2.990 | 2.364 | 2.730 | .183 | .265 | .125               |      | -       |
| 9-582152-3 | 29          | 3.590 | 2.964 | 3.330 | .183 | .265 | .125               |      | -       |
| 9-582152-4 | 35          | 4.190 | 3.564 | 3.930 | .183 | .265 | .125               |      | -       |
| 9-582152-5 | 41          | 4.790 | 4.164 | 4.530 | .183 | .265 | .125               |      | -       |
| 9-582308-1 | 47          | 5.623 | 4.764 | 5.363 | .183 | .381 | .125               |      | -       |
| 2-582843-5 | 17          | 2.390 | 1.764 | 2.130 | .183 | .265 | .125               |      | -       |
| 2-582843-6 | 23          | 2.990 | 2.364 | 2.730 | .183 | .265 | .125               |      | -       |
| 2-582843-7 | 29          | 3.590 | 2.964 | 3.330 | .183 | .265 | .125               |      | -       |
| 2-582843-8 | 35          | 4.190 | 3.564 | 3.930 | .183 | .265 | .125               |      | -       |
| 2-982843-9 | 41          | 4.790 | 4.164 | 4.530 | .183 | .265 | .125               |      | -       |
| 3-582843-0 | 47          | 5.623 | 4.764 | 5.363 | .183 | .381 | .125               |      | -       |

WITHOUT MOUNTING HOLES

| PART NO.   | NO OF CONT. | A     | B     | C | D    | E | P.C. BD. THICKNESS | NOTE | MARKING |
|------------|-------------|-------|-------|---|------|---|--------------------|------|---------|
| 3-582152-6 | 17          | 2.070 | 1.764 | - | .120 | - | .0625              |      | -       |
| 3-582152-7 | 23          | 2.670 | 2.364 | - | .120 | - | .0625              |      | -       |
| 3-582152-8 | 29          | 3.270 | 2.964 | - | .120 | - | .0625              |      | -       |
| 3-582152-9 | 35          | 3.870 | 3.564 | - | .120 | - | .0625              |      | -       |
| 3-582152-0 | 41          | 4.470 | 4.164 | - | .120 | - | .0625              |      | -       |
| 3-582308-2 | 47          | 5.070 | 4.764 | - | .120 | - | .0625              |      | -       |
| 2-582152-9 | 35          | 3.870 | 3.564 | - | .120 | - | .0625              |      | -       |
| 582152-1   | 23          | 2.670 | 2.364 | - | .120 | - | .0625              |      | -       |
| 582152-2   | 47          | 5.070 | 4.764 | - | .120 | - | .0625              |      | -       |
| 582152-3   | 35          | 3.870 | 3.564 | - | .120 | - | .0625              |      | -       |
| 582843-8   | 17          | 2.070 | 1.764 | - | .120 | - | .0625              |      | -       |
| 582843-9   | 23          | 2.670 | 2.364 | - | .120 | - | .0625              |      | -       |
| 1-582843-0 | 29          | 3.270 | 2.964 | - | .120 | - | .0625              |      | -       |
| 1-582843-1 | 35          | 3.870 | 3.564 | - | .120 | - | .0625              |      | -       |
| 1-582843-2 | 41          | 4.470 | 4.164 | - | .120 | - | .0625              |      | -       |
| 1-582843-3 | 47          | 5.070 | 4.764 | - | .120 | - | .0625              |      | -       |
| 6-582152-6 | 17          | 2.070 | 1.764 | - | .152 | - | .0937              |      | -       |
| 6-582152-7 | 23          | 2.670 | 2.364 | - | .152 | - | .0937              |      | -       |
| 6-582152-8 | 29          | 3.270 | 2.964 | - | .152 | - | .0937              |      | -       |
| 6-582152-9 | 35          | 3.870 | 3.564 | - | .152 | - | .0937              |      | -       |
| 6-582152-0 | 41          | 4.470 | 4.164 | - | .152 | - | .0937              |      | -       |
| 6-582308-2 | 47          | 5.070 | 4.764 | - | .152 | - | .0937              |      | -       |
| 1-582843-9 | 17          | 2.070 | 1.764 | - | .152 | - | .0937              |      | -       |
| 2-582843-0 | 23          | 2.670 | 2.364 | - | .152 | - | .0937              |      | -       |
| 2-582843-1 | 29          | 3.270 | 2.964 | - | .152 | - | .0937              |      | -       |
| 2-582843-2 | 35          | 3.870 | 3.564 | - | .152 | - | .0937              |      | -       |
| 2-582843-3 | 41          | 4.470 | 4.164 | - | .152 | - | .0937              |      | -       |
| 2-582843-4 | 47          | 5.070 | 4.764 | - | .152 | - | .0937              |      | -       |
| 9-582152-6 | 17          | 2.070 | 1.764 | - | .183 | - | .125               |      | -       |
| 9-582152-7 | 23          | 2.670 | 2.364 | - | .183 | - | .125               |      | -       |
| 9-582152-8 | 29          | 3.270 | 2.964 | - | .183 | - | .125               |      | -       |
| 9-582152-9 | 35          | 3.870 | 3.564 | - | .183 | - | .125               |      | -       |
| 9-582152-0 | 41          | 4.470 | 4.164 | - | .183 | - | .125               |      | -       |
| 9-582308-2 | 47          | 5.070 | 4.764 | - | .183 | - | .125               |      | -       |
| 3-582843-1 | 17          | 2.070 | 1.764 | - | .183 | - | .125               |      | -       |
| 3-582843-2 | 23          | 2.670 | 2.364 | - | .183 | - | .125               |      | -       |
| 3-582843-3 | 29          | 3.270 | 2.964 | - | .183 | - | .125               |      | -       |
| 3-582843-4 | 35          | 3.870 | 3.564 | - | .183 | - | .125               |      | -       |
| 3-582843-5 | 41          | 4.470 | 4.164 | - | .183 | - | .125               |      | -       |
| 3-582843-6 | 47          | 5.070 | 4.764 | - | .183 | - | .125               |      | -       |

1. TAB-HOUSING ASSEMBLY MATES WITH AMP P/N 3-582151 SERIES.

2. BLADE CENTER LINE TO BE MEASURED FROM THE CENTER LINE FORMED BY THE ALIGNMENT PINS & AS LONG AS THE BLADES FALL WITHIN TOLERANCES INDICATED, THE ALLOWABLE WARPAGE IS INDEPENDENT OF THE BLADES & BECOMES A MEASUREMENT OF THE OUTSIDE SURFACE OF THE TAB-HOUSING & DOES NOT EFFECT THE MATING OF THIS TAB-HOUSING WITH 582151.

3. MOUNTING HOLES.

4. POST TO BE SOLDER DIPPED. CONN. MUST MEET REQUIREMENTS OF AMP SPEC 109-11-1.

5. CONTACT MATL.; GILDING METAL. GOLD OVER NICKEL.

6. TOLERANCE NON CUMULATIVE.

7. TAB-HOUSING MATL.; DIALLYL PHTHALATE, GLASS FILLED PER MIL-M-14, TYPE S.D.G.-F. COLOR; GREEN.

8. CUT OUT FOR KEYING BOSS, LOCATED WHERE REQD. (OPTIONAL)

9. FROM EDGE OF P.C. BOARD TO FACE OF TAB-HOUSING.

10. TYCO ELECTRONICS P/N NOT TO BE MARKED ON PART. AMP, DATE CODE, AND CUSTOMER PART NO. MARKED PER TABLE.

11. CONTACT FINISH; .0001 THK. GOLD, OVER NICKEL.

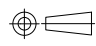
12. TAB-HOUSING MATL.; COLOR, GREY.

13. AMP, TYCO ELECTRONICS PART NO. AND DATE CODE MARKED PER TABLE IN THIS APPROX AREA.

14. CUSTOMER PART NO. MARKED PER TABLE IN THIS APPROX AREA.

THIS DRAWING IS A CONTROLLED DOCUMENT.

DIMENSIONS: INCHES



MATERIAL SEE SHEET 1

TOLERANCES UNLESS OTHERWISE SPECIFIED:

0. PLC ± .005  
1. PLC ± .005  
2. PLC ± .005  
3. PLC ± .005  
4. PLC ± .005  
ANGLES ± .005

SEE SHEET 1

DWN RAGHAV SATISH 30JUN2015  
CHK CHARLES THOMAS 30JUN2015  
APVD CHARLES THOMAS 30JUN2015

PRODUCT SPEC

APPLICATION SPEC

WEIGHT -

CUSTOMER DRAWING

TE Connectivity

ASSEMBLY, AMP BLADE TAB HOUSING

SIZE A1 CAGE CODE 00779 DRAWING NO. 582152

RESTRICTED TO -

SCALE 4:1 SHEET 3 OF 3 REV AV

4806 (3/11)

# Mouser Electronics

Authorized Distributor

Click to View Pricing, Inventory, Delivery & Lifecycle Information:

[TE Connectivity:](#)

[3-582152-4](#)