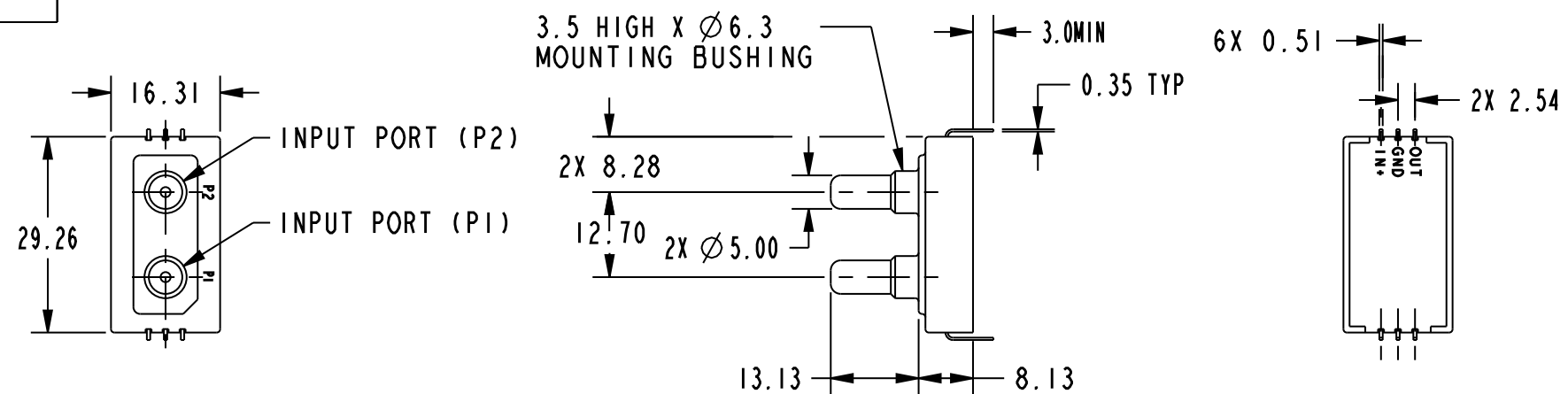
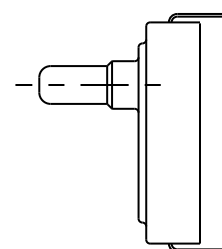
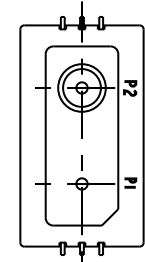


HONEYWELL
PART NUMBER

REV	DOCUMENT	CHANGED BY	CHECK
10	0064547	NR 20MAY10	RS



TYPE "A" & "D" (DIFFERENTIAL)
MOUNTING TYPE = "T"



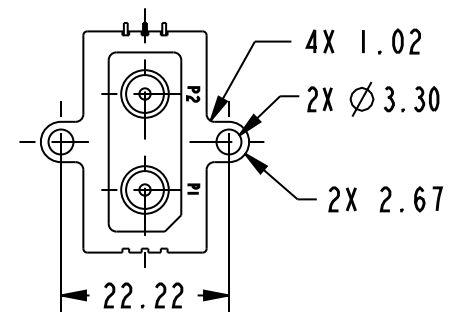
TYPE "G" (GAGE)
MOUNTING TYPE = "T"

CATALOG LISTING	TYPE	OPERATING PRESSURE RANGE
Ⓚ	G	0 TO 15 PSIG
Ⓞ	G	0 TO 15 PSIG
I85PC15AH2	A	0 TO 15 PSIA
I85PC15DT	D	0 TO 15 PSID
Ⓚ	D	0 TO 15 PSID
I85PC15AH	A	0 TO 15 PSIA
I85PC15AT	A	0 TO 15 PSIA
I86PC15DH	D	0 TO 15 PSID
I86PC15DT	D	0 TO 15 PSID

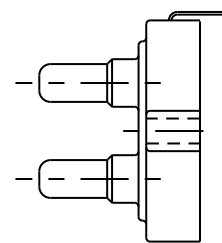
MOUNTING TYPE
H = HOUSING
T = TERMINAL

GENERAL OPERATING CHARACTERISTICS	
PRESSURE RANGE	0 TO 775mm Hg (0 TO 15 PSI)
OVERPRESSURE	2327mm Hg (45 PSI)
TEMPERATURE RANGES	STORAGE -55 TO +125°C OPERATE -40 TO +85°C COMPENSATED 0 TO +50°C
SUPPLY VOLTAGE	7 TO 16 VDC
SUPPLY CURRENT	6mA MAX WITH 10K LOAD
OUTPUT VOLTAGE	PROPORTIONAL TO SUPPLY VOLTAGE OVER ABOVE RECOMMENDED RANGE
SHORT CIRCUIT LIMIT	MAY BE SHORTED INDEFINITELY
OUTPUT RIPPLE	NONE
GROUND REFERENCE	SUPPLY AND OUTPUT ARE COMMON

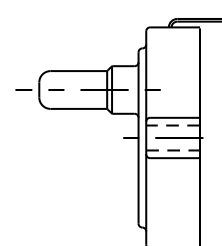
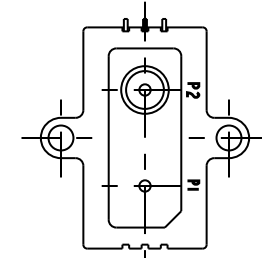
ELECTRICAL PERFORMANCE AT 25°C AND 8.00 ± .01 VDC SUPPLY	
OUTPUT VOLTAGE	
I84PC15G NULL (0 PSIG)	1.000±.050 VDC
FULL SCALE (-12.5 PSIG)	5.900 VDC TYP P1 > P2
SPAN	4.167±.050 VDC
I85PC15D NULL (0 PSIG)	1.000±.050 VDC
FULL SCALE (15 PSIG)	6.000 VDC TYP P2 > P1
SCAN	5.000±.050 VDC
I86PC15D NULL (0 PSIG)	3.500±.050 VDC
FULL SCALE (15 PSIG)	6.000 VDC TYP P2 > P1
OUTPUT @ 15 PSIG	1.000 VDC TYP P1 > P2
SPAN (0 TO 15 PSIG) P2 > P1	2.500±.050 VDC
SENSITIVITY	333.3 mV/PSI TYP
LINEARITY (B.F.S.L.)	1.00% SPAN MAX P1 > P2 2.00% SPAN MAX P2 > P1
HYSTERESIS & REPEATABILITY	.15% SPAN TYP
TEMPERATURE ERROR	
0°C TO 50°C	2.00% SPAN MAX
I85PC15A NULL (0 PSIA)	1.000 VDC TYP
REFERENCE (2 PSIA)	1.667±.050 VDC
FULL SCALE (15 PSIA)	6.000 VDC TYP P1 > P2
SPAN (2 TO 15 PSIA)	4.333±.050 VDC
SENSITIVITY	333.3 mV/PSI TYP
LINEARITY (B.F.S.L.)	1.15% SPAN MAX
HYSTERESIS & REPEATABILITY	.17% SPAN TYP
TEMPERATURE ERROR	
0°C TO 50°C	2.31% SPAN MAX



TYPE "A" & "D" (DIFFERENTIAL)
MOUNTING TYPE = "H"



TYPE "G" (GAGE)
MOUNTING TYPE = "H"



NOTES

- INPUT MEDIA:
P1 - DRY GASES ONLY: CONNECTION SIDE OF SENSOR
P2 - LIMITED ONLY TO THOSE MEDIA THAT WILL NOT ATTACK POLYESTER, SILICON, OR SILICONE BASED ADHESIVE
- TERMINALS ARE PLATED FOR SOLDERING
- LIMIT SOLDERING TO 315°C MAX FOR 10 SECONDS
- UNITS ARE OF PLASTIC CONSTRUCTION
- FOR MOUNTING TYPE "T" DEVICES EXPOSED TO HIGH VIBRATION LEVELS, AS AN ADDED PROTECTION MEASURE, IT IS RECOMMENDED THAT AN ADHESIVE FOAM SECURE THE TRANSDUCER TO THE SUPPORTING STRUCTURE

RELEASE NO: PR-16806

DESIGN UNITS: INCH TOLERANCES UNLESS NOTED:	NO PLACES .x ± 0.76 ONE PLACE .x ± 0.38 TWO PLACE .xx ± 0.15 THREE PLACE .xxx ± ANGLES x ±	THIRD ANGLE PROJECTION	DRAWN GRT 09NOV00 CHECK SAV 09NOV00	<p style="text-align: center;">Honeywell</p> <p style="text-align: center;">PRESSURE TRANSDUCER</p>	
THIS DRAWING COVERS A PROPRIETARY ITEM AND IS THE PROPERTY OF HONEYWELL. THIS DRAWING IS NOT TO BE COPIED OR USED WITHOUT THE PERMISSION OF HONEYWELL.			INTERPRET PER ANSI Y14.5M-1982 OTHER HONEYWELL ENGINEERING STANDARDS MAY APPLY Pro/ENGINEER 2D		
			SIZE C	TYPE I	CAGE CODE -
			DRAWING NAME		REV
			180PC15 SERIES CHT1		10
			SCALE NONE	SHEET 1 OF 1	

Mouser Electronics

Authorized Distributor

Click to View Pricing, Inventory, Delivery & Lifecycle Information:

[Honeywell:](#)

[186PC15DH](#)