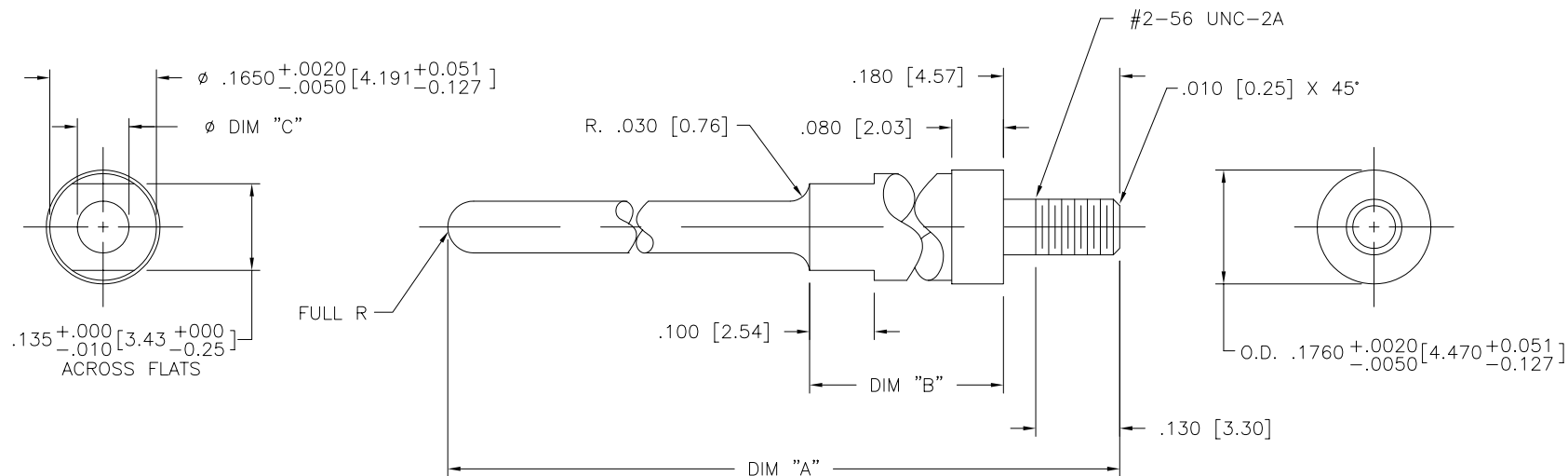


PRODUCT NO.	DIM "A"	DIM "B"	Ø DIM "C"
71225-001	1.040/26.41	.300/7.62	.080/2.03
71225-002	.955/24.25	.300/7.62	.080/2.03
71225-003	.955/24.25	.380/9.65	.090/2.28
71225-001LF	1.040/26.41	.300/7.62	.080/2.03
71225-002LF	.955/24.25	.300/7.62	.080/2.03
71225-003LF	.955/24.25	.380/9.65	.090/2.28

NOTE 3

NOTE 3

NOTE 3



NOTE:

- ①. MATERIAL: 416 STAINLESS STEEL.
- ②. RECOMMENDED INSTALLATION TOOL: P/N 166769-001 (FOR USE IN 1/4" HEX DRIVE).
- ③. THIS PRODUCT MEETS EUROPEAN UNION DIRECTIVES AND OTHER COUNTRY REGULATIONS AS DESCRIBED IN GS-22-008.

mat'l. code				surface	tolerance	projection	product family
NOTE 1				ISO 1302	ISO 406 ISO 1101		HPC
ltr	ecr	no	dr	date	tolerances unless otherwise specified		title
A	V50946	GAH	8/8/95		angles	.XX±.01/.3	RECEPT MOUNTED MALE GUIDE PIN
B	V51393	SAR	8/8/95		linear	.XXX±.005/.13	
C	V60897	GIP	6/10/96	0'±2'		.XXXX±.0020/.051	
D	V60971	GIP	6/25/00	dr	D.HORCHLER	7/8/05	dwg no
E	V00558	LSS	3/3/00	enr	D.HORCHLER	7/8/05	
F	V05-0643	DCH	7/8/05	chr	T.BREWBAKER	7/8/05	
G	M06-0283	MHT	7/27/06	app	D.HORCHLER	7/8/05	sheet 1 of 4 size
sheet	revision	G	G	G	G		
index	sheet	1	2	3	4		



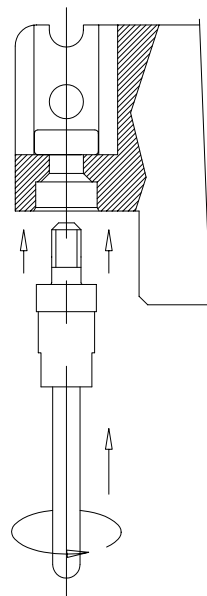
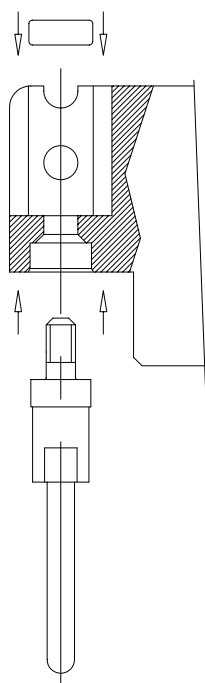


FCIconnect.com

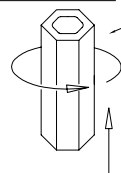
Copyright FCI

PRODUCT NO.

SEE TABLE



UN-ASSEMBLED GUIDE PIN

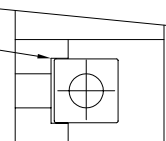


SEE NOTE 2

ASSEMBLY NOTE:

AFTER CONNECTOR IS ON PCB,  
INSERT THE SQUARE NUT, AND  
THEN SCREW IN THE GUIDE PIN

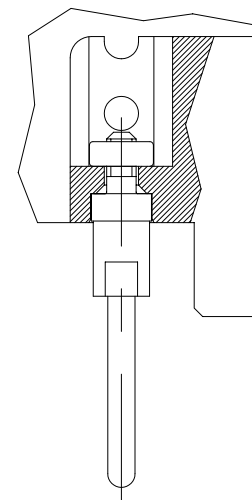
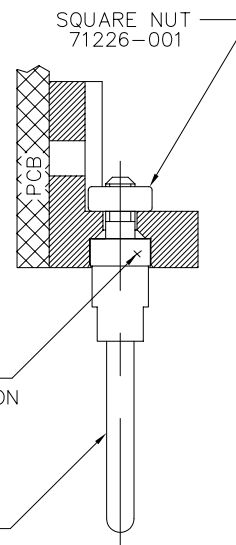
SQUARE  
NUT HELD  
FROM  
ROTATING  
BY SLOT



SQUARE NUT  
71226-001

ROUND  
CONFIGURATION

GUIDE PIN  
71225-001



ASSEMBLED GUIDE PIN

mat'l. code NOTE 1				surface ISO 1302 ✓	tolerance ISO 406 ISO 1101	projection INCH/MM	product family HPC
ltr	ecr	no	dr	date	tolerances unless otherwise specified	scale 1:1 FCI	title RECEPT MOUNTED MALE GUIDE PIN
G					angles linear .XX±.01/.3		dwg no 71225 sheet 2 of 4 size A3
					0°±2' .XXX±.005/.13		
					.XXX±.0020/.051		
			dr	D.HORCHLER	7/8/05	FCI	type Product Customer Drawing
			enr	D.HORCHLER	7/8/05		
			chr	T.BREWBAKER	7/8/05		
			app	D.HORCHLER	7/8/05		
sheet index	revision sheet						

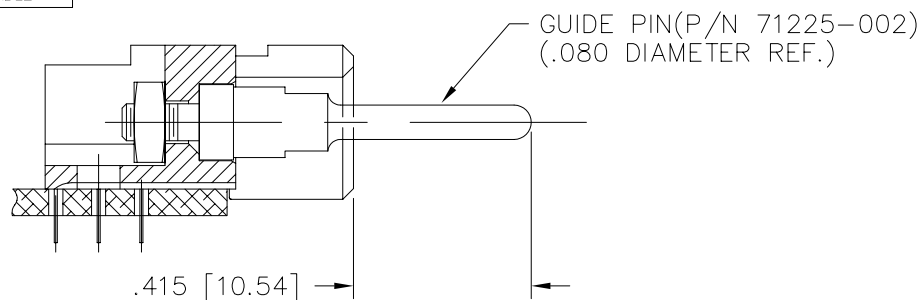
form: A3

PDM: Rev:G

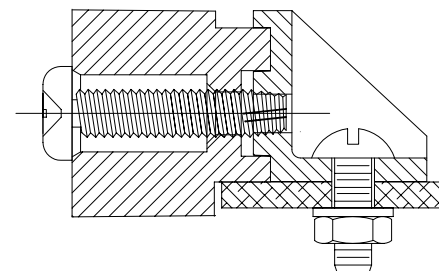
STATUS: Released

Printed: May 14, 2011

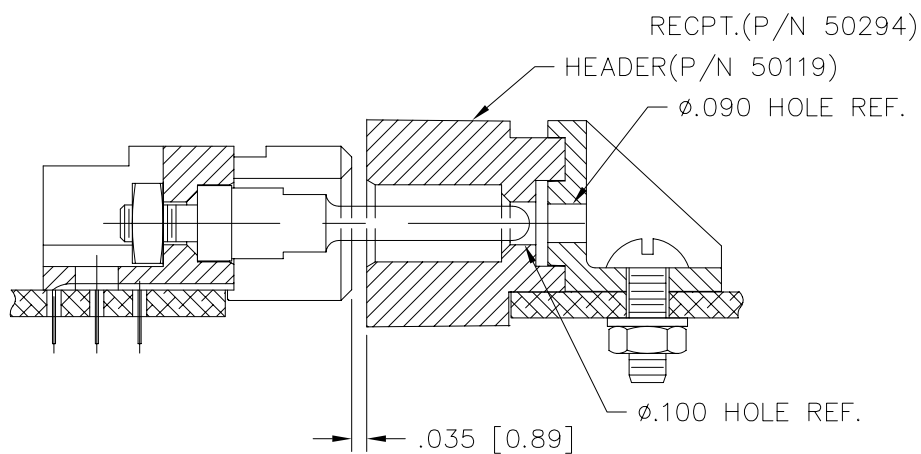
PRODUCT NUMBER  
SEE TABLE



GUIDE PIN, MOUNTED TO RECPT.

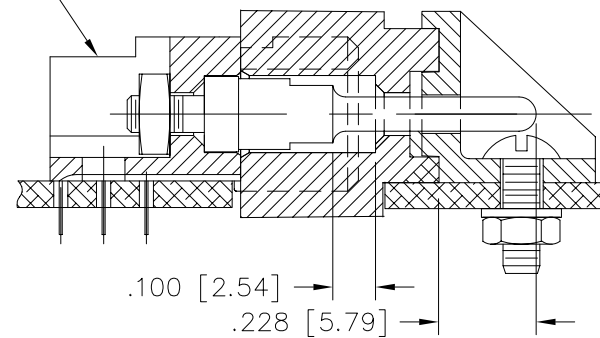


HOUSING w/ BRACKET



GUIDE PIN FIRST CONTACT

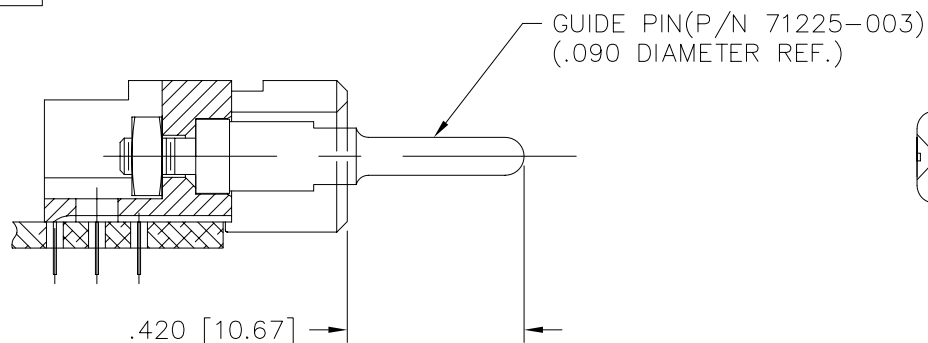
END MOUNTED GUIDE PIN ON RECEPTACLE



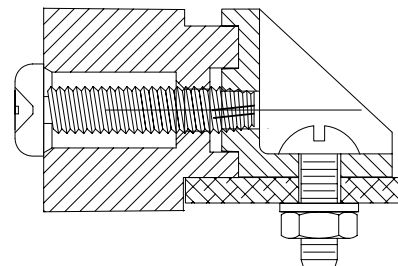
FULLY MATED

mat'l. code NOTE 1				surface ISO 1302 ✓	tolerance ISO 406 ISO 1101	projection INCH/MM	product family HPC
ltr	ec	no	dr	date	tolerances unless otherwise specified	scale 1:1 FCI	title RECEPT MOUNTED MALE GUIDE PIN
G					linear .XX±.01/.3		dwg no 71225
					linear .XXX±.005/.13		sheet 3 of 4 size A3
					linear .XXX±.0020/.051		type Product Customer Drawing
					dr D.HORCHLER 7/8/05		
					enr D.HORCHLER 7/8/05		
					chr T.BREWBAKER 7/8/05		
					app D.HORCHLER 7/8/05		
sheet index	revision sheet						

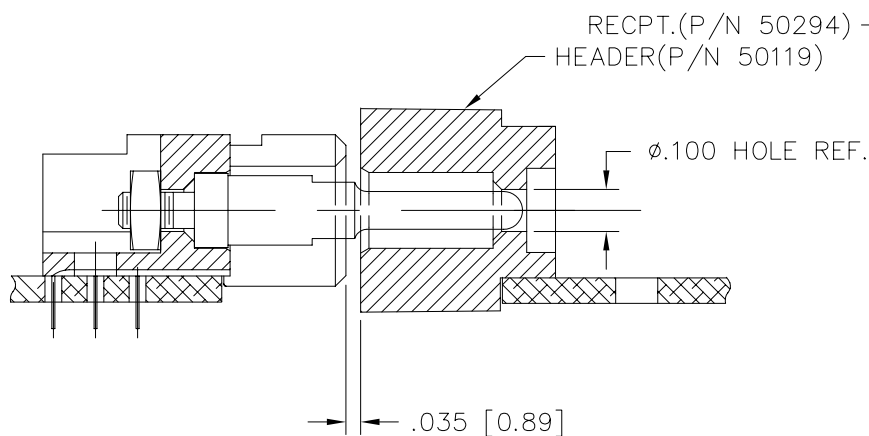
PRODUCT NUMBER  
SEE TABLE



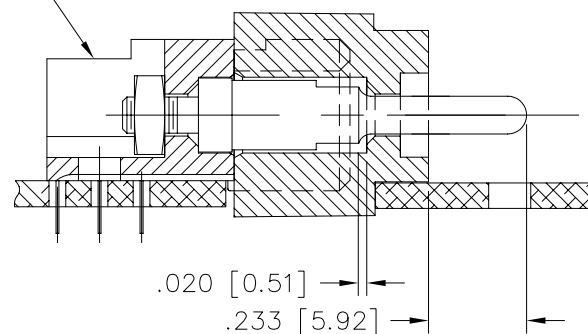
GUIDE PIN, MOUNTED TO RECPT.



HOUSING w/BRACKET



GUIDE PIN FIRST CONTACT



FULLY MATED

END MOUNTED GUIDE PIN ON RECEPTACLE

mat'l. code NOTE 1				surface ISO 1302 ✓	tolerance ISO 406 ISO 1101	projection INCH/MM	product family HPC
ltr	ecm	no	dr	date	tolerances unless otherwise specified		title
G					angles linear .XX±.01/.3	INCH/MM	RECEPT MOUNTED MALE GUIDE PIN
					0'±2' .XXX±.005/.13	scale 1:1	dwg no
					dr D.HORCHLER 7/8/05	FCI	sheet 4 of 4 size
					enr D.HORCHLER 7/8/05		71225 A3
					chr T.BREWBAKER 7/8/05		type Product Customer Drawing
					app D.HORCHLER 7/8/05		
sheet index	revision sheet						

# Mouser Electronics

Authorized Distributor

Click to View Pricing, Inventory, Delivery & Lifecycle Information:

[FCI / Amphenol:](#)

[71225-003LF](#)